

Light efficiency:



Light quality:



Color temperature:

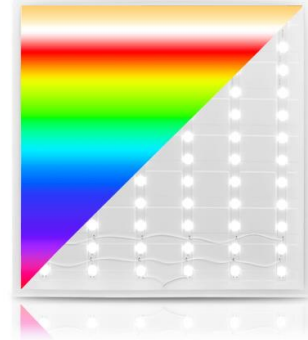


Output: 366 lm

Peak: 125 cd

Power: 8,4 W

PF: 0,81



Tracking number: [VT240923-009502](#)

Product name:

274495-6500K

Item number:

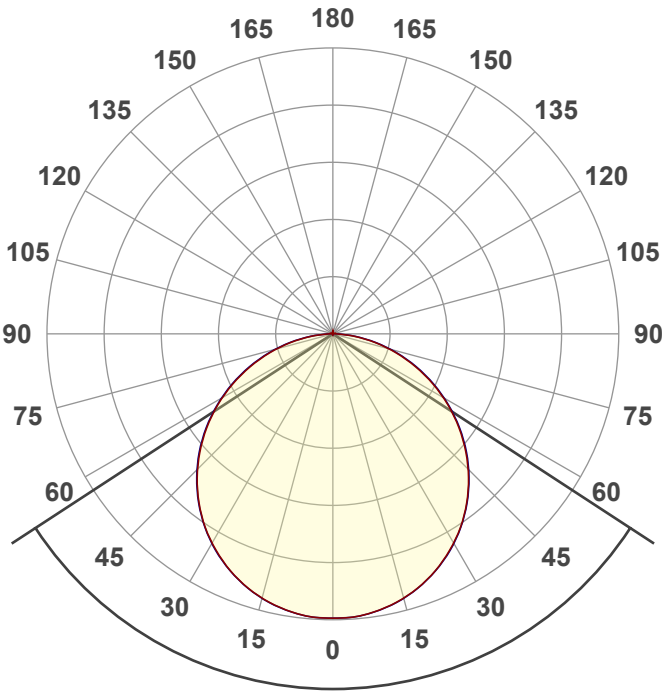
274495-6500K

Date and time:

23-9-2024 10:10:06

Description:

**BACK-LIT LED PANEEL | DOVER |
RGB+CCT | 30X30CM | 12W**



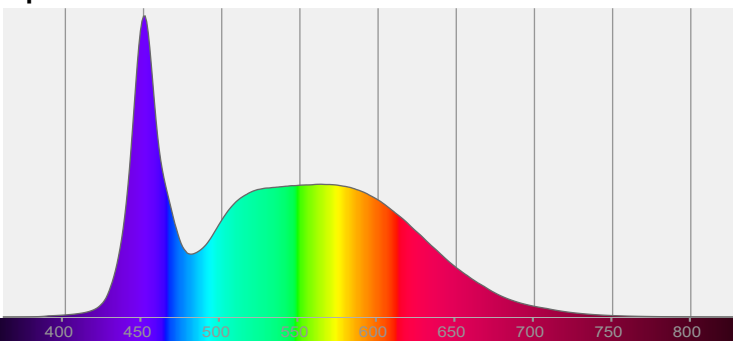
Beam angle

113,7°

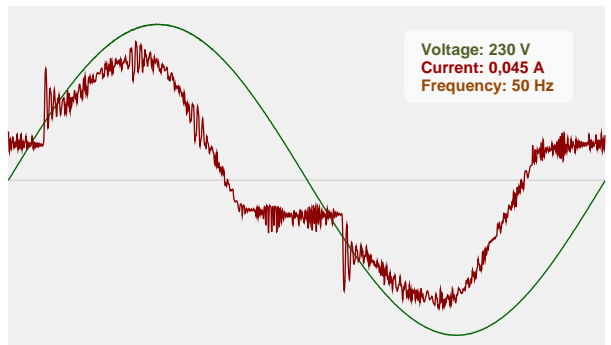


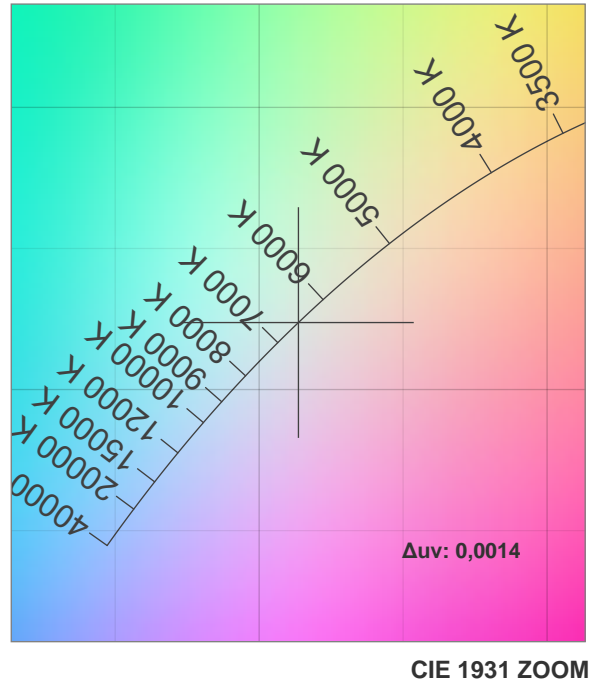
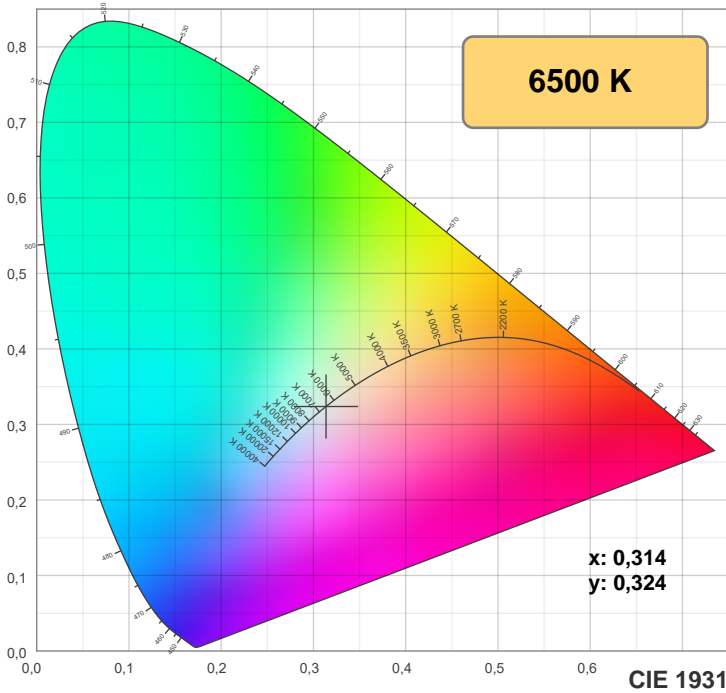
CIE 1931
x: 0,314
y: 0,324

Spectra



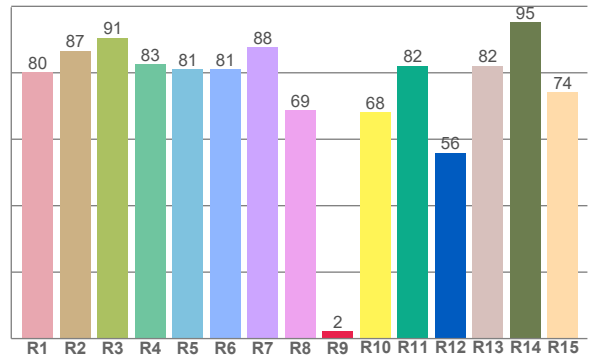
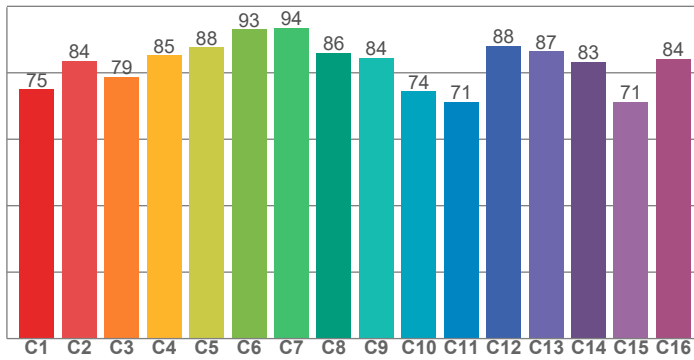
Power





TM-30: 82,7

CRI: 82,4 (R1-R8)



CRI R values, only R1-R8 are used to calculate final CRI value

R1	R2	R3	R4	R5	R6	R7	R8	R9	R10	R11	R12	R13	R14	R15
80,2	86,6	90,5	82,6	81,0	81,1	87,8	68,9	2,2	68,1	82,1	55,9	82,1	95,2	74,2

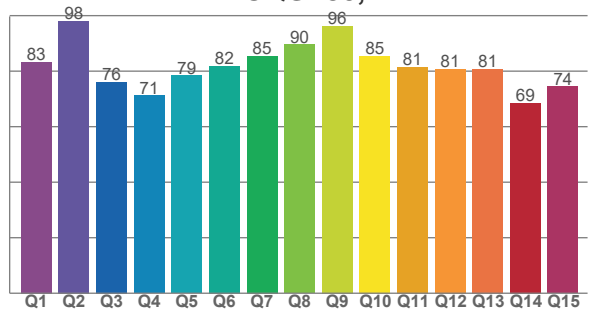
TM30 C values, 16 binned values out of total of 99 C values

C1	C2	C3	C4	C5	C6	C7	C8	C9	C10	C11	C12	C13	C14	C15	C16
75,0	83,6	78,8	85,2	87,7	93,2	93,6	86,0	84,5	74,5	71,3	88,2	86,5	83,3	71,2	84,3

CQS Q values

Q1	Q2	Q3	Q4	Q5	Q6	Q7	Q8	Q9	Q10	Q11	Q12	Q13	Q14	Q15
83,3	98,0	76,0	71,2	78,5	81,8	85,5	89,6	96,3	85,4	81,5	80,7	80,8	68,5	74,4

CQS: 80,4



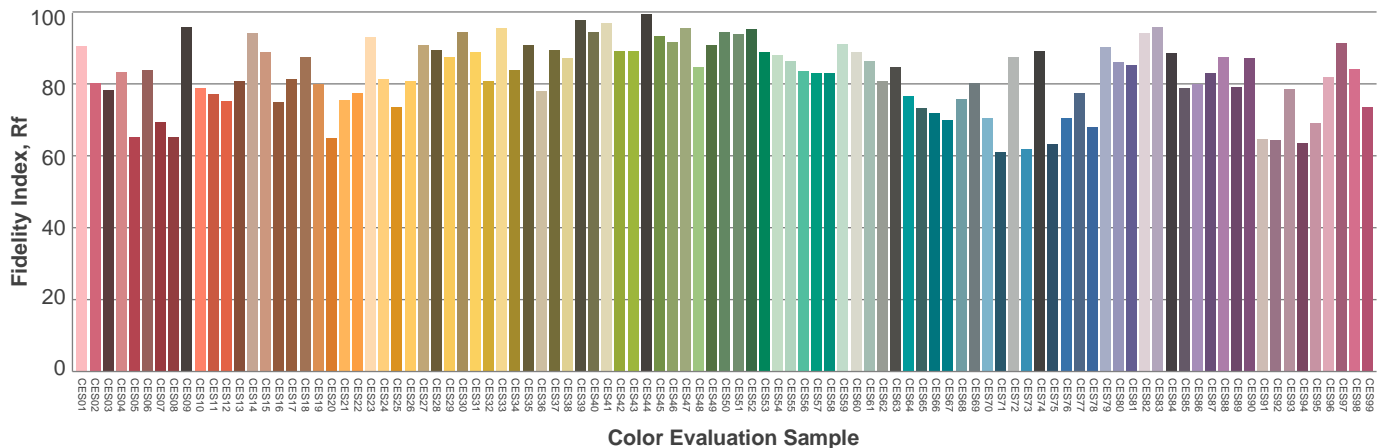
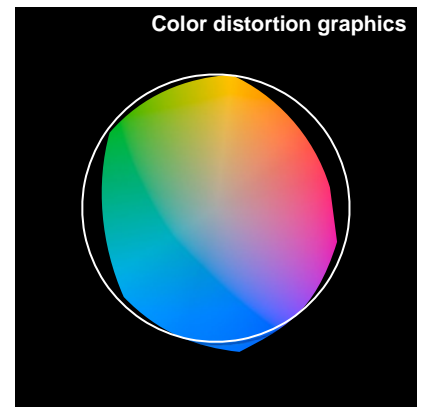
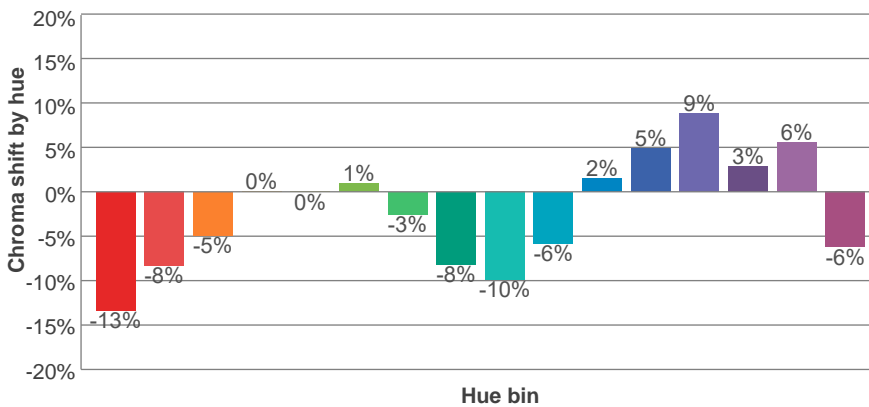
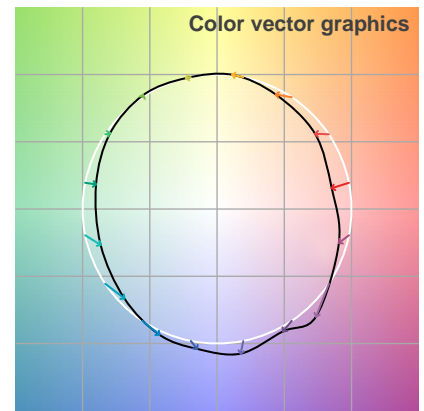
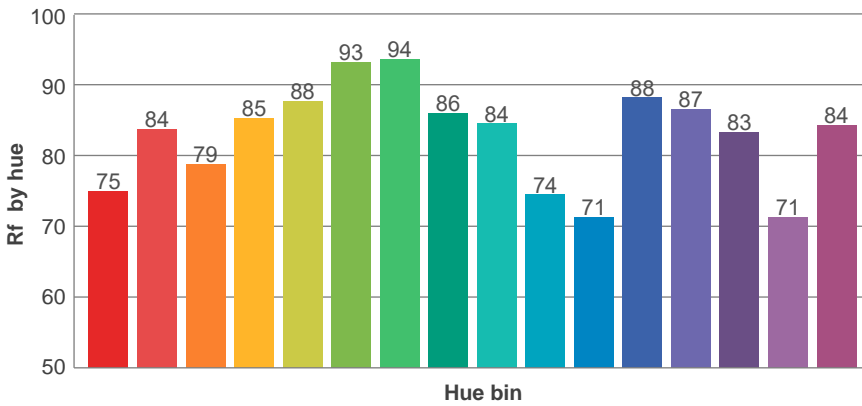
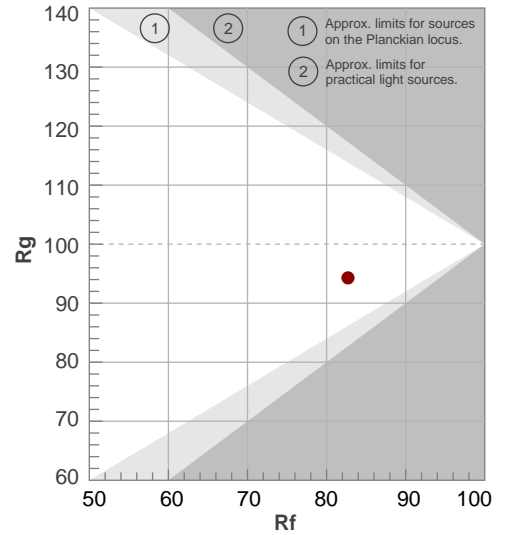
Color parameters

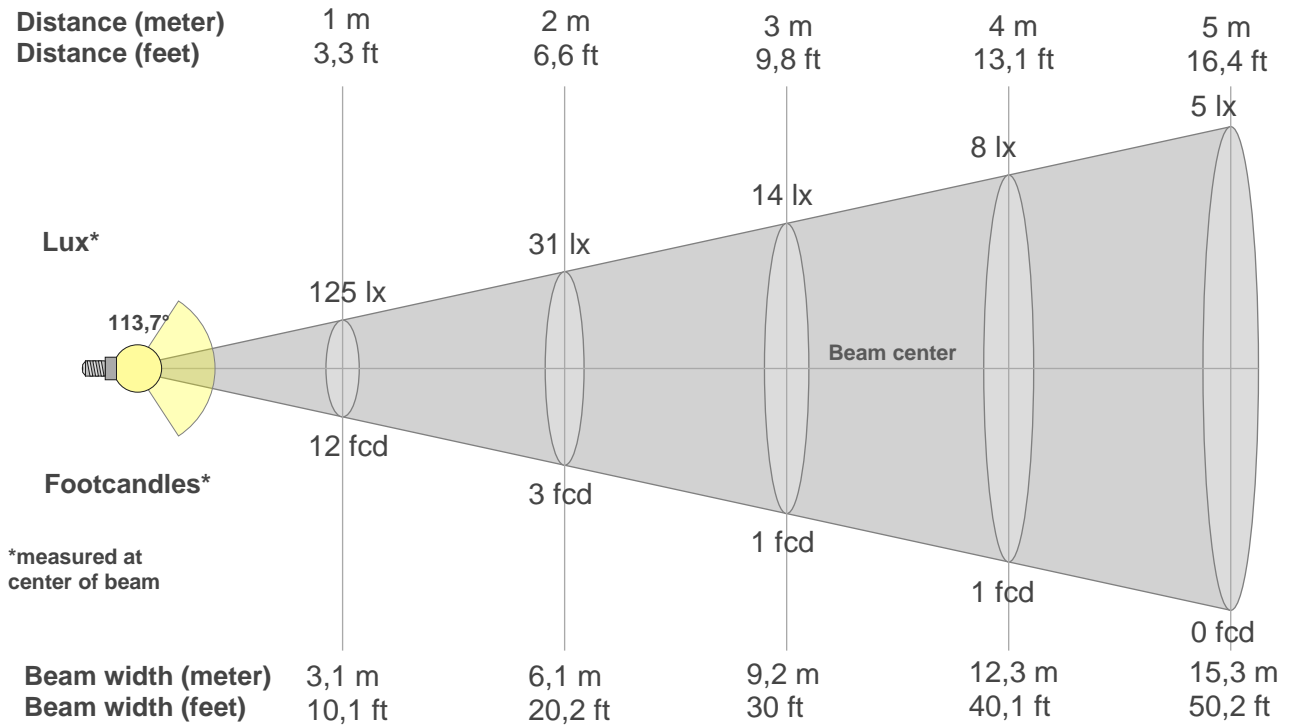
Color temperature	Color rendering index	Red component	Color fidelity	Color gamut	Color quality scale	Color coordinate cie 1931	Color coordinate cie 1931	Color coordinate	Color coordinate	Color deviation from black body
CCT	CRI	CRI R9	TM30 Rf	TM30 Rg	CQS	x	y	u	v	Δuv
6500 K	82,4	2,2	82,7	94,3	80,4	0,314	0,324	0,200	0,310	0,0014

Rf 82,7
Fidelity index Rf

Rg 94,3
Gamut index Rg

Hue Bin	R _f	Shifts (%)	
		Chroma	Hue
1	75	-13%	-1%
2	84	-8%	6%
3	79	-5%	11%
4	85	0%	8%
5	88	0%	4%
6	93	1%	-1%
7	94	-3%	-3%
8	86	-8%	0%
9	84	-10%	9%
10	74	-6%	17%
11	71	2%	16%
12	88	5%	6%
13	87	9%	-4%
14	83	3%	-10%
15	71	6%	-26%
16	84	-6%	-7%





Beam intensities from 1-20m

1m	2m	3m	4m	5m	6m	7m	8m	9m	10m	11m	12m	13m	14m	15m	16m	17m	18m	19m	20m
3,3ft	6,6ft	9,8ft	13,1ft	16,4ft	19,7ft	23ft	26,2ft	29,5ft	32,8ft	36,1ft	39,4ft	42,7ft	45,9ft	49,2ft	52,5ft	55,8ft	59,1ft	62,3ft	65,6ft
125lx	31lx	14lx	8lx	5lx	3lx	3lx	2lx	2lx	1lx	1lx	1lx	1lx	1lx	1lx	0lx	0lx	0lx	0lx	0lx
11,6fcd	2,9fcd	1,3fcd	0,7fcd	0,5fcd	0,3fcd	0,2fcd	0,2fcd	0,1fcd	0,1fcd	0,1fcd	0,1fcd	0,1fcd	0,1fcd	0,1fcd	0fcd	0fcd	0fcd	0fcd	0fcd

Intensities in 0° c-plane

0°	5°	10°	15°	20°	25°	30°	35°	40°	45°	50°	55°	60°	65°	70°	75°	80°	85°	90°	95°
125	125	123	120	116	112	106	100	92	84	75	66	56	46	36	26	16	7	2	0
100%	100%	98%	96%	93%	89%	85%	80%	74%	67%	60%	53%	45%	37%	29%	21%	13%	6%	1%	0%

Intensities in 90° c-plane

0°	5°	10°	15°	20°	25°	30°	35°	40°	45°	50°	55°	60°	65°	70°	75°	80°	85°	90°	95°
125	125	123	120	117	112	106	100	92	84	76	66	57	47	36	26	17	8	2	0
100%	100%	98%	96%	93%	89%	85%	80%	74%	67%	61%	53%	45%	37%	29%	21%	13%	6%	1%	0%

Intensities in 180° c-plane

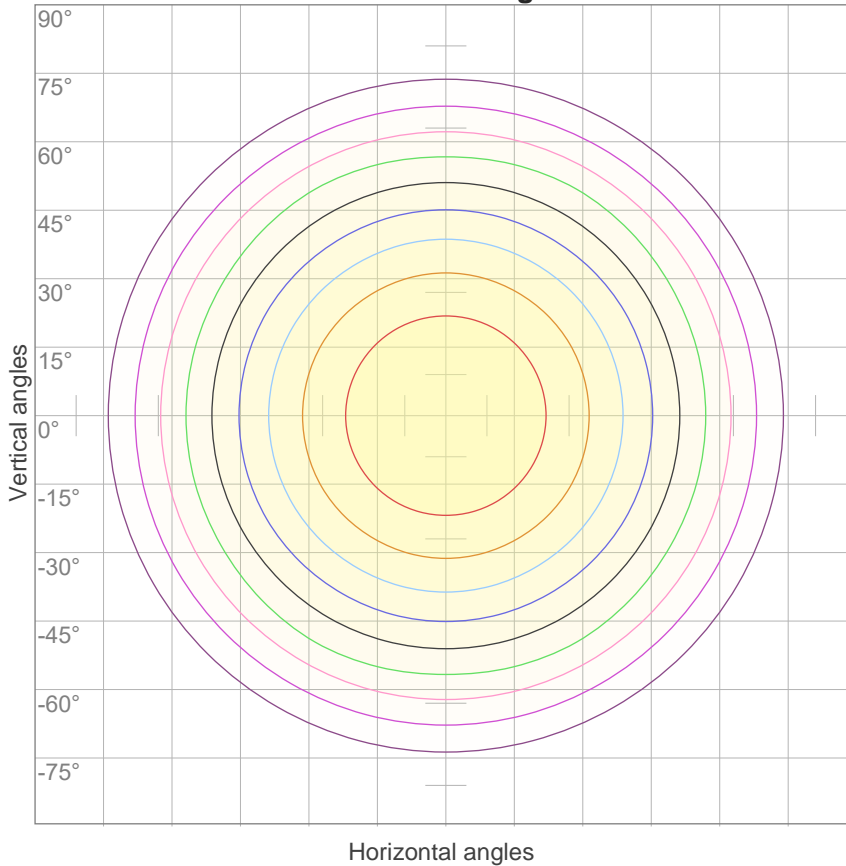
0°	5°	10°	15°	20°	25°	30°	35°	40°	45°	50°	55°	60°	65°	70°	75°	80°	85°	90°	95°
125	125	123	120	116	112	106	100	92	84	75	66	56	46	36	26	16	7	2	0
100%	100%	98%	96%	93%	89%	85%	80%	74%	67%	60%	53%	45%	37%	29%	21%	13%	6%	1%	0%

Intensities in 270° c-plane

0°	5°	10°	15°	20°	25°	30°	35°	40°	45°	50°	55°	60°	65°	70°	75°	80°	85°	90°	95°
125	125	123	120	117	112	106	100	92	84	76	66	57	47	36	26	17	8	2	0
100%	100%	98%	96%	93%	89%	85%	80%	74%	67%	61%	53%	45%	37%	29%	21%	13%	6%	1%	0%

Beam angle 50%	Field angle 10%	Cutoff angle 2,5%	Intensity ratio in 120° cone	Intensity ratio in 90° cone
113,7°	164°	176°	77,4%	52,5%

iso-candela diagram



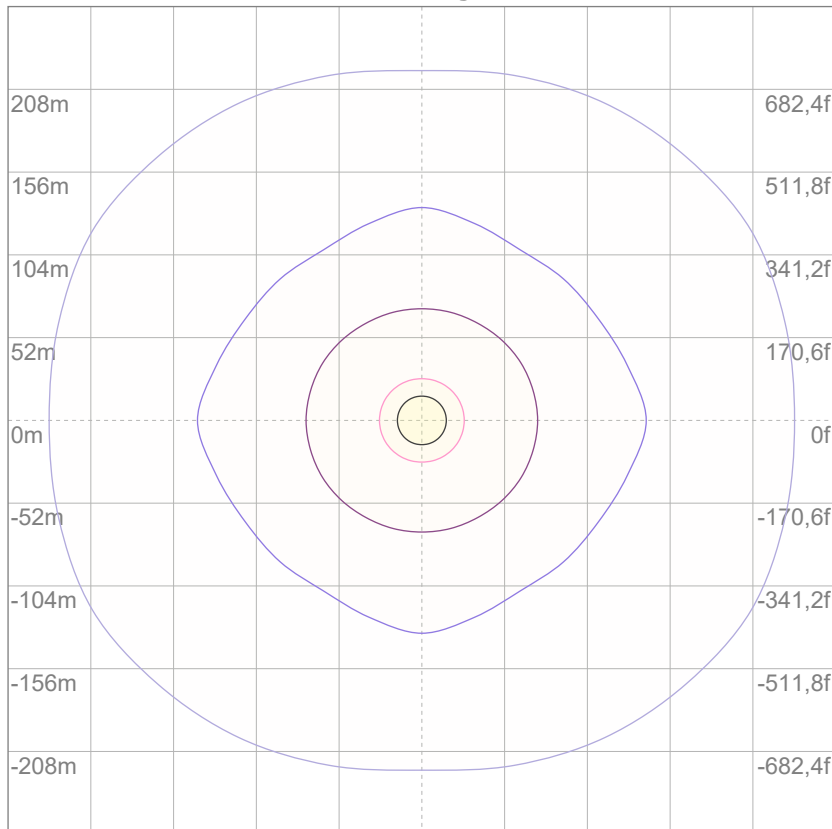
10%	13 cd
20%	25 cd
30%	38 cd
40%	50 cd
50%	63 cd
60%	75 cd
70%	88 cd
80%	100 cd
90%	113 cd

Conditions:

Number of c-planes: 12

Candela at center: 125 cd

iso-lux diagram



3%	37,5m lx
5%	62,5m lx
10%	0,125 lx
30%	0,375 lx
50%	0,625 lx

Conditions:

Number of c-planes: 12

Lux at center: 1,25 lx

Lux distribution on a surface when lamp is mounted at 10 meters from the surface.

Glare evaluation according to UGR

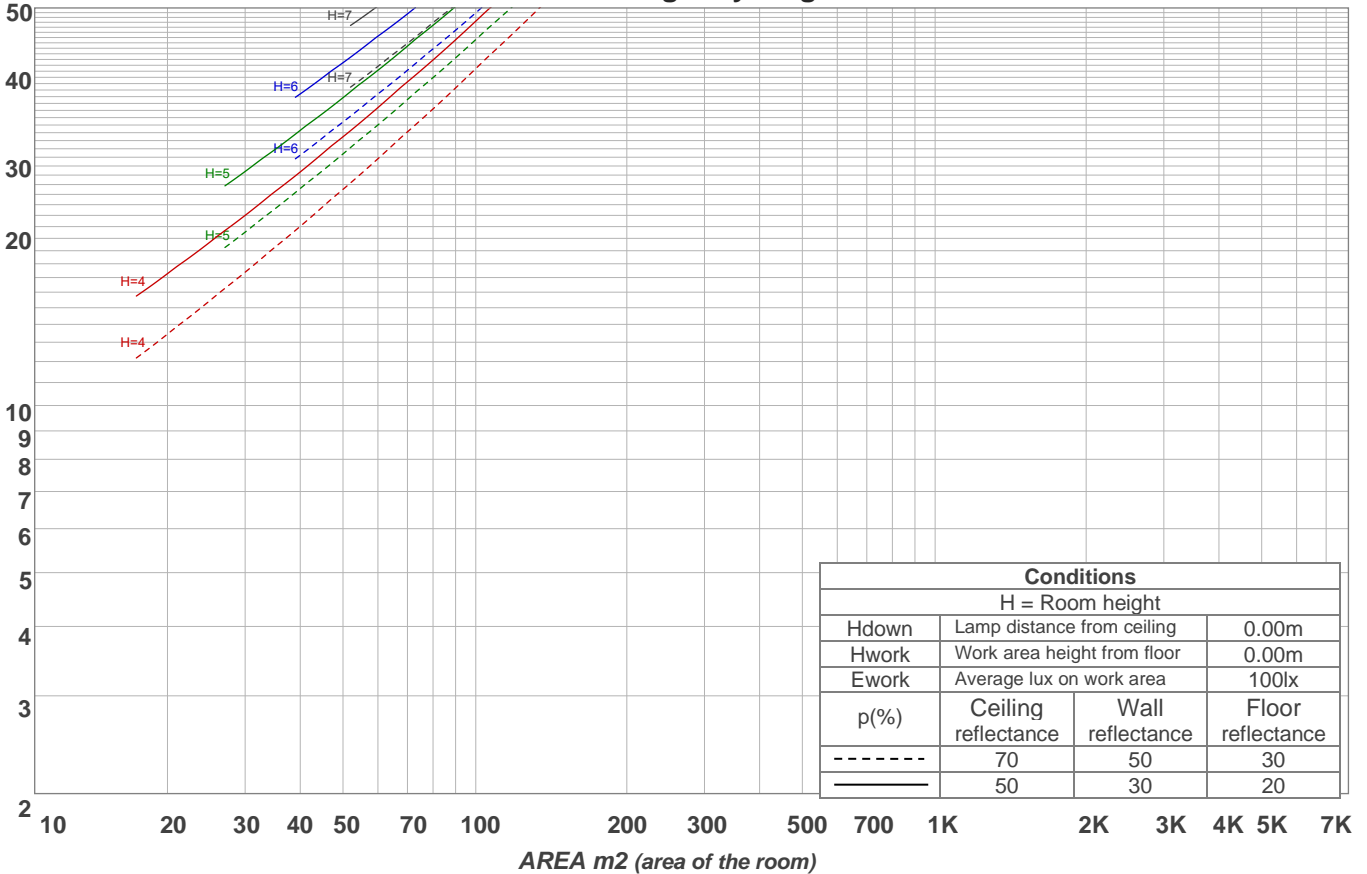
p Ceiling	70	70	50	50	30	70	70	50	50	30	
p Walls	50	30	50	30	30	50	30	50	30	30	
p Floor	20	20	20	20	20	20	20	20	20	20	
Room size X Y	Viewing direction at right angles to lamp axis					Viewing direction parallel to lamp axis					
2H	2H	14,4	15,6	14,6	15,9	16,2	14,4	15,6	14,6	15,9	16,2
	3H	15,8	17,1	16,3	17,4	17,6	15,9	17,2	16,3	17,5	17,7
	4H	16,5	17,7	16,9	18,0	18,3	16,5	17,8	17,0	18,0	18,3
	6H	17,0	18,1	17,3	18,4	18,8	17,1	18,2	17,4	18,5	18,8
	8H	17,2	18,2	17,5	18,5	18,9	17,3	18,3	17,6	18,6	19,0
12H	17,2	18,3	17,6	18,6	19,1	17,3	18,4	17,7	18,7	19,2	
4H	2H	15,0	16,2	15,4	16,5	16,8	15,0	16,2	15,4	16,5	16,8
	3H	16,8	17,8	17,1	18,1	18,6	16,8	17,8	17,2	18,2	18,6
	4H	17,4	18,4	17,9	18,8	19,4	17,5	18,4	18,0	18,9	19,4
	6H	18,0	18,9	18,5	19,3	19,7	18,1	19,0	18,6	19,4	19,7
	8H	18,2	19,0	18,7	19,4	19,8	18,3	19,1	18,8	19,5	19,9
12H	18,4	19,0	18,9	19,5	20,0	18,5	19,1	19,0	19,6	20,1	
8H	4H	17,7	18,6	18,3	18,9	19,3	17,8	18,6	18,3	19,0	19,4
	6H	18,5	19,1	19,0	19,6	20,1	18,6	19,2	19,1	19,6	20,2
	8H	18,8	19,3	19,3	19,9	20,5	18,9	19,4	19,4	19,9	20,6
	12H	19,0	19,4	19,6	19,9	20,6	19,1	19,5	19,7	20,0	20,7
12H	4H	17,8	18,4	18,3	18,9	19,4	17,8	18,5	18,3	18,9	19,4
	6H	18,6	19,1	19,1	19,6	20,3	18,6	19,2	19,2	19,7	20,3
	8H	18,9	19,3	19,5	19,8	20,5	19,0	19,4	19,5	19,9	20,5
Variation of the observer position for the luminaire distance S											
S = 1.0H	0,1 / -0,1					0,1 / -0,1					
S = 1.5H	0,1 / -0,2					0,1 / -0,2					
S = 2.0H	0,4 / -0,5					0,4 / -0,4					
CIE 117-1995. Corrected glare indices referring to 366 lm total luminous flux											

Coefficients of Utilization

Ceiling reflectance	80				70				50			30			10			0			
Wall reflectance	70	50	30	10	70	50	30	10	50	30	10	50	30	10	50	30	10	0			
Floor reflectance	20	20	20	20	20	20	20	20	20	20	20	20	20	20	20	20	20	20	20	20	0
RCR	(RCR: Room Cavity Ratio)																				
	Room Values are expressed as percentage of Lumens delivered to the task surface																				
0	119	119	119	119	116	116	116	116	111	111	111	106	106	106	102	102	102	100			
1	108	103	99	95	106	101	97	93	97	93	90	93	90	88	89	87	85	83			
2	98	90	83	77	96	88	82	76	84	79	74	81	76	72	78	74	71	69			
3	90	79	70	64	87	77	69	63	74	67	62	71	66	61	69	64	60	58			
4	82	70	61	54	80	68	60	53	66	58	53	63	57	52	61	56	51	49			
5	75	62	53	46	73	61	52	46	59	51	45	57	50	45	55	49	44	42			
6	69	56	47	40	67	55	46	40	53	45	40	51	45	39	50	44	39	37			
7	64	51	42	36	63	50	41	35	48	41	35	47	40	35	45	39	35	33			
8	60	46	38	32	58	45	37	32	44	37	31	43	36	31	42	35	31	29			
9	56	42	34	28	54	42	34	28	41	33	28	39	33	28	38	32	28	26			
10	52	39	31	26	51	39	31	26	38	30	26	37	30	25	36	30	25	24			

LAMPS (number of lamps)

Luminaire budgetary diagram



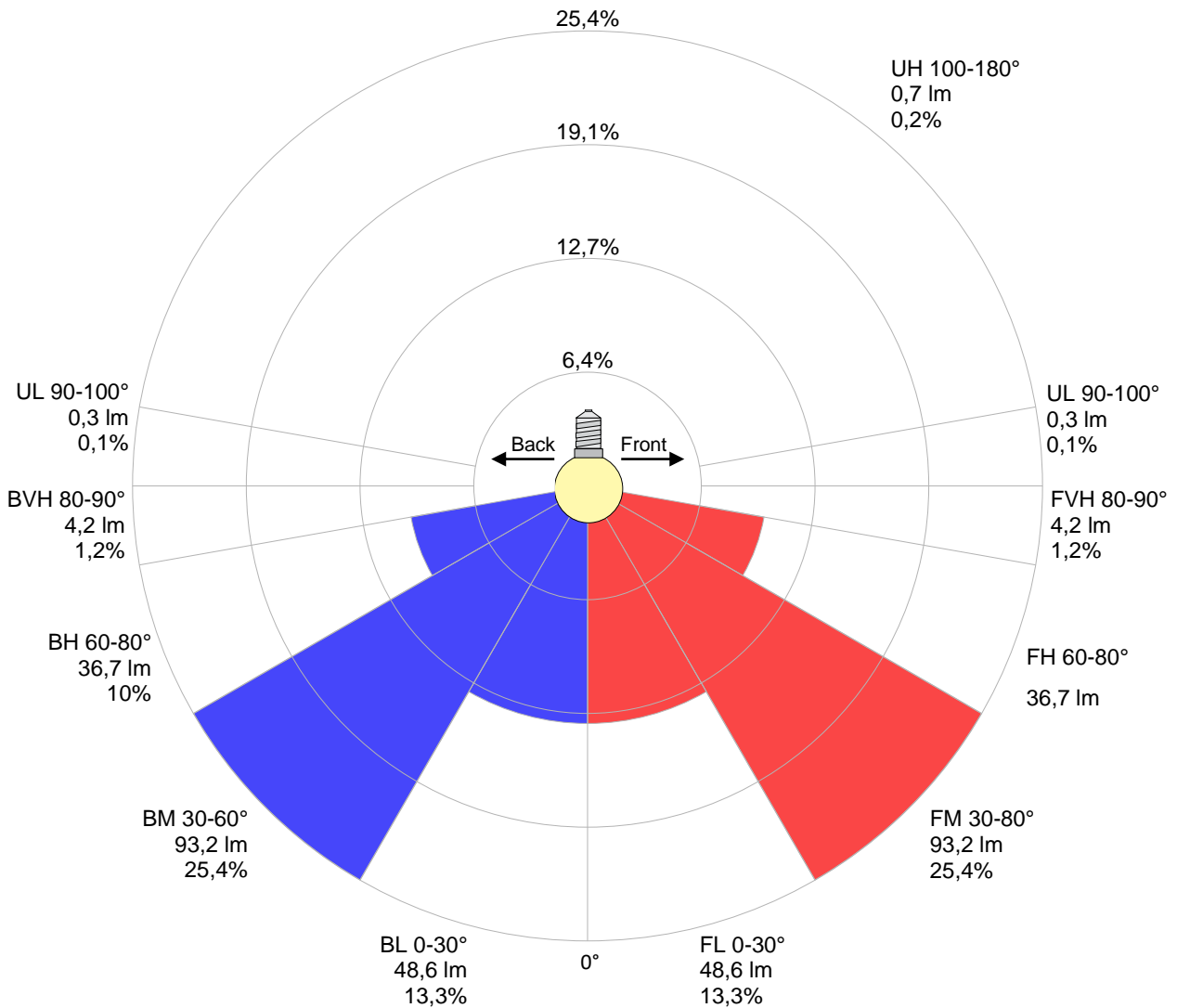
Zonal Lumen Summary

0°-10°	10°-20°	20°-30°	30°-40°	40°-50°	50°-60°	60°-70°	70°-80°	80°-90°
{LUM0-10}	33,9 lm	51,5 lm	62,4 lm	64,9 lm	59,1 lm	46,0 lm	27,4 lm	8,38 lm
90°-100°	100°-110°	110°-120°	120°-130°	130°-140°	140°-150°	150°-160°	160°-170°	170°-180°
0,266 lm	0,108 lm	0,117 lm	0,121 lm	0,110 lm	0,103 lm	0,077 lm	0,050 lm	0,018 lm

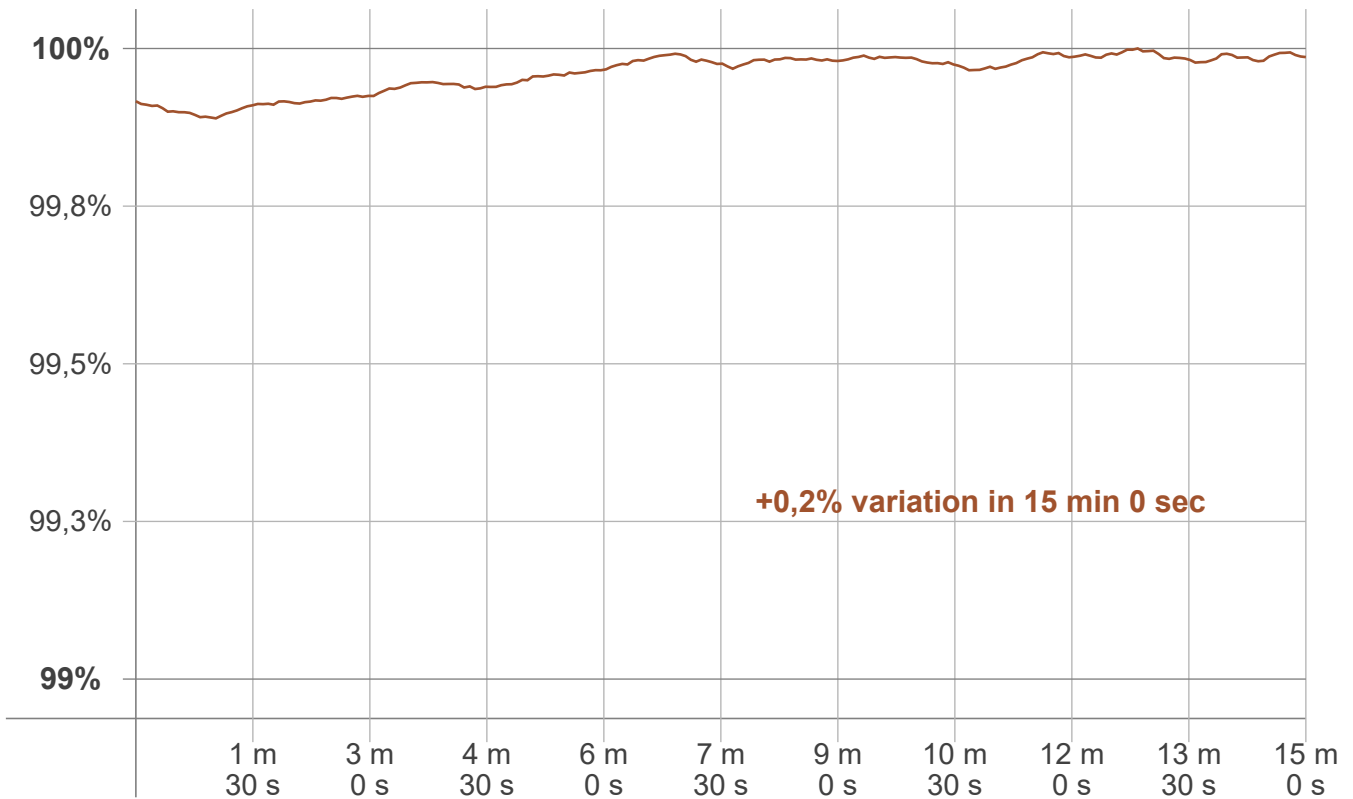
LCS table

BUG rating:	B0 U1 G0	
Forward light	Lumens	Lumens %
Low(0-30):	48,6	13,3%
Medium(30-60):	93,2	25,4%
High(60-80):	36,7	10%
Very high(80-90):	4,2	1,2%
Back light		
Low(0-30):	48,6	13,3%
Medium(30-60):	93,2	25,4%
High(60-80):	36,7	10%
Very high(80-90):	4,2	1,2%
Uplight		
Low(90-100):	0,3	0,1%
High(100-180):	0,7	0,2%

LCS graph



Warmup curve



Warmup result

Warmup time:	Lamp stabilized in 15 min 0 sec
Warmup variation	+0,2%

Warmup conditions

Stable period:	15 min
Stable change max:	2,0%
Minimum time:	15 min

Color temperature change

CCT start	CCT change	CCT end
6496 K	+4 K	6500 K

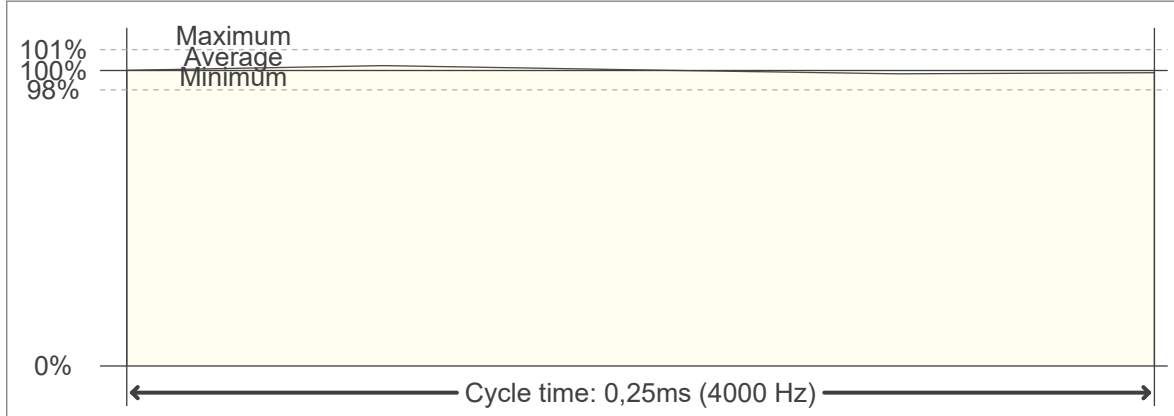
Output change

Output start	Output change	Output end
366 lm	+ 1m	366 lm

Flicker curve (complete sampled flicker signal)



Flicker frame (frame of one flicker period)



Flicker FFT (frequency scope of flicker curve)



Flicker results:

Flicker frequency:		4000 Hz	
Flicker index:	0	JA8/10 40Hz	0,12 %
Flicker percentage:	3,42 %	JA8/10 90Hz	0,15 %
SVM: (Visual flicker)	0	JA8/10 200Hz	0,27 %
PstLM	0,13	JA8/10 400Hz	0,45 %
Mp	0,08	JA8/10 1000Hz	0,92 %

Flicker conditions:

Sample rate:	20000 samples/second
--------------	----------------------