

Light efficiency:



Light quality:



Color temperature:

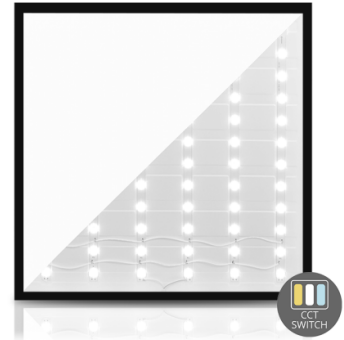


Output: 3763 lm

Peak: 1754 cd

Power: 29,5 W

PF: 0,95



Tracking number: [n/a](#)

Product name:

277717-6000K

Item number:

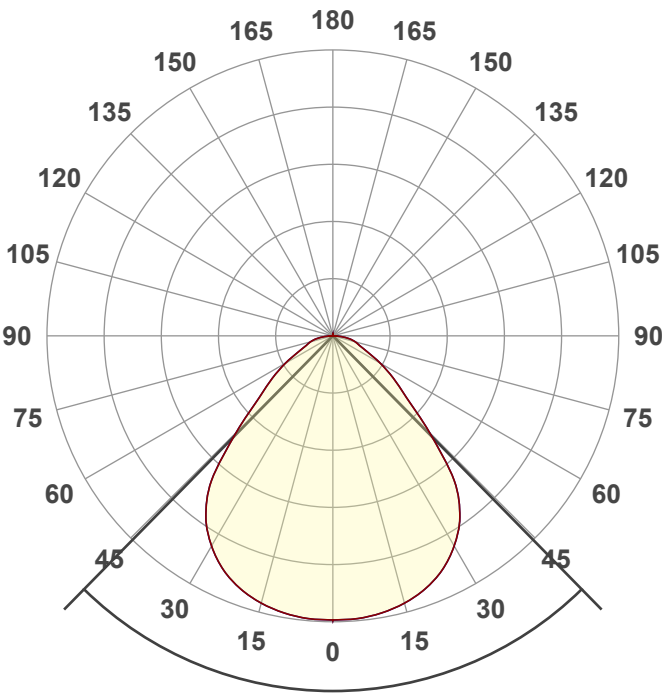
277717-6000K

Date and time:

18-6-2024 18:37:28

Description:

BACK-LIT LED PANEEL | EUROPA | 60X60CM | 30W | ZWART | CCT-SWITCH

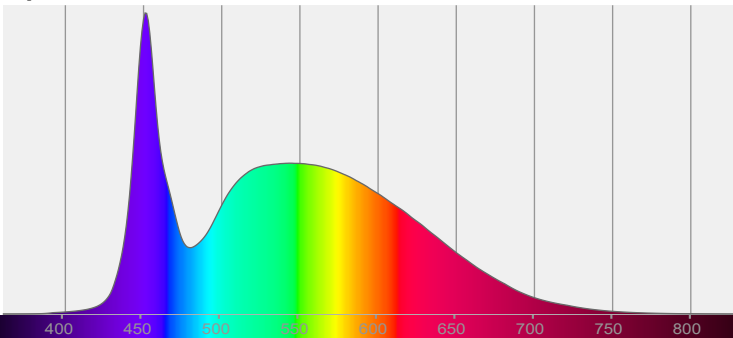


Beam angle **89°**

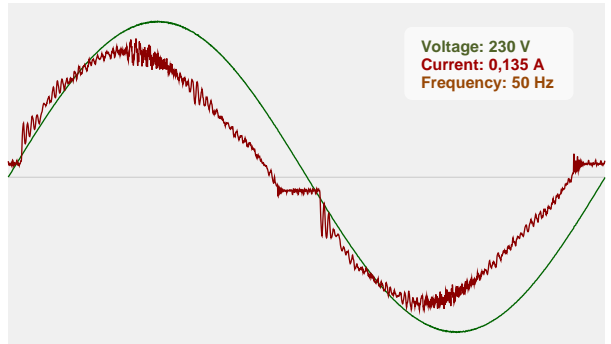


CIE 1931
x: 0,322
y: 0,332

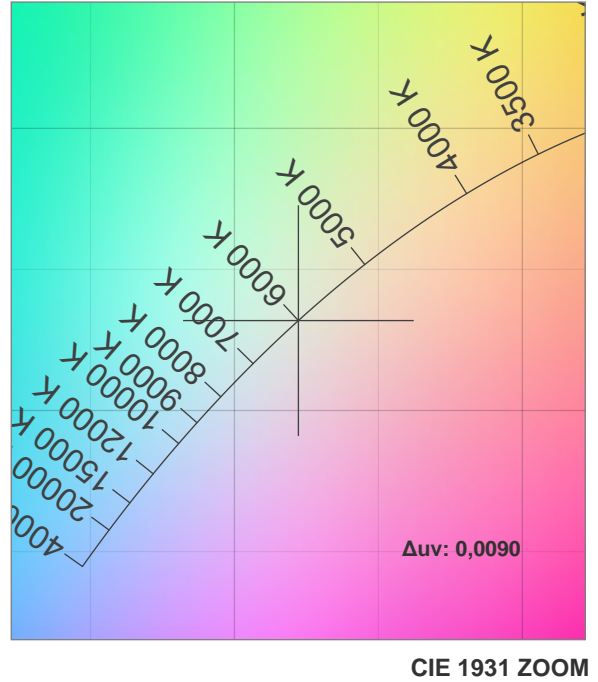
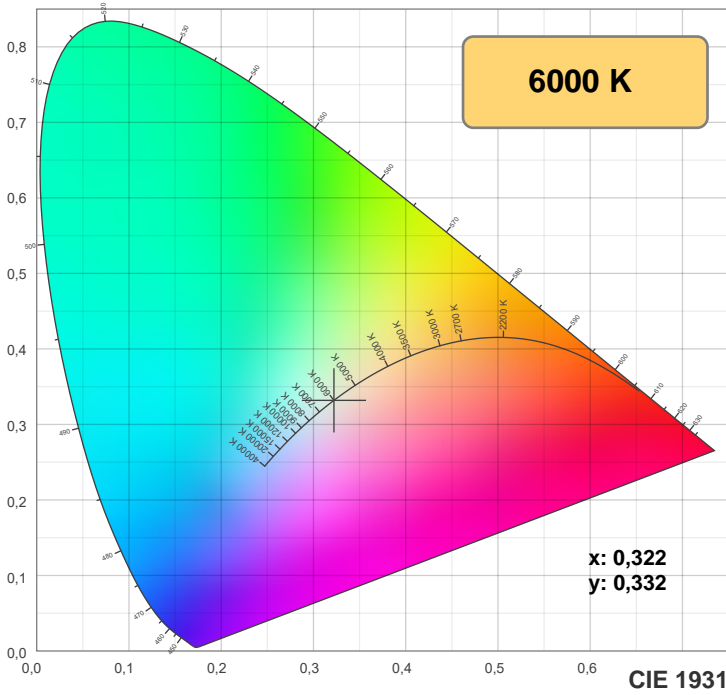
Spectra



Power

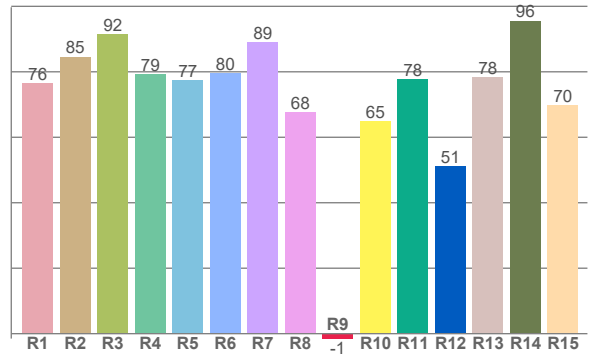
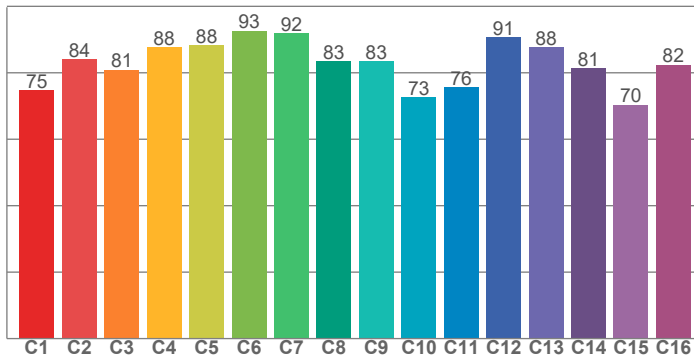


Voltage: 230 V
Current: 0,135 A
Frequency: 50 Hz

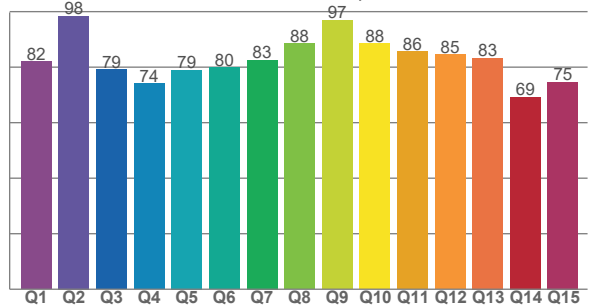


TM-30: 82,9

CRI: 80,7 (R1-R8)



CQS: 81,4



CRI R values, only R1-R8 are used to calculate final CRI value

R1	R2	R3	R4	R5	R6	R7	R8	R9	R10	R11	R12	R13	R14	R15
76,4	84,6	91,5	79,3	77,4	79,6	89,1	67,7	-1,5	65,0	77,7	51,2	78,4	95,6	69,8

TM30 C values, 16 binned values out of total of 99 C values

C1	C2	C3	C4	C5	C6	C7	C8	C9	C10	C11	C12	C13	C14	C15	C16
74,7	84,1	80,8	87,7	88,3	92,6	91,9	83,4	83,5	72,6	75,7	90,7	87,7	81,3	70,4	82,5

CQS Q values

Q1	Q2	Q3	Q4	Q5	Q6	Q7	Q8	Q9	Q10	Q11	Q12	Q13	Q14	Q15
82,1	98,4	79,1	74,2	78,9	79,9	82,6	88,5	96,9	88,4	85,6	84,6	83,4	69,3	74,6

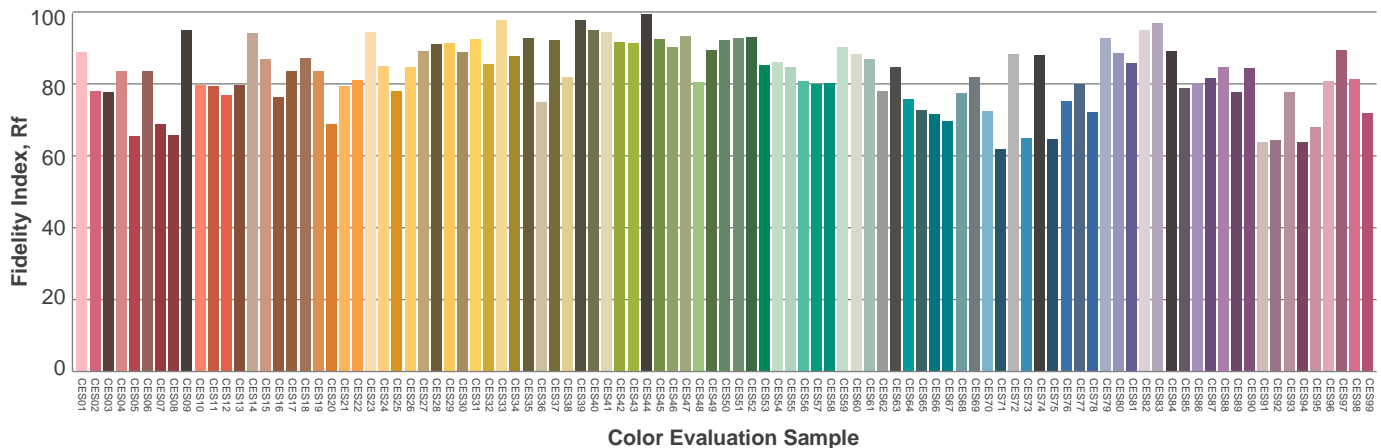
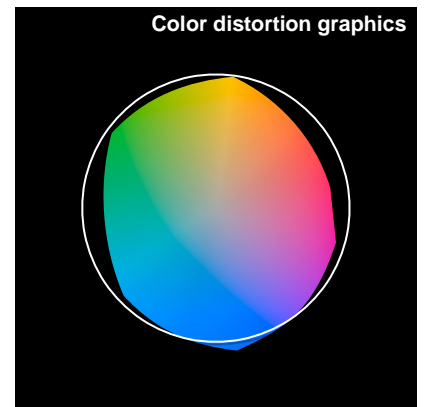
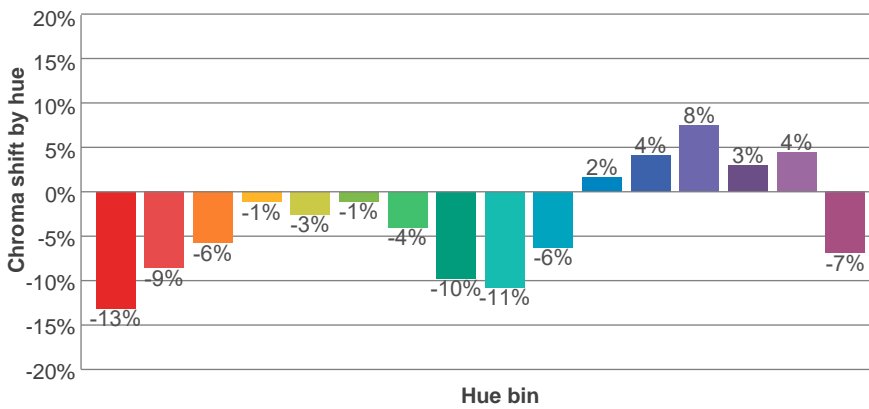
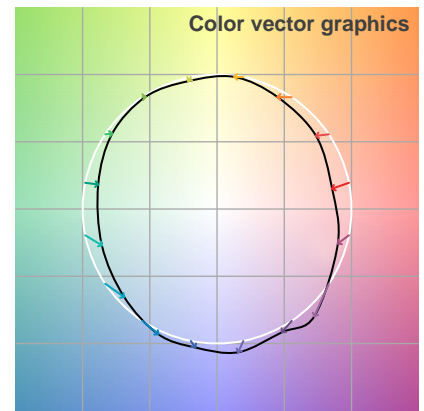
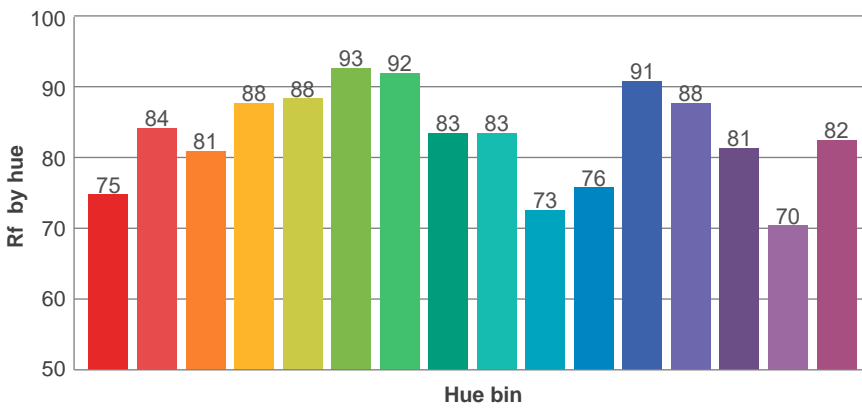
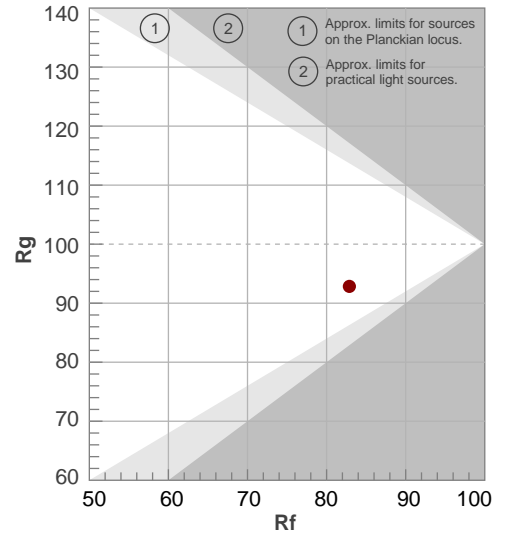
Color parameters

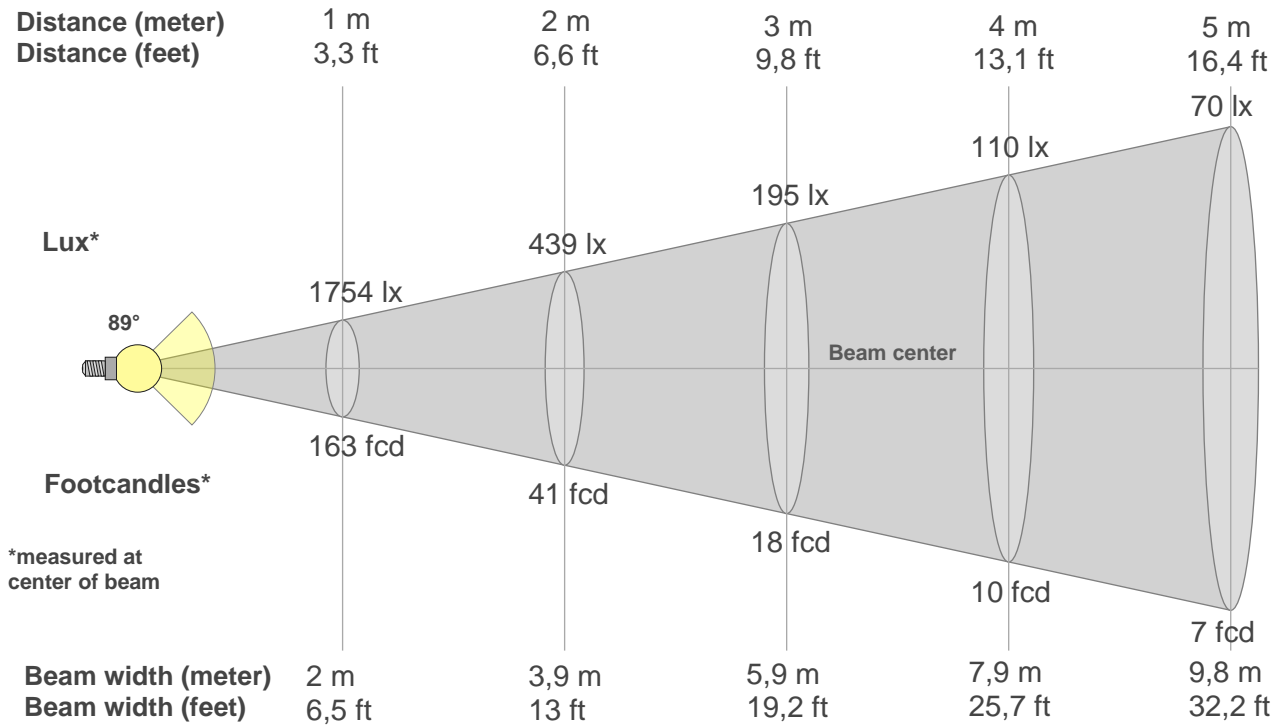
Color temperature	Color rendering index	Red component	Color fidelity	Color gamut	Color quality scale	Color coordinate cie 1931	Color coordinate cie 1931	Color coordinate	Color coordinate	Color deviation from black body
CCT	CRI	CRI R9	TM30 Rf	TM30 Rg	CQS	x	y	u	v	Δuv
6000 K	80,7	-1,5	82,9	92,8	81,4	0,322	0,332	0,203	0,314	0,0090

Rf 82,9
Fidelity index Rf

Rg 92,8
Gamut index Rg

Hue Bin	R _f	Shifts (%)	
		Chroma	Hue
1	75	-13%	-2%
2	84	-9%	4%
3	81	-6%	9%
4	88	-1%	7%
5	88	-3%	2%
6	93	-1%	-2%
7	92	-4%	-3%
8	83	-10%	-1%
9	83	-11%	10%
10	73	-6%	16%
11	76	2%	15%
12	91	4%	4%
13	88	8%	-5%
14	81	3%	-11%
15	70	4%	-26%
16	82	-7%	-8%





Beam intensities from 1-20m

1m	2m	3m	4m	5m	6m	7m	8m	9m	10m	11m	12m	13m	14m	15m	16m	17m	18m	19m	20m
3,3ft	6,6ft	9,8ft	13,1ft	16,4ft	19,7ft	23ft	26,2ft	29,5ft	32,8ft	36,1ft	39,4ft	42,7ft	45,9ft	49,2ft	52,5ft	55,8ft	59,1ft	62,3ft	65,6ft
1754lx	439lx	195lx	110lx	70lx	49lx	36lx	27lx	22lx	18lx	14lx	12lx	10lx	9lx	8lx	7lx	6lx	5lx	5lx	4lx
163fcd	40,7fcd	18,1fcd	10,2fcd	6,5fcd	4,5fcd	3,3fcd	2,5fcd	2fcd	1,6fcd	1,3fcd	1,1fcd	1fcd	0,8fcd	0,7fcd	0,6fcd	0,6fcd	0,5fcd	0,5fcd	0,4fcd

Intensities in 0° c-plane

0°	5°	10°	15°	20°	25°	30°	35°	40°	45°	50°	55°	60°	65°	70°	75°	80°	85°	90°	95°
1754	1752	1737	1708	1663	1596	1497	1366	1165	844	593	456	338	236	175	143	103	50	7	2
100%	100%	99%	97%	95%	91%	85%	78%	66%	48%	34%	26%	19%	13%	10%	8%	6%	3%	0%	0%

Intensities in 90° c-plane

0°	5°	10°	15°	20°	25°	30°	35°	40°	45°	50°	55°	60°	65°	70°	75°	80°	85°	90°	95°
1754	1752	1737	1708	1663	1596	1497	1366	1165	844	593	456	338	236	175	143	103	50	7	2
100%	100%	99%	97%	95%	91%	85%	78%	66%	48%	34%	26%	19%	13%	10%	8%	6%	3%	0%	0%

Intensities in 180° c-plane

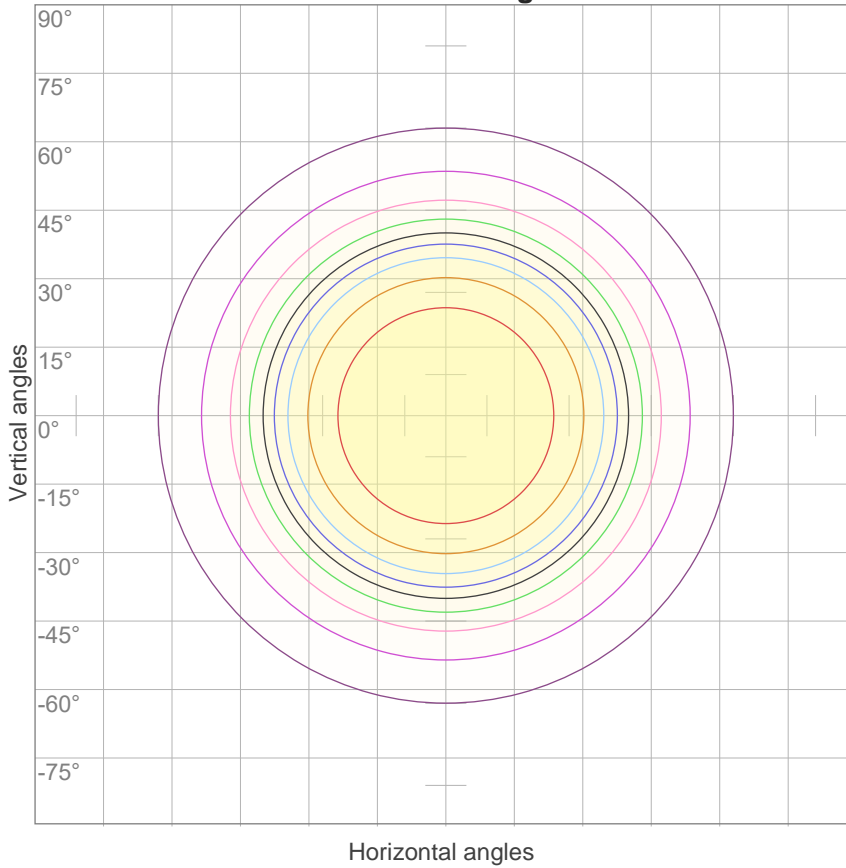
0°	5°	10°	15°	20°	25°	30°	35°	40°	45°	50°	55°	60°	65°	70°	75°	80°	85°	90°	95°
1754	1752	1737	1708	1663	1596	1497	1366	1165	844	593	456	338	236	175	143	103	50	7	2
100%	100%	99%	97%	95%	91%	85%	78%	66%	48%	34%	26%	19%	13%	10%	8%	6%	3%	0%	0%

Intensities in 270° c-plane

0°	5°	10°	15°	20°	25°	30°	35°	40°	45°	50°	55°	60°	65°	70°	75°	80°	85°	90°	95°
1754	1752	1737	1708	1663	1596	1497	1366	1165	844	593	456	338	236	175	143	103	50	7	2
100%	100%	99%	97%	95%	91%	85%	78%	66%	48%	34%	26%	19%	13%	10%	8%	6%	3%	0%	0%

Beam angle 50%	Field angle 10%	Cutoff angle 2,5%	Intensity ratio in 120° cone	Intensity ratio in 90° cone
89°	140°	171,4°	87,5%	68,9%

iso-candela diagram



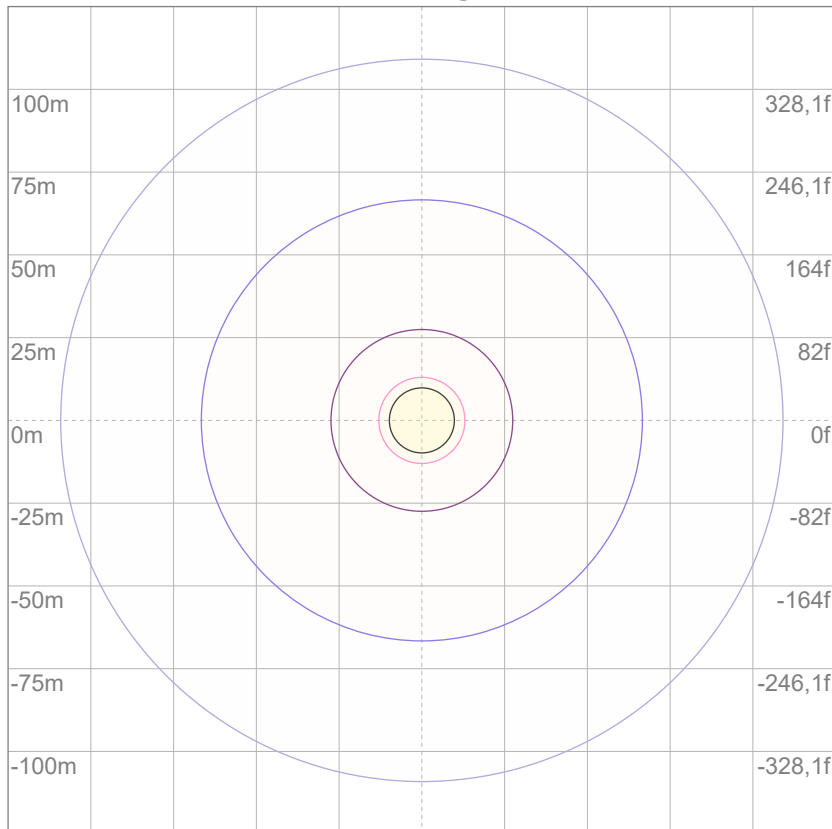
10%	175 cd
20%	351 cd
30%	526 cd
40%	702 cd
50%	877 cd
60%	1052 cd
70%	1228 cd
80%	1403 cd
90%	1579 cd

Conditions:

Number of c-planes: 12

Candela at center: 1754 cd

iso-lux diagram



3%	0,526 lx
5%	0,877 lx
10%	1,75 lx
30%	5,26 lx
50%	8,77 lx

Conditions:

Number of c-planes: 12

Lux at center: 17,5 lx

Lux distribution on a surface when lamp is mounted at 10 meters from the surface.

Glare evaluation according to UGR

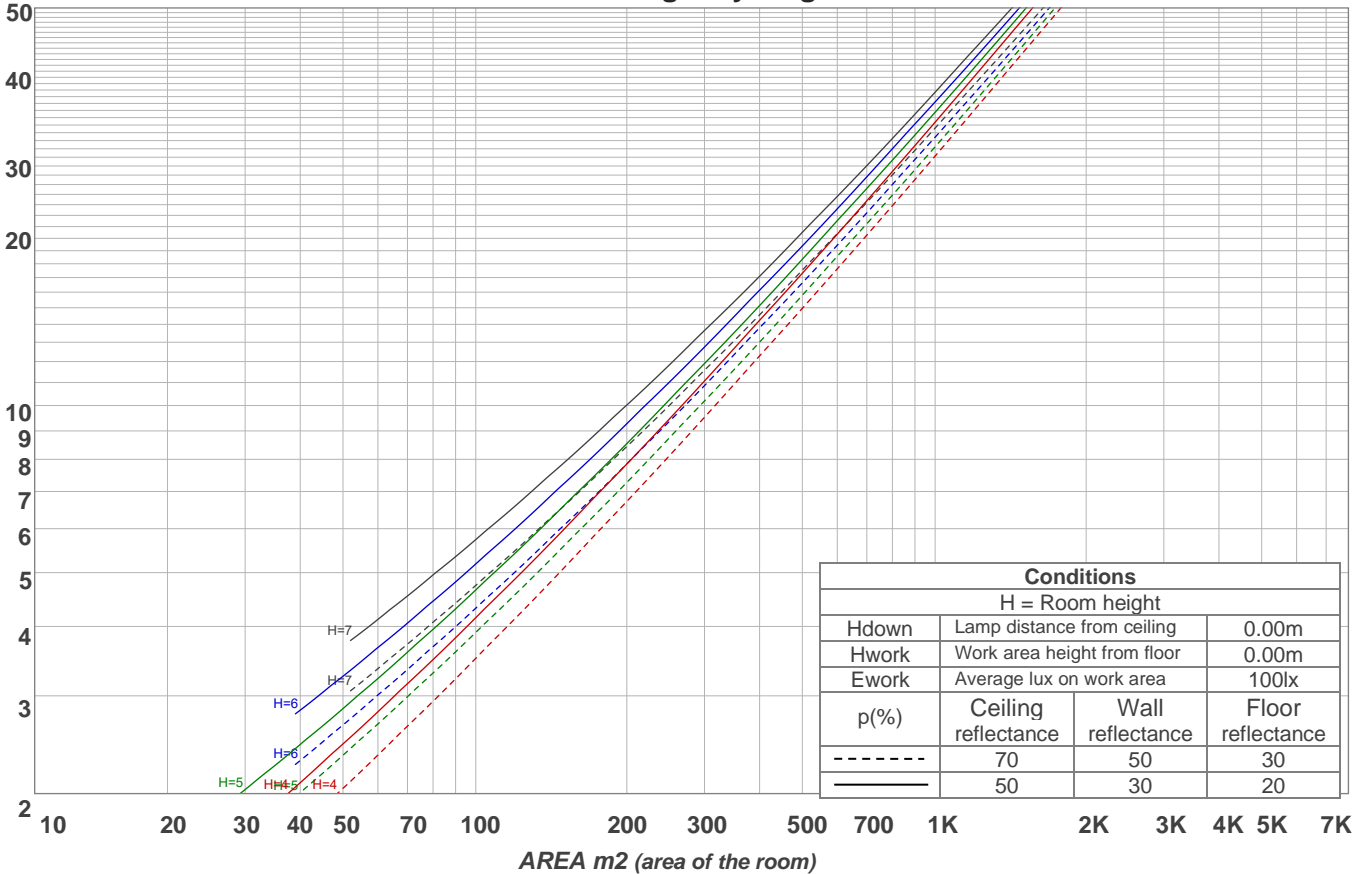
p Ceiling	70	70	50	50	30	70	70	50	50	30	
p Walls	50	30	50	30	30	50	30	50	30	30	
p Floor	20	20	20	20	20	20	20	20	20	20	
Room size X Y	Viewing direction at right angles to lamp axis					Viewing direction parallel to lamp axis					
2H	2H	15,3	16,4	15,5	16,7	16,9	15,3	16,4	15,5	16,7	16,9
	3H	15,9	17,1	16,4	17,3	17,5	15,9	17,1	16,4	17,3	17,5
	4H	16,4	17,4	16,8	17,7	18,0	16,4	17,4	16,8	17,7	18,0
	6H	16,9	17,8	17,2	18,1	18,5	16,9	17,8	17,2	18,1	18,5
	8H	17,1	18,0	17,4	18,3	18,7	17,1	18,0	17,4	18,3	18,7
	12H	17,2	18,1	17,6	18,4	18,9	17,2	18,1	17,6	18,4	18,9
4H	2H	15,5	16,6	15,9	16,9	17,1	15,5	16,6	15,9	16,9	17,1
	3H	16,5	17,4	16,9	17,7	18,2	16,5	17,4	16,9	17,7	18,2
	4H	17,1	17,8	17,5	18,3	18,8	17,1	17,8	17,5	18,3	18,8
	6H	17,7	18,5	18,2	18,8	19,2	17,7	18,5	18,2	18,8	19,2
	8H	18,0	18,7	18,5	19,0	19,4	18,0	18,7	18,5	19,0	19,4
	12H	18,2	18,7	18,7	19,2	19,6	18,2	18,7	18,7	19,2	19,6
8H	4H	17,3	18,0	17,8	18,4	18,8	17,3	18,0	17,8	18,4	18,8
	6H	18,1	18,7	18,7	19,1	19,7	18,1	18,7	18,7	19,1	19,7
	8H	18,6	19,0	19,1	19,5	20,2	18,6	19,0	19,1	19,5	20,2
	12H	18,9	19,2	19,4	19,7	20,4	18,9	19,2	19,4	19,7	20,4
12H	4H	17,3	17,9	17,8	18,3	18,8	17,3	17,9	17,8	18,3	18,8
	6H	18,3	18,7	18,8	19,2	19,9	18,3	18,7	18,8	19,2	19,9
	8H	18,7	19,1	19,3	19,6	20,2	18,7	19,1	19,3	19,6	20,2
Variation of the observer position for the luminaire distance S											
S = 1.0H	0,2 / -0,3					0,2 / -0,3					
S = 1.5H	0,6 / -0,6					0,6 / -0,6					
S = 2.0H	1,3 / -0,9					1,3 / -0,9					
CIE 117-1995. Corrected glare indices referring to 3763 lm total luminous flux											

Coefficients of Utilization

Ceiling reflectance	80				70				50			30			10			0			
Wall reflectance	70	50	30	10	70	50	30	10	50	30	10	50	30	10	50	30	10	0			
Floor reflectance	20	20	20	20	20	20	20	20	20	20	20	20	20	20	20	20	20	20	20	20	0
RCR	(RCR: Room Cavity Ratio)																				
	Room Values are expressed as percentage of Lumens delivered to the task surface																				
0	119	119	119	119	116	116	116	116	111	111	111	106	106	106	102	102	102	99			
1	110	106	102	99	107	104	100	97	99	97	94	96	93	91	92	90	88	86			
2	102	95	89	84	99	93	87	83	89	85	81	86	82	79	83	80	77	75			
3	94	85	78	72	92	83	76	71	80	75	70	77	73	69	75	71	67	65			
4	87	76	68	63	85	75	68	62	72	66	61	70	65	60	68	63	60	58			
5	81	69	61	55	79	68	60	55	66	59	54	64	58	54	62	57	53	51			
6	75	63	55	49	73	62	54	49	60	53	48	59	52	48	57	52	47	46			
7	70	58	50	44	68	57	49	44	55	48	43	54	48	43	52	47	43	41			
8	65	53	45	40	64	52	45	40	51	44	39	50	44	39	49	43	39	37			
9	61	49	41	36	60	48	41	36	47	40	36	46	40	36	45	39	35	34			
10	58	45	38	33	56	45	38	33	44	37	33	43	37	33	42	36	32	31			

LAMPS (number of lamps)

Luminaire budgetary diagram



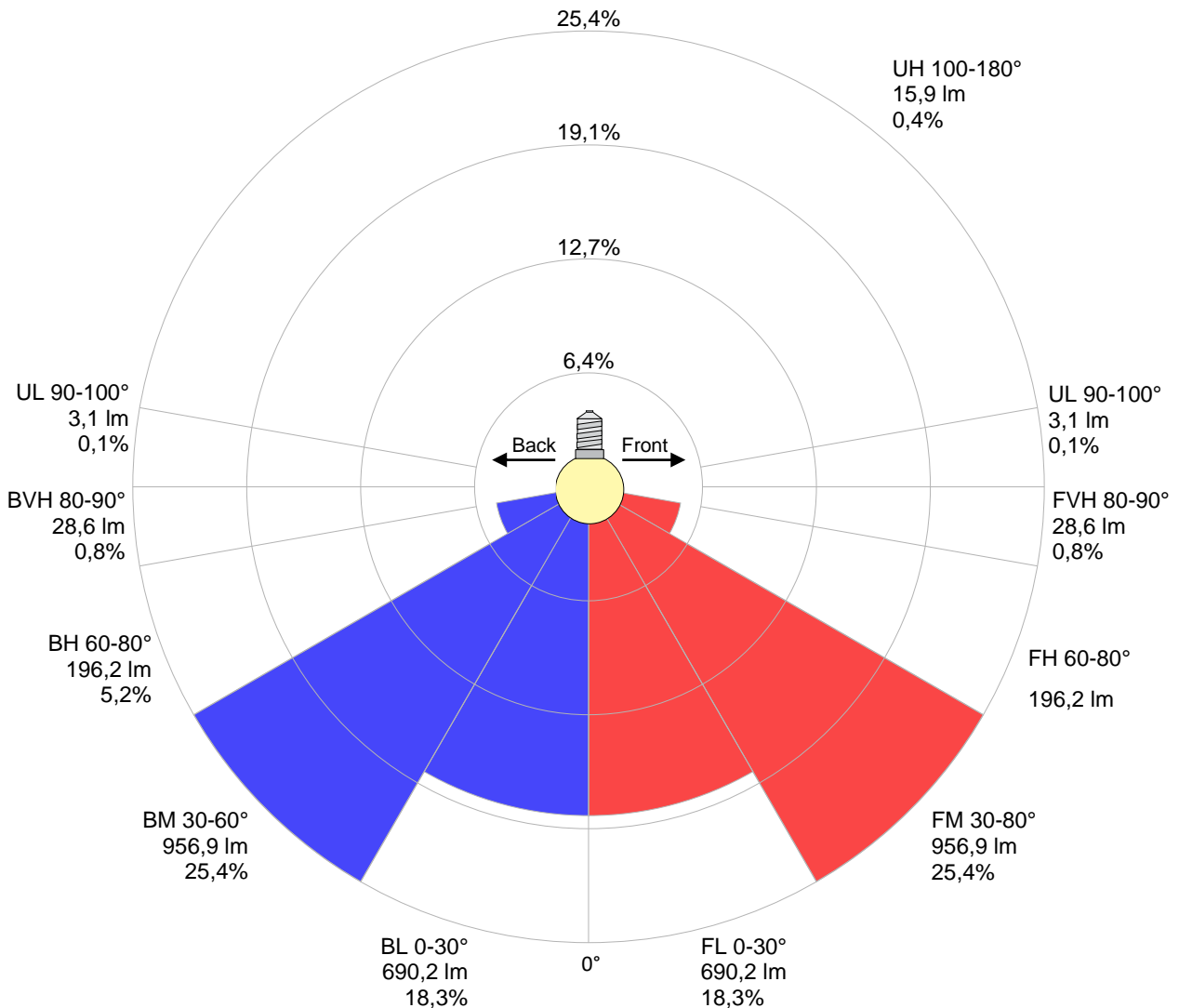
Zonal Lumen Summary

0°-10°	10°-20°	20°-30°	30°-40°	40°-50°	50°-60°	60°-70°	70°-80°	80°-90°
{LUM0-10}	482 lm	732 lm	842 lm	660 lm	411 lm	243 lm	149 lm	57,1 lm
90°-100°	100°-110°	110°-120°	120°-130°	130°-140°	140°-150°	150°-160°	160°-170°	170°-180°
3,15 lm	1,82 lm	2,38 lm	2,67 lm	2,73 lm	2,49 lm	1,99 lm	1,34 lm	0,493 lm

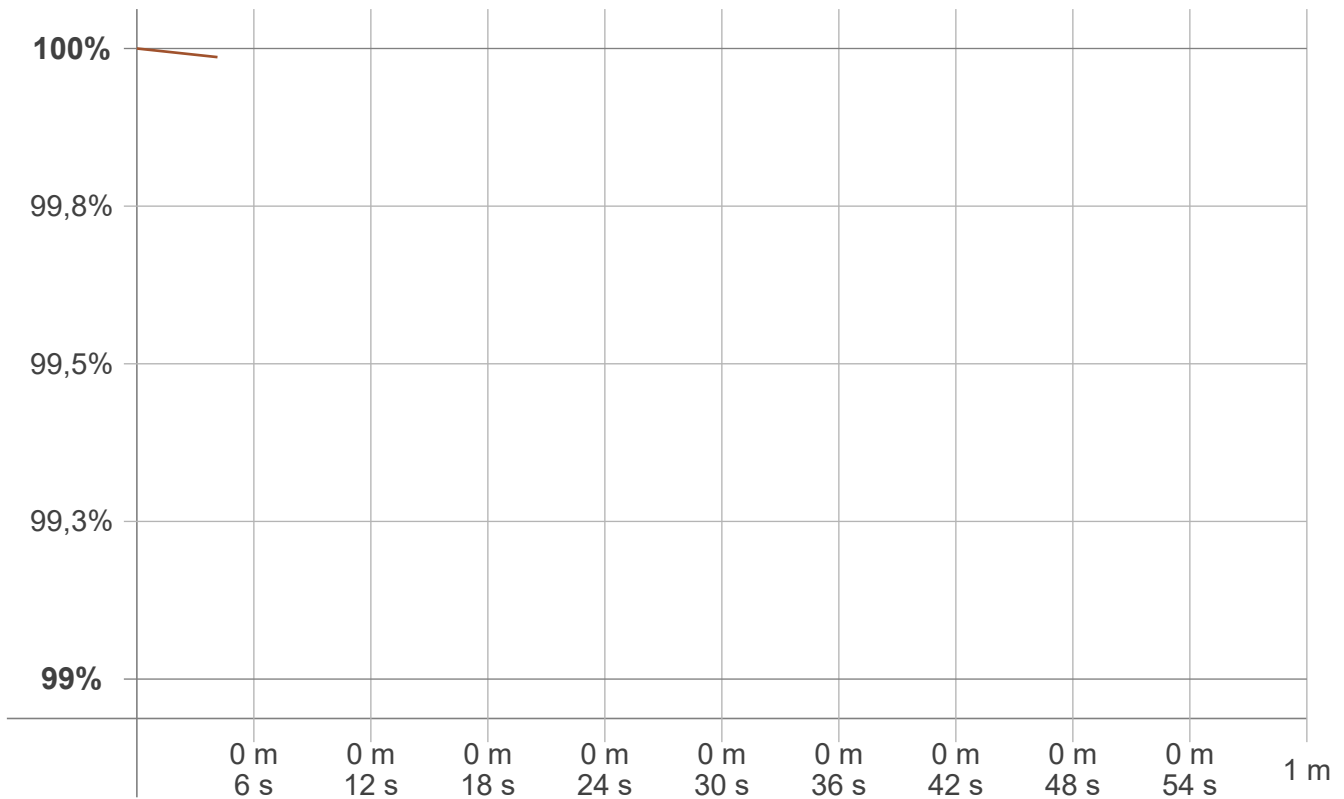
LCS table

BUG rating:	B2 U2 G1	
Forward light	Lumens	Lumens %
Low(0-30):	690,2	18,3%
Medium(30-60):	956,9	25,4%
High(60-80):	196,2	5,2%
Very high(80-90):	28,6	0,8%
Back light		
Low(0-30):	690,2	18,3%
Medium(30-60):	956,9	25,4%
High(60-80):	196,2	5,2%
Very high(80-90):	28,6	0,8%
Uplight		
Low(90-100):	3,1	0,1%
High(100-180):	15,9	0,4%

LCS graph



Warmup curve



Warmup result

Warmup time:	Not completed
Warmup variation	0,0%

Warmup conditions

Stable period:	15 min
Stable change max:	2,0%
Minimum time:	15 min

Color temperature change

CCT start	CCT change	CCT end
5997 K	+3 K	6000 K

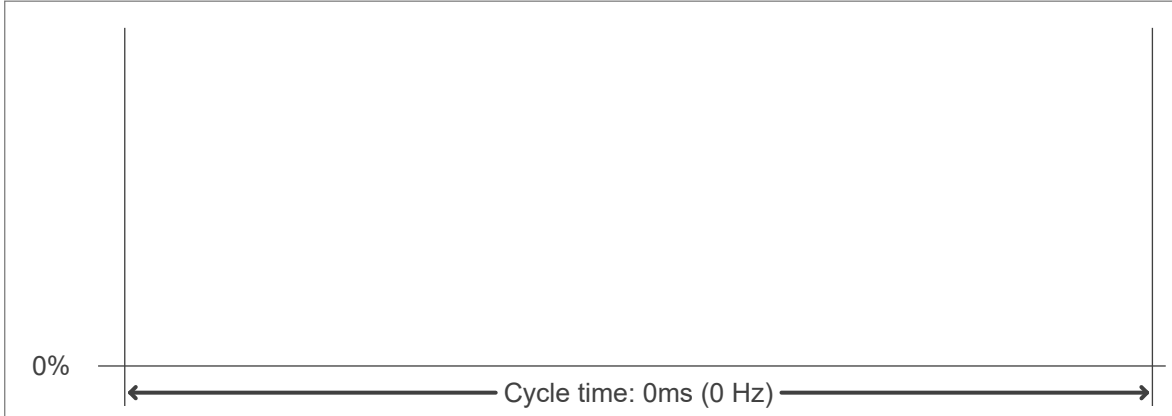
Output change

Output start	Output change	Output end
3763 lm	-1 lm	3763 lm

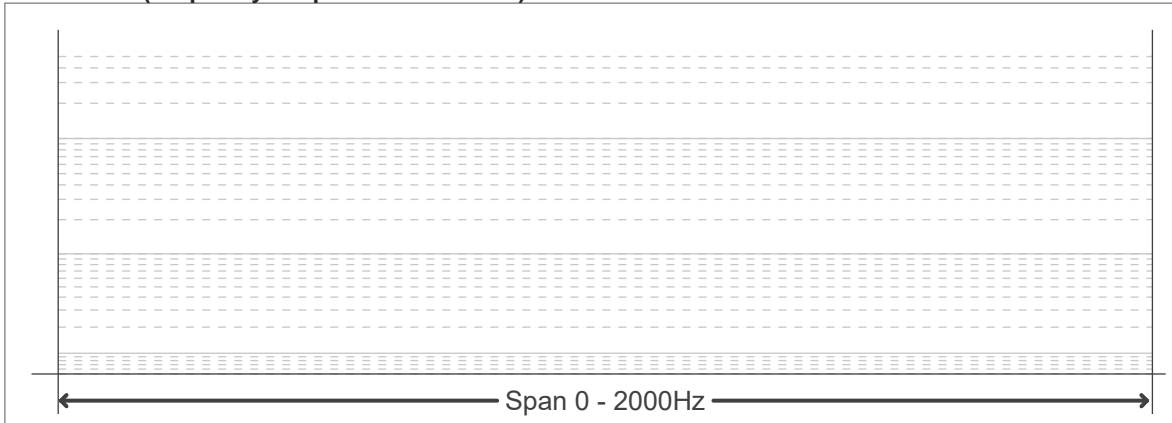
Flicker curve (complete sampled flicker signal)



Flicker frame (frame of one flicker period)



Flicker FFT (frequency scope of flicker curve)



Flicker results:

Flicker frequency:		n/a Hz	
Flicker index:	n/a	JA8/10 40Hz	n/a %
Flicker percentage:	n/a %	JA8/10 90Hz	n/a %
SVM: (Visual flicker)	n/a	JA8/10 200Hz	n/a %
PstLM	n/a	JA8/10 400Hz	n/a %
Mp	n/a	JA8/10 1000Hz	n/a %

Flicker conditions:

Sample rate:	n/a samples/second
--------------	--------------------