

Light efficiency:

96 Lumen/Watt

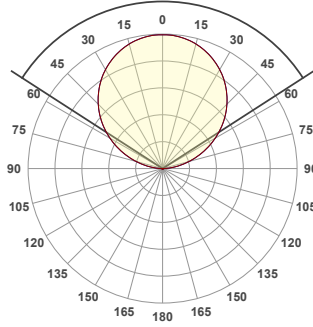
Light quality:

CRI: 82,4

Color temperature:

3000 K

114,3°



Product name:

273399-3000K

Item number:

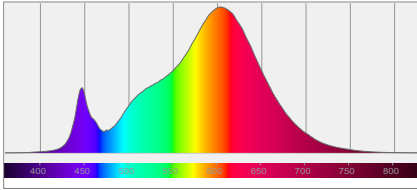
273399-3000K

Date and time:

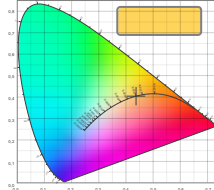
3-10-2024 13:42:29

Output: 3800 Lumen Power consumption: 39,6

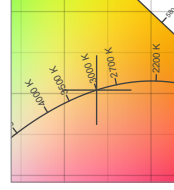
Spectral distribution



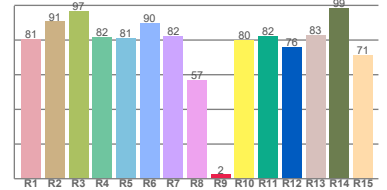
Color coordinates



White color point

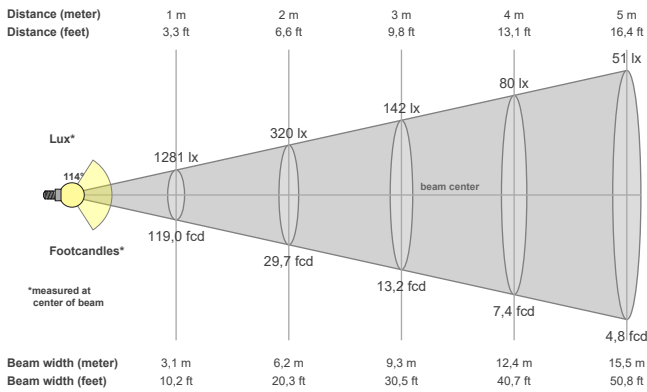


CRI R values



| Color temperature | Color rendering index | Red component | Color fidelity | Color gamut | Color quality scale | Color coordinate cie 1931 | Color coordinate cie 1931 | Color coordinate | Color coordinate | Color deviation from black body |
|-------------------|-----------------------|---------------|----------------|-------------|---------------------|---------------------------|---------------------------|------------------|------------------|---------------------------------|
| CCT | CRI | CRI R9 | TM30 Rf | TM30 Rg | CQS | x | y | u | v | Δuv |
| 3000 K | 82,4 | 2,4 | 85,5 | 96,0 | 82,4 | 0,437 | 0,404 | 0,251 | 0,348 | 0,0013 |

Beam details



Beam angles

| Beam angle 50% | Field angle 10% | Cutoff angle 2,5% |
|----------------|-----------------|-------------------|
| 114,3° | 163,8° | 176,1° |

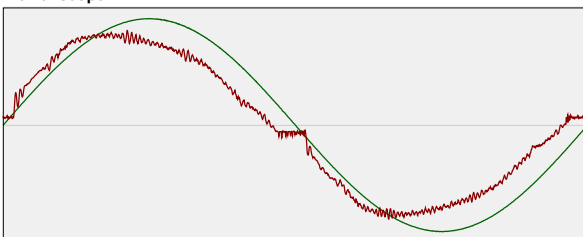
Beam intensities

| Peak intensity | Int. ratio in 120° cone | Int. ratio in 90° cone |
|----------------|-------------------------|------------------------|
| 1281 cd | 77,0% | 52,2% |

Beam intensities from 1-20m

| 1m | 2m | 3m | 4m | 5m | 6m | 7m | 8m | 9m | 10m | 11m | 12m | 13m | 14m | 15m | 16m | 17m | 18m | 19m | 20m |
|--------|---------|---------|--------|--------|--------|--------|--------|--------|--------|--------|--------|--------|--------|--------|--------|--------|--------|--------|--------|
| 3,3ft | 6,6ft | 9,8ft | 13,1ft | 16,4ft | 19,7ft | 23ft | 26,2ft | 29,5ft | 32,8ft | 36,1ft | 39,4ft | 42,7ft | 45,9ft | 49,2ft | 52,5ft | 55,8ft | 59,1ft | 62,3ft | 65,6ft |
| 1281lx | 320lx | 142lx | 80lx | 51lx | 36lx | 26lx | 20lx | 16lx | 13lx | 11lx | 9lx | 8lx | 7lx | 6lx | 5lx | 4lx | 4lx | 4lx | 3lx |
| 119fcd | 29,7fcd | 13,2fcd | 7,4fcd | 4,8fcd | 3,3fcd | 2,4fcd | 1,9fcd | 1,5fcd | 1,2fcd | 1fcd | 0,8fcd | 0,7fcd | 0,6fcd | 0,5fcd | 0,5fcd | 0,4fcd | 0,4fcd | 0,3fcd | 0,3fcd |

Power scope



| Power | Power factor | Power frequency |
|--------|--------------|-----------------|
| 39,6 W | 0,97 | {FREQ} Hz |

| Nominal voltage | Voltage | Current |
|-----------------|---------|---------|
| 230 V | 230 V | 0,177 A |