

# Light Measurement Report

Print date: 30-4-2025

Measurement date and time: 30-4-2025 08:51:45 – Measurement no. VFR-250430-0985-MS

Measurement tracking No. and Link: [VT250430-002104](#)

Operator:



## Laboratory and Equipment

Laboratory Owner and Location  
Goniospectrometer System and Type  
Sensor Name, Calibr. Date and Serial No.  
Spectrometer Manufacturer and Model

Viso Systems, Copenhagen V, Denmark  
LabSpion – Type C, horizontal  
LabSensor Model2 – 11-1-2024 – 3130191315  
Ibsen Photonics, Denmark – Freedom VIS (Custom Viso)

## Measurement Conditions

Number of C-planes and Resolution  
 $\gamma$  (gamma)-Resolution  
Test Distance  
Input Power, Power and Displ. Factors  
Input RMS Voltage and Current  
Frequency of Input Power  
Warm-up Time and Variation

12 planes – 30°  
5°  
3,47 m  
92,7 W – PF 0,96 – DPF 0,96  
230 V – 0,421 A  
50 Hz  
Lamp stabilized in 15 min 1 sec – 2,0%

## Tested Light Source

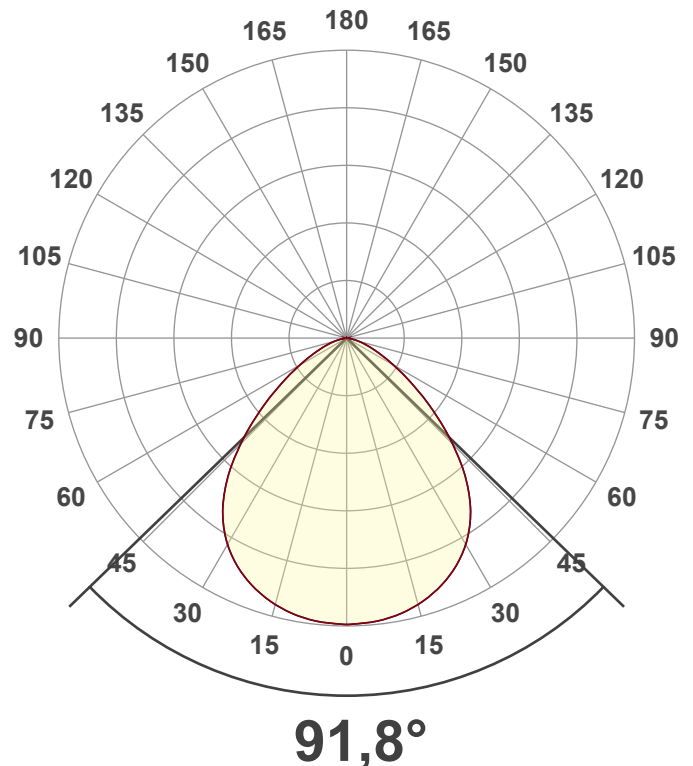
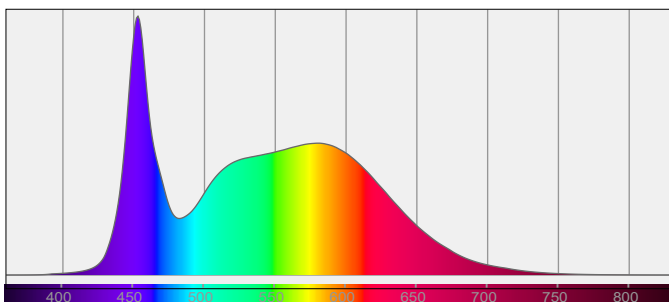
Product Name  
Item No. and Manufacturer  
Product Description (line 1)

278455-6000K-80W  
278455-6000K-80W – Dutchfulfillment  
LED HIGHBAY | ANANKE | 90° | 150W/120W/80W | CCT SWITCH

## Main Light Measurement Results

Output – Total Lumen (Up% / Down%)  
Efficiency  
Peak Intensity and Beam Angle  
Correlated Color Temperature, Target/Measured  
Color Rendering Index  
Color Rendering TM30-18  
Color Shift, CIE duv and MacAdam Steps  
Flicker

13792 lm – 0,13% / 99,87%  
149 lm/W  
6618 cd – 91,8°  
CCT = 6000 K / 5640 K  
CRI 81,6  
 $R_f$  81,9 –  $R_g$  93,4  
Duv 0,0037 – SDCM 6,8  
SVM 0,01 – PstLM 0,02



# Light Measurement Report

Print date: 30-4-2025

Measurement date and time: 30-4-2025 08:51:45 – Measurement no. VFR-250430-0985-MS

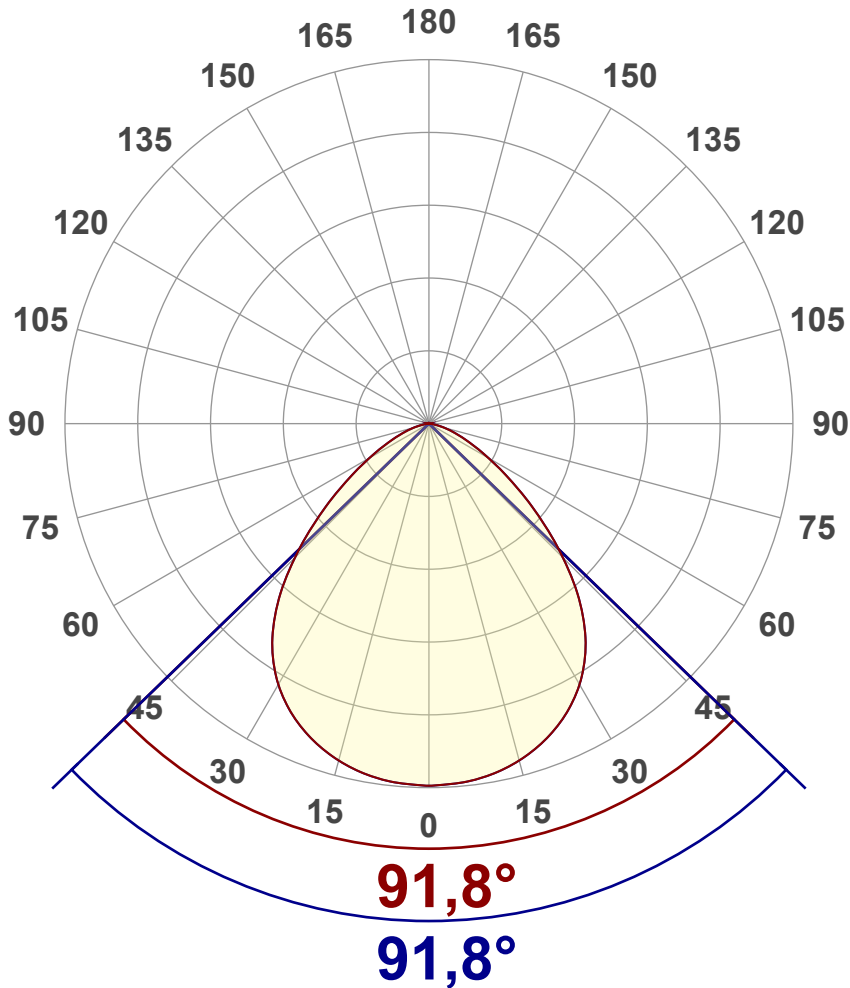
Measurement tracking No. and Link: [VT250430-002104](#)

Operator:



## Luminous Intensity diagram

Unit: 0-100% of peak intensity



## Main Values

Output (total Lumen)	13792 lm
Lumen Up% / Down%	0,13% / 99,87%
Peak Intensity	6618 cd
Beam Angle (50%)	91,8°
Beam Angle (90%)	91,8°
Beam Angle (10%)	91,8°

## Cut-off Angle

Average 2,5%	157,5°
--------------	--------

## Field Angle

Average 10%	135°
-------------	------

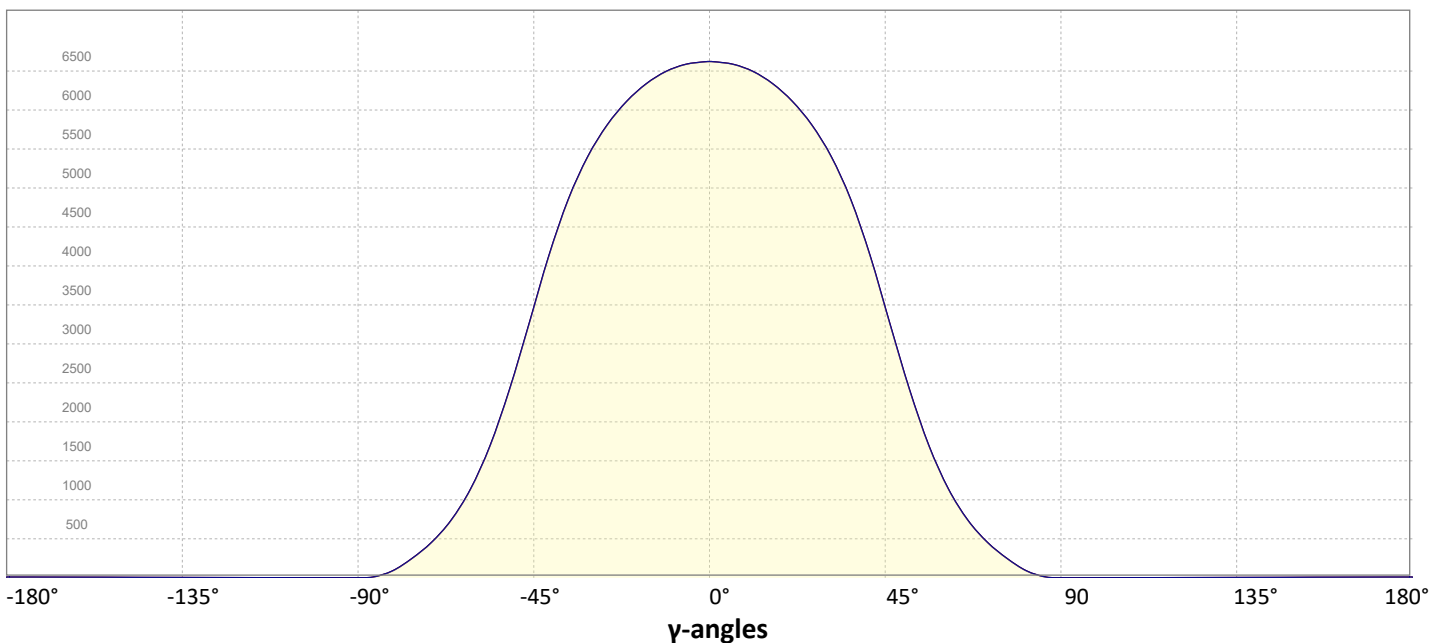
## Intensity Ratio

In 120° cone	91,2%
In 90° cone	70,1%

**C000-C180**

**C090-C270**

## Linear distribution diagram - Intensity (candela) vs $\gamma$ -angle



# Light Measurement Report

Print date: 30-4-2025

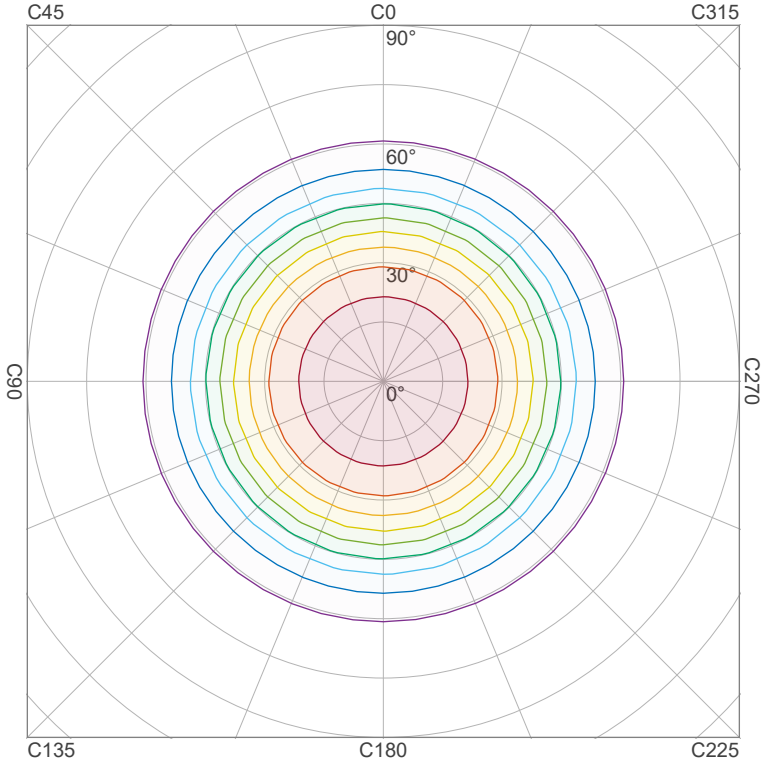
Measurement date and time: 30-4-2025 08:51:45 – Measurement no. VFR-250430-0985-MS

Measurement tracking No. and Link: [VT250430-002104](#)

Operator:



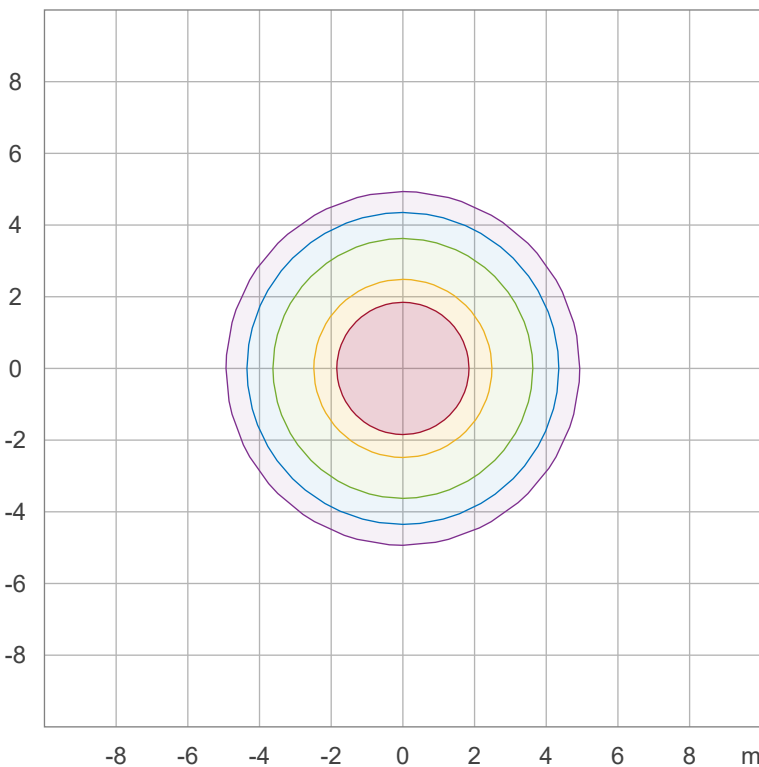
## Iso-intensity Diagram (Iso-candela)



90 %	5956,6 cd
80 %	5294,8 cd
70 %	4632,9 cd
60 %	3971,1 cd
50 %	3309,2 cd
40 %	2647,4 cd
30 %	1985,5 cd
20 %	1323,7 cd
10 %	661,8 cd

Peak intensity: 6618,5 cd  
Number of c-planes: 12

## Iso-illuminance Diagram (Iso-lux)



50,0 %	367,7 lx
30,0 %	220,6 lx
10,0 %	73,5 lx
5,0 %	36,8 lx
3,0 %	22,1 lx

Peak illuminance: 735,4 lx  
Mounting height: 3,0 m  
Number of c-planes: 12

# Light Measurement Report

Print date: 30-4-2025

Measurement date and time: 30-4-2025 08:51:45 – Measurement no. VFR-250430-0985-MS

Measurement tracking No. and Link: [VT250430-002104](#)

Operator:

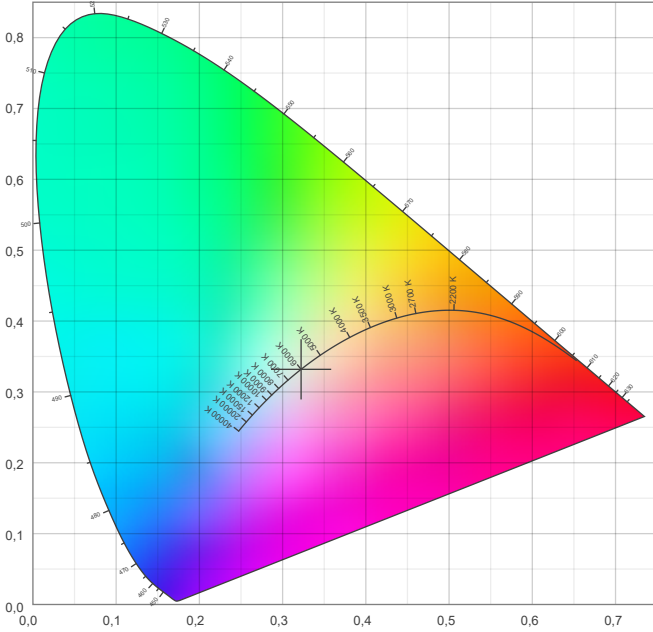


## Color details

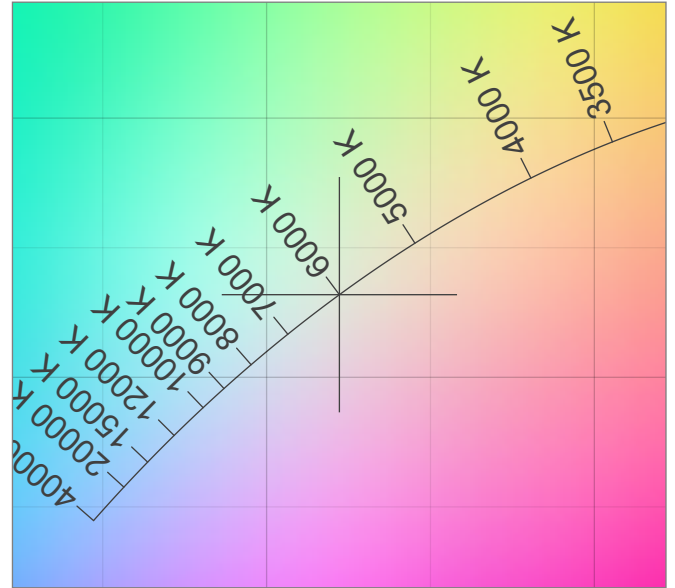
Correlated Color Temperature, Target CCT = 6000 K  
 Correlated Color Temperature, Measured CCT = 5640 K  
 Color Rendering Index CRI 81,6  
 Color Rendering Index, R9 (red component) R9 = -4,9  
 Color Rendering TM30-18 R<sub>f</sub> 81,9 – R<sub>g</sub> 93,4  
 Color Quality Scale CQS = 79,0

MacAdam Steps SDCM = 6,8  
 Color coordinates CIE 1931 (x;y) = (0,322;0,332)  
 Color coordinate CIEs 1960 (u;v) = (0,203;0,314)  
 Color deviation from BBL Duv = 0,0037  
 Color coordinate CIEs 1976 (CIELUV) (u';v') = (0,203;0,471)

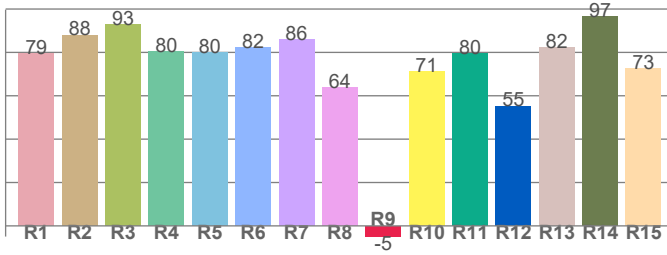
### CIE 1931



### CIE 1931 – zoomed on Planckian locus



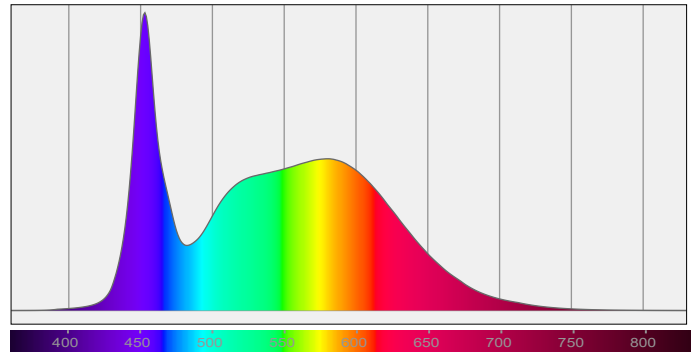
### Color Rendering Index per reference color (CIE 1995)



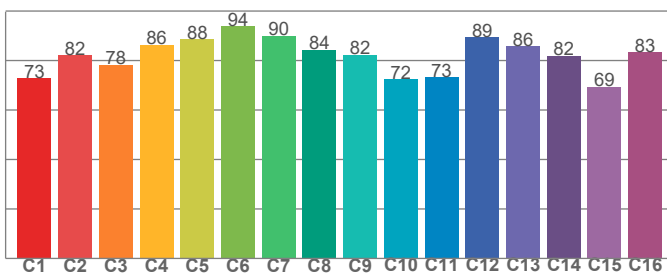
CRI R values, only R1-R8 are used to calculate final CRI value

R1	R2	R3	R4	R5	R6	R7	R8	R9	R10	R11	R12	R13	R14	R15
79,4	88,0	92,9	80,3	79,8	82,4	85,8	64,0	-4,9	71,1	79,6	55,3	82,1	96,5	72,5

### Spectral power distribution (SPD) / W/nm – 0-100%



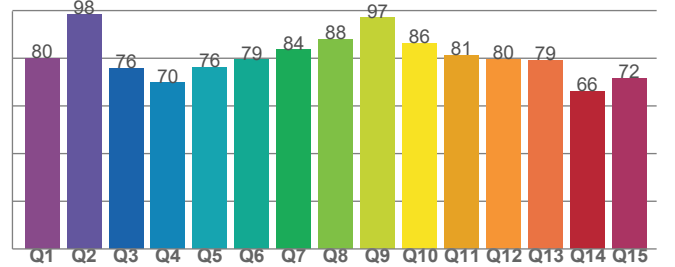
### TM30-18 R<sub>f</sub>-values per hue bin



TM30 C values, 16 binned values out of total of 99 C values

C1	C2	C3	C4	C5	C6	C7	C8	C9	C10	C11	C12	C13	C14	C15	C16
72,7	82,3	78,2	86,3	88,5	93,8	90,0	84,4	82,4	72,4	73,2	89,5	85,9	81,9	69,4	83,5

### Color Quality Scale by reference color



CQS Q values

Q1	Q2	Q3	Q4	Q5	Q6	Q7	Q8	Q9	Q10	Q11	Q12	Q13	Q14	Q15
80,0	98,5	75,9	69,8	76,2	79,4	83,6	88,0	96,9	86,3	81,4	79,7	79,2	66,1	71,6

# Light Measurement Report

Print date: 30-4-2025

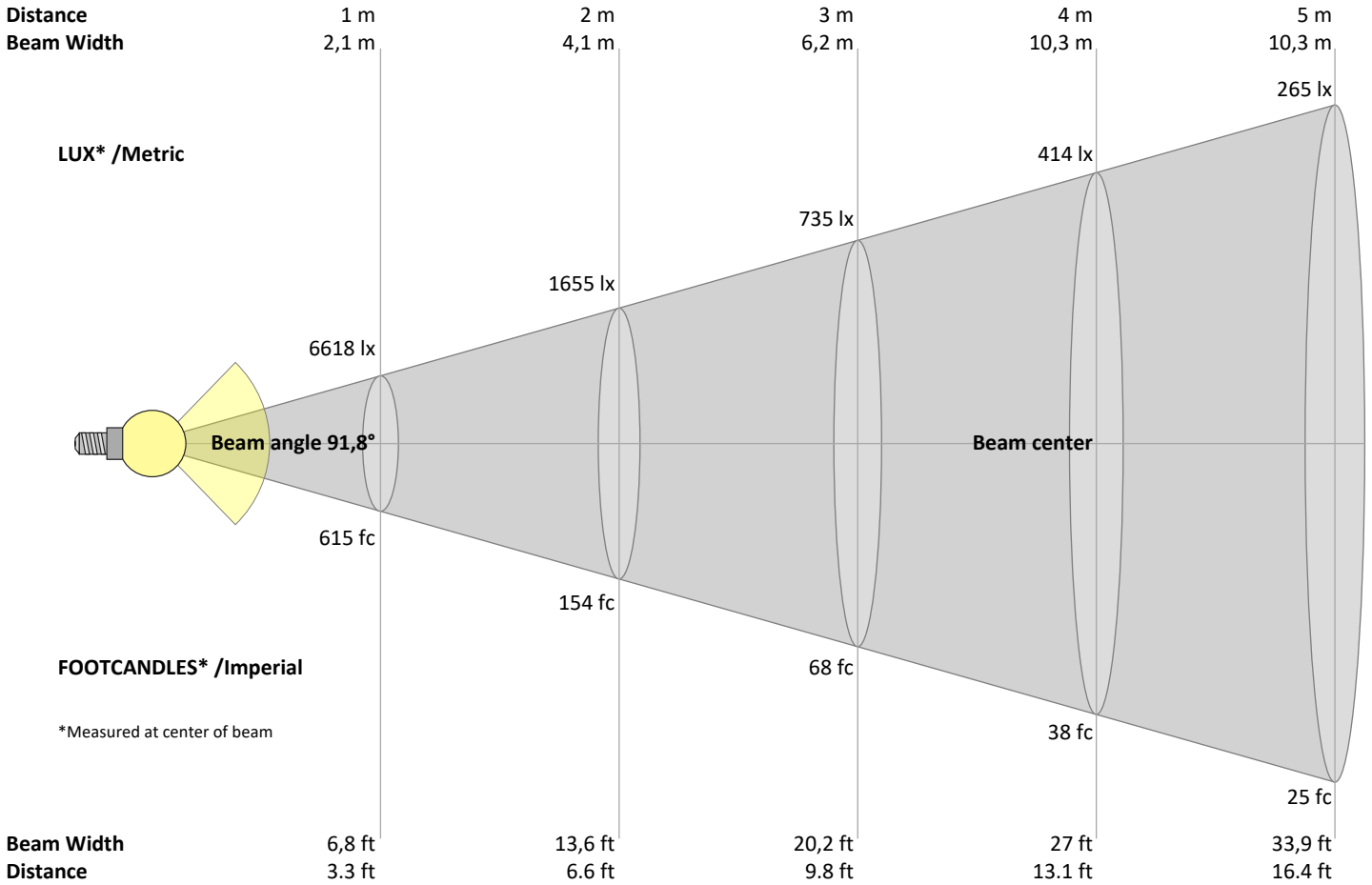
Measurement date and time: 30-4-2025 08:51:45 – Measurement no. VFR-250430-0985-MS

Measurement tracking No. and Link: [VT250430-002104](https://www.viso-systems.com/VT250430-002104)

Operator:



## Beam Details



### Beam intensities from 1 – 20 m

1	2	3	4	5	6	7	8	9	10	11	12	13	14	15	16	17	18	19	20	m
3,3	6,6	9,8	13,1	16,4	19,7	23	26,2	29,5	32,8	36,1	39,4	42,7	45,9	49,2	52,5	55,8	59,1	62,3	65,6	ft
6618	1655	735	414	265	184	135	103	82	66	55	46	39	34	29	26	23	20	18	17	lux
614,9	153,7	68,3	38,4	24,6	17,1	12,5	9,6	7,6	6,1	5,1	4,3	3,6	3,1	2,7	2,4	2,1	1,9	1,7	1,5	fc

### Intensities in 0° c-plane

0°	5°	10°	15°	20°	25°	30°	35°	40°	45°	50°	55°	60°	65°	70°	75°	80°	85°	90°	95°	γ
6618	6593	6515	6374	6166	5881	5498	4981	4296	3466	2620	1867	1271	833	521	297	126	28	2	0	cd
100%	100%	98%	96%	93%	89%	83%	75%	65%	52%	40%	28%	19%	13%	8%	4%	2%	0%	0%	0%	of 0°val

### Intensities in 90° c-plane

0°	5°	10°	15°	20°	25°	30°	35°	40°	45°	50°	55°	60°	65°	70°	75°	80°	85°	90°	95°	γ
6618	6593	6515	6374	6166	5881	5498	4981	4296	3466	2620	1867	1271	833	521	297	126	28	2	0	cd
100%	100%	98%	96%	93%	89%	83%	75%	65%	52%	40%	28%	19%	13%	8%	4%	2%	0%	0%	0%	of 0°val

### Intensities in 180° c-plane

0°	5°	10°	15°	20°	25°	30°	35°	40°	45°	50°	55°	60°	65°	70°	75°	80°	85°	90°	95°	γ
6618	6593	6515	6374	6166	5881	5498	4981	4296	3466	2620	1867	1271	833	521	297	126	28	2	0	cd
100%	100%	98%	96%	93%	89%	83%	75%	65%	52%	40%	28%	19%	13%	8%	4%	2%	0%	0%	0%	of 0°val

### Intensities in 270° c-plane

0°	5°	10°	15°	20°	25°	30°	35°	40°	45°	50°	55°	60°	65°	70°	75°	80°	85°	90°	95°	γ
6618	6593	6515	6374	6166	5881	5498	4981	4296	3466	2620	1867	1271	833	521	297	126	28	2	0	cd
100%	100%	98%	96%	93%	89%	83%	75%	65%	52%	40%	28%	19%	13%	8%	4%	2%	0%	0%	0%	of 0°val

# Light Measurement Report

Print date: 30-4-2025

Measurement date and time: 30-4-2025 08:51:45 – Measurement no. VFR-250430-0985-MS

Measurement tracking No. and Link: [VT250430-002104](#)

Operator:



## Light Planning – UGR table

Uncorrected, comprehensive UGR table according to 117-1995

Reflectances		70	70	50	50	30	70	70	50	50	30
	ρ Ceiling	70	70	50	50	30	70	70	50	50	30
	ρ Walls	50	30	50	30	30	50	30	50	30	30
	ρ Floor	20	20	20	20	20	20	20	20	20	20
Room size		Viewed Crosswise					Viewed Endwise				
H = mounting height above eye level		(Viewing direction orthogonal to lamp length axis)					(Viewing direction parallel to lamp length axis)				
X	Y										
2H	2H	27,1	28,1	27,2	28,4	28,6	27,1	28,1	27,2	28,4	28,6
	3H	27,4	28,4	27,8	28,7	28,9	27,4	28,4	27,8	28,7	28,9
	4H	27,5	28,5	27,9	28,7	29,0	27,5	28,5	27,9	28,7	29,0
	6H	27,5	28,4	27,9	28,7	29,1	27,5	28,4	27,9	28,7	29,1
	8H	27,5	28,4	27,9	28,7	29,1	27,5	28,4	27,9	28,7	29,1
	12H	27,5	28,3	27,8	28,6	29,1	27,5	28,3	27,8	28,6	29,1
4H	2H	27,2	28,2	27,6	28,5	28,7	27,2	28,2	27,6	28,5	28,7
	3H	27,8	28,6	28,1	28,9	29,4	27,8	28,6	28,1	28,9	29,4
	4H	27,8	28,6	28,3	29,0	29,6	27,8	28,6	28,3	29,0	29,6
	6H	27,9	28,6	28,4	29,0	29,4	27,9	28,6	28,4	29,0	29,4
	8H	27,9	28,6	28,4	28,9	29,3	27,9	28,6	28,4	28,9	29,3
	12H	27,8	28,4	28,3	28,8	29,3	27,8	28,4	28,3	28,8	29,3
8H	4H	27,8	28,5	28,4	28,9	29,3	27,8	28,5	28,4	28,9	29,3
	6H	28,0	28,4	28,5	28,9	29,4	28,0	28,4	28,5	28,9	29,4
	8H	28,0	28,4	28,5	28,9	29,6	28,0	28,4	28,5	28,9	29,6
	12H	28,0	28,3	28,5	28,8	29,4	28,0	28,3	28,5	28,8	29,4
12H	4H	27,8	28,4	28,3	28,8	29,2	27,8	28,4	28,3	28,8	29,2
	6H	28,0	28,4	28,5	28,9	29,5	28,0	28,4	28,5	28,9	29,5
	8H	28,0	28,3	28,5	28,8	29,4	28,0	28,3	28,5	28,8	29,4

### Variations with the observer position for the luminaire spacings, S:

S = 1.0H	0,4 / -0,7	0,4 / -0,7
S = 1.5H	1,2 / -1,7	1,2 / -1,7
S = 2.0H	2,4 / -3,0	2,4 / -3,0

## Coefficients of Utilization

Ceiling reflectance	80			70			50			30			10			0		
Wall reflectance	70	50	30	10	70	50	30	10	50	30	10	50	30	10	50	30	10	0
Floor reflectance	20	20	20	20	20	20	20	20	20	20	20	20	20	20	20	20	20	0
RCR	(RCR: Room Cavity Ratio)																	
	Room Values are expressed as percentage of Lumen delivered to the task surface																	
0	119	119	119	119	116	116	116	116	111	111	106	106	106	102	102	102	100	100
1	111	107	104	101	108	105	102	99	101	98	96	97	95	93	93	92	90	88
2	103	96	90	86	100	94	89	85	91	86	83	87	84	81	85	82	79	77
3	95	86	79	74	93	85	78	73	82	76	72	79	74	70	77	73	69	67
4	88	77	70	64	86	76	69	64	74	68	63	72	66	62	70	65	61	59
5	81	70	62	56	80	69	62	56	67	61	56	65	59	55	63	58	54	52
6	76	64	56	50	74	63	55	50	61	54	49	60	54	49	58	53	49	47
7	71	58	50	45	69	58	50	45	56	49	44	55	49	44	53	48	44	42
8	66	54	46	40	64	53	46	40	52	45	40	50	44	40	49	44	40	38
9	62	49	42	37	60	49	42	37	48	41	36	47	41	36	46	40	36	34
10	58	46	38	34	57	45	38	34	44	38	33	43	37	33	43	37	33	31

# Light Measurement Report

Print date: 30-4-2025

Measurement date and time: 30-4-2025 08:51:45 – Measurement no. VFR-250430-0985-MS

Measurement tracking No. and Link: [VT250430-002104](#)

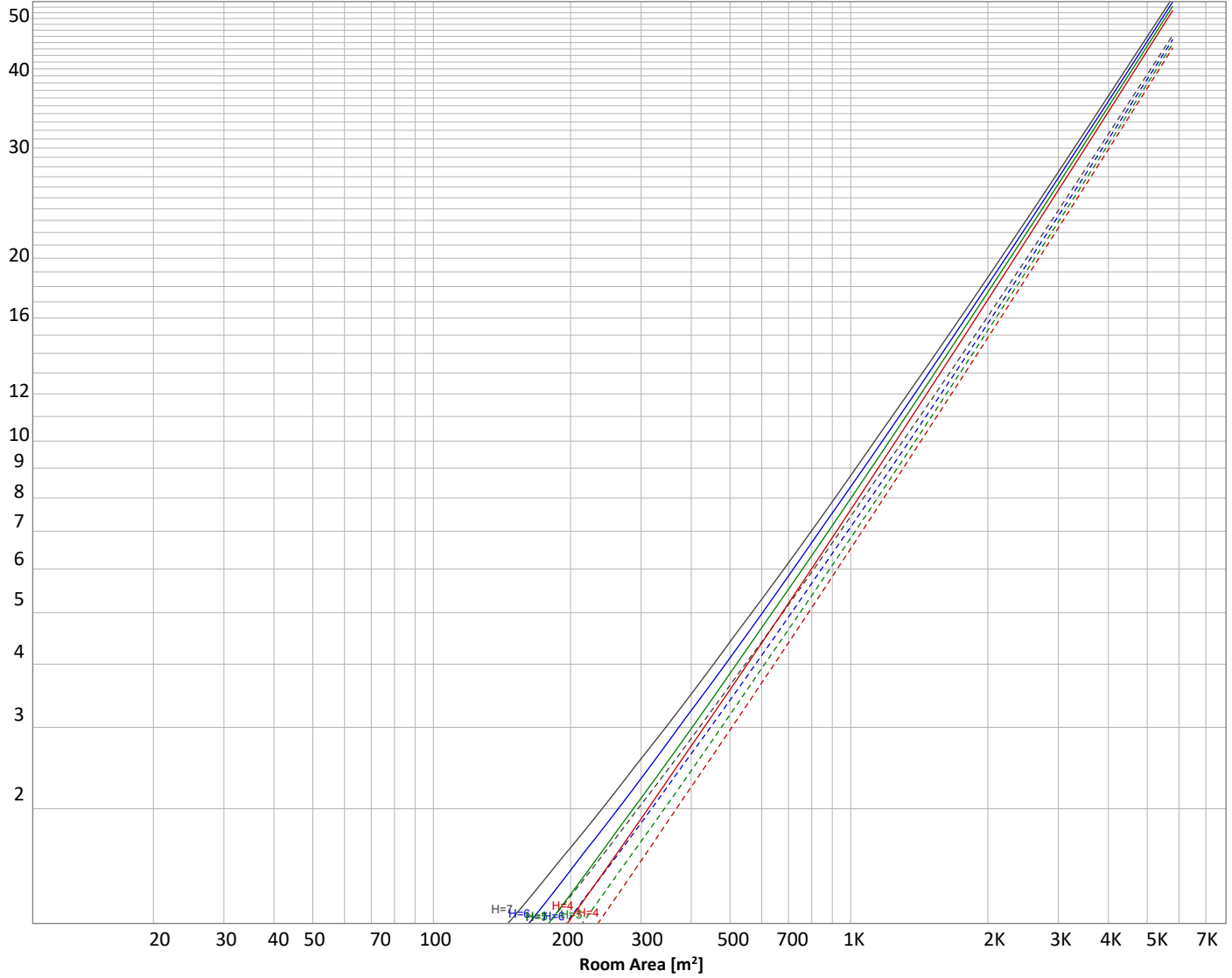
Operator:



## Luminaire budgetary diagram

Uncorrected, comprehensive UGR table according to 117-1995

LAMPS (number of lamps)



### Conditions

H = Room height	Flux = 13792 lm			
H <sub>down</sub> = Lamp distance from ceiling =	0.00 m	Line type	Ceiling reflectance	ρ(%) Wall reflectance
H <sub>work</sub> = Work area height from floor =	0.00 m	-----	70	50
E <sub>work</sub> = Average lux on work area =	100 lx	—————	50	30
				Floor reflectance
				20

### Zonal Lumen Summary

0°-10°	10°-20°	20°-30°	30°-40°	40°-50°	50°-60°	60°-70°	70°-80°	80°-90°
627 lm	1799 lm	2706 lm	3098 lm	2666 lm	1682 lm	837 lm	319 lm	40,5 lm
90°-100°	100°-110°	110°-120°	120°-130°	130°-140°	140°-150°	150°-160°	160°-170°	170°-180°
0,116 lm	0,695 lm	1,51 lm	2,44 lm	3,19 lm	3,31 lm	3,20 lm	2,24 lm	0,827 lm

# Light Measurement Report

Print date: 30-4-2025

Measurement date and time: 30-4-2025 08:51:45 – Measurement no. VFR-250430-0985-MS

Measurement tracking No. and Link: [VT250430-002104](#)

Operator:



## Outdoor Light Planning

### Lumen per Zone

Zone (γ)	Lumen	% Total
0-10°	627 lm	4,5%
10-20°	1799 lm	13,0%
20-30°	2706 lm	19,6%
30-40°	3098 lm	22,5%
40-50°	2666 lm	19,3%
50-60°	1682 lm	12,2%
60-70°	837 lm	6,1%
70-80°	319 lm	2,3%
80-90°	40 lm	0,3%
90-100°	0 lm	0,0%
100-110°	1 lm	0,0%
110-120°	2 lm	0,0%
120-130°	2 lm	0,0%
130-140°	3 lm	0,0%
140-150°	3 lm	0,0%
150-160°	3 lm	0,0%
160-170°	2 lm	0,0%
170-180°	1 lm	0,0%
<b>Total</b>	<b>13792 lm</b>	<b>100,0%</b>

### Intensity peaks

Max intensity	6618 cd
Intensity, 90°	2 cd
Intensity, 0°	6618 cd

### Zonal Lumen summary

Zone (γ)	Lumen	% Total
0-30°	5131 lm	37,2%
0-40°	8229 lm	59,7%
0-60°	12578 lm	91,2%
60-90°	1196 lm	8,7%
70-100°	359 lm	2,6%
90-120°	2 lm	0,0%
0-90°	13774 lm	99,9%
90-180°	18 lm	0,1%
0-180°	13792 lm	100,0%

### BUG rating

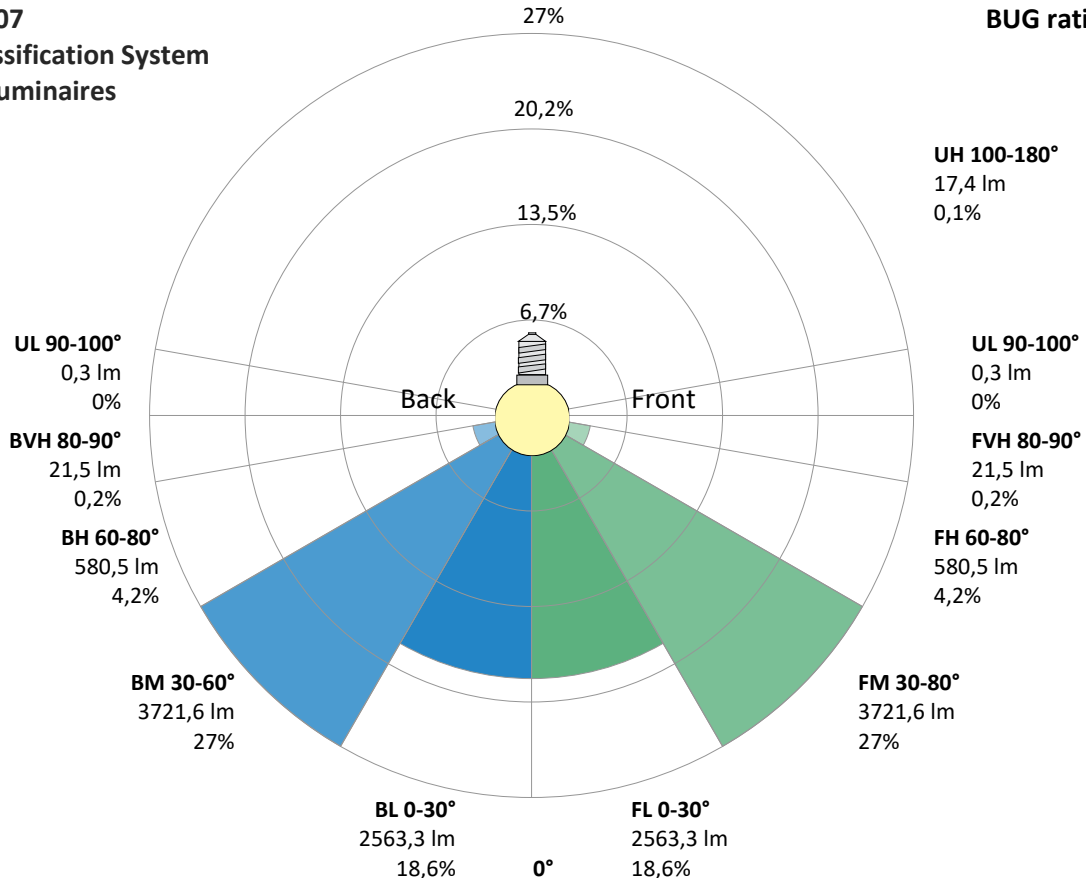
	Lumen	% Total
<b>Forward light</b>		
Low(0-30°)	2563 lm	18,6%
Medium(30-60°)	3722 lm	27,0%
High(60-80°)	581 lm	4,2%
Very high(80-90°)	21 lm	0,2%
<b>Back light</b>		
Low(0-30°)	2563 lm	18,6%
Medium(30-60°)	3722 lm	27,0%
High(60-80°)	581 lm	4,2%
Very high(80-90°)	21 lm	0,2%

### Uplight

Low(90-100°)	0 lm	0,0%
High(100-180°)	17 lm	0,1%

## IESNA TM-15-07 Luminaire Classification System For Outdoor Luminaires

**BUG rating B4 U2 G1**



# Light Measurement Report

Print date: 30-4-2025

Measurement date and time: 30-4-2025 08:51:45 – Measurement no. VFR-250430-0985-MS

Measurement tracking No. and Link: [VT250430-002104](#)

Operator:

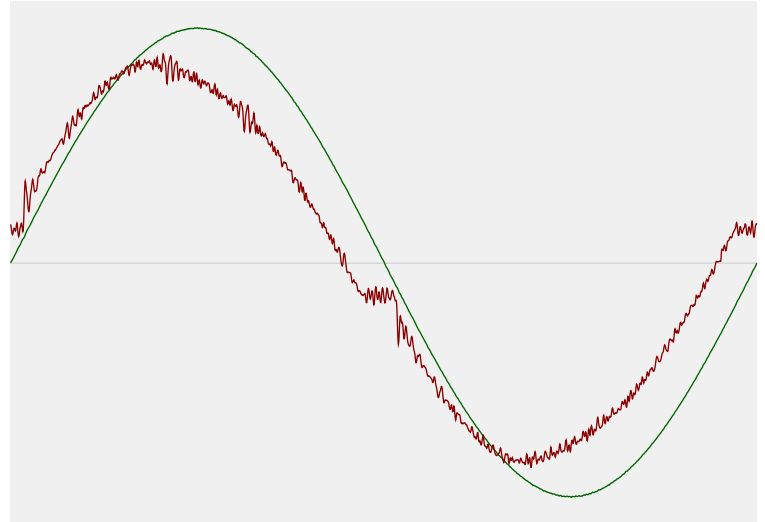


## Power Details

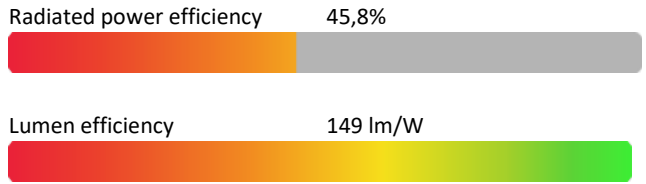
### Input Power

Power feed to light source	92,7 W
Frequency of input power	50 Hz
RMS Input voltage feed, $V_{RMS}$	230 V
RMS Input current feed, $I_{RMS}$	0,421 A
Volt-Ampere or apparent power = $V_{RMS} * I_{RMS}$	96,87 VA
Displacement factor of AC power feed	0,96
Power factor of AC current feed	0,96
Total harmonic distortion of the current	6,36%
Total harmonic distortion of the voltage	0,06%

### Input Power Curve



### Efficiency



## Stabilization Details

### Warmup Conditions

Stable period	15 min
Stable change max	2,0%
Minimum time	15 min

### Color Temperature Change

CCT start	5967 K
CCT shift	+33 K
CCT end	6000 K

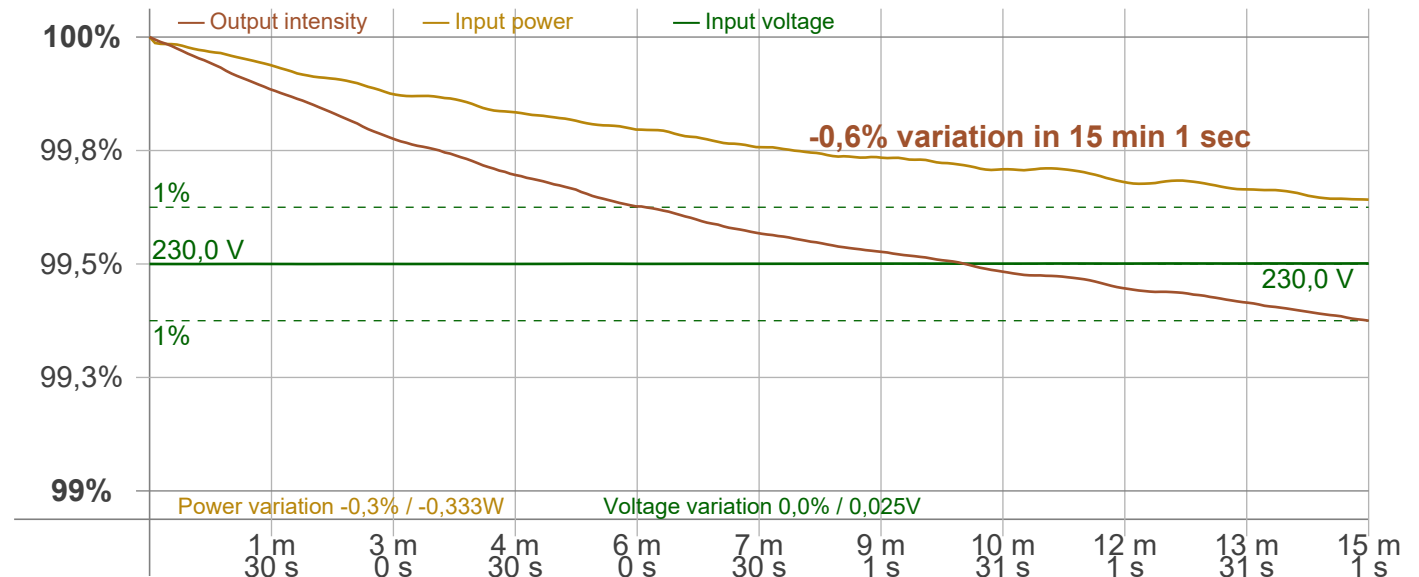
### Warmup Result

Total warmup time	Lamp stabilized in 15 min 1 sec
Warmup variation	-0,6%

### Output Change

Output start	13879 lm
Output change	-87 lm
Output end	13792 lm

### Stabilization Curve



# Light Measurement Report

Print date: 30-4-2025

Measurement date and time: 30-4-2025 08:51:45 – Measurement no. VFR-250430-0985-MS

Measurement tracking No. and Link: [VT250430-002104](#)

Operator:



## Flicker /TLA details

Flicker Meter Type Viso Systems LabFlicker  
 Frequency of input power 50 Hz  
 Flicker/TLA sample rate 20000 samples/s

**Measurement time**  
 PstLM 180 sec  
 All other indices 1,2 sec

### Flicker indices according to Illuminating Engineering Society (IES)

Flicker frequency 99,01 Hz  
 Percent Flicker 0,21 %  
 Flicker index 0

### Flicker indices according to California Energy Commission (CEC) 2016b

JA8/10 40 Hz 0,03 %  
 JA8/10 90 Hz 0,04 %  
 JA8/10 200 Hz 0,19 %  
 JA8/10 400 Hz 0,2 %  
 JA8/10 1000 Hz 0,21 %

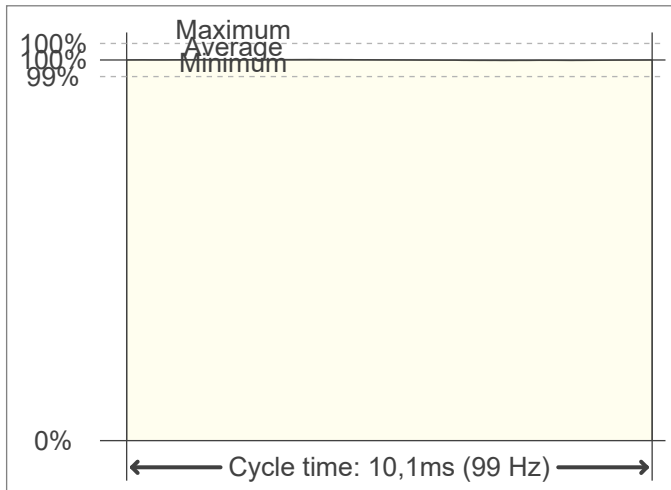
### TLA indices (re IEC TR 61547-1, IEC 61000-3-3 and IEC 61000-4-15)

PstLM value (F < 80 Hz) 0,02  
 SVM value (80 < F < 2000 Hz) 0,01

### Flicker indices according to Lighting Research Center (2015)

Perception metric, Assist Mp 0,01

### Flicker frame (frame of one flicker period in time domain)



### Flicker FFT (flicker curve in frequency domain)



### IEEE 1789 Frequency/modulation plot

