

Light efficiency:



Light quality:



Color temperature:



Output: 10906 lm

Peak: 4352 cd

Power: 63,9 W

PF: 0,97



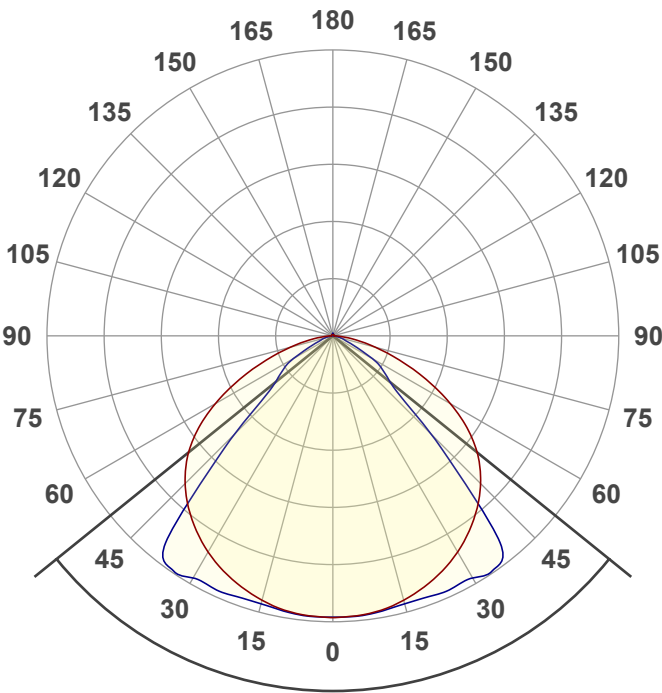
Tracking number: [VT241008-004930](#)

Product name:  
**802349-5700K**

Item number:  
**802349-5700K**

Date and time:  
**8-10-2024 09:38:56**

Description:  
**LICHTLIJN JUPITER | LED MODULE |  
MET NOOD | 33W/42W/58W/66W | 90° |  
CCT SWITCH**

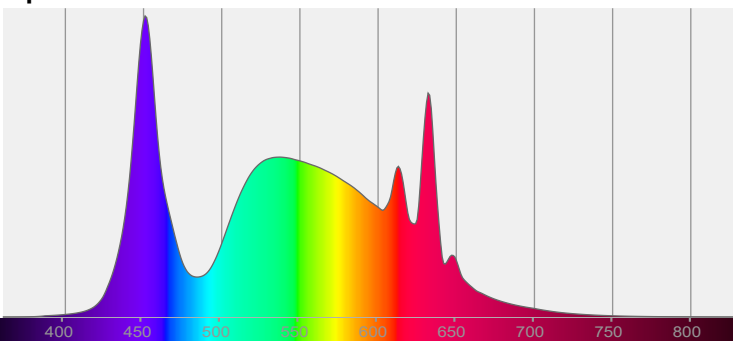


Beam angle **102,1°**

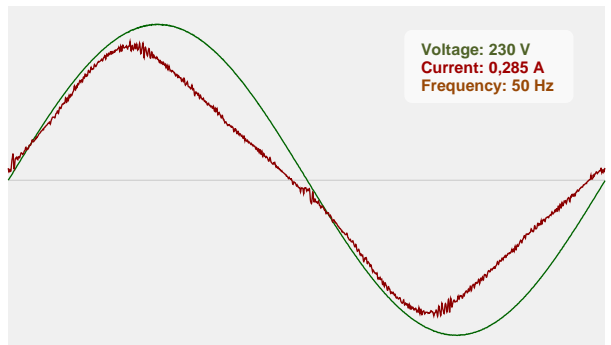


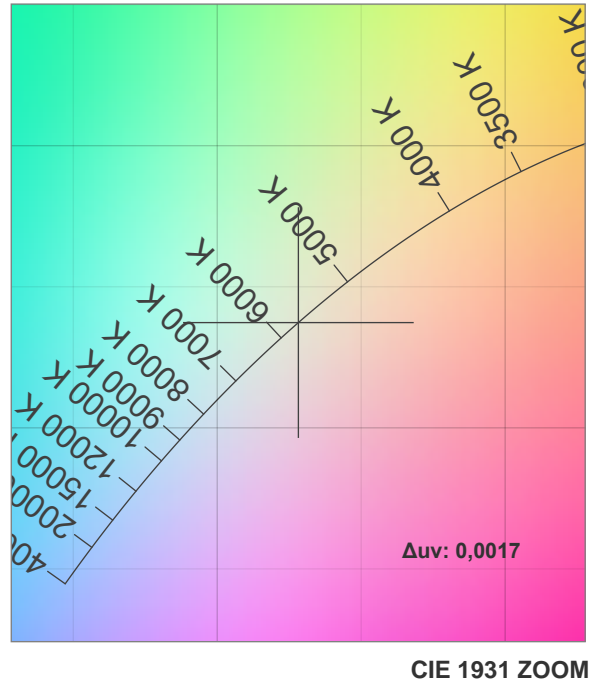
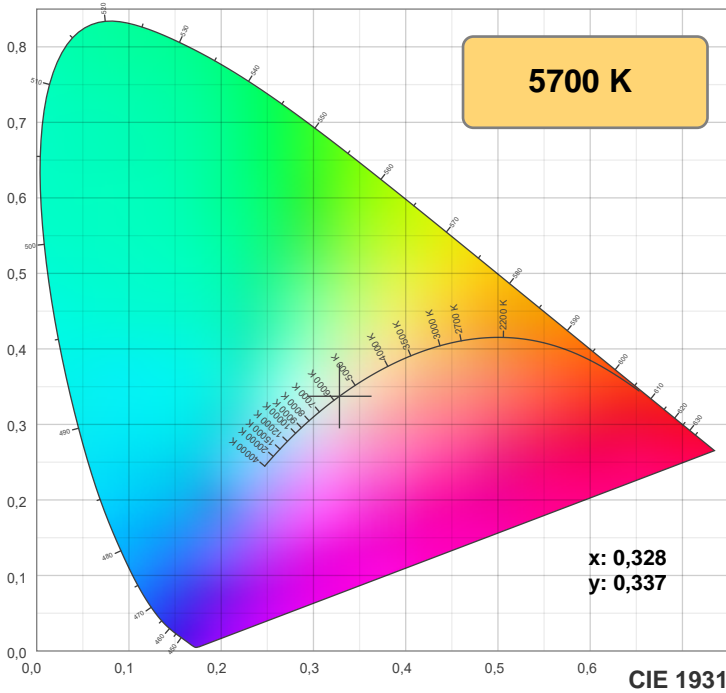
CIE 1931  
x: 0,328  
y: 0,337

Spectra



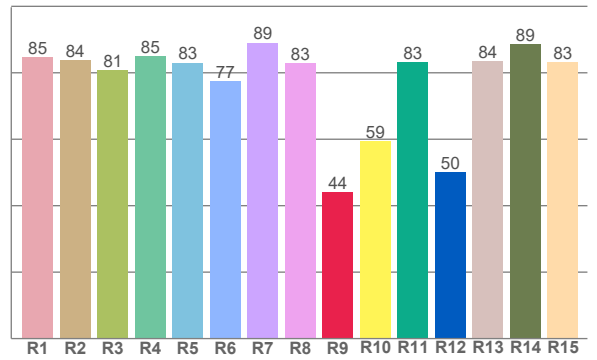
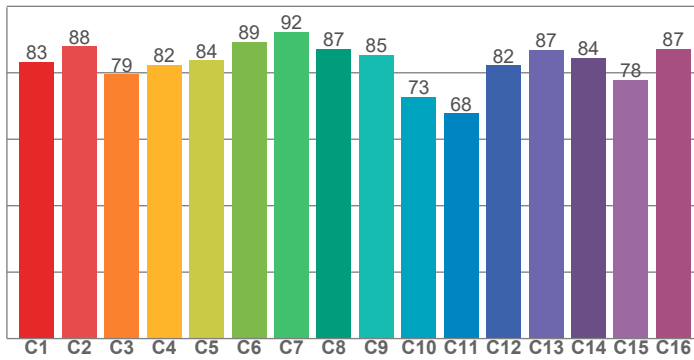
Power





**TM-30: 82,7**

**CRI: 83,3 (R1-R8)**



**CRI R values, only R1-R8 are used to calculate final CRI value**

R1	R2	R3	R4	R5	R6	R7	R8	R9	R10	R11	R12	R13	R14	R15
84,6	83,9	80,7	85,0	83,0	77,4	89,1	82,9	44,1	59,4	83,2	50,0	83,6	88,7	83,2

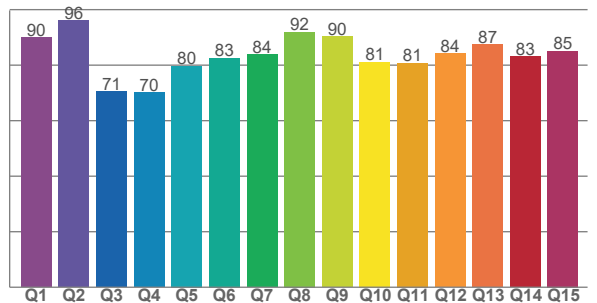
**TM30 C values, 16 binned values out of total of 99 C values**

C1	C2	C3	C4	C5	C6	C7	C8	C9	C10	C11	C12	C13	C14	C15	C16
83,4	88,0	79,5	82,5	83,8	89,4	92,3	87,2	85,4	72,8	67,8	82,3	86,9	84,5	77,9	87,3

**CQS Q values**

Q1	Q2	Q3	Q4	Q5	Q6	Q7	Q8	Q9	Q10	Q11	Q12	Q13	Q14	Q15
90,0	96,1	70,6	70,1	79,8	82,6	83,9	92,0	90,3	81,2	80,8	84,3	87,5	83,1	85,1

**CQS: 82,4**



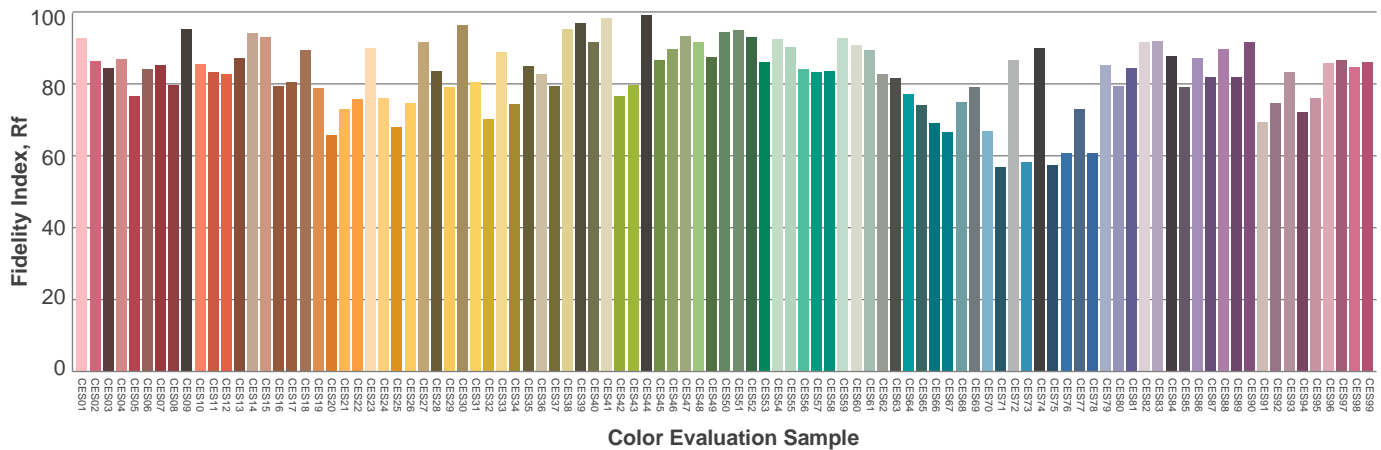
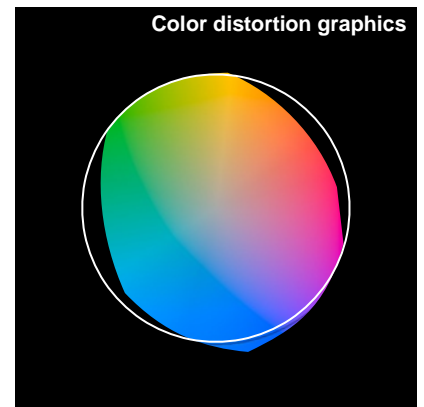
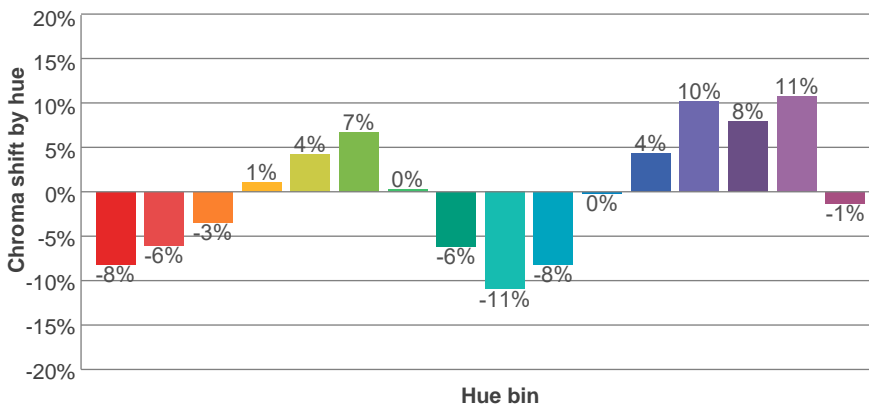
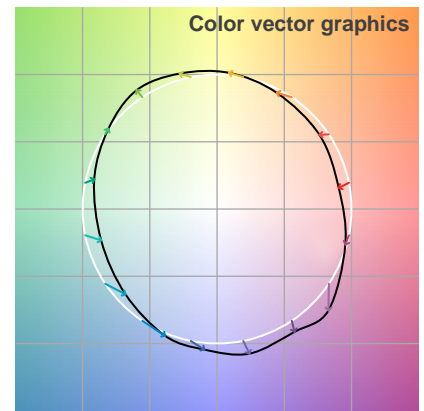
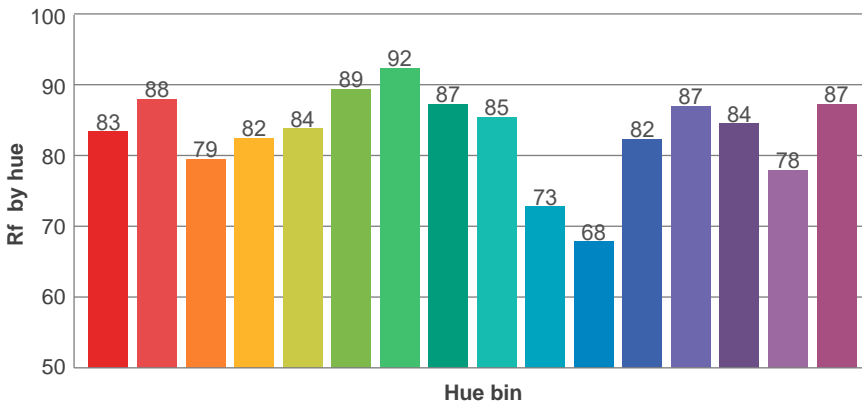
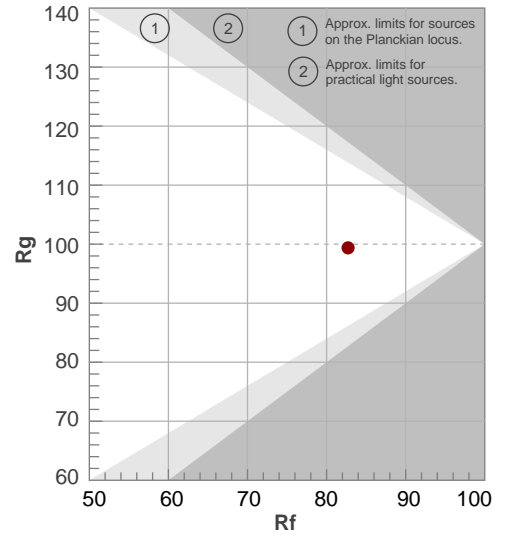
**Color parameters**

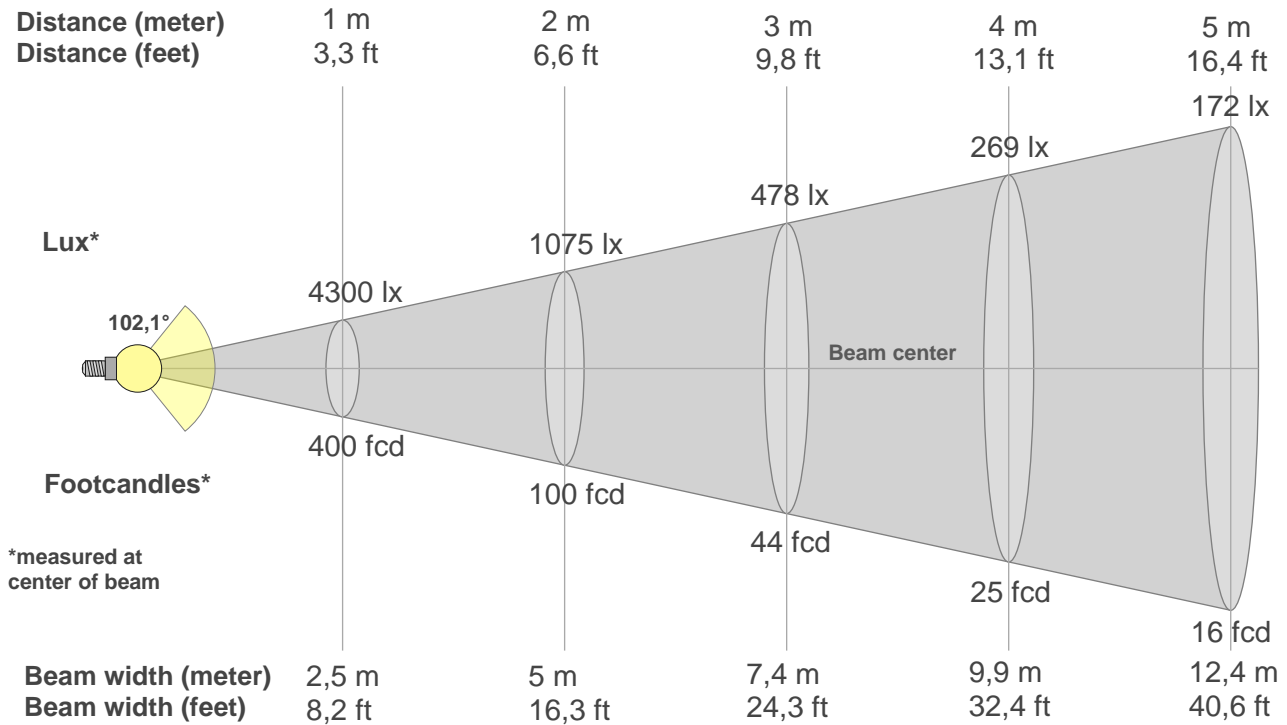
Color temperature	Color rendering index	Red component	Color fidelity	Color gamut	Color quality scale	Color coordinate cie 1931	Color coordinate cie 1931	Color coordinate	Color coordinate	Color diviation from black body
CCT	CRI	CRI R9	TM30 Rf	TM30 Rg	CQS	x	y	u	v	Δuv
5700 K	83,3	44,1	82,7	99,4	82,4	0,328	0,337	0,205	0,317	0,0017

**Rf 82,7**  
Fidelity index Rf

**Rg 99,4**  
Gamut index Rg

Hue Bin	R <sub>f</sub>	Shifts (%)	
		Chroma	Hue
1	83	-8%	-2%
2	88	-6%	3%
3	79	-3%	11%
4	82	1%	11%
5	84	4%	8%
6	89	7%	1%
7	92	0%	-5%
8	87	-6%	-4%
9	85	-11%	6%
10	73	-8%	15%
11	68	0%	20%
12	82	4%	11%
13	87	10%	3%
14	84	8%	-3%
15	78	11%	-17%
16	87	-1%	-7%





**Beam intensities from 1-20m**

1m	2m	3m	4m	5m	6m	7m	8m	9m	10m	11m	12m	13m	14m	15m	16m	17m	18m	19m	20m
3,3ft	6,6ft	9,8ft	13,1ft	16,4ft	19,7ft	23ft	26,2ft	29,5ft	32,8ft	36,1ft	39,4ft	42,7ft	45,9ft	49,2ft	52,5ft	55,8ft	59,1ft	62,3ft	65,6ft
4300lx	1075lx	478lx	269lx	172lx	119lx	88lx	67lx	53lx	43lx	36lx	30lx	25lx	22lx	19lx	17lx	15lx	13lx	12lx	11lx
399,5fc	99,9fcd	44,4fcd	25fcd	16fcd	11,1fcd	8,2fcd	6,2fcd	4,9fcd	4fcd	3,3fcd	2,8fcd	2,4fcd	2fcd	1,8fcd	1,6fcd	1,4fcd	1,2fcd	1,1fcd	1fcd

**Intensities in 0° c-plane**

0°	5°	10°	15°	20°	25°	30°	35°	40°	45°	50°	55°	60°	65°	70°	75°	80°	85°	90°	95°
4300	4286	4249	4175	4076	3955	3807	3629	3425	3184	2895	2523	2069	1571	1089	681	369	149	40	16
100%	100%	99%	97%	95%	92%	89%	84%	80%	74%	67%	59%	48%	37%	25%	16%	9%	3%	1%	0%

**Intensities in 90° c-plane**

0°	5°	10°	15°	20°	25°	30°	35°	40°	45°	50°	55°	60°	65°	70°	75°	80°	85°	90°	95°
4300	4292	4268	4238	4242	4263	4269	4280	3712	2166	1230	947	700	376	202	132	63	24	11	11
100%	100%	99%	99%	99%	99%	99%	100%	86%	50%	29%	22%	16%	9%	5%	3%	1%	1%	0%	0%

**Intensities in 180° c-plane**

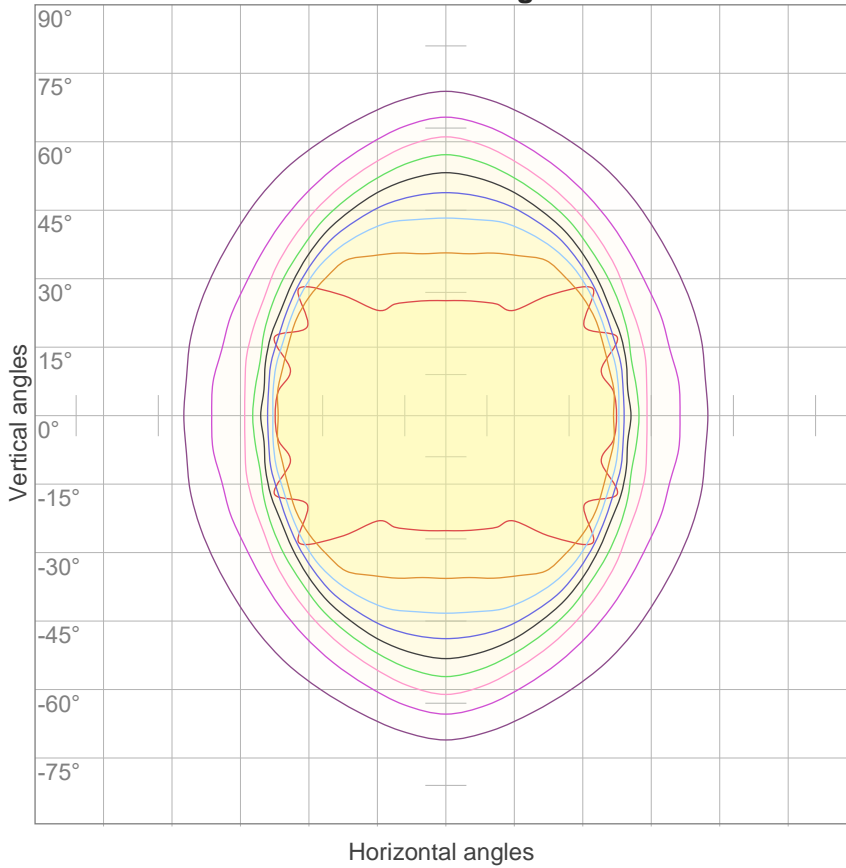
0°	5°	10°	15°	20°	25°	30°	35°	40°	45°	50°	55°	60°	65°	70°	75°	80°	85°	90°	95°
4300	4286	4249	4175	4076	3955	3807	3629	3425	3184	2895	2523	2069	1571	1089	681	369	149	40	16
100%	100%	99%	97%	95%	92%	89%	84%	80%	74%	67%	59%	48%	37%	25%	16%	9%	3%	1%	0%

**Intensities in 270° c-plane**

0°	5°	10°	15°	20°	25°	30°	35°	40°	45°	50°	55°	60°	65°	70°	75°	80°	85°	90°	95°
4300	4292	4268	4238	4242	4263	4269	4280	3712	2166	1230	947	700	376	202	132	63	24	11	11
100%	100%	99%	99%	99%	99%	99%	100%	86%	50%	29%	22%	16%	9%	5%	3%	1%	1%	0%	0%

Beam angle 50%	Field angle 10%	Cutoff angle 2,5%	Intensity ratio in 120° cone	Intensity ratio in 90° cone
<b>102,1°</b>	<b>139,6°</b>	<b>160,8°</b>	<b>88,7%</b>	<b>66,2%</b>

**iso-candela diagram**



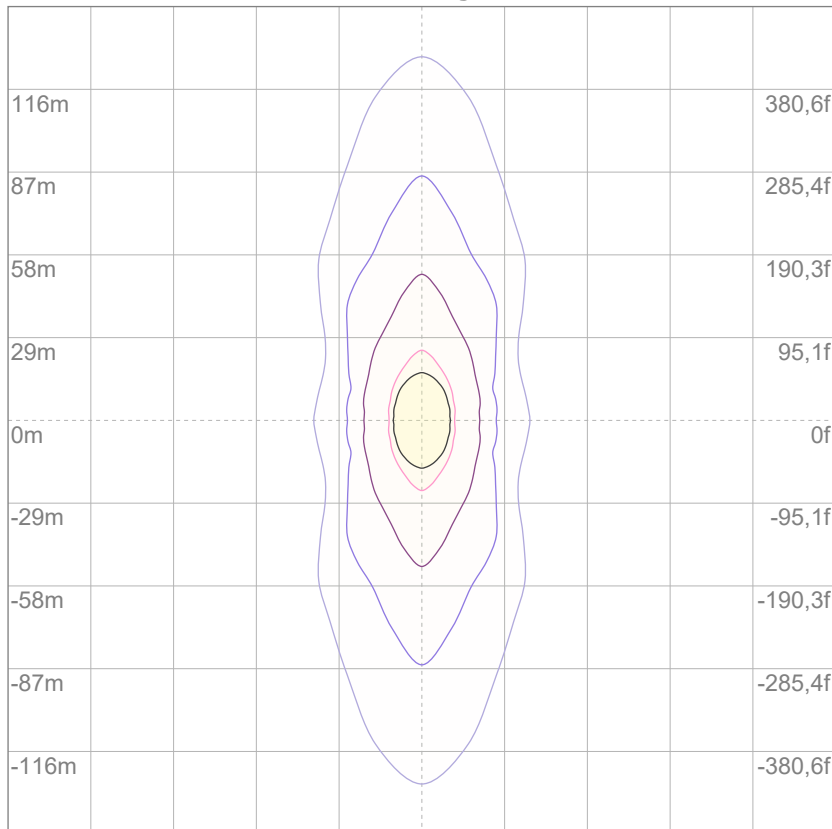
10%	430 cd
20%	860 cd
30%	1290 cd
40%	1720 cd
50%	2150 cd
60%	2580 cd
70%	3010 cd
80%	3440 cd
90%	3870 cd

Conditions:

Number of c-planes: 44

Candela at center: 4300 cd

**iso-lux diagram**



3%	1,29 lx
5%	2,15 lx
10%	4,30 lx
30%	12,9 lx
50%	21,5 lx

Conditions:

Number of c-planes: 44

Lux at center: 43,0 lx

*Lux distribution on a surface when lamp is mounted at 10 meters from the surface.*

Mounting height: 10 meters (33 feet)

Glare evaluation according to UGR

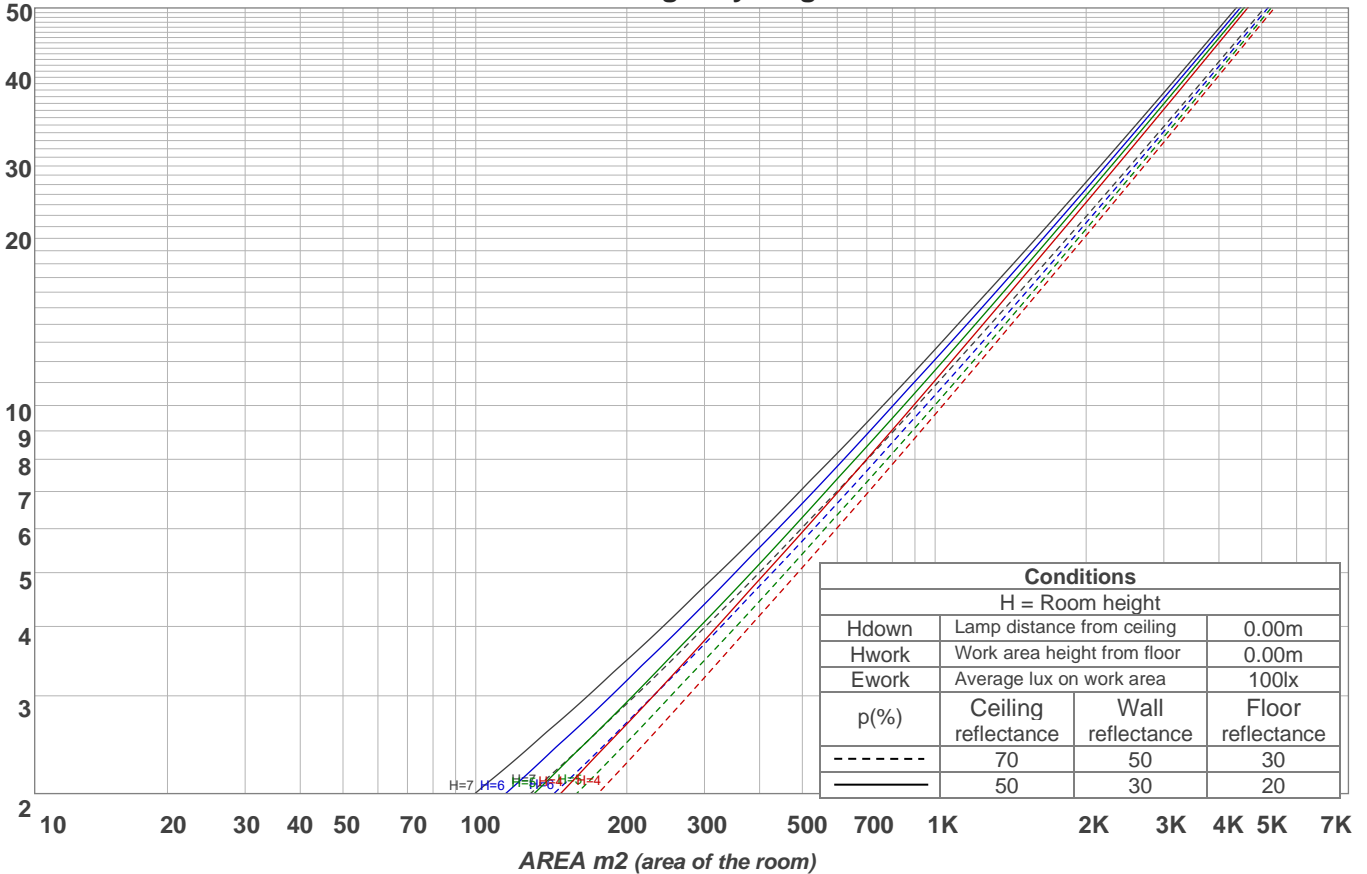
p Ceiling	70	70	50	50	30	70	70	50	50	30	
p Walls	50	30	50	30	30	50	30	50	30	30	
p Floor	20	20	20	20	20	20	20	20	20	20	
Room size X Y	Viewing direction at right angles to lamp axis					Viewing direction parallel to lamp axis					
2H	2H	27,5	28,6	27,7	28,9	29,1	23,5	24,6	23,8	24,9	25,1
	3H	28,4	29,6	28,9	29,8	30,1	23,5	24,6	23,9	24,9	25,1
	4H	28,8	29,9	29,2	30,2	30,4	23,5	24,5	23,9	24,8	25,1
	6H	29,2	30,1	29,5	30,4	30,8	23,5	24,4	23,8	24,7	25,1
	8H	29,2	30,1	29,6	30,4	30,9	23,4	24,3	23,8	24,6	25,1
	12H	29,3	30,1	29,6	30,5	30,9	23,4	24,2	23,8	24,6	25,1
4H	2H	27,3	28,4	27,7	28,7	28,9	23,8	24,9	24,2	25,2	25,4
	3H	28,5	29,4	28,9	29,7	30,2	24,0	24,8	24,4	25,2	25,6
	4H	28,9	29,7	29,3	30,1	30,7	23,9	24,7	24,4	25,1	25,7
	6H	29,2	30,0	29,7	30,3	30,7	23,9	24,6	24,4	25,0	25,4
	8H	29,3	30,0	29,8	30,4	30,8	23,8	24,5	24,4	24,9	25,3
	12H	29,4	30,0	29,9	30,4	30,9	23,8	24,4	24,3	24,8	25,3
8H	4H	28,8	29,5	29,3	29,9	30,3	24,0	24,7	24,5	25,0	25,4
	6H	29,2	29,7	29,7	30,2	30,7	24,0	24,5	24,5	25,0	25,5
	8H	29,4	29,8	29,9	30,3	31,0	24,0	24,4	24,5	25,0	25,6
	12H	29,4	29,8	30,0	30,3	31,0	24,0	24,3	24,6	24,8	25,5
12H	4H	28,8	29,3	29,3	29,8	30,2	24,0	24,5	24,5	25,0	25,5
	6H	29,2	29,6	29,7	30,1	30,8	24,0	24,4	24,5	25,0	25,6
	8H	29,3	29,7	29,9	30,2	30,8	24,0	24,4	24,6	24,9	25,5
Variation of the observer position for the luminaire distance S											
S = 1.0H	0,1 / -0,2					1,2 / -2,1					
S = 1.5H	0,8 / -1,4					2,6 / -3,1					
S = 2.0H	1,8 / -2,6					4,1 / -5,3					
CIE 117-1995. Corrected glare indices referring to 10906 lm total luminous flux											

## Coefficients of Utilization

Ceiling reflectance	80				70				50			30			10			0
	70	50	30	10	70	50	30	10	50	30	10	50	30	10	50	30	10	0
Wall reflectance	70	50	30	10	70	50	30	10	50	30	10	50	30	10	50	30	10	0
Floor reflectance	20	20	20	20	20	20	20	20	20	20	20	20	20	20	20	20	20	0
<b>RCR</b>	<b>(RCR: Room Cavity Ratio)</b>																	
	Room Values are expressed as percentage of Lumens delivered to the task surface																	
0	119	119	119	119	116	116	116	116	111	111	111	106	106	106	101	101	101	99
1	110	106	103	99	108	104	101	98	100	97	95	96	93	91	92	90	89	87
2	102	95	89	84	99	93	87	83	89	84	81	86	82	79	83	79	77	75
3	94	84	77	71	91	83	76	71	80	74	69	77	72	68	74	70	67	65
4	86	75	68	62	84	74	67	61	72	65	60	69	64	59	67	62	58	56
5	80	68	60	54	78	67	59	53	65	58	53	63	57	52	61	56	51	49
6	74	62	53	47	72	61	53	47	59	52	47	57	51	46	55	50	46	44
7	69	56	48	42	67	55	47	42	54	47	41	52	46	41	51	45	41	39
8	64	51	43	38	62	50	43	37	49	42	37	48	42	37	47	41	37	35
9	60	47	39	34	58	46	39	34	45	38	34	44	38	33	43	37	33	31
10	56	43	36	31	55	43	36	31	42	35	31	41	35	30	40	34	30	29

LAMPS (number of lamps)

## Luminaire budgetary diagram



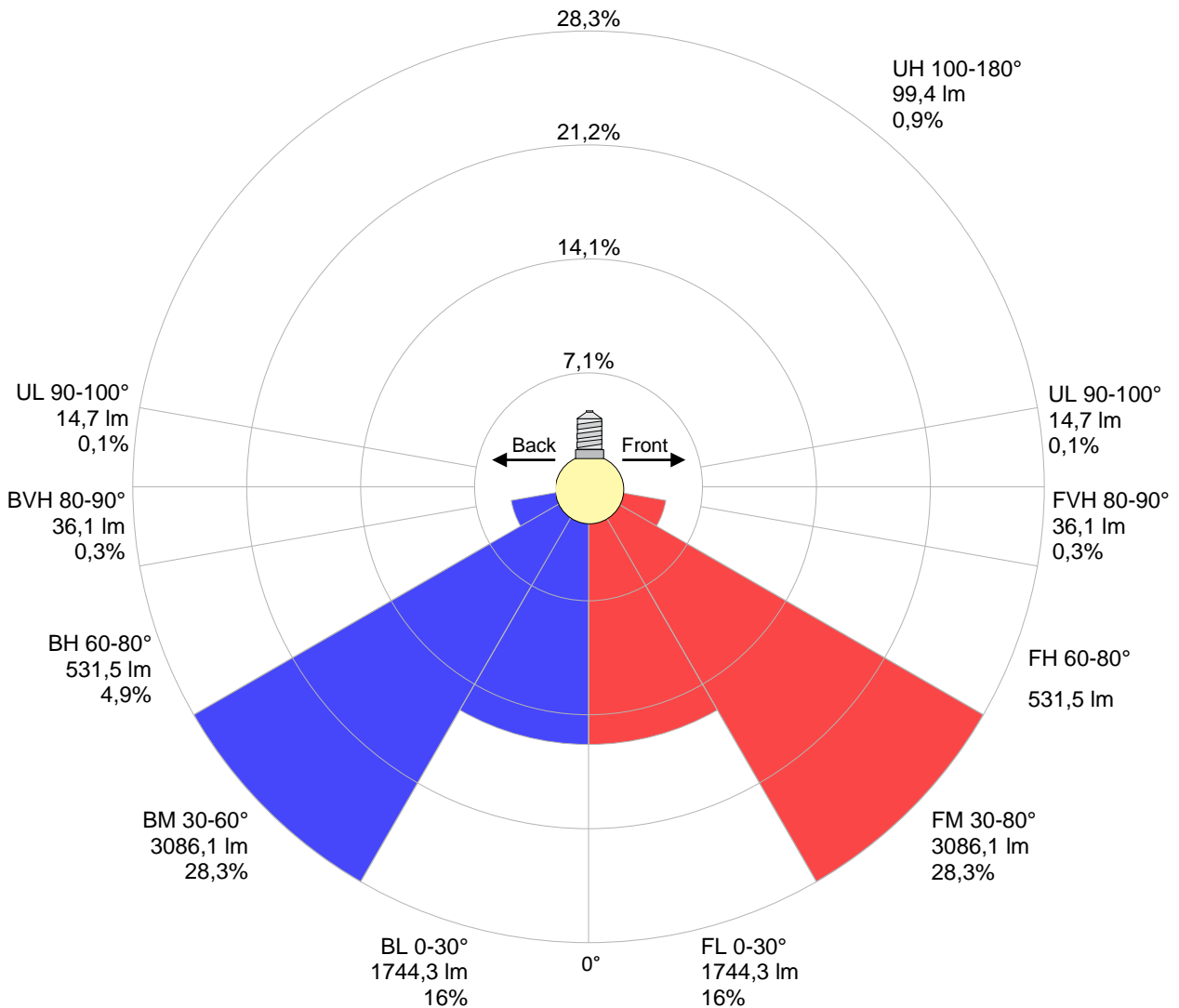
## Zonal Lumen Summary

0°-10°	10°-20°	20°-30°	30°-40°	40°-50°	50°-60°	60°-70°	70°-80°	80°-90°
{LUM0-10}	1191 lm	1892 lm	2475 lm	2275 lm	1432 lm	751 lm	300 lm	68,7 lm
90°-100°	100°-110°	110°-120°	120°-130°	130°-140°	140°-150°	150°-160°	160°-170°	170°-180°
14,1 lm	15,7 lm	16,5 lm	16,6 lm	15,5 lm	13,9 lm	11,1 lm	7,39 lm	2,61 lm

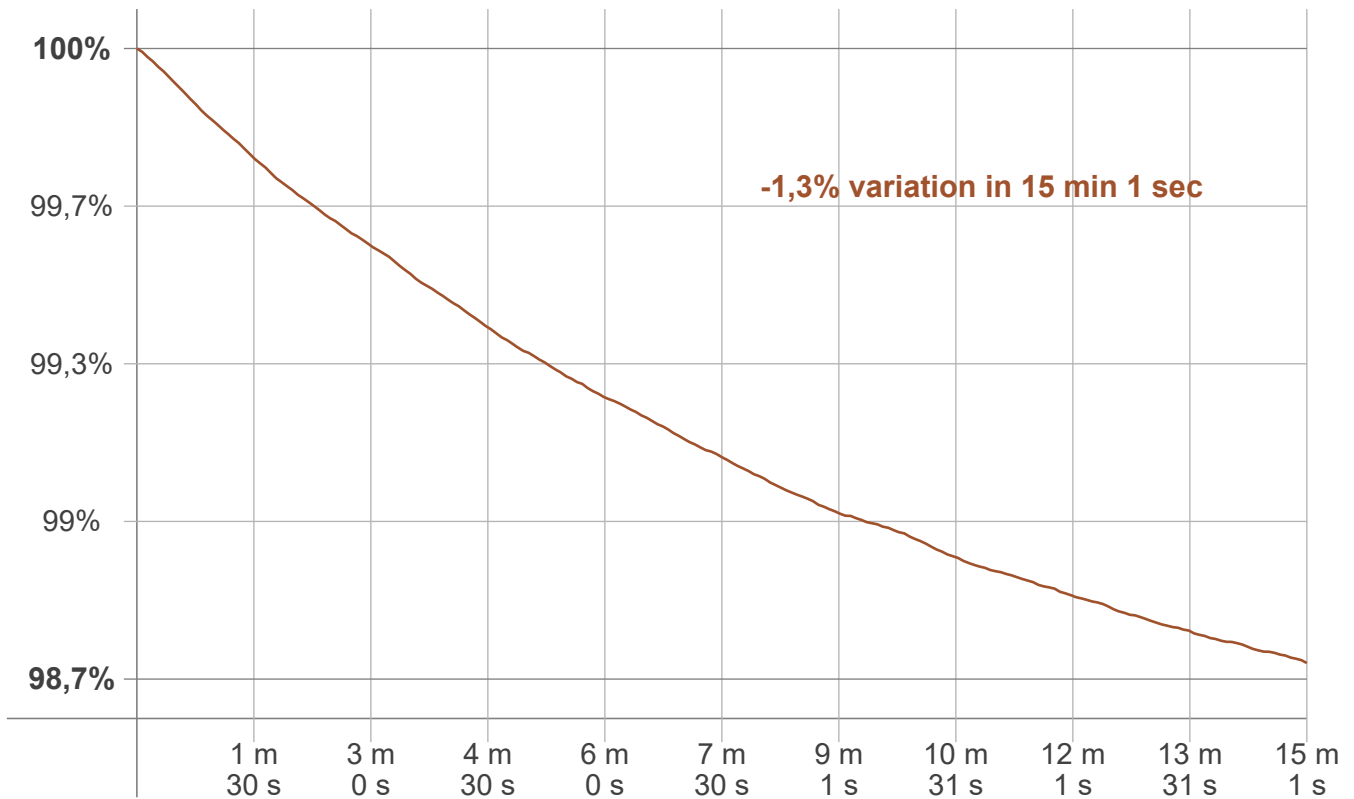
LCS table

BUG rating:	B3 U3 G1	
<b>Forward light</b>	Lumens	Lumens %
Low(0-30):	1744,3	16%
Medium(30-60):	3086,1	28,3%
High(60-80):	531,5	4,9%
Very high(80-90):	36,1	0,3%
<b>Back light</b>		
Low(0-30):	1744,3	16%
Medium(30-60):	3086,1	28,3%
High(60-80):	531,5	4,9%
Very high(80-90):	36,1	0,3%
<b>Uplight</b>		
Low(90-100):	14,7	0,1%
High(100-180):	99,4	0,9%

LCS graph



**Warmup curve**



**Warmup result**

Warmup time:	Lamp stabilized in 15 min 1 sec
Warmup variation	-1,3%

**Warmup conditions**

Stable period:	15 min
Stable change max:	2,0%
Minimum time:	15 min

**Color temperature change**

CCT start	CCT change	CCT end
5709 K	-9 K	5700 K

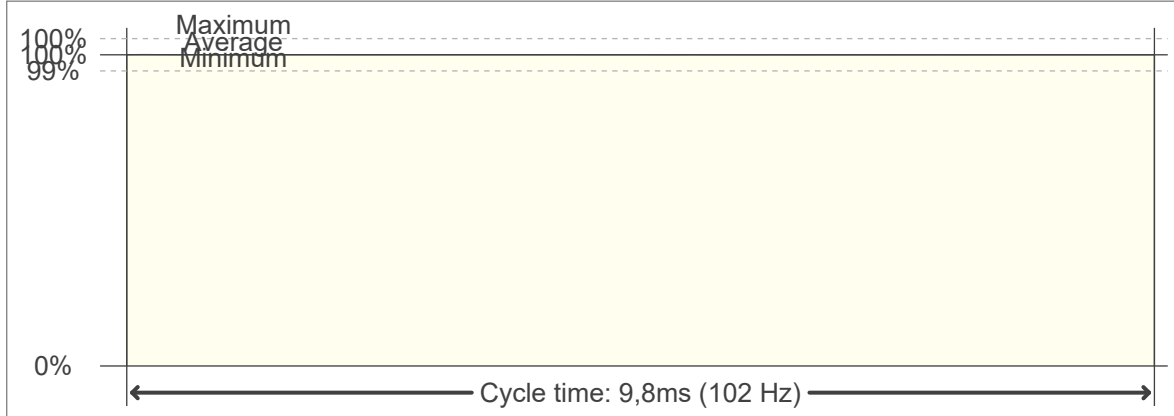
**Output change**

Output start	Output change	Output end
11049 lm	-143 lm	10906 lm

**Flicker curve (complete sampled flicker signal)**



**Flicker frame (frame of one flicker period)**



**Flicker FFT (frequency scope of flicker curve)**



**Flicker results:**

Flicker frequency:		102,04 Hz	
Flicker index:	0	JA8/10 40Hz	0,02 %
Flicker percentage:	0,07 %	JA8/10 90Hz	0,02 %
SVM: (Visual flicker)	0	JA8/10 200Hz	0,05 %
PstLM	0,01	JA8/10 400Hz	0,05 %
Mp	0,01	JA8/10 1000Hz	0,06 %

**Flicker conditions:**

Sample rate:	20000 samples/second
--------------	----------------------