

Light efficiency:



Light quality:



Color temperature:



Output: 10822 lm

Peak: 4341 cd

Power: 63,5 W

PF: 0,97



Tracking number: [VT241008-009719](#)

Product name:

802349-4000K

Item number:

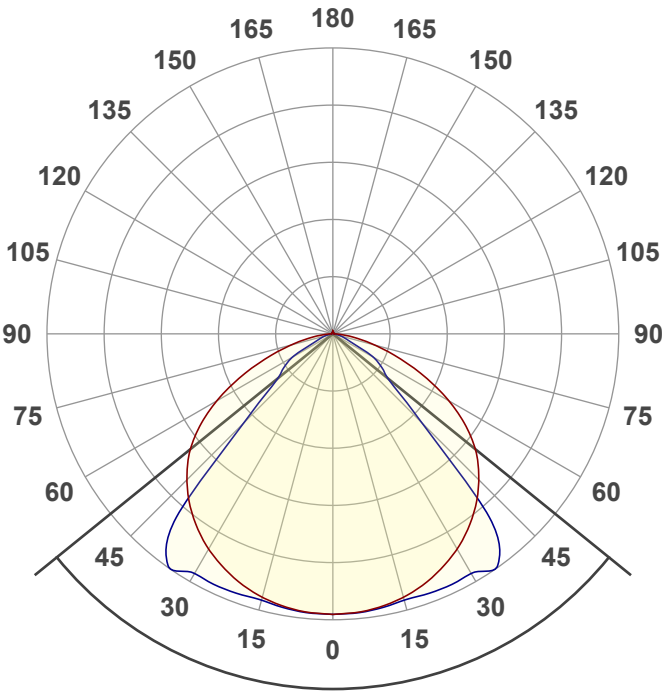
802349-4000K

Date and time:

8-10-2024 10:14:51

Description:

**LICHTLIJN JUPITER | LED MODULE |
MET NOOD | 33W/42W/58W/66W | 90° |
CCT SWITCH**

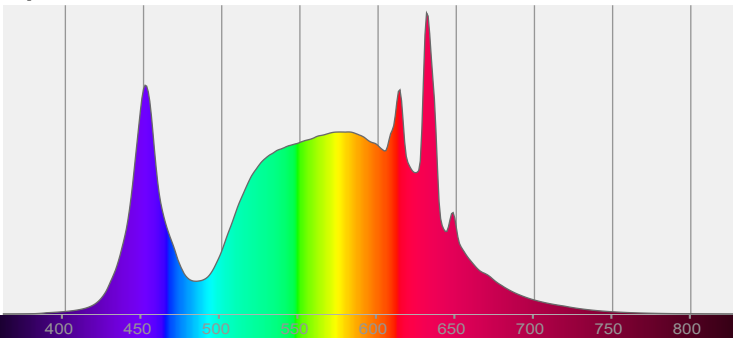


Beam angle **102°**

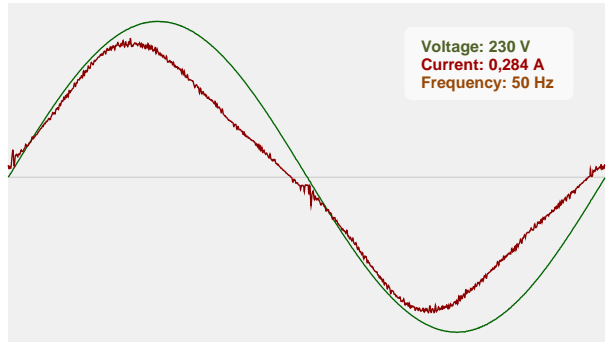


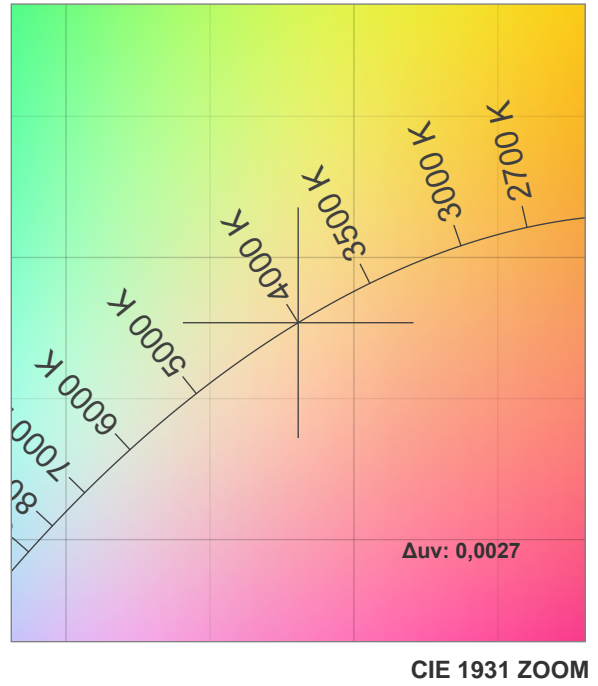
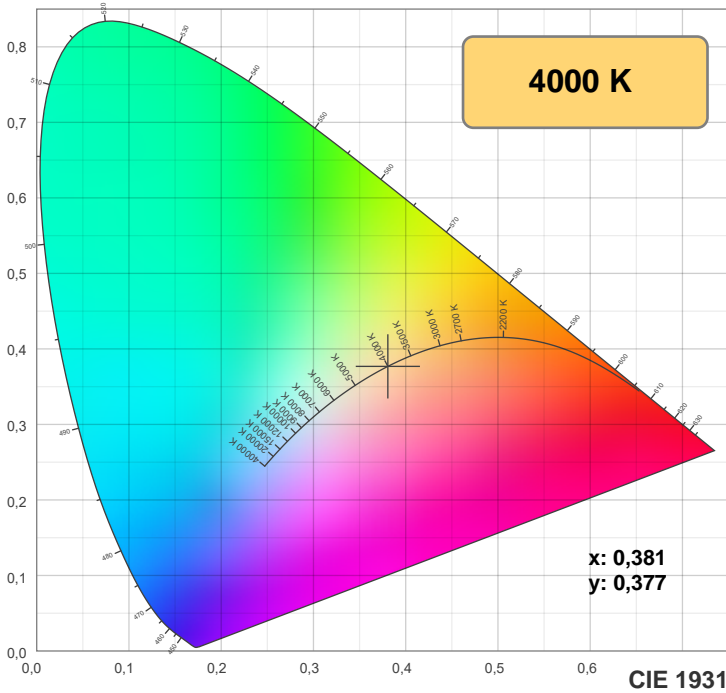
CIE 1931
x: 0,381
y: 0,377

Spectra



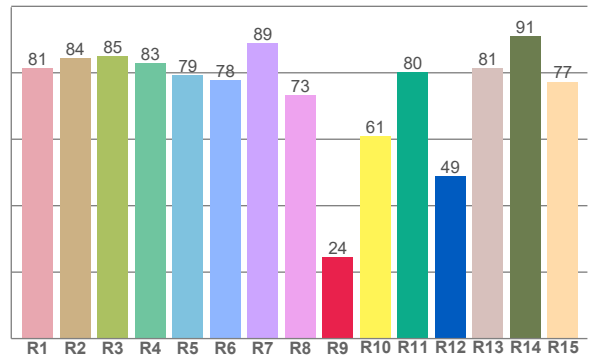
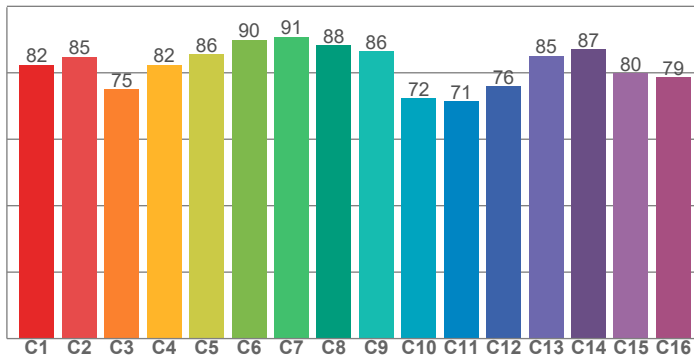
Power



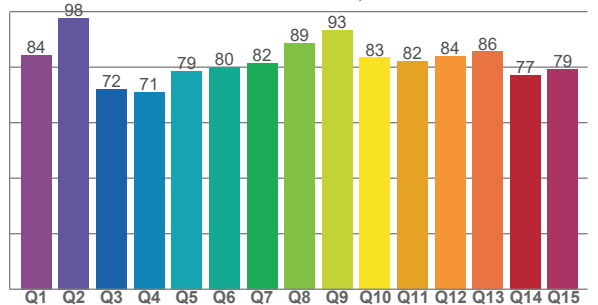


TM-30: 81,9

CRI: 81,6 (R1-R8)



CQS: 81,3



CRI R values, only R1-R8 are used to calculate final CRI value

R1	R2	R3	R4	R5	R6	R7	R8	R9	R10	R11	R12	R13	R14	R15
81,4	84,4	85,1	82,9	79,4	77,7	88,9	73,2	24,4	60,9	80,2	48,9	81,4	90,9	77,3

TM30 C values, 16 binned values out of total of 99 C values

C1	C2	C3	C4	C5	C6	C7	C8	C9	C10	C11	C12	C13	C14	C15	C16
82,4	84,9	75,0	82,5	85,6	89,9	90,8	88,3	86,4	72,4	71,4	75,9	85,1	87,0	79,8	78,7

CQS Q values

Q1	Q2	Q3	Q4	Q5	Q6	Q7	Q8	Q9	Q10	Q11	Q12	Q13	Q14	Q15
84,3	97,7	72,1	71,1	78,6	80,0	81,6	88,6	93,4	83,5	82,2	84,0	85,7	77,2	79,3

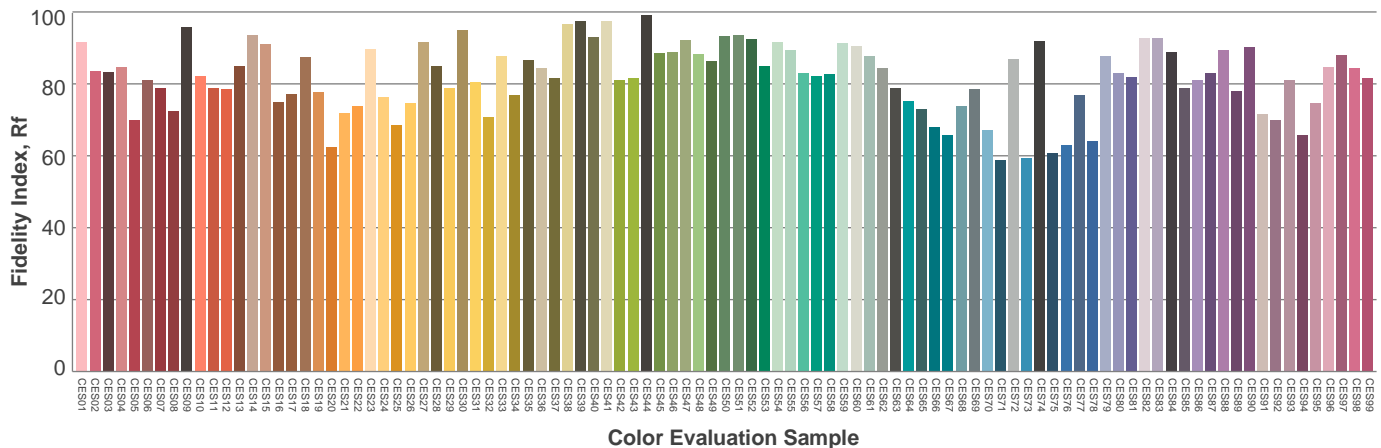
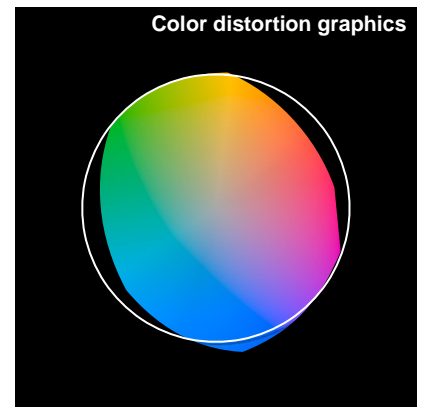
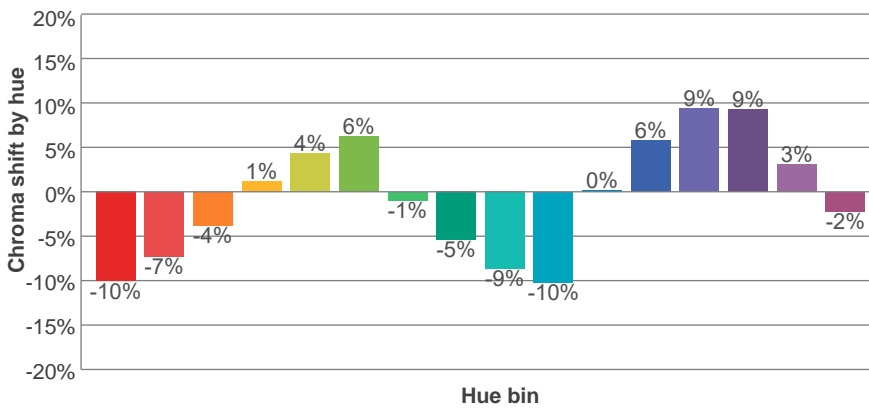
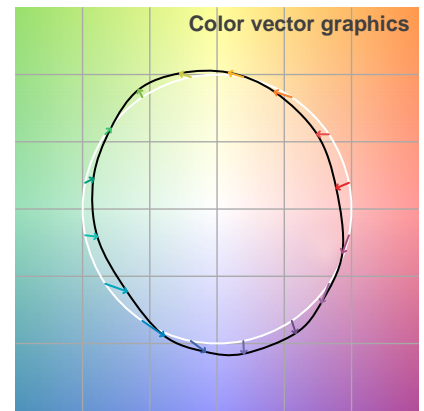
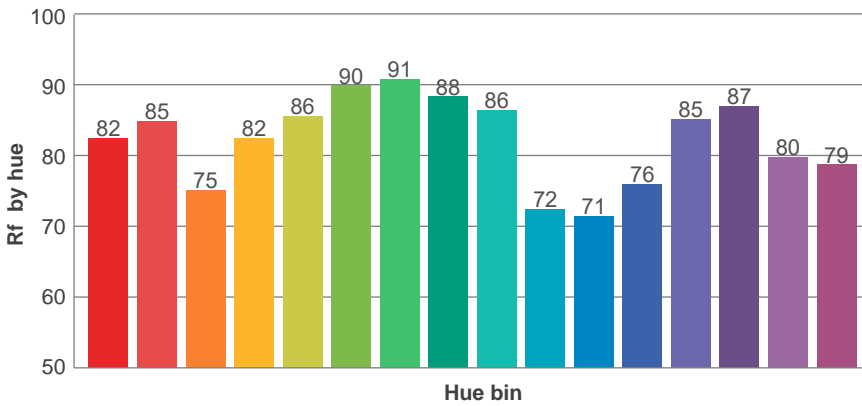
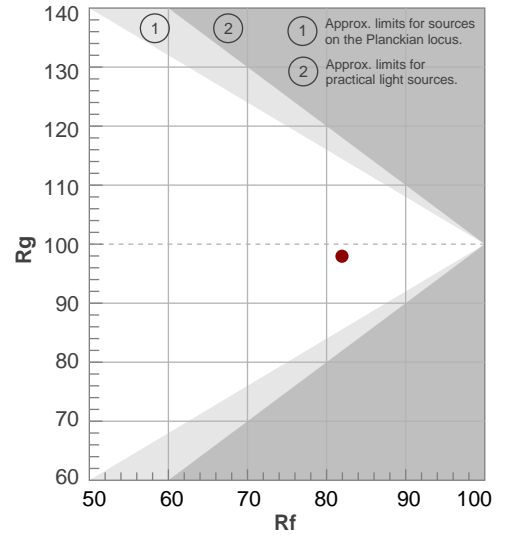
Color parameters

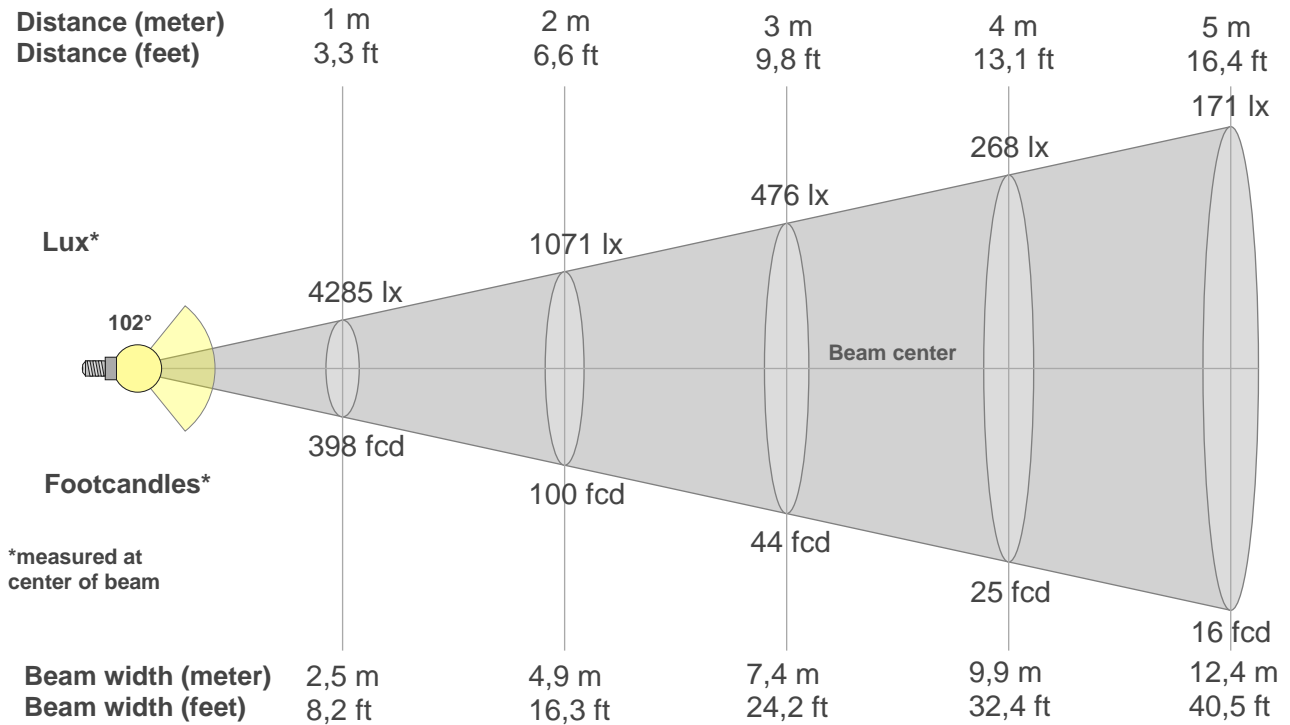
Color temperature	Color rendering index	Red component	Color fidelity	Color gamut	Color quality scale	Color coordinate cie 1931	Color coordinate cie 1931	Color coordinate	Color coordinate	Color deviation from black body
CCT	CRI	CRI R9	TM30 Rf	TM30 Rg	CQS	x	y	u	v	Δuv
4000 K	81,6	24,4	81,9	98,0	81,3	0,381	0,377	0,225	0,334	0,0027

Rf 81,9
Fidelity index Rf

Rg 98,0
Gamut index Rg

Hue Bin	R _f	Shifts (%)	
		Chroma	Hue
1	82	-10%	-2%
2	85	-7%	5%
3	75	-4%	13%
4	82	1%	11%
5	86	4%	7%
6	90	6%	-1%
7	91	-1%	-6%
8	88	-5%	-4%
9	86	-9%	3%
10	72	-10%	14%
11	71	0%	19%
12	76	6%	12%
13	85	9%	-1%
14	87	9%	-3%
15	80	3%	-15%
16	79	-2%	-14%





Beam intensities from 1-20m

1m	2m	3m	4m	5m	6m	7m	8m	9m	10m	11m	12m	13m	14m	15m	16m	17m	18m	19m	20m
3,3ft	6,6ft	9,8ft	13,1ft	16,4ft	19,7ft	23ft	26,2ft	29,5ft	32,8ft	36,1ft	39,4ft	42,7ft	45,9ft	49,2ft	52,5ft	55,8ft	59,1ft	62,3ft	65,6ft
4285lx	1071lx	476lx	268lx	171lx	119lx	87lx	67lx	53lx	43lx	35lx	30lx	25lx	22lx	19lx	17lx	15lx	13lx	12lx	11lx
398,1fc	99,5fcd	44,2fcd	24,9fcd	15,9fcd	11,1fcd	8,1fcd	6,2fcd	4,9fcd	4fcd	3,3fcd	2,8fcd	2,4fcd	2fcd	1,8fcd	1,6fcd	1,4fcd	1,2fcd	1,1fcd	1fcd

Intensities in 0° c-plane

0°	5°	10°	15°	20°	25°	30°	35°	40°	45°	50°	55°	60°	65°	70°	75°	80°	85°	90°	95°
4285	4270	4231	4164	4069	3943	3794	3612	3400	3150	2862	2491	2044	1551	1075	671	362	147	34	15
100%	100%	99%	97%	95%	92%	89%	84%	79%	74%	67%	58%	48%	36%	25%	16%	8%	3%	1%	0%

Intensities in 90° c-plane

0°	5°	10°	15°	20°	25°	30°	35°	40°	45°	50°	55°	60°	65°	70°	75°	80°	85°	90°	95°
4285	4279	4252	4215	4227	4238	4232	4331	3746	1998	1185	929	707	342	202	126	60	23	12	11
100%	100%	99%	98%	99%	99%	99%	101%	87%	47%	28%	22%	16%	8%	5%	3%	1%	1%	0%	0%

Intensities in 180° c-plane

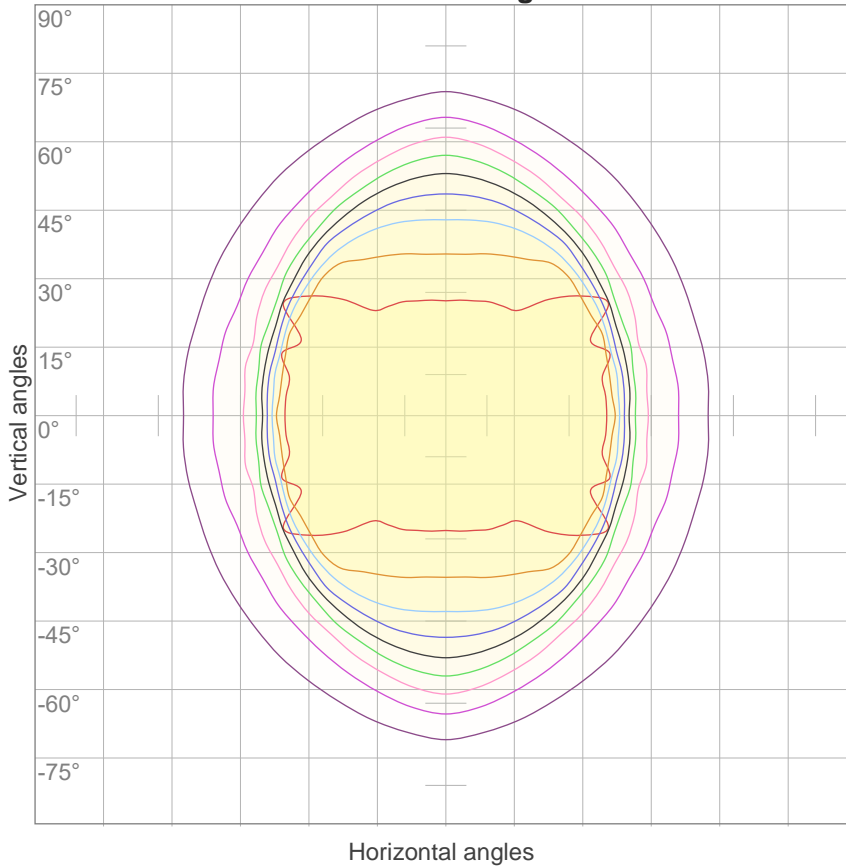
0°	5°	10°	15°	20°	25°	30°	35°	40°	45°	50°	55°	60°	65°	70°	75°	80°	85°	90°	95°
4285	4270	4231	4164	4069	3943	3794	3612	3400	3150	2862	2491	2044	1551	1075	671	362	147	34	15
100%	100%	99%	97%	95%	92%	89%	84%	79%	74%	67%	58%	48%	36%	25%	16%	8%	3%	1%	0%

Intensities in 270° c-plane

0°	5°	10°	15°	20°	25°	30°	35°	40°	45°	50°	55°	60°	65°	70°	75°	80°	85°	90°	95°
4285	4279	4252	4215	4227	4238	4232	4331	3746	1998	1185	929	707	342	202	126	60	23	12	11
100%	100%	99%	98%	99%	99%	99%	101%	87%	47%	28%	22%	16%	8%	5%	3%	1%	1%	0%	0%

Beam angle 50%	Field angle 10%	Cutoff angle 2,5%	Intensity ratio in 120° cone	Intensity ratio in 90° cone
102°	139,6°	160,7°	88,7%	66,4%

iso-candela diagram



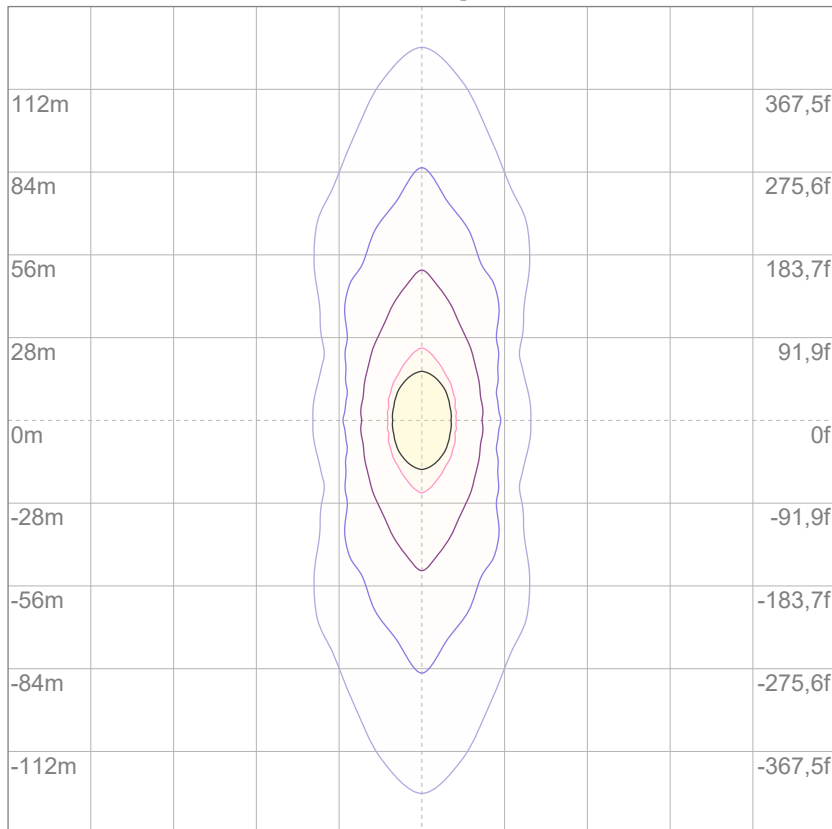
10%	428 cd
20%	857 cd
30%	1285 cd
40%	1714 cd
50%	2142 cd
60%	2571 cd
70%	2999 cd
80%	3428 cd
90%	3856 cd

Conditions:

Number of c-planes: 52

Candela at center: 4285 cd

iso-lux diagram



3%	1,29 lx
5%	2,14 lx
10%	4,28 lx
30%	12,9 lx
50%	21,4 lx

Conditions:

Number of c-planes: 52

Lux at center: 42,8 lx

Lux distribution on a surface when lamp is mounted at 10 meters from the surface.

Glare evaluation according to UGR

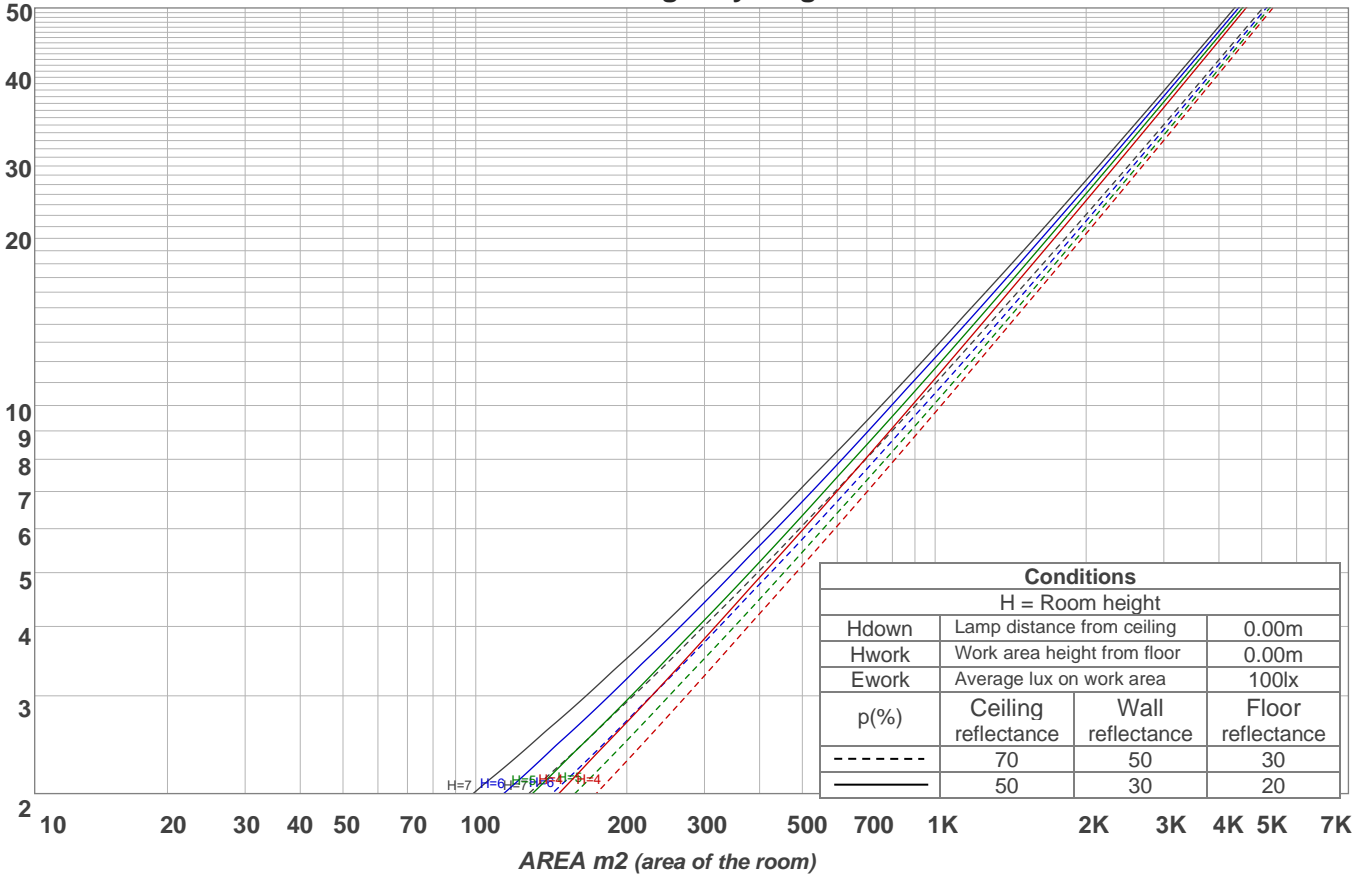
p Ceiling	70	70	50	50	30	70	70	50	50	30	
p Walls	50	30	50	30	30	50	30	50	30	30	
p Floor	20	20	20	20	20	20	20	20	20	20	
Room size X Y	Viewing direction at right angles to lamp axis					Viewing direction parallel to lamp axis					
2H	2H	25,4	26,5	25,7	26,8	27,0	21,7	22,7	21,9	23,0	23,3
	3H	26,4	27,5	26,8	27,8	28,0	21,6	22,7	22,0	23,0	23,2
	4H	26,8	27,8	27,2	28,1	28,4	21,6	22,7	22,0	23,0	23,2
	6H	27,1	28,0	27,4	28,3	28,7	21,7	22,6	22,0	22,9	23,3
	8H	27,2	28,1	27,5	28,4	28,8	21,6	22,5	22,0	22,8	23,3
	12H	27,2	28,1	27,6	28,4	28,9	21,6	22,4	21,9	22,8	23,2
4H	2H	25,3	26,3	25,7	26,6	26,9	22,0	23,0	22,4	23,3	23,6
	3H	26,5	27,3	26,9	27,7	28,1	22,1	23,0	22,5	23,4	23,8
	4H	26,9	27,6	27,3	28,1	28,6	22,1	22,9	22,5	23,3	23,9
	6H	27,2	28,0	27,7	28,3	28,7	22,1	22,8	22,6	23,2	23,6
	8H	27,3	28,0	27,8	28,4	28,8	22,0	22,7	22,6	23,1	23,5
	12H	27,4	27,9	27,9	28,4	28,9	22,0	22,6	22,5	23,0	23,5
8H	4H	26,8	27,5	27,3	27,8	28,2	22,2	22,9	22,7	23,2	23,6
	6H	27,2	27,7	27,7	28,2	28,7	22,2	22,7	22,7	23,2	23,7
	8H	27,3	27,8	27,9	28,3	29,0	22,2	22,6	22,7	23,2	23,8
	12H	27,4	27,8	28,0	28,3	28,9	22,2	22,5	22,8	23,0	23,7
12H	4H	26,7	27,3	27,2	27,7	28,2	22,2	22,7	22,7	23,2	23,6
	6H	27,2	27,6	27,7	28,1	28,8	22,2	22,6	22,7	23,2	23,8
	8H	27,3	27,7	27,9	28,2	28,8	22,2	22,6	22,8	23,1	23,7
Variation of the observer position for the luminaire distance S											
S = 1.0H	0,1 / -0,1					1,1 / -1,9					
S = 1.5H	0,7 / -1,3					2,3 / -2,9					
S = 2.0H	1,7 / -2,5					3,7 / -5,0					
CIE 117-1995. Corrected glare indices referring to 10822 lm total luminous flux											

Coefficients of Utilization

Ceiling reflectance	80				70				50			30			10			0			
Wall reflectance	70	50	30	10	70	50	30	10	50	30	10	50	30	10	50	30	10	0			
Floor reflectance	20	20	20	20	20	20	20	20	20	20	20	20	20	20	20	20	20	20	20	20	0
RCR	(RCR: Room Cavity Ratio)																				
	Room Values are expressed as percentage of Lumens delivered to the task surface																				
0	119	119	119	119	116	116	116	116	111	111	111	106	106	106	101	101	101	99			
1	110	106	103	99	108	104	101	98	100	97	95	96	93	91	92	90	89	87			
2	102	95	89	84	99	93	87	83	89	84	81	86	82	79	83	80	77	75			
3	94	84	77	71	91	83	76	71	80	74	69	77	72	68	74	70	67	65			
4	86	76	68	62	84	74	67	61	72	65	60	69	64	59	67	62	58	56			
5	80	68	60	54	78	67	59	53	65	58	53	63	57	52	61	56	52	50			
6	74	62	53	47	72	61	53	47	59	52	47	57	51	46	55	50	46	44			
7	69	56	48	42	67	55	47	42	54	47	42	52	46	41	51	45	41	39			
8	64	51	43	38	62	51	43	38	49	42	37	48	42	37	47	41	37	35			
9	60	47	39	34	58	46	39	34	45	38	34	44	38	33	43	37	33	32			
10	56	43	36	31	55	43	36	31	42	35	31	41	35	30	40	34	30	29			

LAMPS (number of lamps)

Luminaire budgetary diagram



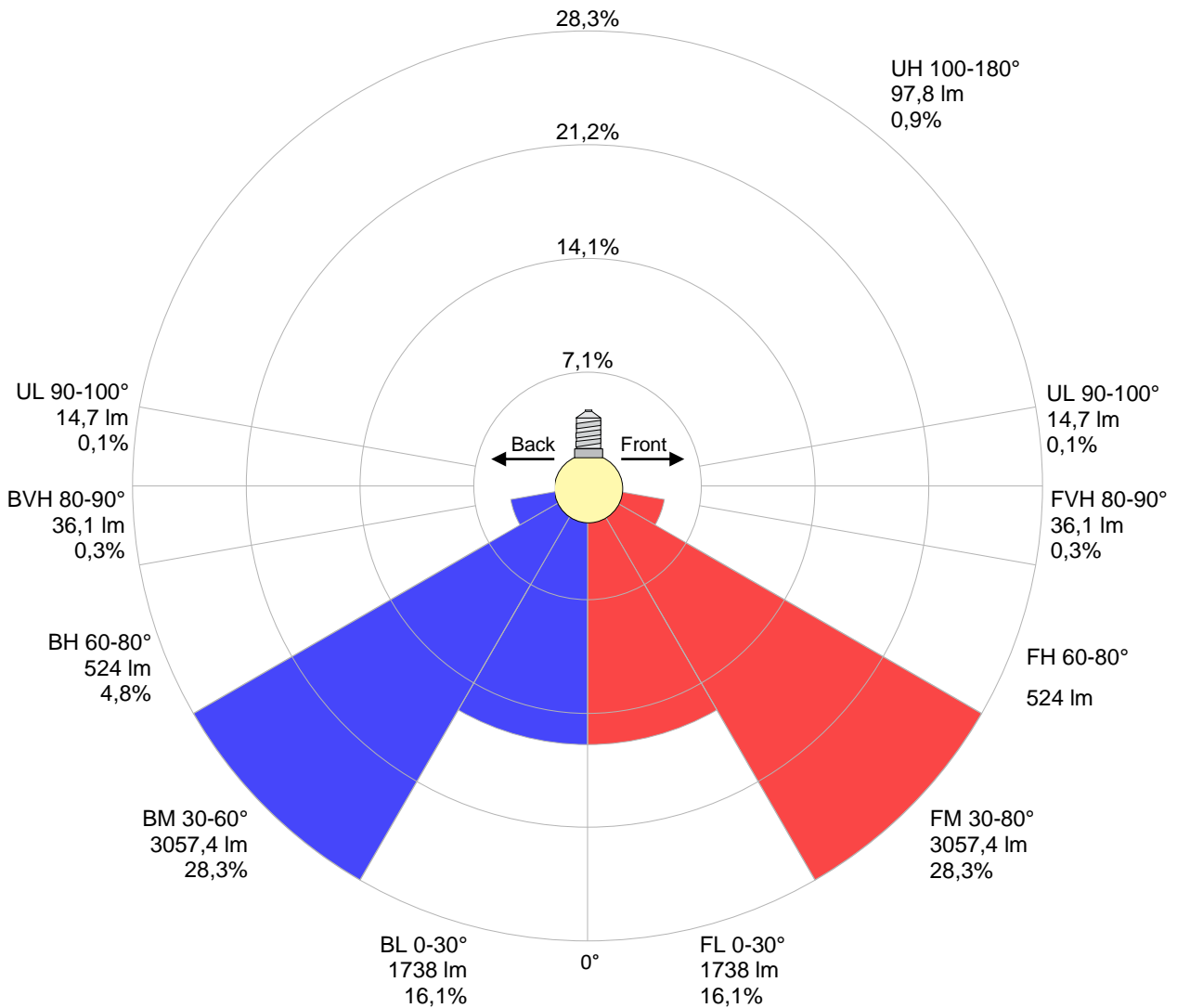
Zonal Lumen Summary

0°-10°	10°-20°	20°-30°	30°-40°	40°-50°	50°-60°	60°-70°	70°-80°	80°-90°
{LUM0-10}	1186 lm	1884 lm	2466 lm	2239 lm	1415 lm	744 lm	298 lm	70,0 lm
90°-100°	100°-110°	110°-120°	120°-130°	130°-140°	140°-150°	150°-160°	160°-170°	170°-180°
14,4 lm	15,5 lm	16,3 lm	16,4 lm	15,3 lm	13,5 lm	11,0 lm	7,30 lm	2,57 lm

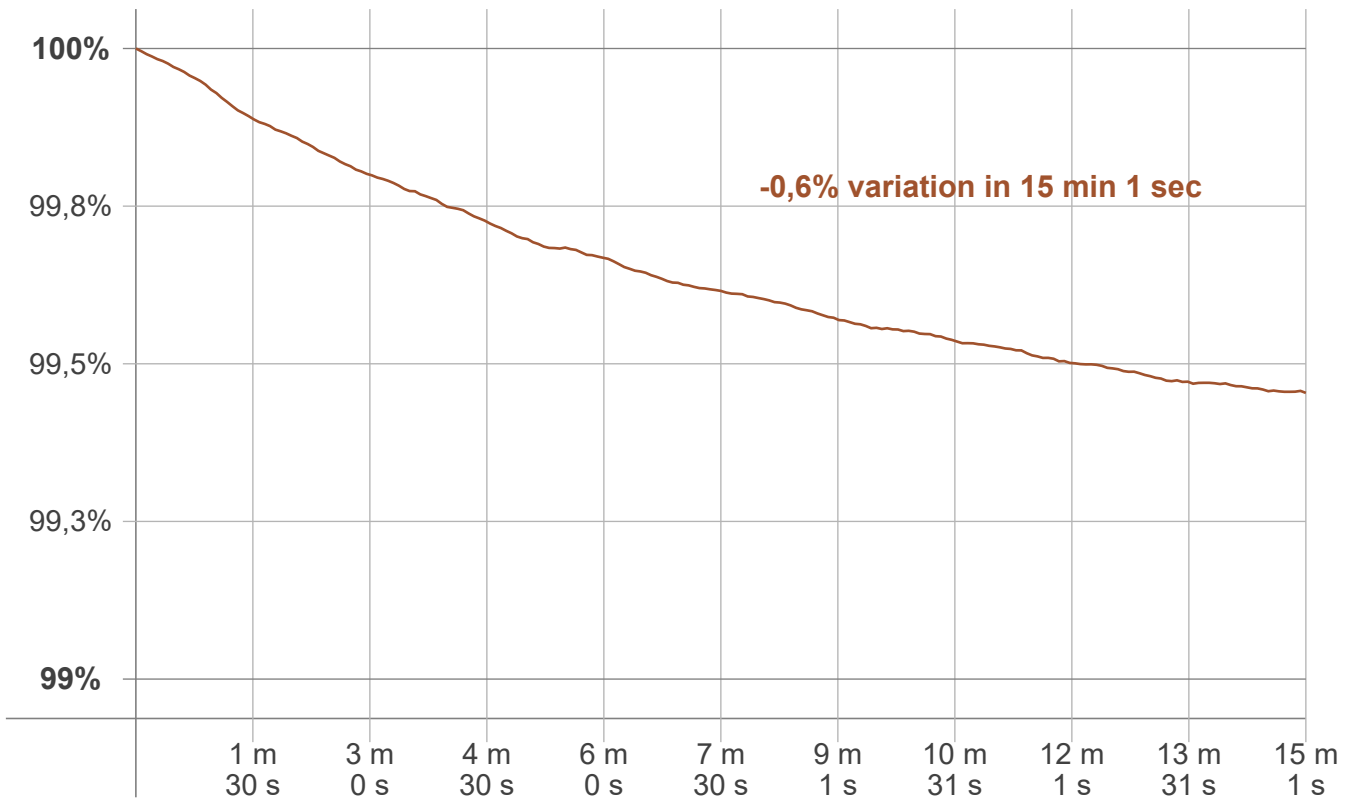
LCS table

BUG rating:	B3 U3 G1	
Forward light	Lumens	Lumens %
Low(0-30):	1738	16,1%
Medium(30-60):	3057,4	28,3%
High(60-80):	524	4,8%
Very high(80-90):	36,1	0,3%
Back light		
Low(0-30):	1738	16,1%
Medium(30-60):	3057,4	28,3%
High(60-80):	524	4,8%
Very high(80-90):	36,1	0,3%
Uplight		
Low(90-100):	14,7	0,1%
High(100-180):	97,8	0,9%

LCS graph



Warmup curve



Warmup result

Warmup time:	Lamp stabilized in 15 min 1 sec
Warmup variation	-0,6%

Warmup conditions

Stable period:	15 min
Stable change max:	2,0%
Minimum time:	15 min

Color temperature change

CCT start	CCT change	CCT end
4001 K	-1 K	4000 K

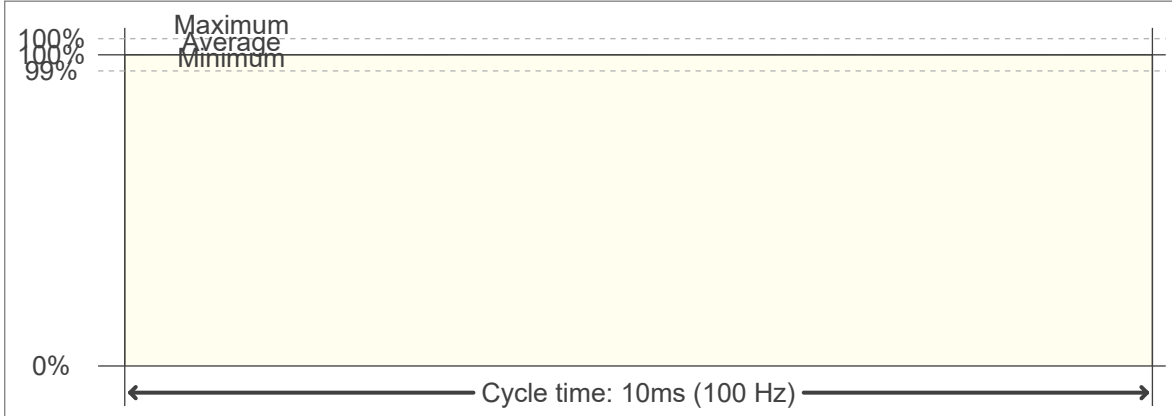
Output change

Output start	Output change	Output end
10882 lm	-60 lm	10822 lm

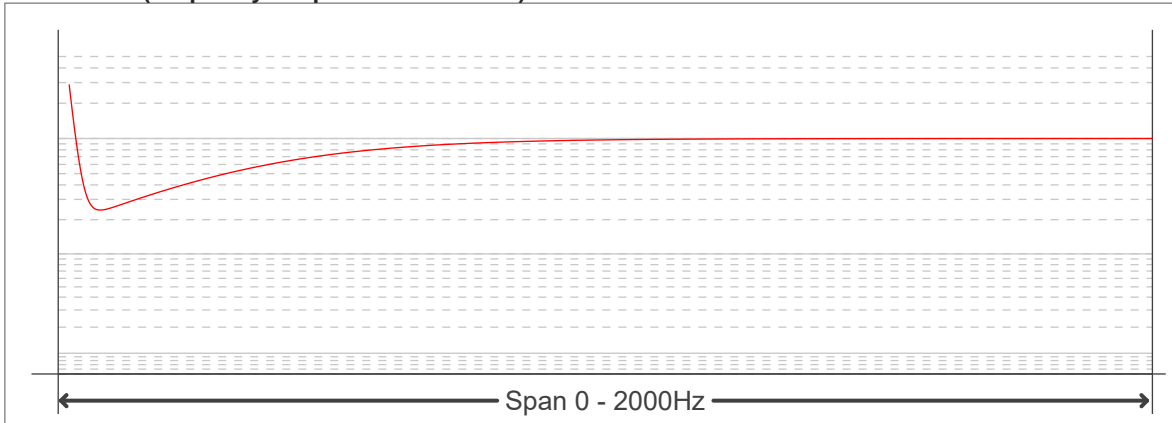
Flicker curve (complete sampled flicker signal)



Flicker frame (frame of one flicker period)



Flicker FFT (frequency scope of flicker curve)



Flicker results:

Flicker frequency:		100 Hz	
Flicker index:	0	JA8/10 40Hz	0,02 %
Flicker percentage:	0,08 %	JA8/10 90Hz	0,02 %
SVM: (Visual flicker)	0	JA8/10 200Hz	0,05 %
PstLM	0,01	JA8/10 400Hz	0,06 %
Mp	0,01	JA8/10 1000Hz	0,06 %

Flicker conditions:

Sample rate:	20000 samples/second
--------------	----------------------