

# Light Measurement Report

Print date: 18-2-2025

Measurement date and time: 18-2-2025 12:00:44 – Measurement no. VFR-250218-0011-MS

Measurement tracking No. and Link: [VT250218-006270](#)

Operator:



## Laboratory and Equipment

Laboratory Owner and Location  
Goniospectrometer System and Type  
Sensor Name, Calibr. Date and Serial No.  
Spectrometer Manufacturer and Model

Viso Systems, Copenhagen V, Denmark  
LabSpion – Type C, horizontal  
LabSensor Model2 – 11-1-2024 – 3130191315  
Ibsen Photonics, Denmark – Freedom VIS (Custom Viso)

## Measurement Conditions

Number of C-planes and Resolution  
 $\gamma$  (gamma)-Resolution  
Test Distance  
Input Power, Power and Displ. Factors  
Input RMS Voltage and Current  
Frequency of Input Power  
Warm-up Time and Variation

12 planes – 30°  
5°  
12,00 m  
14,3 W – PF 0,91 – DPF 0,92  
230 V – 0,068 A  
50 Hz  
Lamp stabilized in 15 min 3 sec – 2,0%

## Tested Light Source

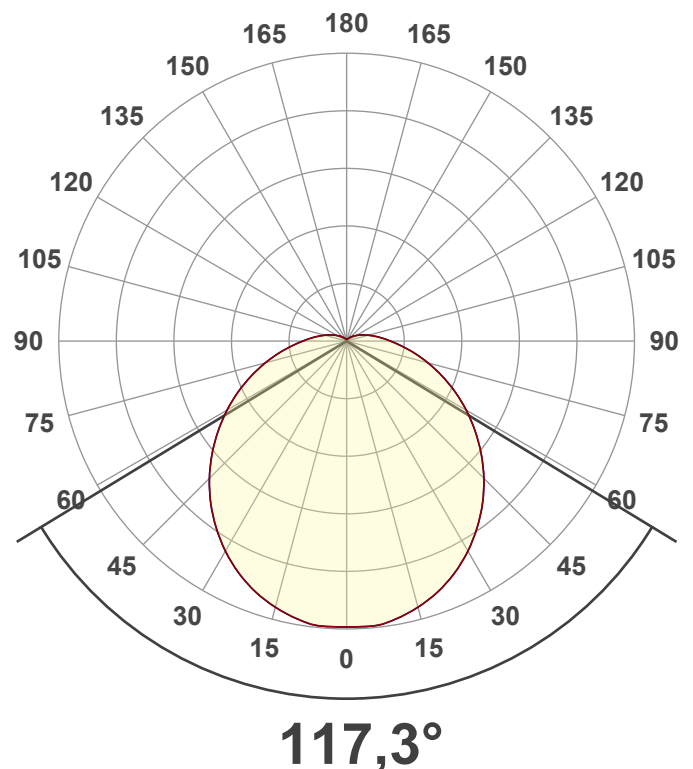
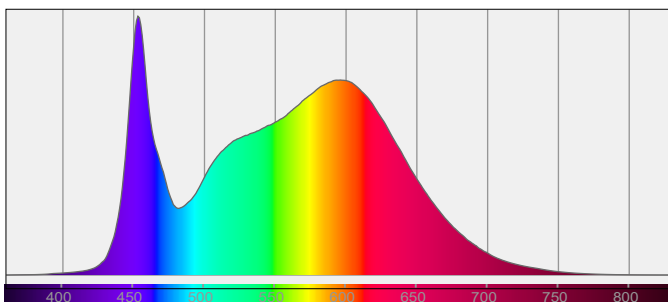
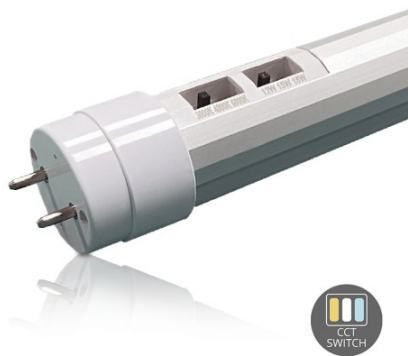
Product Name  
Item No. and Manufacturer  
Product Description (line 1)

802295-4000K-15W  
802295-4000K-15W – Dutchfulfillment  
LED TL-BUIS | T8 | 120CM | 12W-15W-18W | CCT-SWITCH

## Main Light Measurement Results

Output – Total Lumen (Up% / Down%)  
Efficiency  
Peak Intensity and Beam Angle  
Correlated Color Temperature, Target/Measured  
Color Rendering Index  
Color Rendering TM30-18  
Color Shift, CIE duv and MacAdam Steps  
Flicker

2169 lm – 9,22% / 90,78%  
152 lm/W  
610 cd – 117,3°  
CCT = 4000 K / 4177 K  
CRI 85,0  
 $R_f$  84,2 –  $R_g$  94,6  
Duv -0,0009 – SDCM 3,9  
SVM 2,9 – PstLM 0,13



# Light Measurement Report

Print date: 18-2-2025

Measurement date and time: 18-2-2025 12:00:44 – Measurement no. VFR-250218-0011-MS

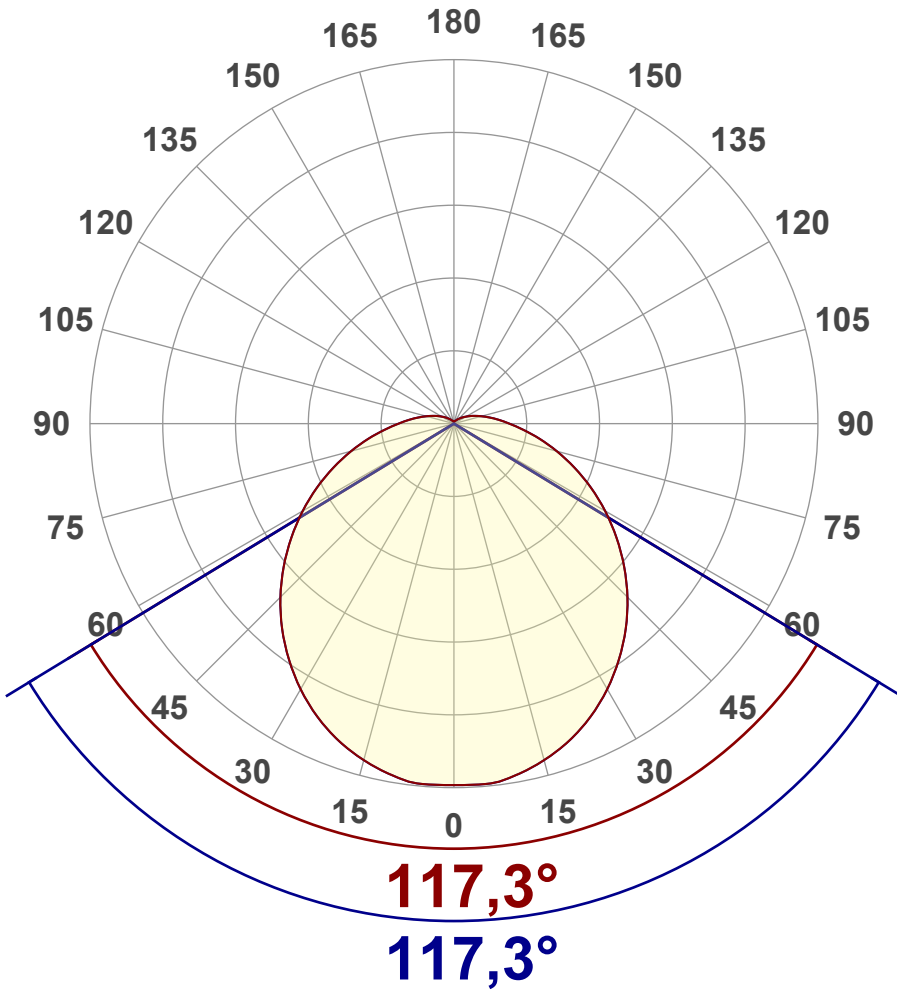
Measurement tracking No. and Link: [VT250218-006270](#)

Operator:



## Luminous Intensity diagram

Unit: 0-100% of peak intensity



## Main Values

Output (total Lumen)	2169 lm
Lumen Up% / Down%	9,22% / 90,78%
Peak Intensity	610 cd
Beam Angle (50%)	117,3°
Beam Angle (90%)	117,3°
Beam Angle (10%)	117,3°

## Cut-off Angle

Average 2,5%	258,2°
--------------	--------

## Field Angle

Average 10%	199,5°
-------------	--------

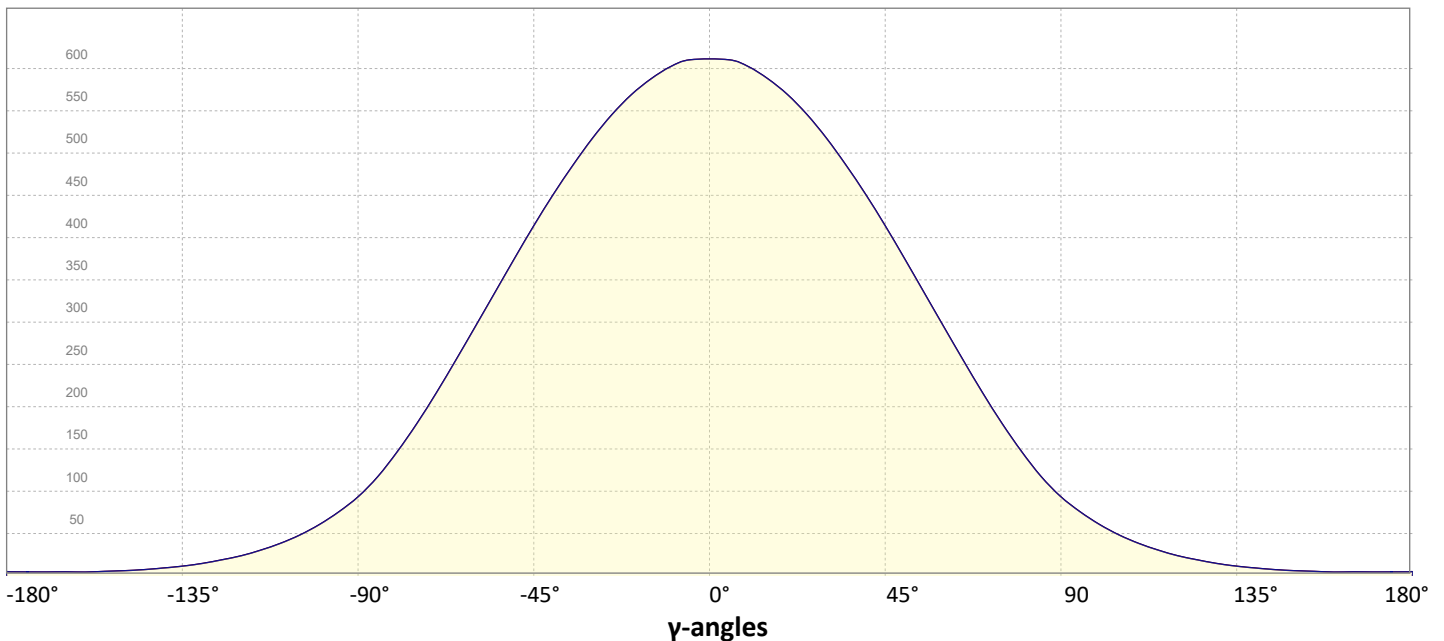
## Intensity Ratio

In 120° cone	64,4%
In 90° cone	43,3%

**C000-C180**

**C090-C270**

## Linear distribution diagram - Intensity (candela) vs $\gamma$ -angle



# Light Measurement Report

Print date: 18-2-2025

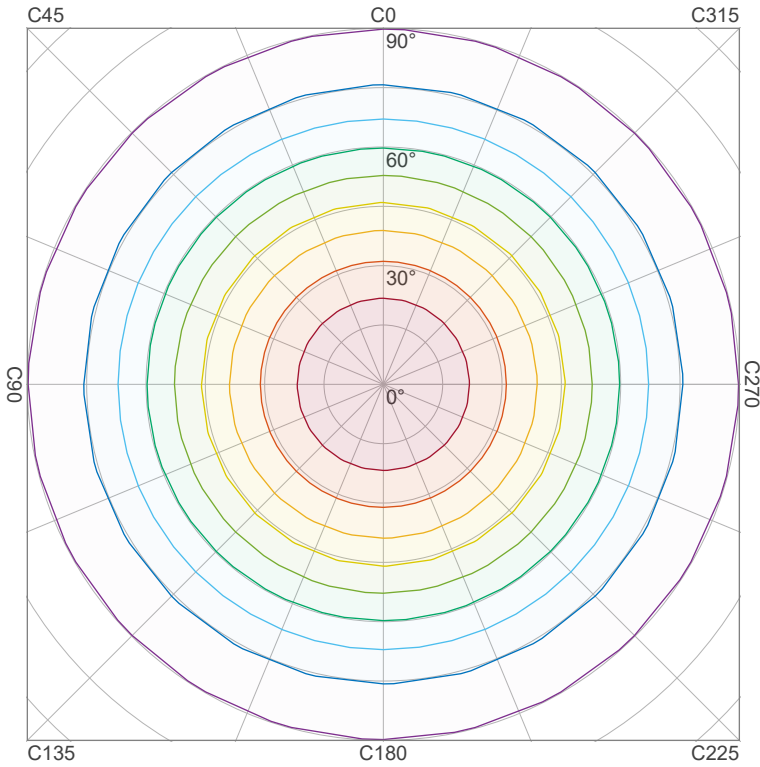
Measurement date and time: 18-2-2025 12:00:44 – Measurement no. VFR-250218-0011-MS

Measurement tracking No. and Link: [VT250218-006270](#)

Operator:



## Iso-intensity Diagram (Iso-candela)

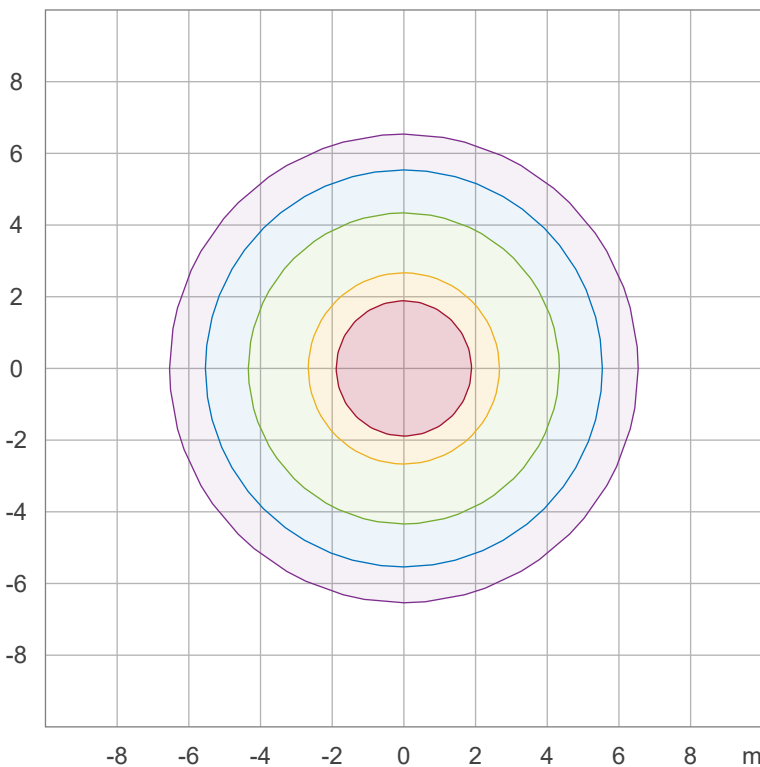


90 %	549,3 cd
80 %	488,2 cd
70 %	427,2 cd
60 %	366,2 cd
50 %	305,2 cd
40 %	244,1 cd
30 %	183,1 cd
20 %	122,1 cd
10 %	61,0 cd

Peak intensity: 610,3 cd

Number of c-planes: 12

## Iso-illuminance Diagram (Iso-lux)



50,0 %	33,9 lx
30,0 %	20,3 lx
10,0 %	6,8 lx
5,0 %	3,4 lx
3,0 %	2,0 lx

Peak illuminance: 67,8 lx

Mounting height: 3,0 m

Number of c-planes: 12

# Light Measurement Report

Print date: 18-2-2025

Measurement date and time: 18-2-2025 12:00:44 – Measurement no. VFR-250218-0011-MS

Measurement tracking No. and Link: [VT250218-006270](https://www.viso-systems.com/VT250218-006270)

Operator:



## Color details

Correlated Color Temperature, Target CCT = 4000 K  
 Correlated Color Temperature, Measured CCT = 4177 K  
 Color Rendering Index CRI 85,0  
 Color Rendering Index, R9 (red component) R9 = 14,5  
 Color Rendering TM30-18 R<sub>f</sub> 84,2 – R<sub>g</sub> 94,6  
 Color Quality Scale CQS = 83,1

MacAdam Steps SDCM = 3,9  
 Color coordinates CIE 1931 (x;y) = (0,381;0,377)  
 Color coordinate CIEs 1960 (u;v) = (0,225;0,334)  
 Color deviation from BBL Duv = -0,0009  
 Color coordinate CIEs 1976 (CIELUV) (u';v') = (0,225;0,502)

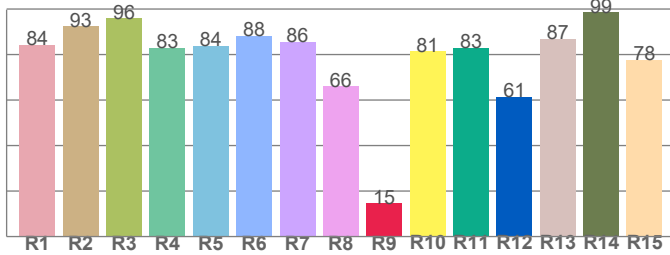
### CIE 1931



### CIE 1931 – zoomed on Planckian locus



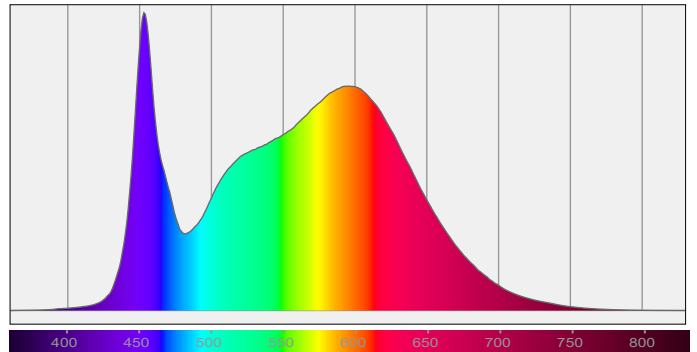
### Color Rendering Index per reference color (CIE 1995)



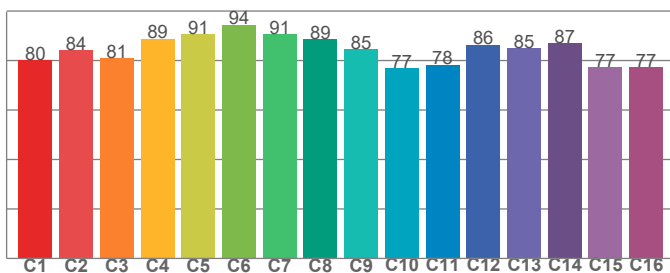
CRI R values, only R1-R8 are used to calculate final CRI value

R1	R2	R3	R4	R5	R6	R7	R8	R9	R10	R11	R12	R13	R14	R15
84,2	92,5	95,9	83,1	83,8	88,3	85,6	66,2	14,5	81,4	82,9	61,4	86,9	98,5	77,6

### Spectral power distribution (SPD) / W/nm – 0-100%



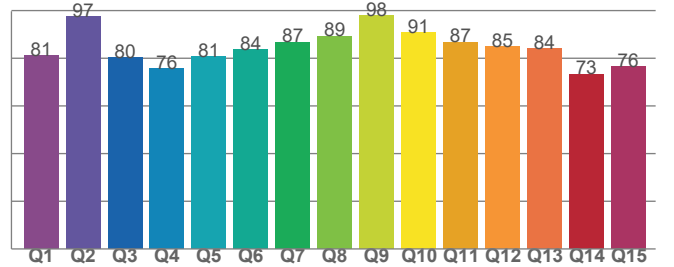
### TM30-18 R<sub>f</sub>-values per hue bin



TM30 C values, 16 binned values out of total of 99 C values

C1	C2	C3	C4	C5	C6	C7	C8	C9	C10	C11	C12	C13	C14	C15	C16
80,1	84,2	80,9	88,8	90,5	94,4	90,5	88,6	84,5	76,9	78,2	86,4	85,1	87,1	77,2	77,3

### Color Quality Scale by reference color



CQS Q values

Q1	Q2	Q3	Q4	Q5	Q6	Q7	Q8	Q9	Q10	Q11	Q12	Q13	Q14	Q15
81,1	97,5	80,3	75,6	80,6	83,5	86,6	89,4	97,9	90,7	86,8	84,8	84,0	73,4	76,5

# Light Measurement Report

Print date: 18-2-2025

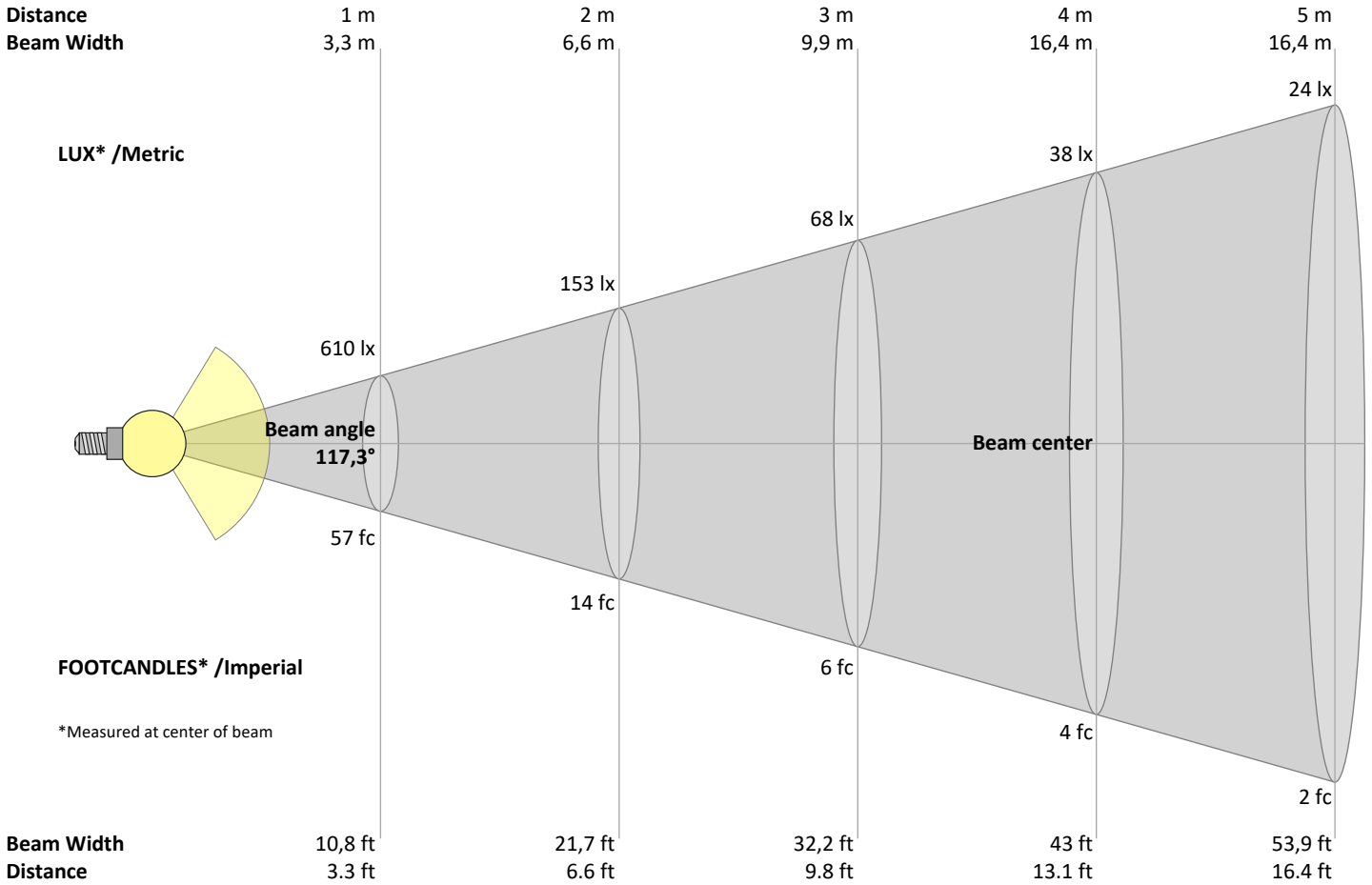
Measurement date and time: 18-2-2025 12:00:44 – Measurement no. VFR-250218-0011-MS

Measurement tracking No. and Link: [VT250218-006270](https://www.viso-systems.com/VT250218-006270)

Operator:



## Beam Details



### Beam intensities from 1 – 20 m

1	2	3	4	5	6	7	8	9	10	11	12	13	14	15	16	17	18	19	20	m	
3,3	6,6	9,8	13,1	16,4	19,7	23	26,2	29,5	32,8	36,1	39,4	42,7	45,9	49,2	52,5	55,8	59,1	62,3	65,6	ft	
610	153	68	38	24	17	12	10	8	6	5	4	4	3	3	2	2	2	2	2	2	lux
56,7	14,2	6,3	3,5	2,3	1,6	1,2	0,9	0,7	0,6	0,5	0,4	0,3	0,3	0,3	0,2	0,2	0,2	0,2	0,2	0,1	fc

### Intensities in 0° c-plane

0°	9°	18°	27°	36°	45°	54°	63°	72°	81°	90°	99°	108°	117°	126°	135°	144°	153°	162°	171°	γ	
610	604	577	534	479	414	343	271	201	141	93	63	42	28	18	11	8	6	4	4	4	cd
100%	99%	94%	88%	78%	68%	56%	44%	33%	23%	15%	10%	7%	5%	3%	2%	1%	1%	1%	1%	1%	of 0°val

### Intensities in 90° c-plane

0°	9°	18°	27°	36°	45°	54°	63°	72°	81°	90°	99°	108°	117°	126°	135°	144°	153°	162°	171°	γ	
610	604	577	534	479	414	343	271	201	141	93	63	42	28	18	11	8	6	4	4	4	cd
100%	99%	94%	88%	78%	68%	56%	44%	33%	23%	15%	10%	7%	5%	3%	2%	1%	1%	1%	1%	1%	of 0°val

### Intensities in 180° c-plane

0°	9°	18°	27°	36°	45°	54°	63°	72°	81°	90°	99°	108°	117°	126°	135°	144°	153°	162°	171°	γ	
610	604	577	534	479	414	343	271	201	141	93	63	42	28	18	11	8	6	4	4	4	cd
100%	99%	94%	88%	78%	68%	56%	44%	33%	23%	15%	10%	7%	5%	3%	2%	1%	1%	1%	1%	1%	of 0°val

### Intensities in 270° c-plane

0°	9°	18°	27°	36°	45°	54°	63°	72°	81°	90°	99°	108°	117°	126°	135°	144°	153°	162°	171°	γ	
610	604	577	534	479	414	343	271	201	141	93	63	42	28	18	11	8	6	4	4	4	cd
100%	99%	94%	88%	78%	68%	56%	44%	33%	23%	15%	10%	7%	5%	3%	2%	1%	1%	1%	1%	1%	of 0°val

# Light Measurement Report

Print date: 18-2-2025

Measurement date and time: 18-2-2025 12:00:44 – Measurement no. VFR-250218-0011-MS

Measurement tracking No. and Link: [VT250218-006270](#)

Operator:



## Light Planning – UGR table

Uncorrected, comprehensive UGR table according to 117-1995

Reflectances		70	70	50	50	30	70	70	50	50	30
	ρ Ceiling	70	70	50	50	30	70	70	50	50	30
	ρ Walls	50	30	50	30	30	50	30	50	30	30
	ρ Floor	20	20	20	20	20	20	20	20	20	20
Room size		Viewed Crosswise					Viewed Endwise				
H = mounting height above eye level		(Viewing direction orthogonal to lamp length axis)					(Viewing direction parallel to lamp length axis)				
X	Y										
2H	2H	21,7	22,9	22,1	23,4	23,8	20,8	22,0	21,2	22,5	22,9
	3H	23,6	24,8	24,1	25,3	25,7	22,3	23,6	22,9	24,0	24,4
	4H	24,6	25,8	25,1	26,2	26,6	23,1	24,3	23,6	24,7	25,1
	6H	25,7	26,7	26,1	27,2	27,7	23,8	24,9	24,3	25,3	25,9
	8H	26,2	27,3	26,7	27,7	28,3	24,1	25,2	24,6	25,6	26,2
	12H	26,8	27,8	27,3	28,3	28,9	24,4	25,4	24,9	25,9	26,5
4H	2H	22,2	23,3	22,7	23,8	24,2	21,5	22,7	22,0	23,1	23,5
	3H	24,4	25,4	24,9	25,8	26,5	23,3	24,4	23,8	24,8	25,4
	4H	25,4	26,5	26,0	26,9	27,6	24,2	25,2	24,7	25,6	26,3
	6H	26,6	27,5	27,2	28,0	28,5	25,0	25,9	25,6	26,4	26,9
	8H	27,2	28,0	27,9	28,6	29,1	25,4	26,2	26,0	26,7	27,2
	12H	27,9	28,6	28,6	29,2	29,8	25,7	26,4	26,3	27,0	27,6
8H	4H	25,7	26,5	26,3	27,0	27,6	24,6	25,4	25,2	25,9	26,5
	6H	27,1	27,7	27,7	28,3	29,0	25,6	26,3	26,3	26,9	27,6
	8H	27,8	28,4	28,5	29,1	29,8	26,2	26,7	26,8	27,4	28,1
	12H	28,7	29,2	29,4	29,8	30,5	26,7	27,1	27,3	27,8	28,5
12H	4H	25,7	26,4	26,3	27,0	27,6	24,7	25,3	25,3	25,9	26,5
	6H	27,2	27,7	27,8	28,4	29,2	25,8	26,4	26,4	27,0	27,8
	8H	28,0	28,4	28,7	29,1	29,8	26,4	26,9	27,1	27,5	28,2

### Variations with the observer position for the luminaire spacings, S:

S = 1.0H	0,1 / 0,0	0,1 / -0,1
S = 1.5H	0,1 / -0,1	0,1 / -0,1
S = 2.0H	0,3 / -0,3	0,2 / -0,3

## Coefficients of Utilization

Ceiling reflectance	80			70			50			30			10			0		
Wall reflectance	70	50	30	10	70	50	30	10	50	30	10	50	30	10	50	30	10	0
Floor reflectance	20	20	20	20	20	20	20	20	20	20	20	20	20	20	20	20	20	0
RCR	(RCR: Room Cavity Ratio) Room Values are expressed as percentage of Lumen delivered to the task surface																	
0	117	117	117	117	113	113	113	113	106	106	106	100	100	100	94	94	94	91
1	105	99	94	89	101	96	91	87	90	86	83	84	81	78	79	77	74	72
2	94	85	78	71	91	83	76	70	77	72	67	73	68	64	68	64	61	58
3	86	74	66	59	82	72	64	57	68	61	55	64	58	53	60	55	51	48
4	78	66	56	49	75	64	55	48	60	52	47	56	50	45	53	48	43	41
5	72	58	49	42	69	57	48	41	53	46	40	50	44	39	48	42	38	35
6	66	52	43	37	64	51	42	36	48	41	35	46	39	34	43	37	33	31
7	61	47	38	32	59	46	38	32	44	36	31	42	35	30	39	34	29	27
8	57	43	35	29	55	42	34	28	40	33	27	38	31	27	36	30	26	24
9	53	40	31	26	51	39	31	25	37	30	25	35	29	24	33	28	23	21
10	50	36	28	23	48	36	28	23	34	27	22	32	26	22	31	25	21	19

# Light Measurement Report

Print date: 18-2-2025

Measurement date and time: 18-2-2025 12:00:44 – Measurement no. VFR-250218-0011-MS

Measurement tracking No. and Link: [VT250218-006270](https://www.viso-systems.com/VT250218-006270)

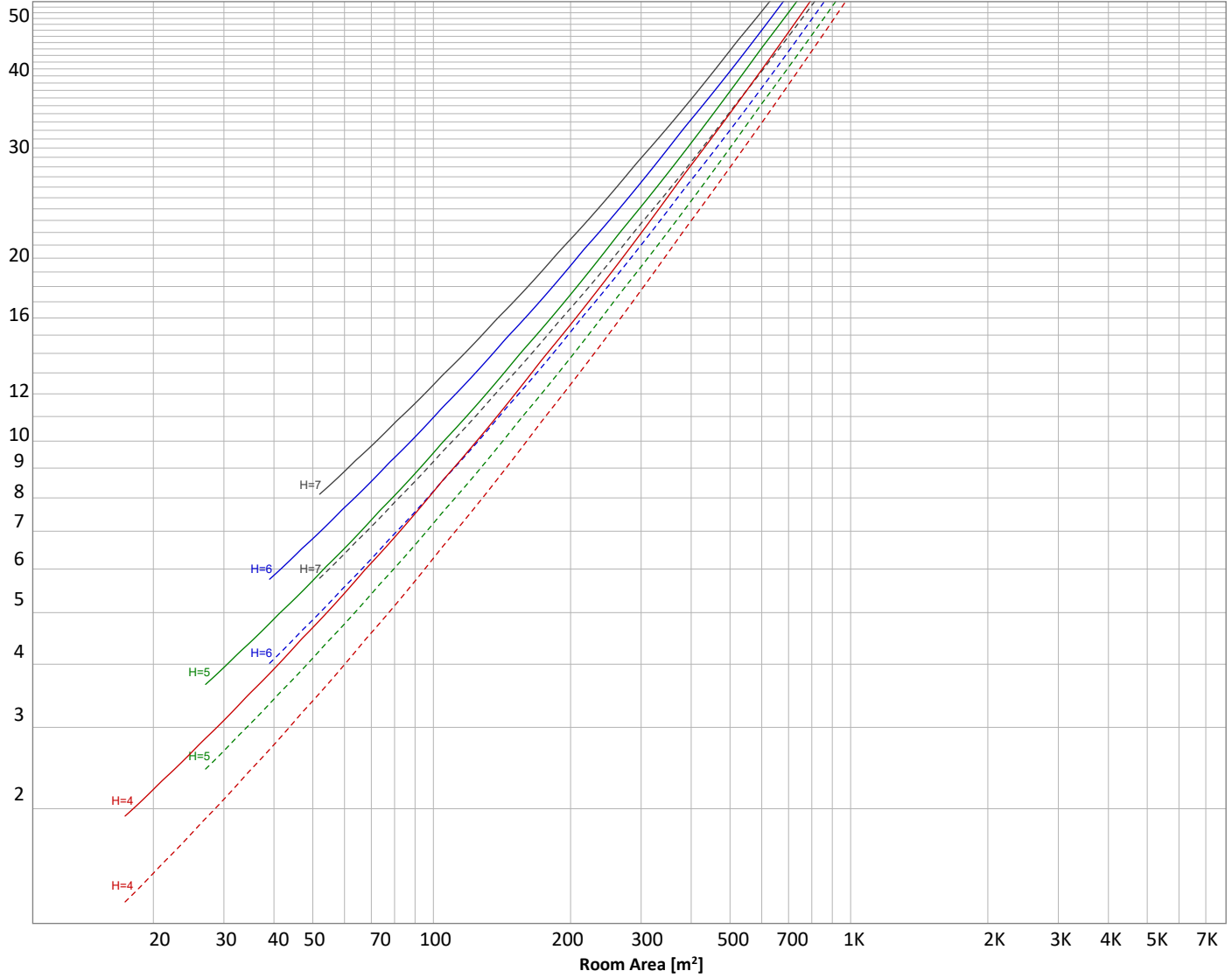
Operator:



## Luminaire budgetary diagram

Uncorrected, comprehensive UGR table according to 117-1995

LAMPS (number of lamps)



### Conditions

H = Room height	Flux = 2169 lm				
H <sub>down</sub> = Lamp distance from ceiling =	0.00 m	Line type	Ceiling reflectance	ρ(%) Wall reflectance	Floor reflectance
H <sub>work</sub> = Work area height from floor =	0.00 m	-----	70	50	30
E <sub>work</sub> = Average lux on work area =	100 lx	—————	50	30	20

### Zonal Lumen Summary

0°-10°	10°-20°	20°-30°	30°-40°	40°-50°	50°-60°	60°-70°	70°-80°	80°-90°
57,9 lm	166 lm	251 lm	304 lm	319 lm	299 lm	252 lm	191 lm	129 lm
90°-100°	100°-110°	110°-120°	120°-130°	130°-140°	140°-150°	150°-160°	160°-170°	170°-180°
83,1 lm	51,5 lm	30,4 lm	17,0 lm	9,02 lm	4,67 lm	2,42 lm	1,28 lm	0,428 lm

# Light Measurement Report

Print date: 18-2-2025

Measurement date and time: 18-2-2025 12:00:44 – Measurement no. VFR-250218-0011-MS

Measurement tracking No. and Link: [VT250218-006270](#)

Operator:



## Outdoor Light Planning

### Lumen per Zone

Zone (γ)	Lumen	% Total
0-10°	58 lm	2,7%
10-20°	166 lm	7,6%
20-30°	251 lm	11,6%
30-40°	304 lm	14,0%
40-50°	319 lm	14,7%
50-60°	299 lm	13,8%
60-70°	252 lm	11,6%
70-80°	191 lm	8,8%
80-90°	129 lm	6,0%
90-100°	83 lm	3,8%
100-110°	52 lm	2,4%
110-120°	30 lm	1,4%
120-130°	17 lm	0,8%
130-140°	9 lm	0,4%
140-150°	5 lm	0,2%
150-160°	2 lm	0,1%
160-170°	1 lm	0,1%
170-180°	0 lm	0,0%
<b>Total</b>	<b>2169 lm</b>	<b>100,0%</b>

### Intensity peaks

Max intensity	610 cd
Intensity, 90°	93 cd
Intensity, 0°	610 cd

### Zonal Lumen summary

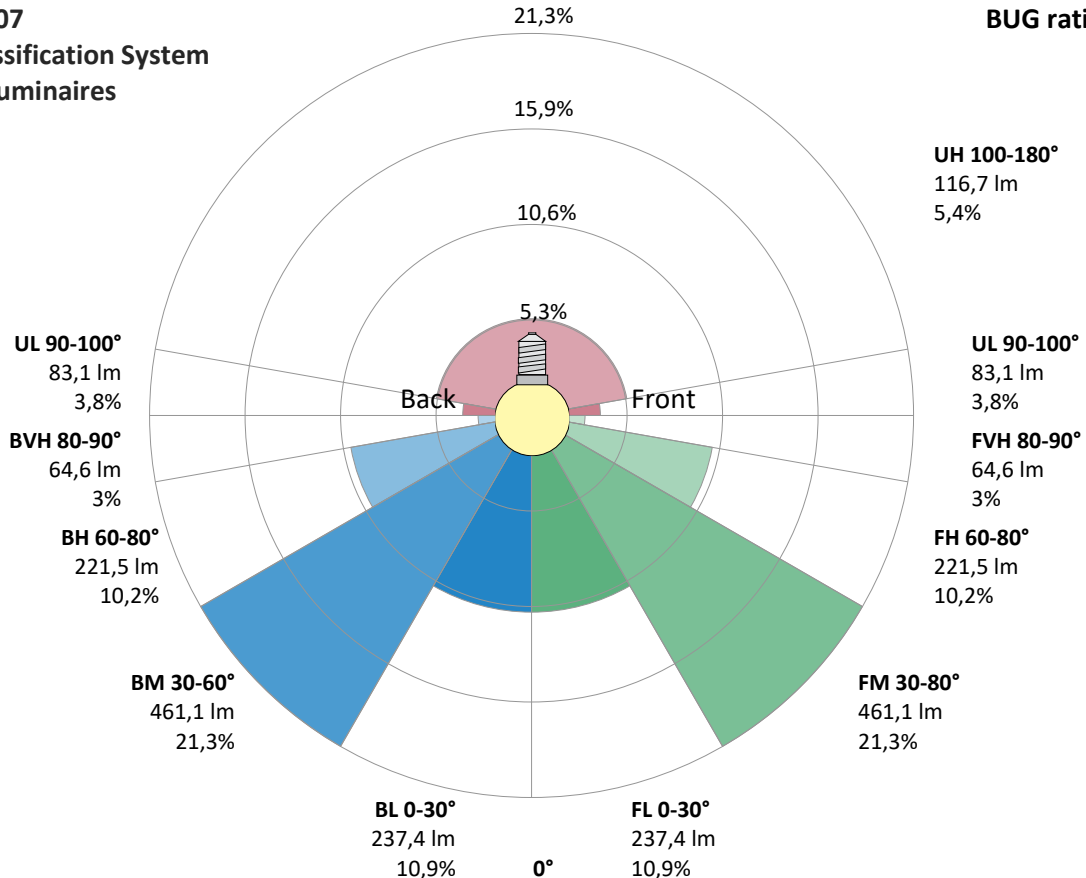
Zone (γ)	Lumen	% Total
0-30°	475 lm	21,9%
0-40°	778 lm	35,9%
0-60°	1397 lm	64,4%
60-90°	572 lm	26,4%
70-100°	403 lm	18,6%
90-120°	165 lm	7,6%
0-90°	1969 lm	90,8%
90-180°	200 lm	9,2%
0-180°	2169 lm	100,0%

### BUG rating

	Lumen	% Total
<b>Forward light</b>		
Low(0-30°)	237 lm	10,9%
Medium(30-60°)	461 lm	21,3%
High(60-80°)	221 lm	10,2%
Very high(80-90°)	65 lm	3,0%
<b>Back light</b>		
Low(0-30°)	237 lm	10,9%
Medium(30-60°)	461 lm	21,3%
High(60-80°)	221 lm	10,2%
Very high(80-90°)	65 lm	3,0%
<b>Uplight</b>		
Low(90-100°)	83 lm	3,8%
High(100-180°)	117 lm	5,4%

## IESNA TM-15-07 Luminaire Classification System For Outdoor Luminaires

**BUG rating B1 U3 G1**



# Light Measurement Report

Print date: 18-2-2025

Measurement date and time: 18-2-2025 12:00:44 – Measurement no. VFR-250218-0011-MS

Measurement tracking No. and Link: [VT250218-006270](#)

Operator:

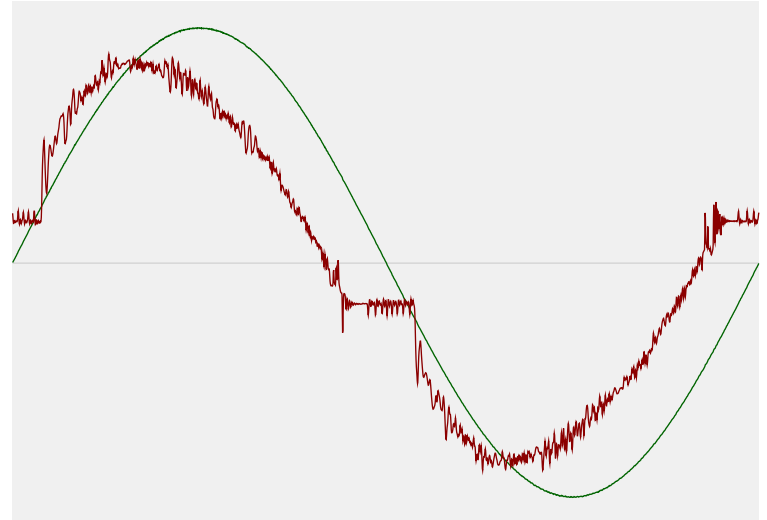


## Power Details

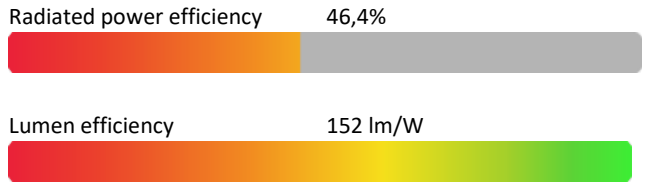
### Input Power

Power feed to light source	14,3 W
Frequency of input power	50 Hz
RMS Input voltage feed, $V_{RMS}$	230 V
RMS Input current feed, $I_{RMS}$	0,068 A
Volt-Ampere or apparent power = $V_{RMS} * I_{RMS}$	15,75 VA
Displacement factor of AC power feed	0,92
Power factor of AC current feed	0,91
Total harmonic distortion of the current	14,16%
Total harmonic distortion of the voltage	0,07%

### Input Power Curve



### Efficiency



## Stabilization Details

### Warmup Conditions

Stable period	15 min
Stable change max	2,0%
Minimum time	15 min

### Color Temperature Change

CCT start	3998 K
CCT shift	+2 K
CCT end	4000 K

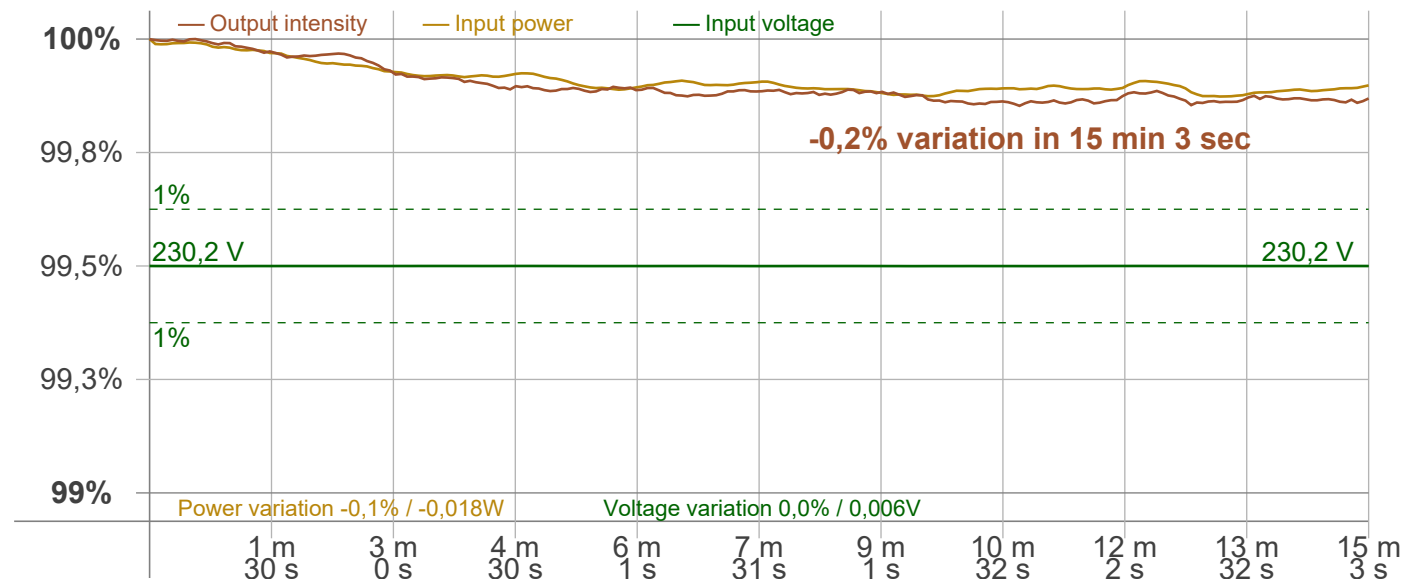
### Warmup Result

Total warmup time	Lamp stabilized in 15 min 3 sec
Warmup variation	-0,2%

### Output Change

Output start	2172 lm
Output change	-3 lm
Output end	2169 lm

### Stabilization Curve



# Light Measurement Report

Print date: 18-2-2025

Measurement date and time: 18-2-2025 12:00:44 – Measurement no. VFR-250218-0011-MS

Measurement tracking No. and Link: [VT250218-006270](https://www.viso-systems.com/VT250218-006270)

Operator:



## Flicker /TLA details

Flicker Meter Type: Viso Systems LabFlicker  
 Frequency of input power: 50 Hz  
 Flicker/TLA sample rate: 20000 samples/s

**Measurement time**  
 PstLM: 180 sec  
 All other indices: 1,2 sec

### Flicker indices according to Illuminating Engineering Society (IES)

Flicker frequency: 100 Hz  
 Percent Flicker: 72,27 %  
 Flicker index: 0,24

### Flicker indices according to California Energy Commission (CEC) 2016b

JA8/10 40 Hz: 0,15 %  
 JA8/10 90 Hz: 0,45 %  
 JA8/10 200 Hz: 74,01 %  
 JA8/10 400 Hz: 72,21 %  
 JA8/10 1000 Hz: 72,33 %

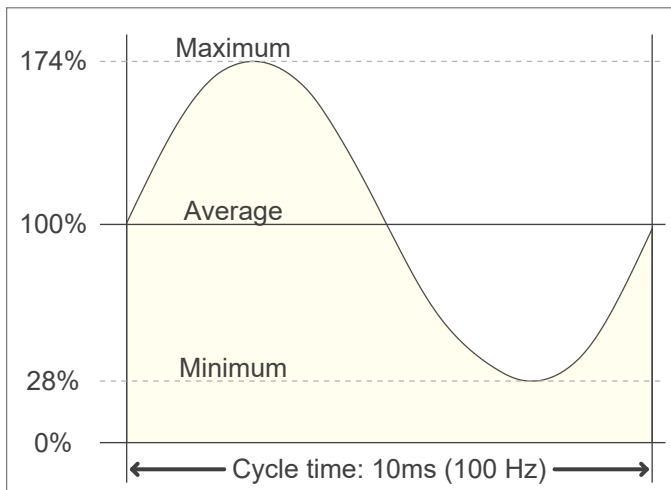
### TLA indices (re IEC TR 61547-1, IEC 61000-3-3 and IEC 61000-4-15)

PstLM value (F < 80 Hz): 0,13  
 SVM value (80 < F < 2000 Hz): 2,9

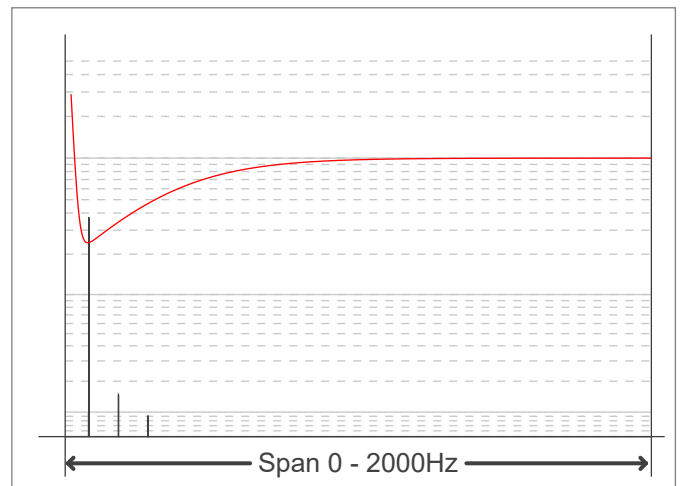
### Flicker indices according to Lighting Research Center (2015)

Perception metric, Assist Mp: 0,08

Flicker frame (frame of one flicker period in time domain)



Flicker FFT (flicker curve in frequency domain)



IEEE 1789 Frequency/modulation plot

