

Light efficiency:



Light quality:



Color temperature:

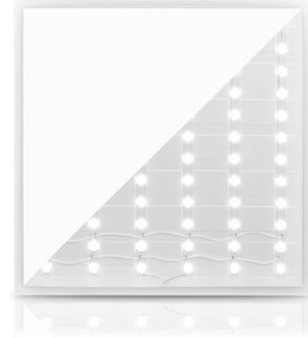


Output: 3895 lm

Peak: 1851 cd

Power: 24,1 W

PF: 0,95



Tracking number: [VT240916-008879](#)

Product name:

**802219**

Item number:

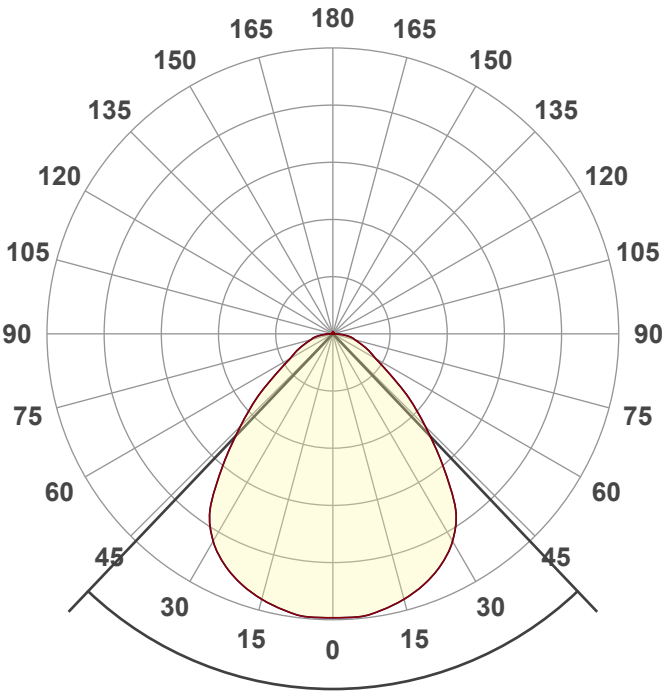
**802219**

Date and time:

**16-9-2024 11:27:24**

Description:

**BACK-LIT LED PANEEL | CUPID | 60X60CM | 25W**



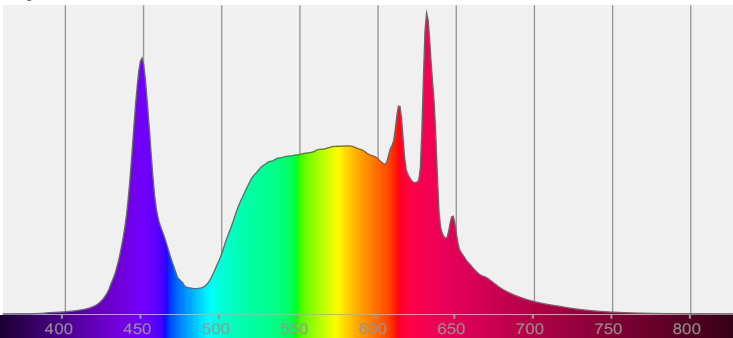
Beam angle

**87,1°**

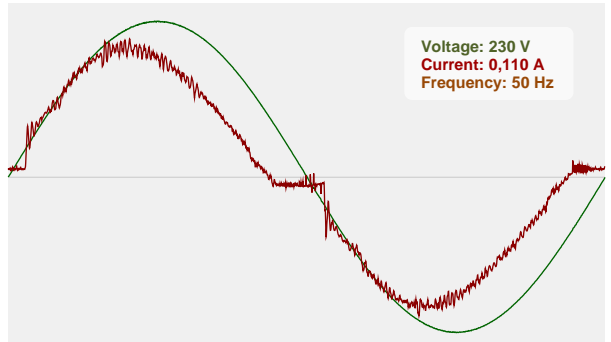


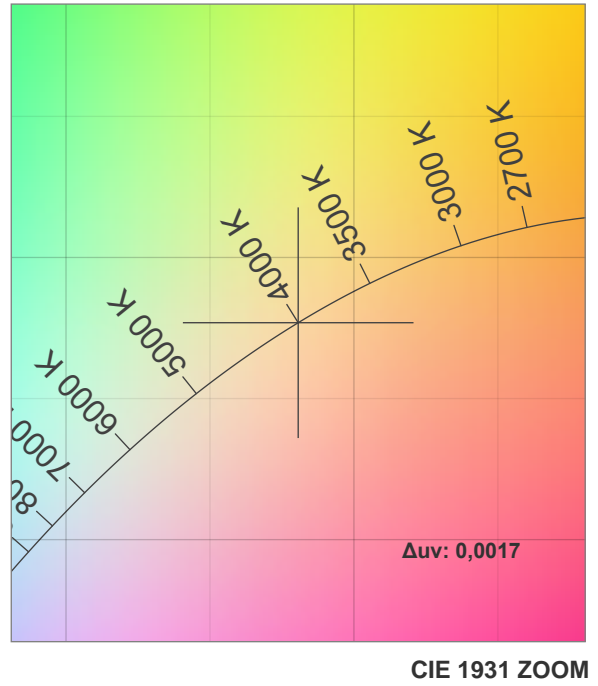
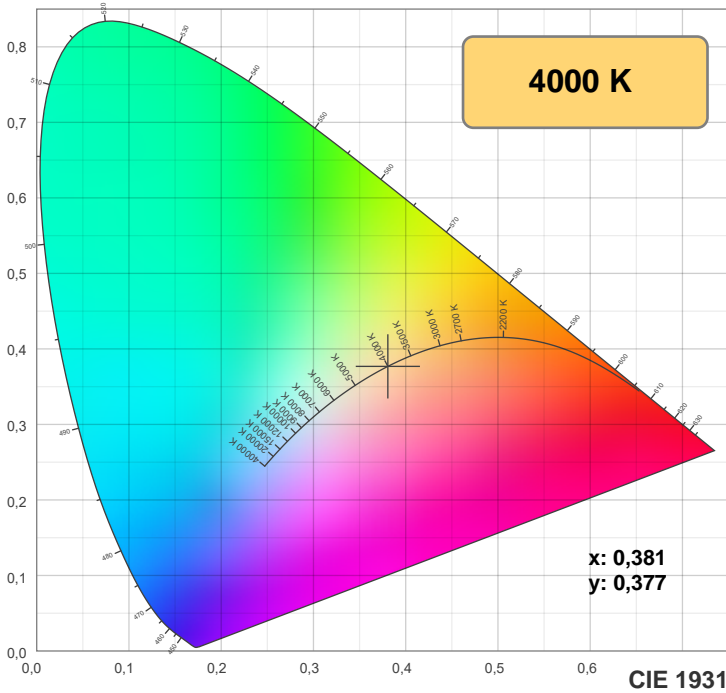
CIE 1931  
x: 0,381  
y: 0,377

Spectra



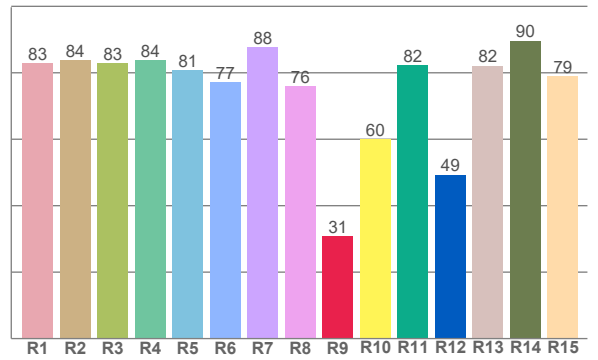
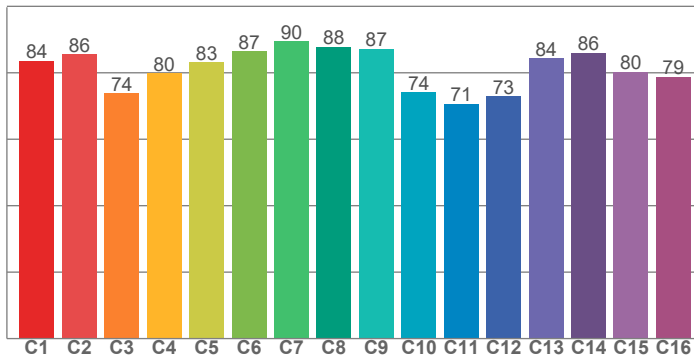
Power



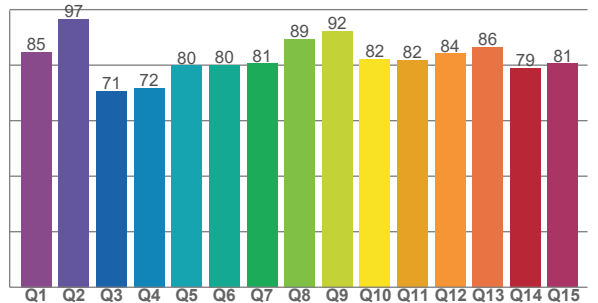


**TM-30: 81,3**

**CRI: 81,9 (R1-R8)**



**CQS: 81,5**



CRI R values, only R1-R8 are used to calculate final CRI value

R1	R2	R3	R4	R5	R6	R7	R8	R9	R10	R11	R12	R13	R14	R15
82,8	83,8	83,0	83,8	80,8	77,2	87,8	75,9	30,8	60,0	82,4	49,3	82,1	89,7	79,0

TM30 C values, 16 binned values out of total of 99 C values

C1	C2	C3	C4	C5	C6	C7	C8	C9	C10	C11	C12	C13	C14	C15	C16
83,7	85,5	73,9	79,9	83,2	86,5	89,5	87,9	87,2	74,1	70,7	72,9	84,4	86,0	80,3	78,8

CQS Q values

Q1	Q2	Q3	Q4	Q5	Q6	Q7	Q8	Q9	Q10	Q11	Q12	Q13	Q14	Q15
84,8	96,7	70,7	71,9	79,9	80,1	80,7	89,3	92,3	82,2	81,9	84,2	86,5	78,9	80,5

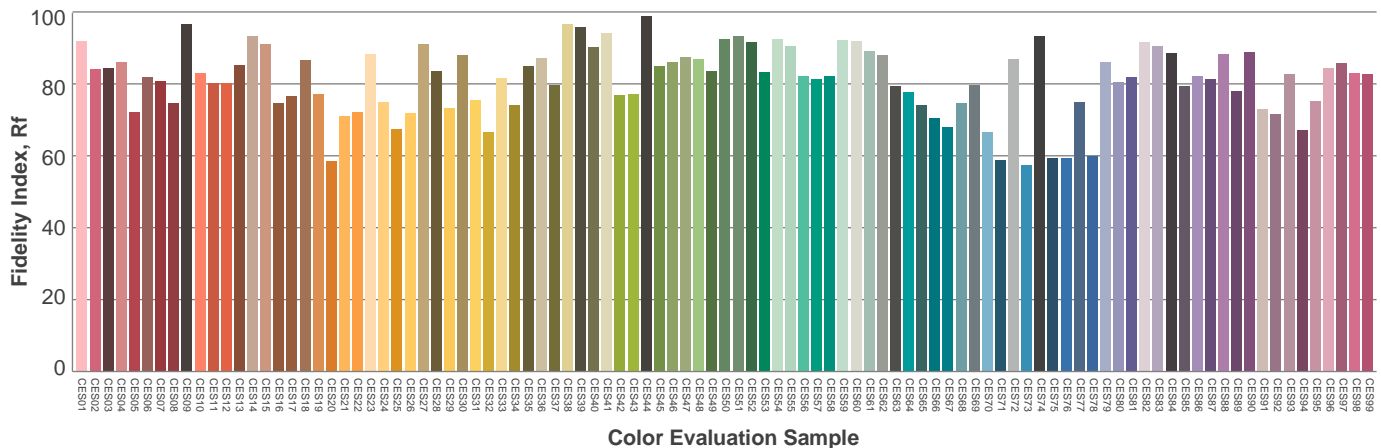
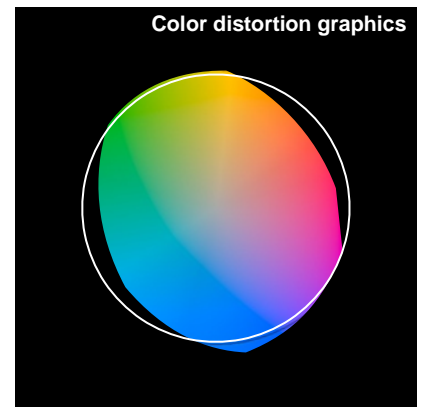
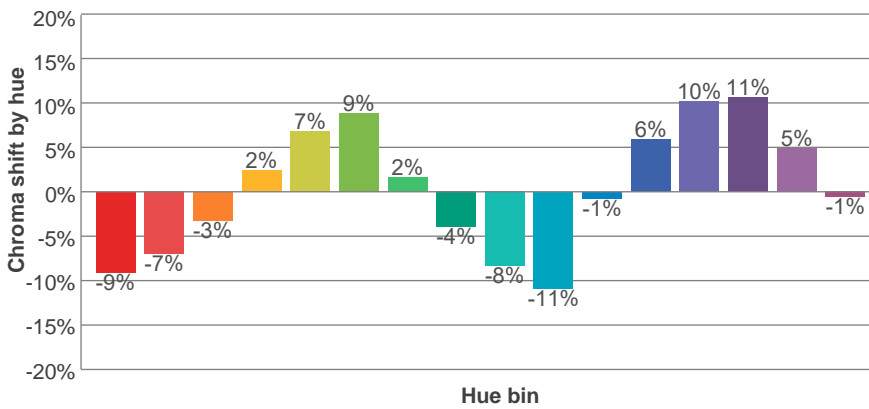
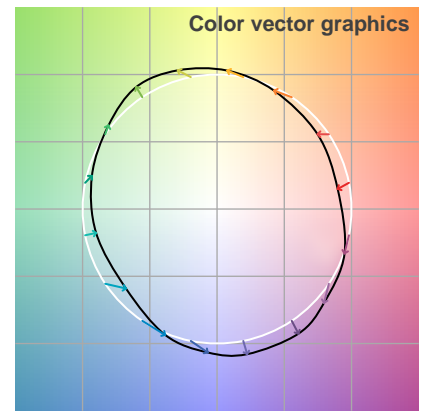
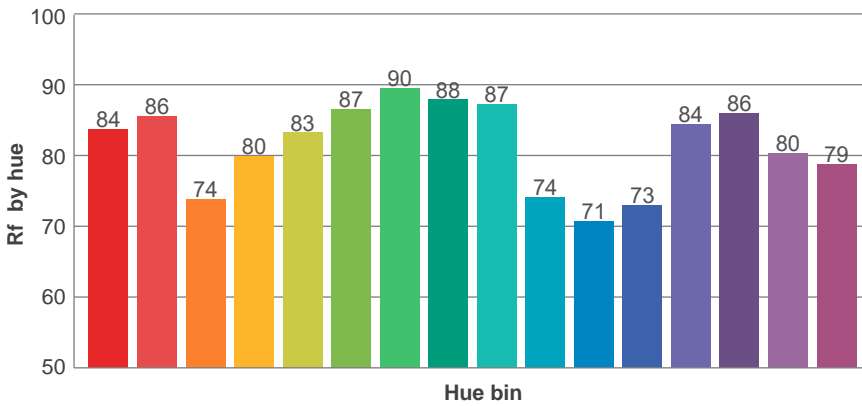
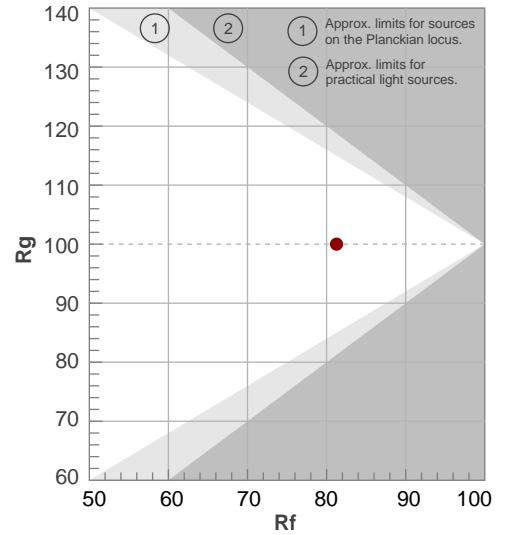
**Color parameters**

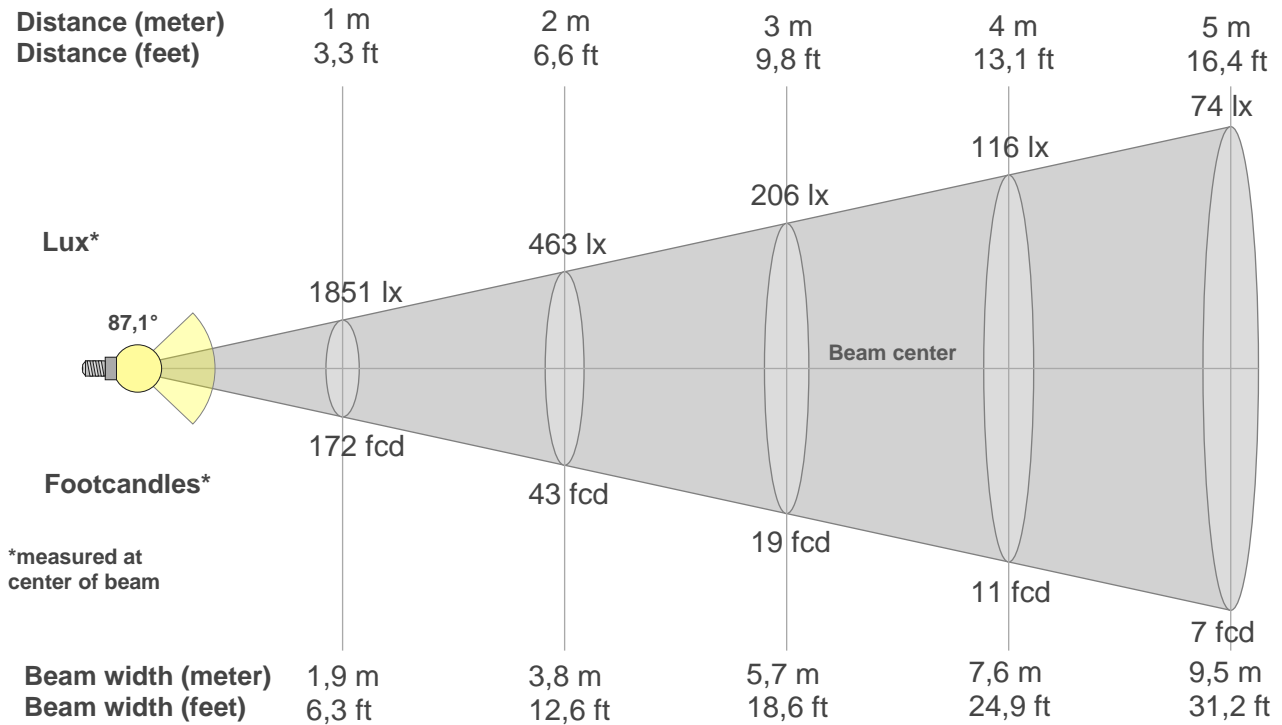
Color temperature	Color rendering index	Red component	Color fidelity	Color gamut	Color quality scale	Color coordinate cie 1931	Color coordinate cie 1931	Color coordinate	Color coordinate	Color diviation from black body
CCT	CRI	CRI R9	TM30 Rf	TM30 Rg	CQS	x	y	u	v	Δuv
4000 K	81,9	30,8	81,3	100,0	81,5	0,381	0,377	0,225	0,334	0,0017

**Rf 81,3**  
Fidelity index Rf

**Rg 100,0**  
Gamut index Rg

Hue Bin	R <sub>f</sub>	Shifts (%)	
		Chroma	Hue
1	84	-9%	-3%
2	86	-7%	5%
3	74	-3%	14%
4	80	2%	13%
5	83	7%	9%
6	87	9%	0%
7	90	2%	-7%
8	88	-4%	-6%
9	87	-8%	0%
10	74	-11%	12%
11	71	-1%	20%
12	73	6%	14%
13	84	10%	1%
14	86	11%	-1%
15	80	5%	-14%
16	79	-1%	-14%





**Beam intensities from 1-20m**

1m	2m	3m	4m	5m	6m	7m	8m	9m	10m	11m	12m	13m	14m	15m	16m	17m	18m	19m	20m
3,3ft	6,6ft	9,8ft	13,1ft	16,4ft	19,7ft	23ft	26,2ft	29,5ft	32,8ft	36,1ft	39,4ft	42,7ft	45,9ft	49,2ft	52,5ft	55,8ft	59,1ft	62,3ft	65,6ft
1851lx	463lx	206lx	116lx	74lx	51lx	38lx	29lx	23lx	19lx	15lx	13lx	11lx	9lx	8lx	7lx	6lx	6lx	5lx	5lx
172fcd	43fcd	19,1fcd	10,7fcd	6,9fcd	4,8fcd	3,5fcd	2,7fcd	2,1fcd	1,7fcd	1,4fcd	1,2fcd	1fcd	0,9fcd	0,8fcd	0,7fcd	0,6fcd	0,5fcd	0,5fcd	0,4fcd

**Intensities in 0° c-plane**

0°	5°	10°	15°	20°	25°	30°	35°	40°	45°	50°	55°	60°	65°	70°	75°	80°	85°	90°	95°
1851	1851	1827	1790	1737	1663	1559	1393	1111	851	642	447	321	258	196	148	117	62	13	5
100%	100%	99%	97%	94%	90%	84%	75%	60%	46%	35%	24%	17%	14%	11%	8%	6%	3%	1%	0%

**Intensities in 90° c-plane**

0°	5°	10°	15°	20°	25°	30°	35°	40°	45°	50°	55°	60°	65°	70°	75°	80°	85°	90°	95°
1851	1851	1827	1790	1737	1663	1559	1393	1111	851	642	447	321	258	196	148	117	62	13	5
100%	100%	99%	97%	94%	90%	84%	75%	60%	46%	35%	24%	17%	14%	11%	8%	6%	3%	1%	0%

**Intensities in 180° c-plane**

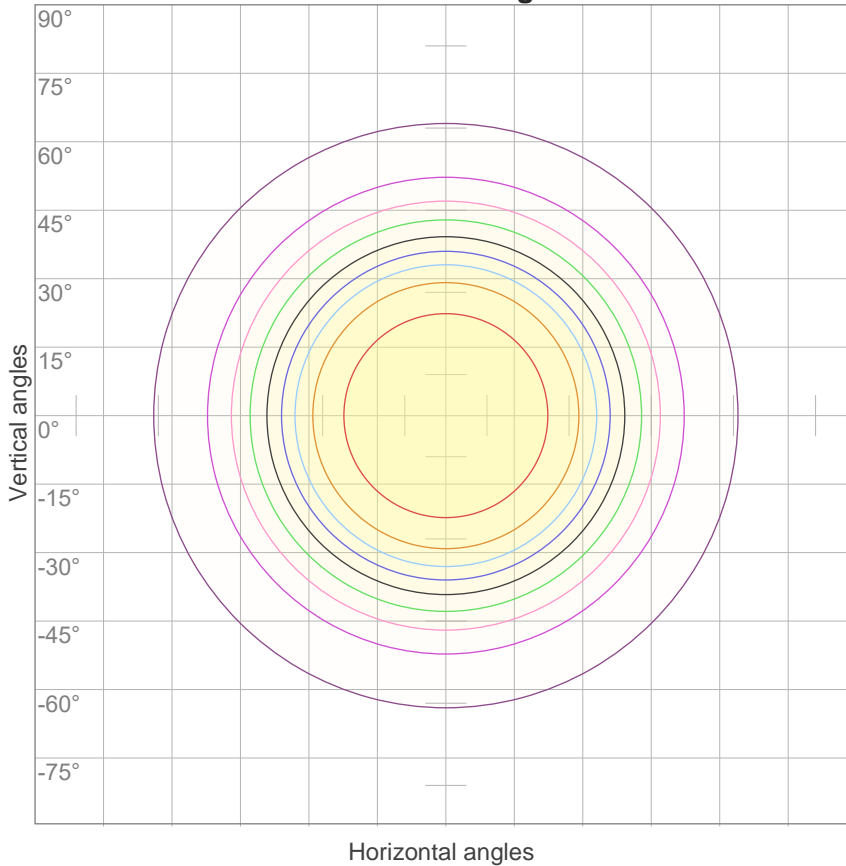
0°	5°	10°	15°	20°	25°	30°	35°	40°	45°	50°	55°	60°	65°	70°	75°	80°	85°	90°	95°
1851	1851	1827	1790	1737	1663	1559	1393	1111	851	642	447	321	258	196	148	117	62	13	5
100%	100%	99%	97%	94%	90%	84%	75%	60%	46%	35%	24%	17%	14%	11%	8%	6%	3%	1%	0%

**Intensities in 270° c-plane**

0°	5°	10°	15°	20°	25°	30°	35°	40°	45°	50°	55°	60°	65°	70°	75°	80°	85°	90°	95°
1851	1851	1827	1790	1737	1663	1559	1393	1111	851	642	447	321	258	196	148	117	62	13	5
100%	100%	99%	97%	94%	90%	84%	75%	60%	46%	35%	24%	17%	14%	11%	8%	6%	3%	1%	0%

Beam angle 50%	Field angle 10%	Cutoff angle 2,5%	Intensity ratio in 120° cone	Intensity ratio in 90° cone
87,1°	142,2°	173,2°	86,5%	68,2%

**iso-candela diagram**



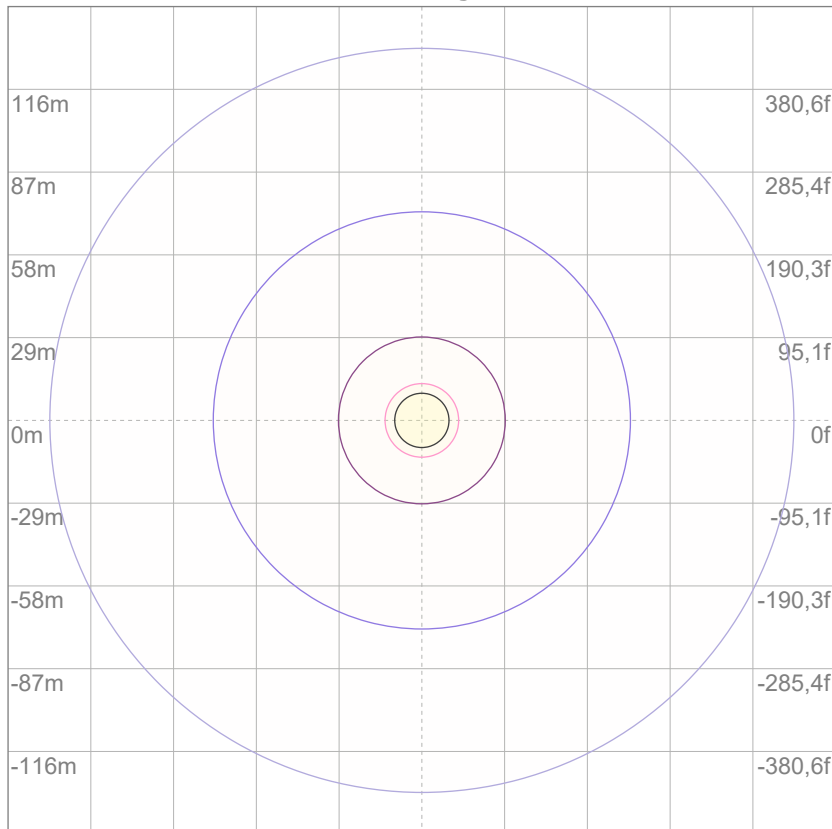
10%	185 cd
20%	370 cd
30%	555 cd
40%	740 cd
50%	925 cd
60%	1111 cd
70%	1296 cd
80%	1481 cd
90%	1666 cd

Conditions:

Number of c-planes: 12

Candela at center: 1851 cd

**iso-lux diagram**



3%	0,555 lx
5%	0,925 lx
10%	1,85 lx
30%	5,55 lx
50%	9,25 lx

Conditions:

Number of c-planes: 12

Lux at center: 18,5 lx

*Lux distribution on a surface when lamp is mounted at 10 meters from the surface.*

**Glare evaluation according to UGR**

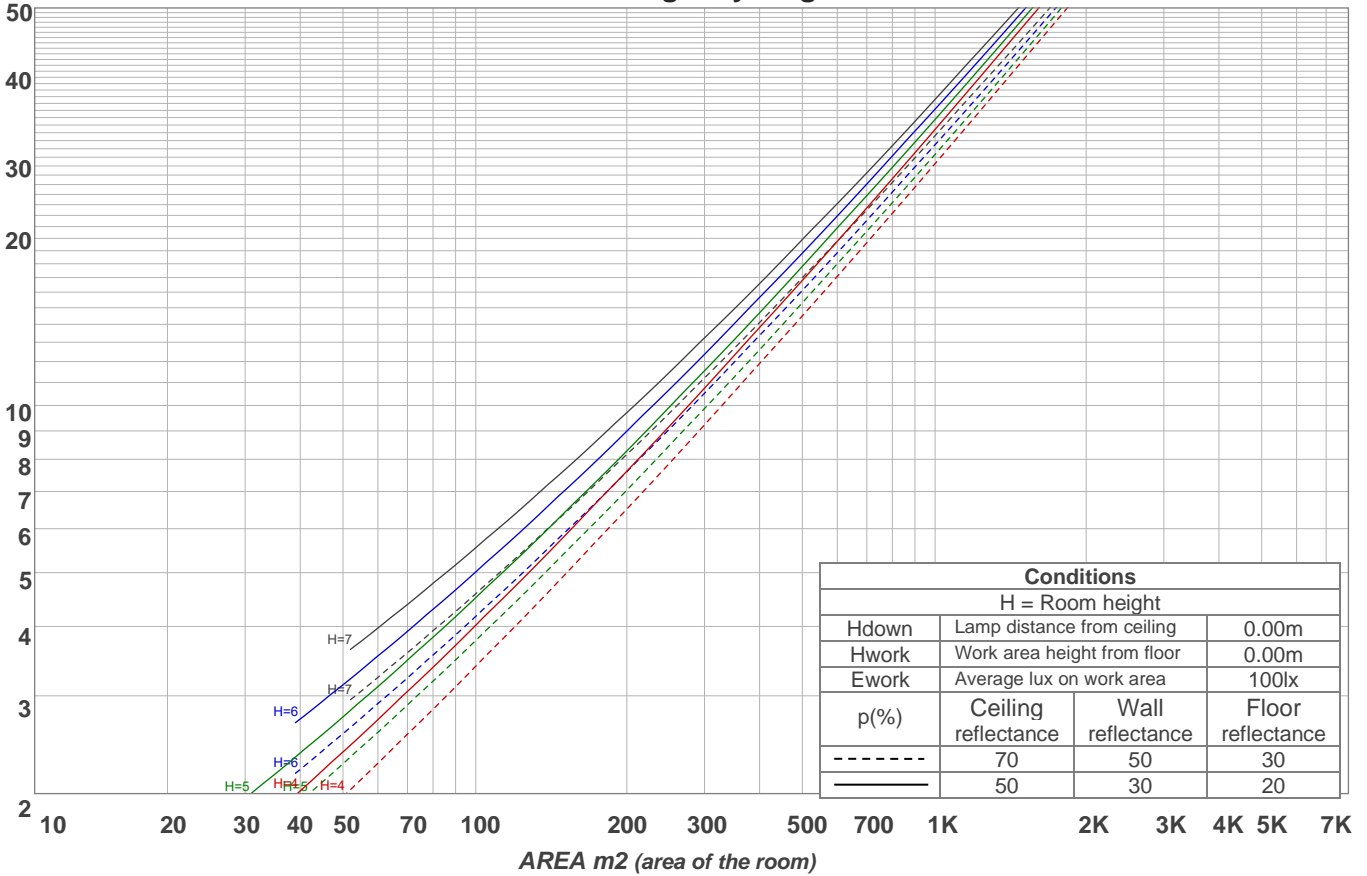
p Ceiling		70	70	50	50	30	70	70	50	50	30
p Walls		50	30	50	30	30	50	30	50	30	30
p Floor		20	20	20	20	20	20	20	20	20	20
Room size X Y		Viewing direction at right angles to lamp axis					Viewing direction parallel to lamp axis				
2H	2H	15,1	16,2	15,3	16,5	16,7	15,1	16,2	15,3	16,5	16,7
	3H	15,9	17,0	16,3	17,3	17,5	15,9	17,0	16,3	17,3	17,5
	4H	16,3	17,4	16,8	17,7	17,9	16,3	17,4	16,8	17,7	17,9
	6H	16,9	17,8	17,2	18,1	18,5	16,9	17,8	17,2	18,1	18,5
	8H	17,1	18,0	17,5	18,3	18,7	17,1	18,0	17,5	18,3	18,7
	12H	17,3	18,1	17,6	18,5	18,9	17,3	18,1	17,6	18,5	18,9
4H	2H	15,3	16,4	15,8	16,7	16,9	15,3	16,4	15,8	16,7	16,9
	3H	16,5	17,3	16,9	17,7	18,2	16,5	17,3	16,9	17,7	18,2
	4H	17,0	17,8	17,5	18,2	18,8	17,0	17,8	17,5	18,2	18,8
	6H	17,7	18,5	18,2	18,8	19,2	17,7	18,5	18,2	18,8	19,2
	8H	18,0	18,7	18,5	19,1	19,5	18,0	18,7	18,5	19,1	19,5
	12H	18,2	18,8	18,7	19,2	19,7	18,2	18,8	18,7	19,2	19,7
8H	4H	17,3	18,0	17,8	18,3	18,7	17,3	18,0	17,8	18,3	18,7
	6H	18,2	18,7	18,7	19,2	19,7	18,2	18,7	18,7	19,2	19,7
	8H	18,6	19,0	19,1	19,6	20,2	18,6	19,0	19,1	19,6	20,2
	12H	19,0	19,3	19,5	19,8	20,5	19,0	19,3	19,5	19,8	20,5
12H	4H	17,3	17,9	17,8	18,3	18,8	17,3	17,9	17,8	18,3	18,8
	6H	18,3	18,7	18,8	19,3	19,9	18,3	18,7	18,8	19,3	19,9
	8H	18,7	19,1	19,3	19,6	20,3	18,7	19,1	19,3	19,6	20,3
Variation of the observer position for the luminaire distance S											
S = 1.0H		0,2 / -0,3					0,2 / -0,3				
S = 1.5H		0,5 / -0,5					0,5 / -0,5				
S = 2.0H		1,1 / -0,8					1,1 / -0,8				
CIE 117-1995. Corrected glare indices referring to 3895 lm total luminous flux											

**Coefficients of Utilization**

Ceiling reflectance	80				70				50			30			10			0			
Wall reflectance	70	50	30	10	70	50	30	10	50	30	10	50	30	10	50	30	10	0			
Floor reflectance	20	20	20	20	20	20	20	20	20	20	20	20	20	20	20	20	20	20	20	20	0
<b>RCR</b>	<b>(RCR: Room Cavity Ratio)</b>																				
	Room Values are expressed as percentage of Lumens delivered to the task surface																				
0	119	119	119	119	116	116	116	116	111	111	111	106	106	106	101	101	101	99			
1	110	106	102	99	107	103	100	97	99	96	94	95	93	91	91	90	88	86			
2	101	94	88	83	99	92	87	82	89	84	80	85	82	78	82	79	76	74			
3	94	84	77	72	91	83	76	71	80	74	69	77	72	68	74	70	67	65			
4	87	76	68	62	85	75	67	62	72	66	61	70	64	60	68	63	59	57			
5	81	69	61	55	78	68	60	55	66	59	54	64	58	53	62	57	53	51			
6	75	63	55	49	73	62	54	49	60	53	48	58	52	48	57	51	47	45			
7	70	58	50	44	68	57	49	44	55	48	43	54	48	43	52	47	43	41			
8	65	53	45	40	64	52	45	40	51	44	39	50	43	39	48	43	39	37			
9	61	49	41	36	60	48	41	36	47	40	36	46	40	36	45	39	35	34			
10	58	45	38	33	56	45	38	33	44	37	33	43	37	33	42	36	32	31			

LAMPS (number of lamps)

**Luminaire budgetary diagram**



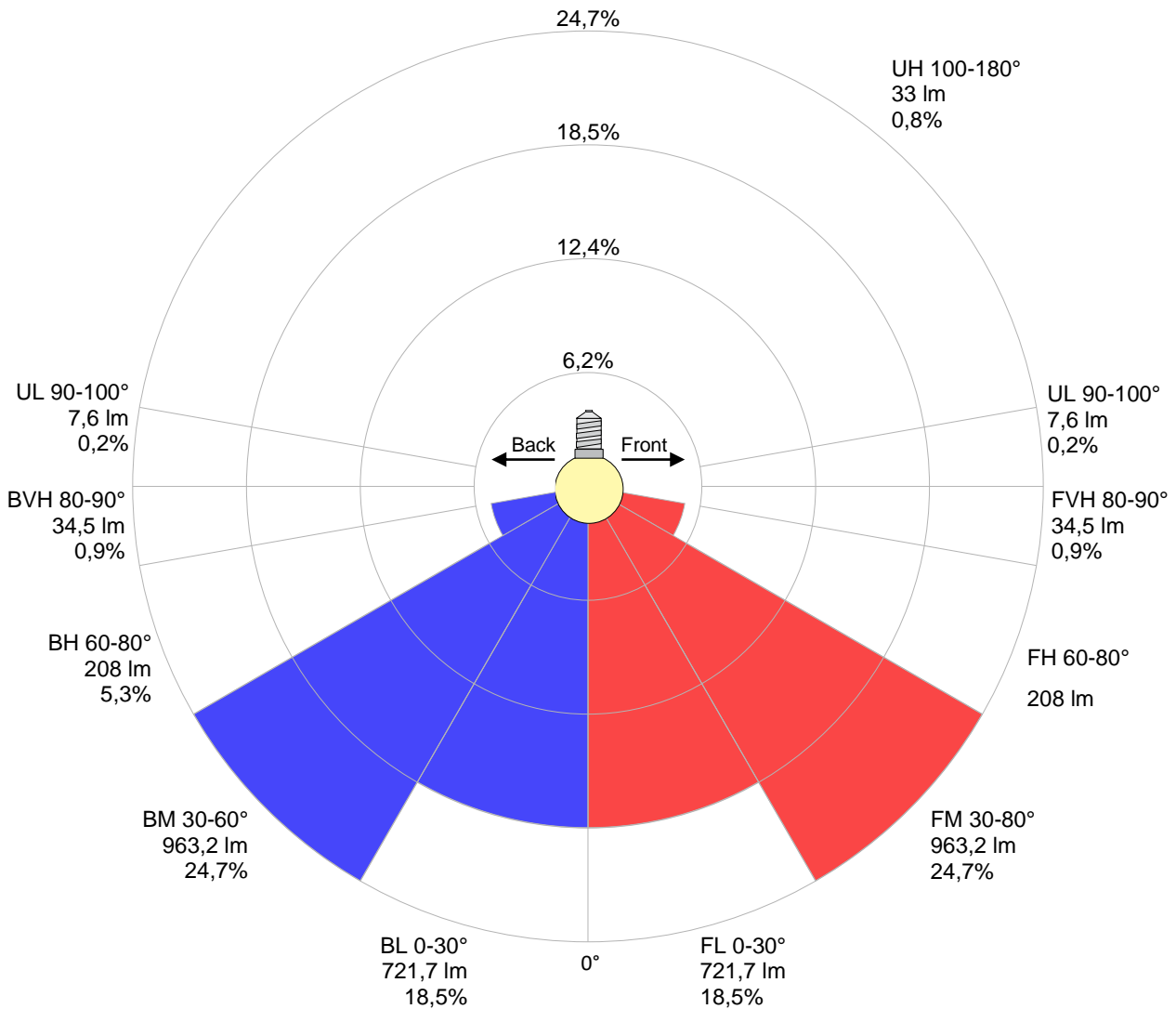
**Zonal Lumen Summary**

0°-10°	10°-20°	20°-30°	30°-40°	40°-50°	50°-60°	60°-70°	70°-80°	80°-90°
{LUM0-10}	505 lm	763 lm	850 lm	663 lm	413 lm	255 lm	161 lm	68,9 lm
90°-100°	100°-110°	110°-120°	120°-130°	130°-140°	140°-150°	150°-160°	160°-170°	170°-180°
7,59 lm	5,39 lm	5,45 lm	5,81 lm	5,26 lm	4,66 lm	3,50 lm	2,17 lm	0,750 lm

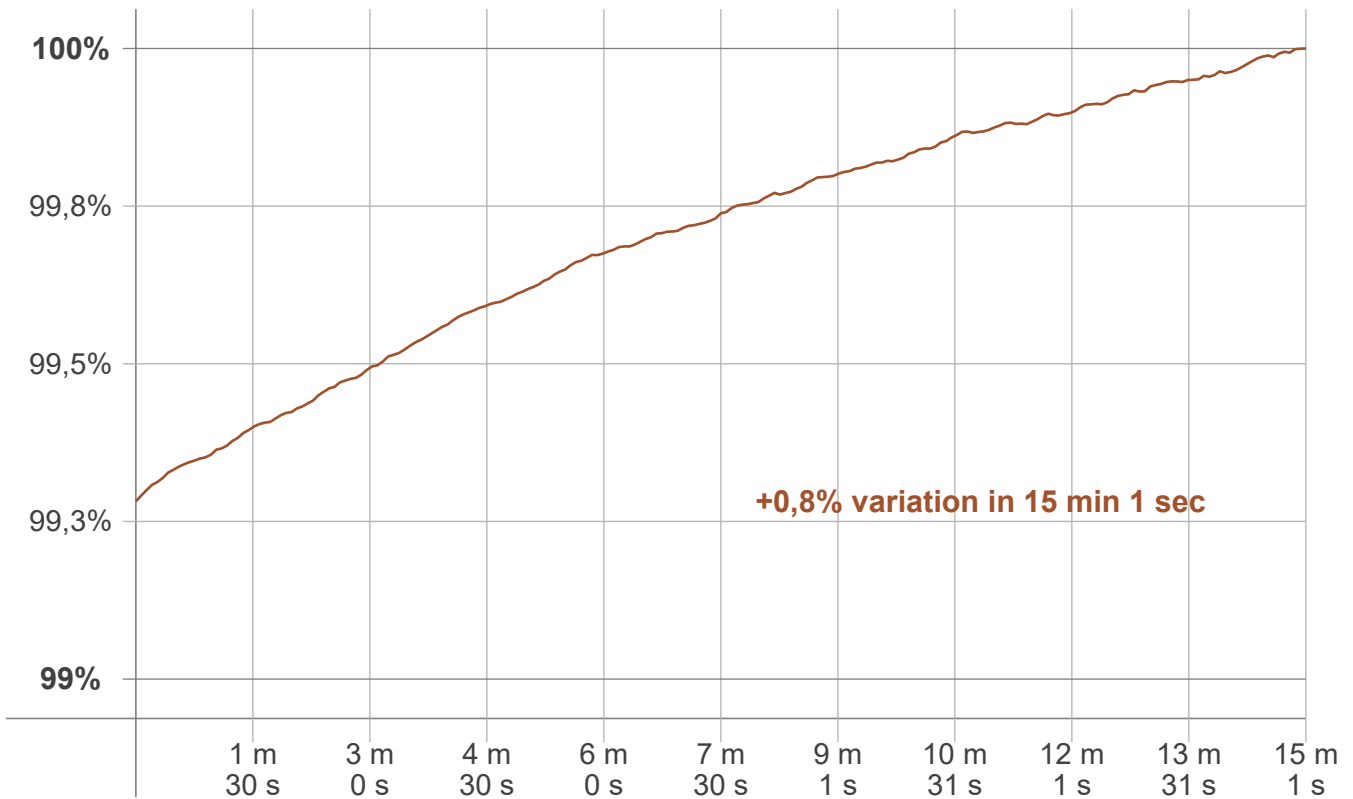
LCS table

BUG rating:	B2 U2 G1	
<b>Forward light</b>	Lumens	Lumens %
Low(0-30):	721,7	18,5%
Medium(30-60):	963,2	24,7%
High(60-80):	208	5,3%
Very high(80-90):	34,5	0,9%
<b>Back light</b>		
Low(0-30):	721,7	18,5%
Medium(30-60):	963,2	24,7%
High(60-80):	208	5,3%
Very high(80-90):	34,5	0,9%
<b>Uplight</b>		
Low(90-100):	7,6	0,2%
High(100-180):	33	0,8%

LCS graph



**Warmup curve**



**Warmup result**

<b>Warmup time:</b>	<b>Lamp stabilized in 15 min 1 sec</b>
<b>Warmup variation</b>	<b>+0,8%</b>

**Warmup conditions**

<b>Stable period:</b>	<b>15 min</b>
<b>Stable change max:</b>	<b>2,0%</b>
<b>Minimum time:</b>	<b>15 min</b>

**Color temperature change**

CCT start	CCT change	CCT end
3996 K	+4 K	4000 K

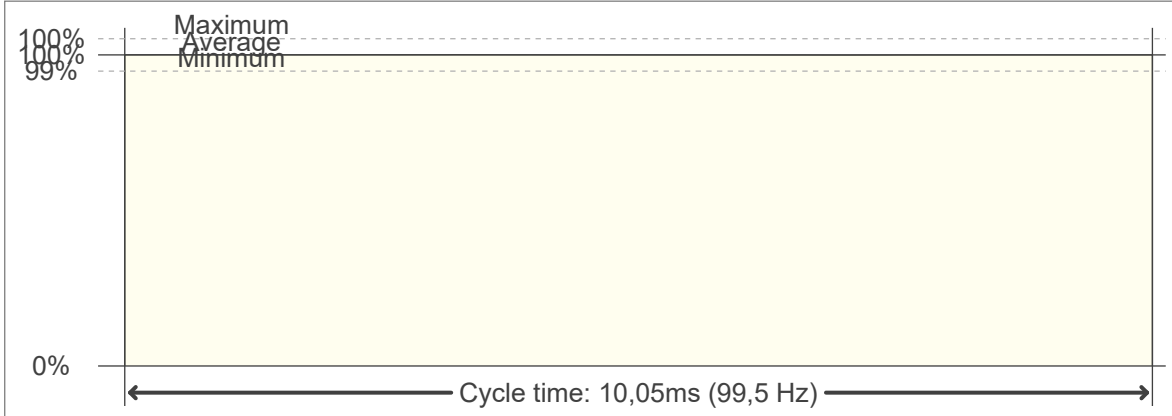
**Output change**

Output start	Output change	Output end
3867 lm	+28 lm	3895 lm

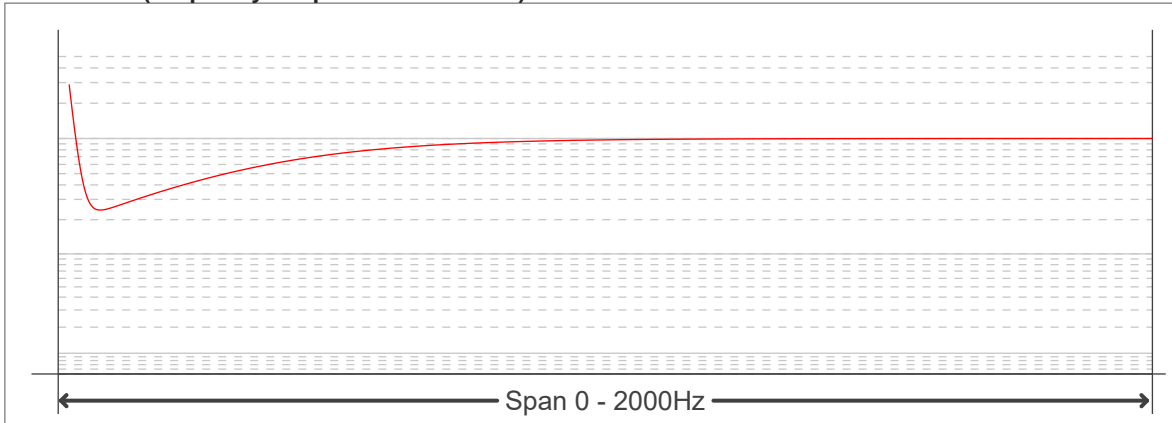
**Flicker curve (complete sampled flicker signal)**



**Flicker frame (frame of one flicker period)**



**Flicker FFT (frequency scope of flicker curve)**



**Flicker results:**

Flicker frequency:		99,5 Hz	
Flicker index:	0	JA8/10 40Hz	0,02 %
Flicker percentage:	0,12 %	JA8/10 90Hz	0,03 %
SVM: (Visual flicker)	0	JA8/10 200Hz	0,08 %
PstLM	0,01	JA8/10 400Hz	0,1 %
Mp	0,01	JA8/10 1000Hz	0,11 %

**Flicker conditions:**

Sample rate:	20000 samples/second
--------------	----------------------