

Light efficiency:



Light quality:



Color temperature:



Output: 3036 lm

Peak: 971 cd

Power: 33,1 W

PF: 0,96



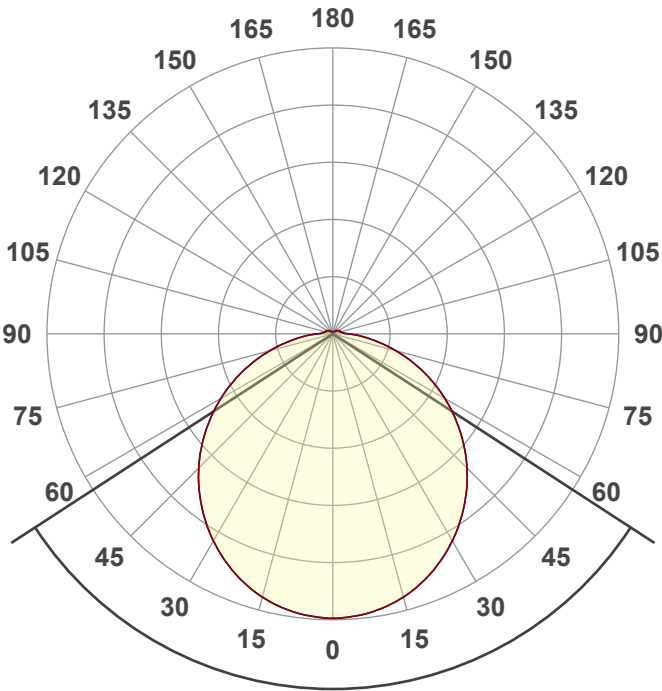
Tracking number: [VT241001-004388](https://www.visosystems.com/VT241001-004388)

Product name:
804558-3000K

Item number:
804558-3000K

Date and time:
1-10-2024 11:28:03

Description:
**LED FRAME LED PANEEL | EDGE LIT |
120x30 | 32W | UGR<23 | CCT SWITCH**

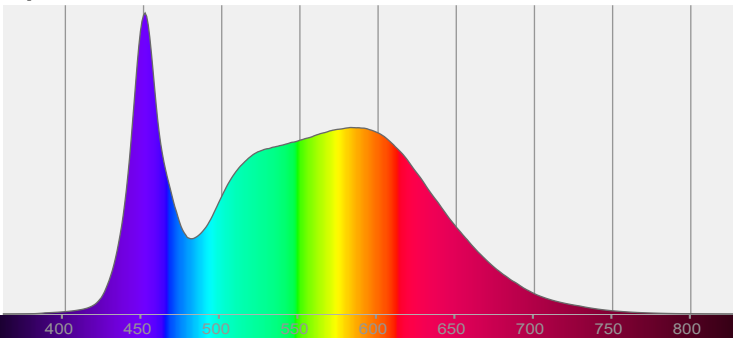


Beam angle **113,9°**

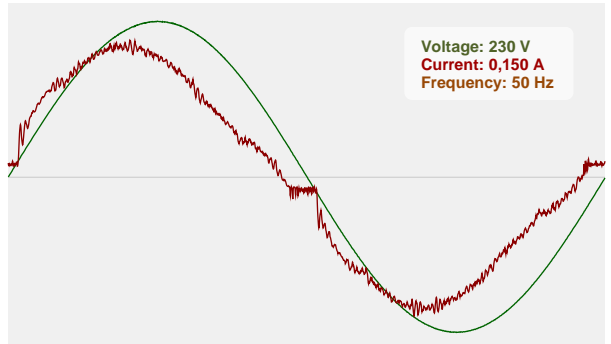


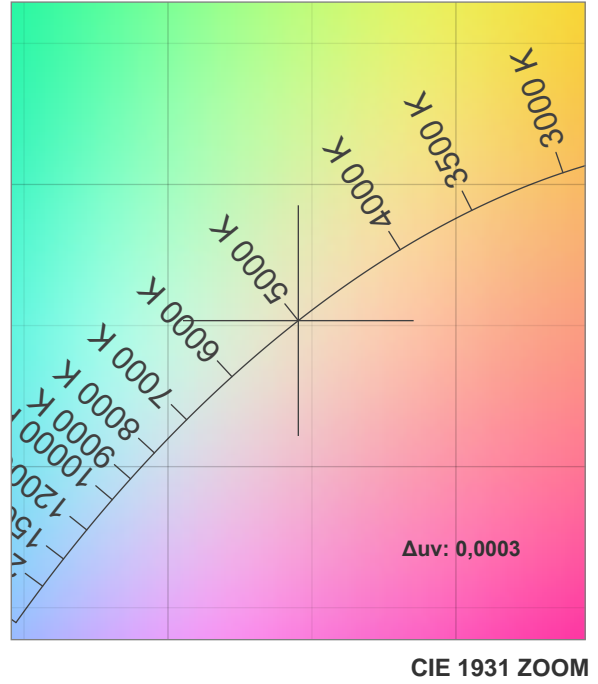
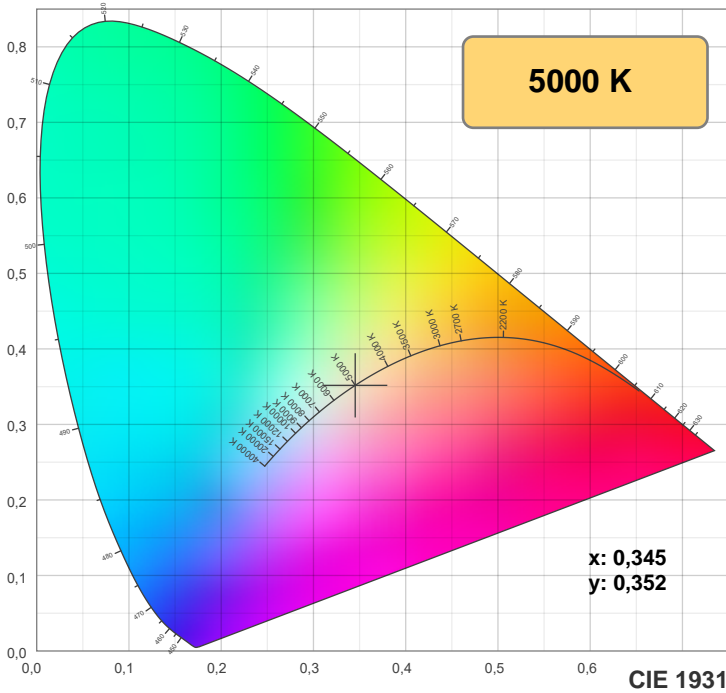
CIE 1931
x: 0,345
y: 0,352

Spectra



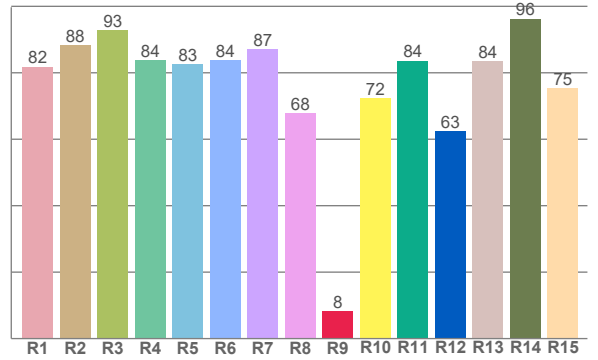
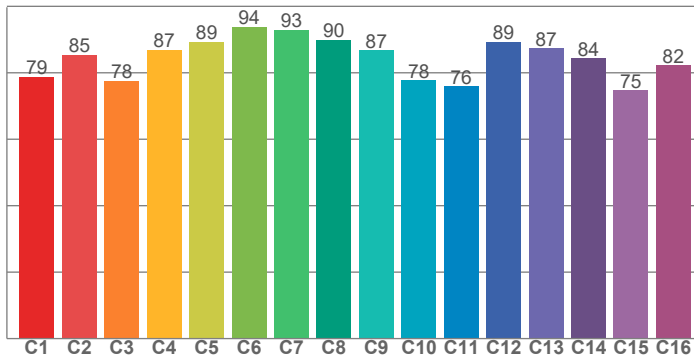
Power



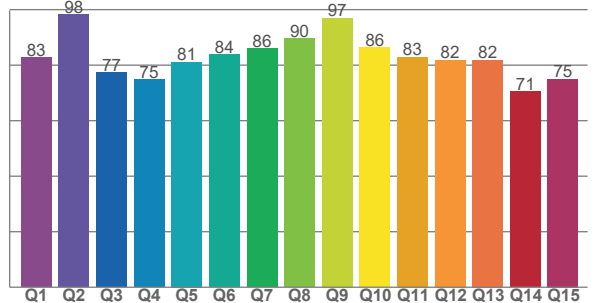


TM-30: 84,3

CRI: 83,5 (R1-R8)



CQS: 81,7



CRI R values, only R1-R8 are used to calculate final CRI value

R1	R2	R3	R4	R5	R6	R7	R8	R9	R10	R11	R12	R13	R14	R15
81,9	88,3	92,8	83,9	82,5	83,8	87,1	67,7	8,3	72,2	83,6	62,5	83,6	96,3	75,4

TM30 C values, 16 binned values out of total of 99 C values

C1	C2	C3	C4	C5	C6	C7	C8	C9	C10	C11	C12	C13	C14	C15	C16
78,7	85,4	77,6	87,0	89,4	93,9	92,9	89,9	86,7	77,7	76,0	89,4	87,3	84,3	74,7	82,2

CQS Q values

Q1	Q2	Q3	Q4	Q5	Q6	Q7	Q8	Q9	Q10	Q11	Q12	Q13	Q14	Q15
82,8	98,2	77,3	74,9	81,1	83,8	86,0	89,6	96,9	86,4	83,0	81,9	81,8	70,5	75,1

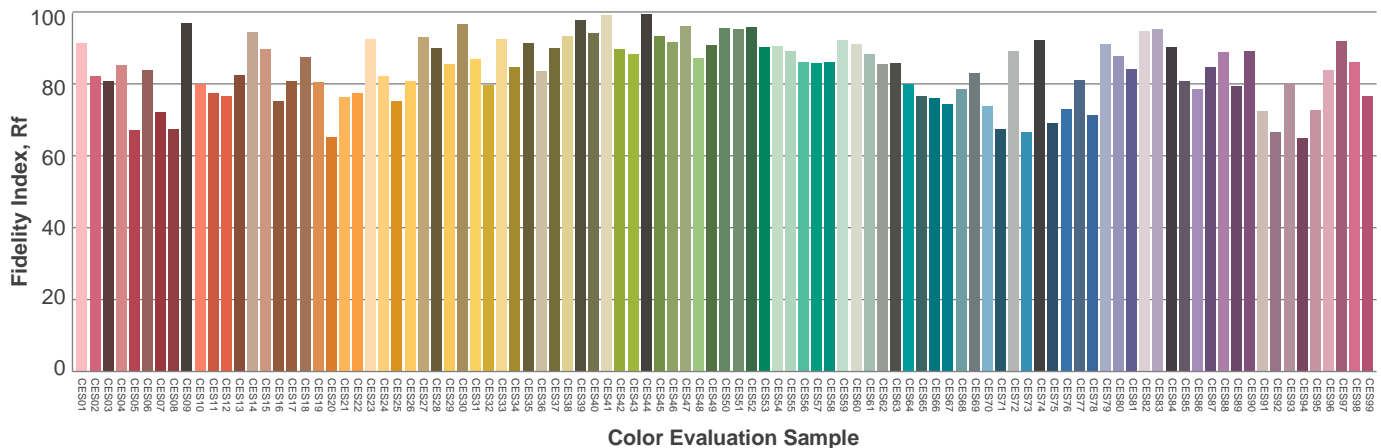
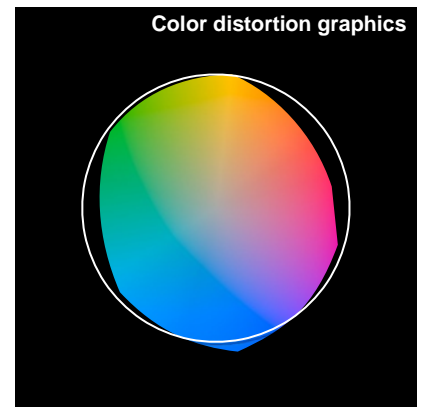
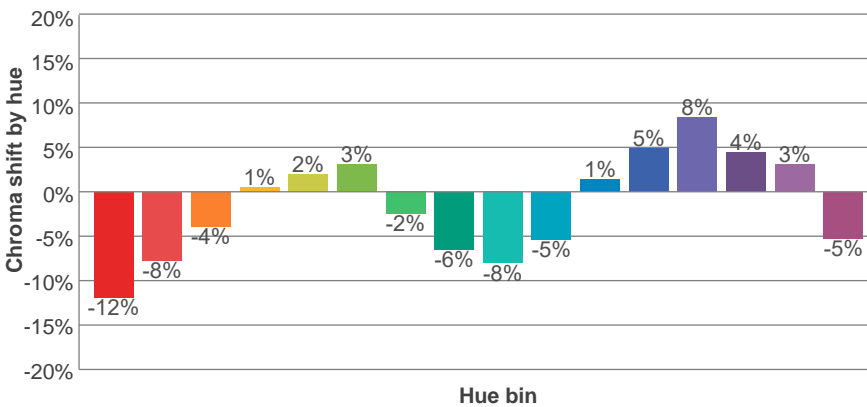
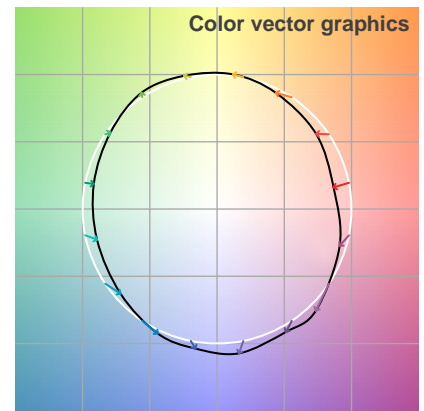
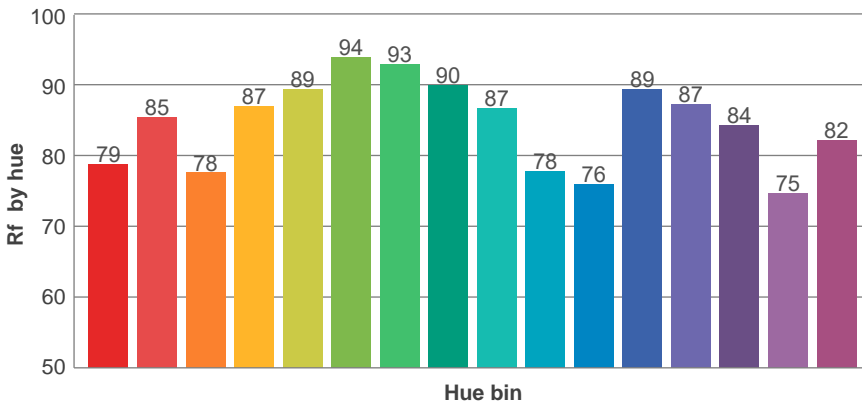
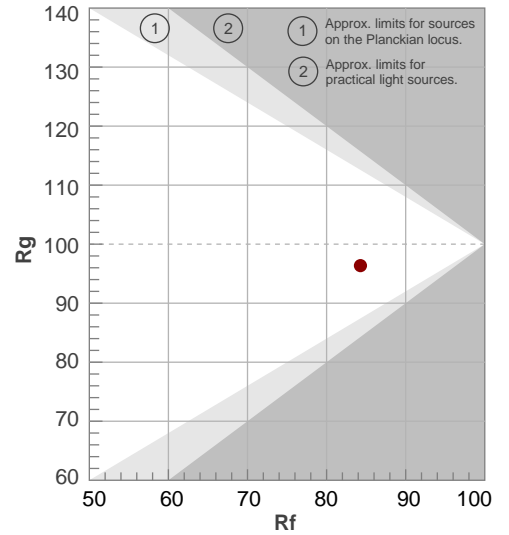
Color parameters

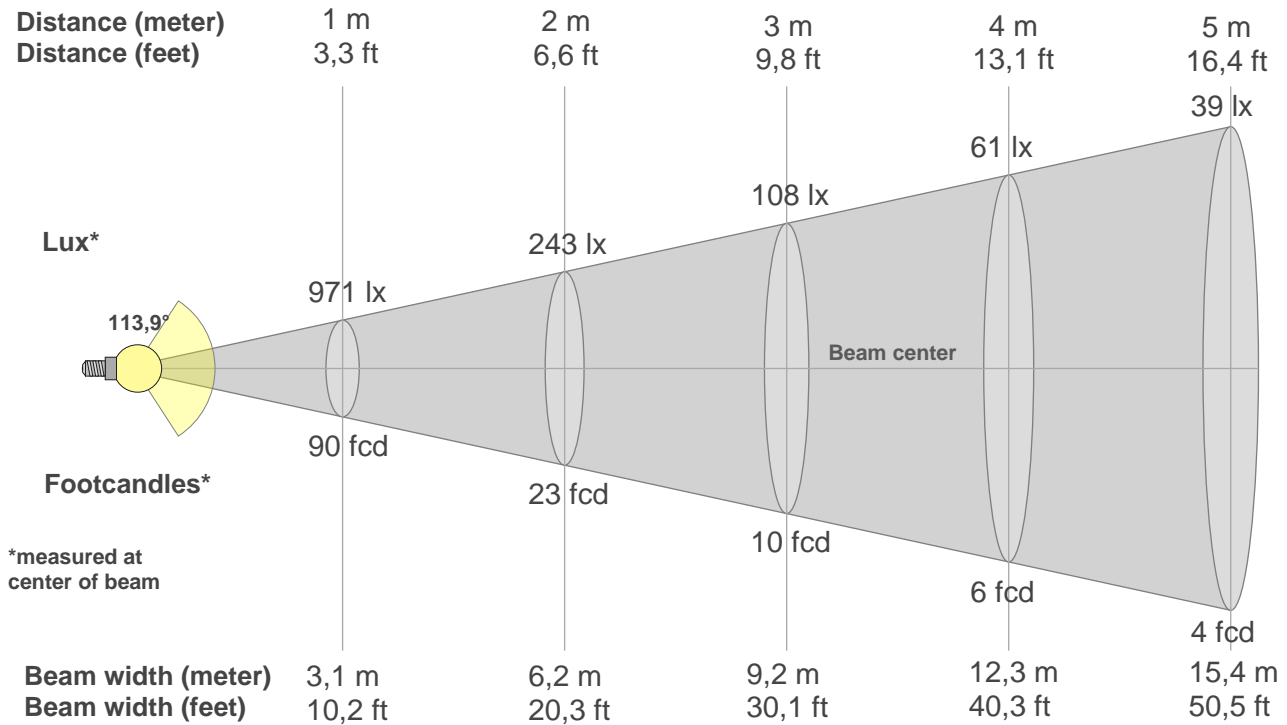
Color temperature	Color rendering index	Red component	Color fidelity	Color gamut	Color quality scale	Color coordinate cie 1931	Color coordinate cie 1931	Color coordinate	Color coordinate	Color deviation from black body
CCT	CRI	CRI R9	TM30 Rf	TM30 Rg	CQS	x	y	u	v	Δuv
5000 K	83,5	8,3	84,3	96,4	81,7	0,345	0,352	0,211	0,323	0,0003

Rf 84,3
Fidelity index Rf

Rg 96,4
Gamut index Rg

Hue Bin	R _f	Shifts (%)	
		Chroma	Hue
1	79	-12%	-1%
2	85	-8%	6%
3	78	-4%	12%
4	87	1%	8%
5	89	2%	5%
6	94	3%	-1%
7	93	-2%	-3%
8	90	-6%	0%
9	87	-8%	5%
10	78	-5%	12%
11	76	1%	15%
12	89	5%	5%
13	87	8%	-5%
14	84	4%	-8%
15	75	3%	-22%
16	82	-5%	-9%





Beam intensities from 1-20m

1m	2m	3m	4m	5m	6m	7m	8m	9m	10m	11m	12m	13m	14m	15m	16m	17m	18m	19m	20m
3,3ft	6,6ft	9,8ft	13,1ft	16,4ft	19,7ft	23ft	26,2ft	29,5ft	32,8ft	36,1ft	39,4ft	42,7ft	45,9ft	49,2ft	52,5ft	55,8ft	59,1ft	62,3ft	65,6ft
971lx	243lx	108lx	61lx	39lx	27lx	20lx	15lx	12lx	10lx	8lx	7lx	6lx	5lx	4lx	4lx	3lx	3lx	3lx	2lx
90,2fcd	22,6fcd	10fcd	5,6fcd	3,6fcd	2,5fcd	1,8fcd	1,4fcd	1,1fcd	0,9fcd	0,7fcd	0,6fcd	0,5fcd	0,5fcd	0,4fcd	0,4fcd	0,3fcd	0,3fcd	0,2fcd	0,2fcd

Intensities in 0° c-plane

0°	5°	10°	15°	20°	25°	30°	35°	40°	45°	50°	55°	60°	65°	70°	75°	80°	85°	90°	95°
971	966	953	930	900	861	816	765	709	648	582	513	442	369	296	224	157	101	57	37
100%	99%	98%	96%	93%	89%	84%	79%	73%	67%	60%	53%	46%	38%	30%	23%	16%	10%	6%	4%

Intensities in 90° c-plane

0°	5°	10°	15°	20°	25°	30°	35°	40°	45°	50°	55°	60°	65°	70°	75°	80°	85°	90°	95°
971	966	953	930	900	861	816	765	709	648	582	513	442	369	296	224	157	101	57	37
100%	99%	98%	96%	93%	89%	84%	79%	73%	67%	60%	53%	46%	38%	30%	23%	16%	10%	6%	4%

Intensities in 180° c-plane

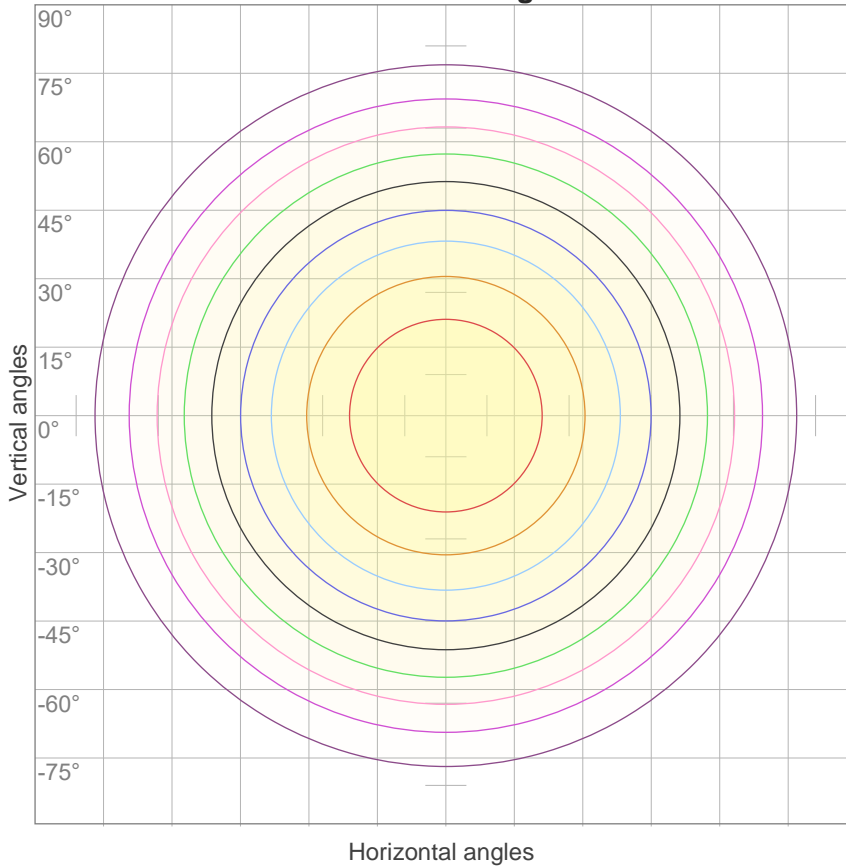
0°	5°	10°	15°	20°	25°	30°	35°	40°	45°	50°	55°	60°	65°	70°	75°	80°	85°	90°	95°
971	966	953	930	900	861	816	765	709	648	582	513	442	369	296	224	157	101	57	37
100%	99%	98%	96%	93%	89%	84%	79%	73%	67%	60%	53%	46%	38%	30%	23%	16%	10%	6%	4%

Intensities in 270° c-plane

0°	5°	10°	15°	20°	25°	30°	35°	40°	45°	50°	55°	60°	65°	70°	75°	80°	85°	90°	95°
971	966	953	930	900	861	816	765	709	648	582	513	442	369	296	224	157	101	57	37
100%	99%	98%	96%	93%	89%	84%	79%	73%	67%	60%	53%	46%	38%	30%	23%	16%	10%	6%	4%

Beam angle 50%	Field angle 10%	Cutoff angle 2,5%	Intensity ratio in 120° cone	Intensity ratio in 90° cone
113,9°	170,8°	230,5°	72,2%	48,8%

iso-candela diagram



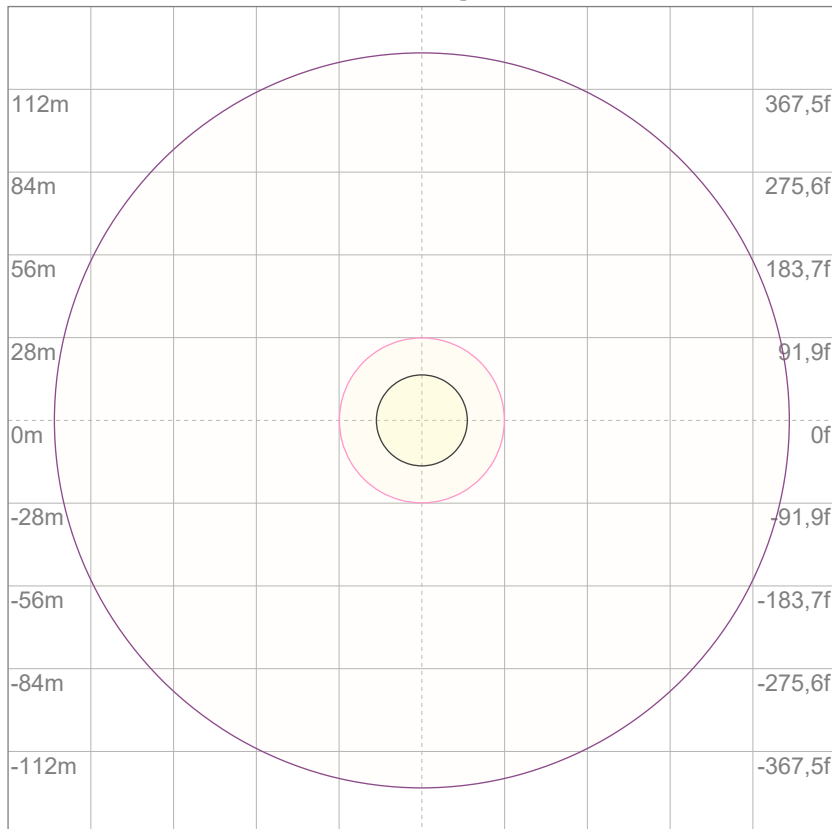
10%	97 cd
20%	194 cd
30%	291 cd
40%	388 cd
50%	486 cd
60%	583 cd
70%	680 cd
80%	777 cd
90%	874 cd

Conditions:

Number of c-planes: 12

Candela at center: 971 cd

iso-lux diagram



Mounting height: 10 meters (33 feet)

3%	0,291 lx
5%	0,486 lx
10%	0,971 lx
30%	2,91 lx
50%	4,86 lx

Conditions:

Number of c-planes: 12

Lux at center: 9,71 lx

Lux distribution on a surface when lamp is mounted at 10 meters from the surface.

Glare evaluation according to UGR

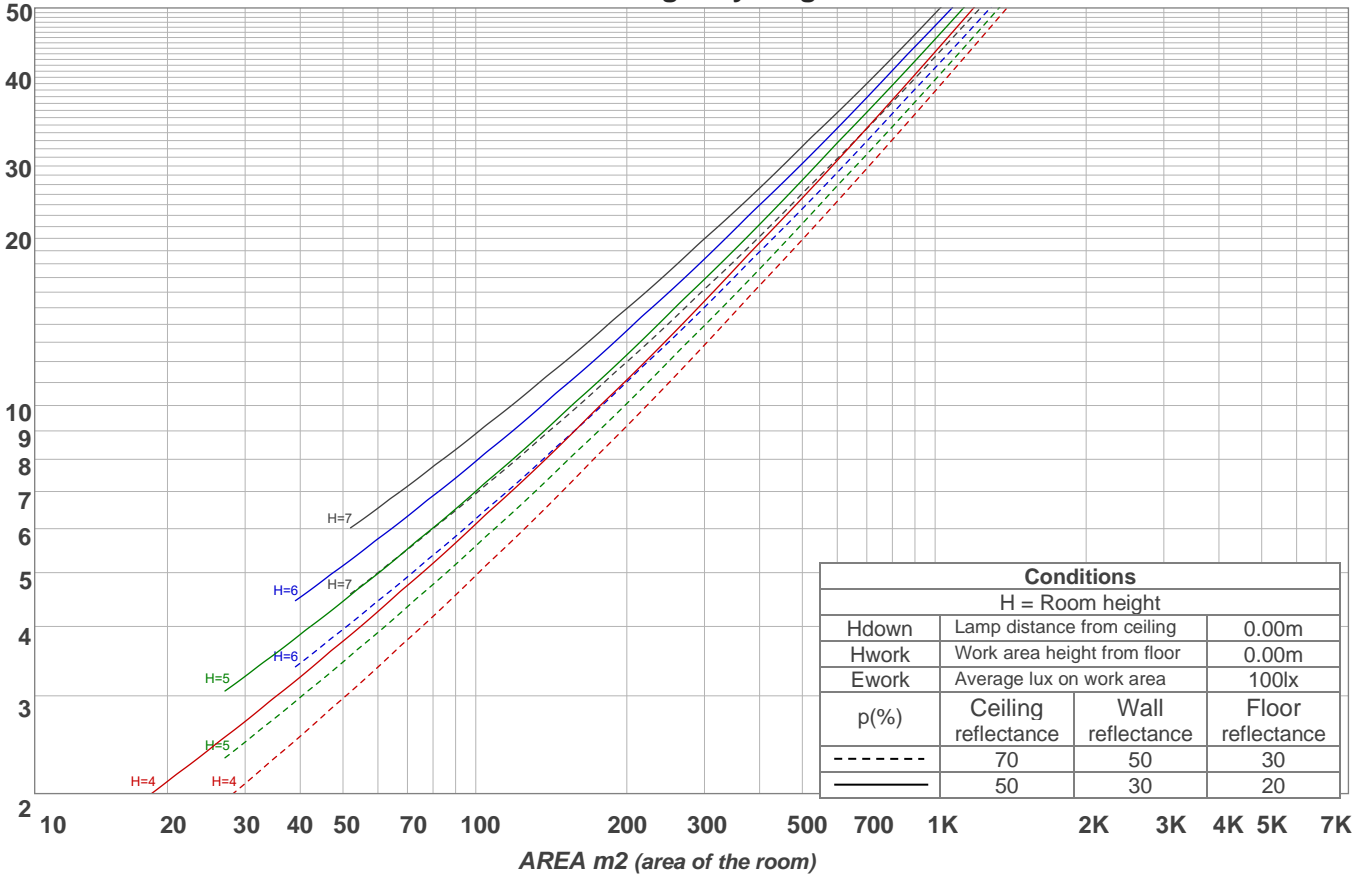
p Ceiling	70	70	50	50	30	70	70	50	50	30	
p Walls	50	30	50	30	30	50	30	50	30	30	
p Floor	20	20	20	20	20	20	20	20	20	20	
Room size X Y	Viewing direction at right angles to lamp axis					Viewing direction parallel to lamp axis					
2H	2H	15,8	17,0	16,1	17,4	17,7	15,7	16,9	16,0	17,3	17,6
	3H	17,5	18,7	17,9	19,1	19,4	17,3	18,6	17,8	18,9	19,2
	4H	18,2	19,4	18,7	19,8	20,1	18,1	19,3	18,5	19,6	20,0
	6H	19,0	20,0	19,4	20,4	20,8	18,8	19,8	19,2	20,2	20,6
	8H	19,3	20,3	19,7	20,7	21,2	19,0	20,1	19,4	20,4	20,9
12H	19,6	20,6	20,0	21,0	21,5	19,3	20,3	19,7	20,7	21,2	
4H	2H	16,4	17,6	16,9	18,0	18,3	16,4	17,6	16,8	17,9	18,3
	3H	18,4	19,4	18,8	19,8	20,3	18,3	19,3	18,7	19,7	20,2
	4H	19,2	20,2	19,7	20,6	21,3	19,1	20,1	19,6	20,5	21,1
	6H	20,1	20,9	20,6	21,4	21,8	19,9	20,8	20,4	21,2	21,6
	8H	20,4	21,2	21,0	21,7	22,1	20,2	21,0	20,8	21,5	21,9
12H	20,8	21,5	21,4	22,0	22,5	20,5	21,2	21,1	21,7	22,3	
8H	4H	19,6	20,4	20,1	20,8	21,3	19,5	20,3	20,0	20,7	21,2
	6H	20,6	21,2	21,2	21,8	22,4	20,4	21,0	21,0	21,6	22,2
	8H	21,1	21,7	21,7	22,3	23,0	20,9	21,5	21,5	22,0	22,8
	12H	21,6	22,1	22,3	22,7	23,3	21,4	21,8	22,0	22,4	23,1
12H	4H	19,6	20,3	20,2	20,8	21,3	19,5	20,2	20,1	20,7	21,2
	6H	20,7	21,3	21,3	21,9	22,6	20,6	21,1	21,1	21,7	22,4
	8H	21,3	21,7	21,9	22,3	23,0	21,1	21,5	21,7	22,1	22,8
Variation of the observer position for the luminaire distance S											
S = 1.0H	0,1 / -0,1					0,1 / -0,1					
S = 1.5H	0,1 / -0,1					0,1 / -0,1					
S = 2.0H	0,3 / -0,3					0,3 / -0,3					
CIE 117-1995. Corrected glare indices referring to 3036 lm total luminous flux											

Coefficients of Utilization

Ceiling reflectance	80				70				50			30			10			0	
	70	50	30	10	70	50	30	10	50	30	10	50	30	10	50	30	10	0	
Wall reflectance																			
Floor reflectance	20	20	20	20	20	20	20	20	20	20	20	20	20	20	20	20	20	20	0
RCR	(RCR: Room Cavity Ratio) Room Values are expressed as percentage of Lumens delivered to the task surface																		
0	118	118	118	118	115	115	115	115	109	109	109	103	103	103	98	98	98	96	
1	107	102	97	93	104	99	95	91	94	90	87	89	86	84	85	83	80	78	
2	97	88	81	75	94	86	79	74	81	76	71	78	73	69	74	70	67	64	
3	88	77	69	62	85	75	67	61	71	65	59	68	62	58	65	60	56	54	
4	80	68	59	52	78	66	58	52	63	56	50	60	54	49	58	52	48	46	
5	74	61	52	45	71	59	51	44	57	49	43	54	48	43	52	46	42	39	
6	68	55	45	39	66	53	45	39	51	44	38	49	42	37	47	41	37	34	
7	63	49	41	34	61	48	40	34	46	39	33	45	38	33	43	37	32	30	
8	59	45	36	31	57	44	36	30	42	35	30	41	34	29	39	33	29	27	
9	55	41	33	27	53	41	33	27	39	32	27	38	31	26	36	30	26	24	
10	51	38	30	25	50	37	30	25	36	29	24	35	29	24	34	28	24	22	

LAMPS (number of lamps)

Luminaire budgetary diagram



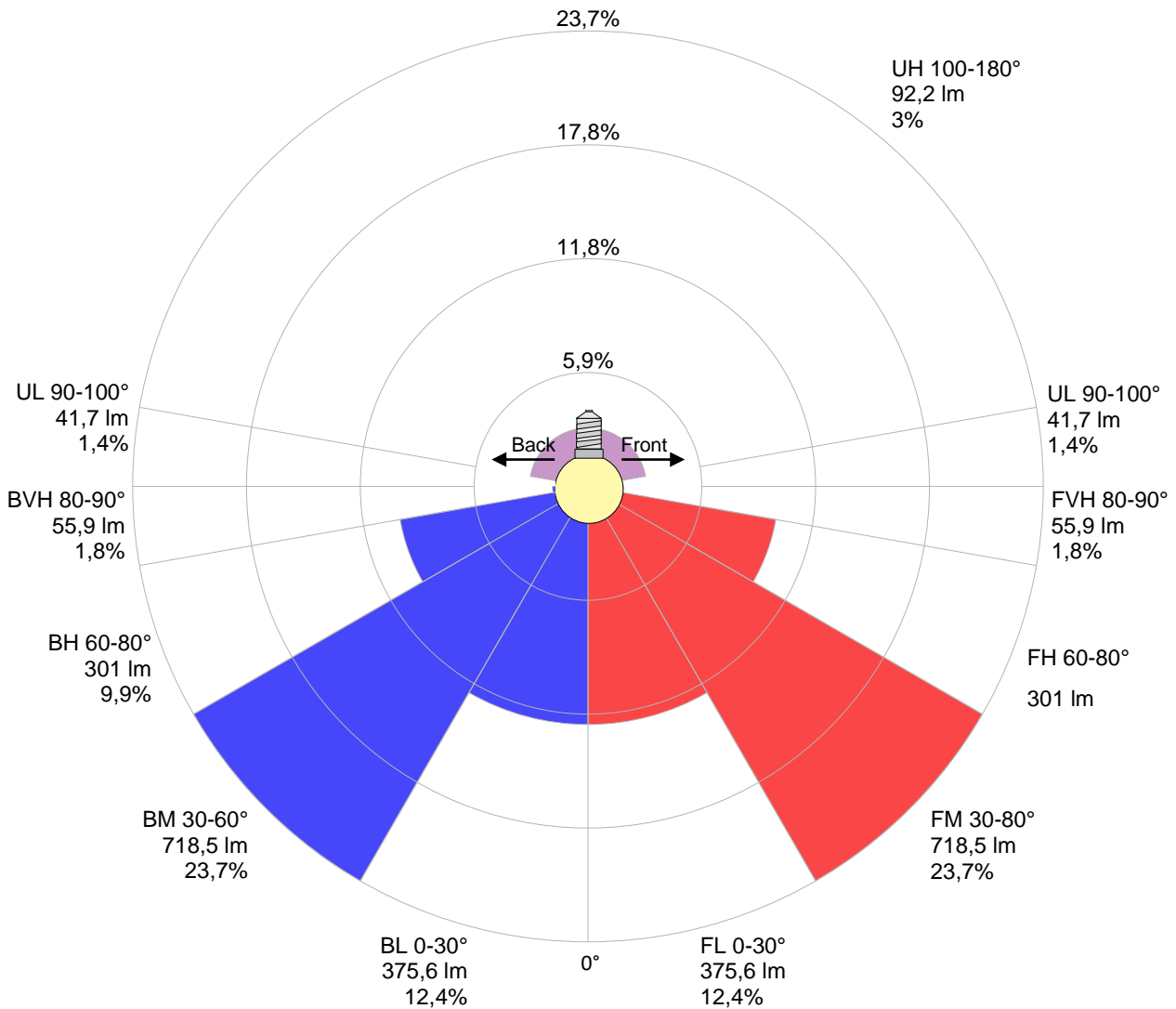
Zonal Lumen Summary

0°-10°	10°-20°	20°-30°	30°-40°	40°-50°	50°-60°	60°-70°	70°-80°	80°-90°
{LUM0-10}	263 lm	397 lm	479 lm	500 lm	459 lm	366 lm	236 lm	111 lm
90°-100°	100°-110°	110°-120°	120°-130°	130°-140°	140°-150°	150°-160°	160°-170°	170°-180°
40,4 lm	28,2 lm	24,2 lm	16,9 lm	10,3 lm	5,88 lm	3,88 lm	2,05 lm	0,607 lm

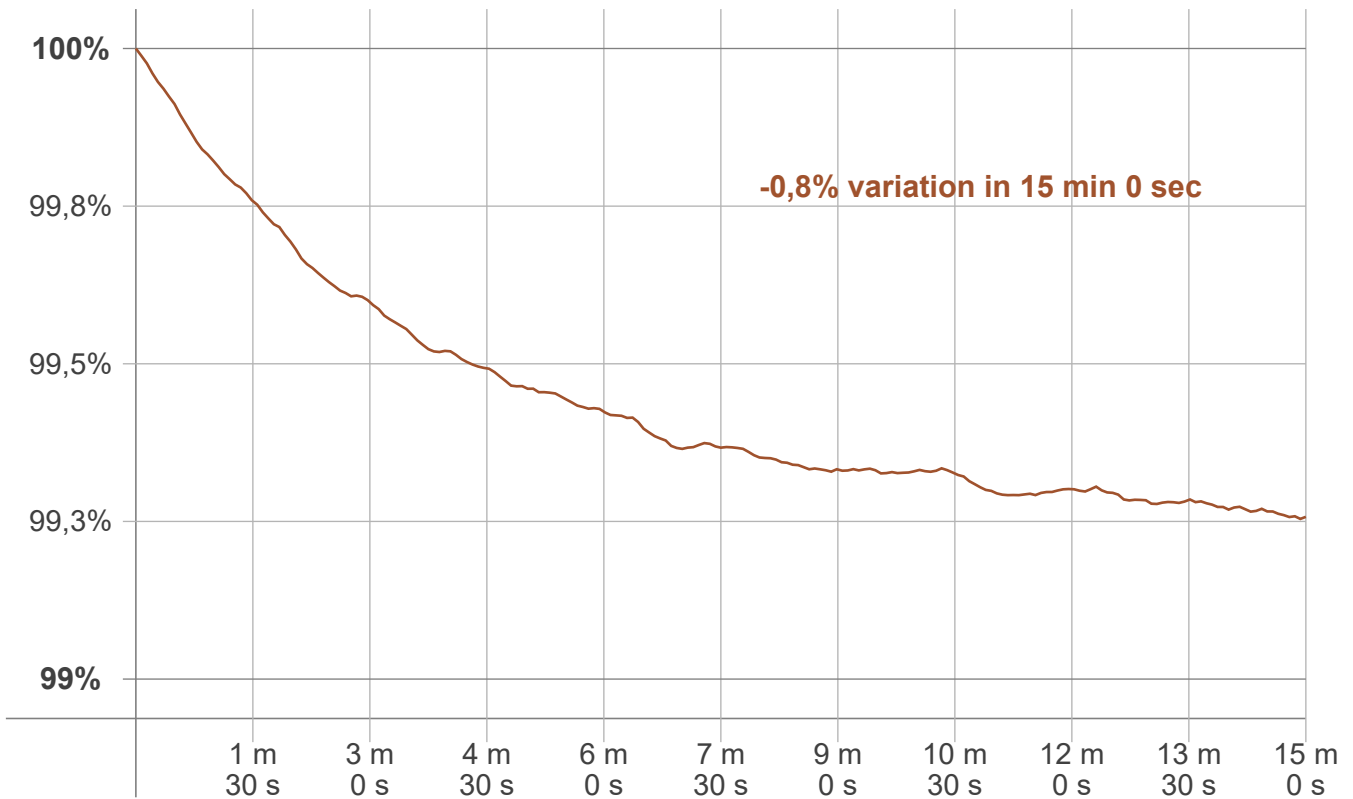
LCS table

BUG rating:	B1 U3 G1	
Forward light	Lumens	Lumens %
Low(0-30):	375,6	12,4%
Medium(30-60):	718,5	23,7%
High(60-80):	301	9,9%
Very high(80-90):	55,9	1,8%
Back light		
Low(0-30):	375,6	12,4%
Medium(30-60):	718,5	23,7%
High(60-80):	301	9,9%
Very high(80-90):	55,9	1,8%
Uplight		
Low(90-100):	41,7	1,4%
High(100-180):	92,2	3%

LCS graph



Warmup curve



Warmup result

Warmup time:	Lamp stabilized in 15 min 0 sec
Warmup variation	-0,8%

Warmup conditions

Stable period:	15 min
Stable change max:	2,0%
Minimum time:	15 min

Color temperature change

CCT start	CCT change	CCT end
4985 K	+15 K	5000 K

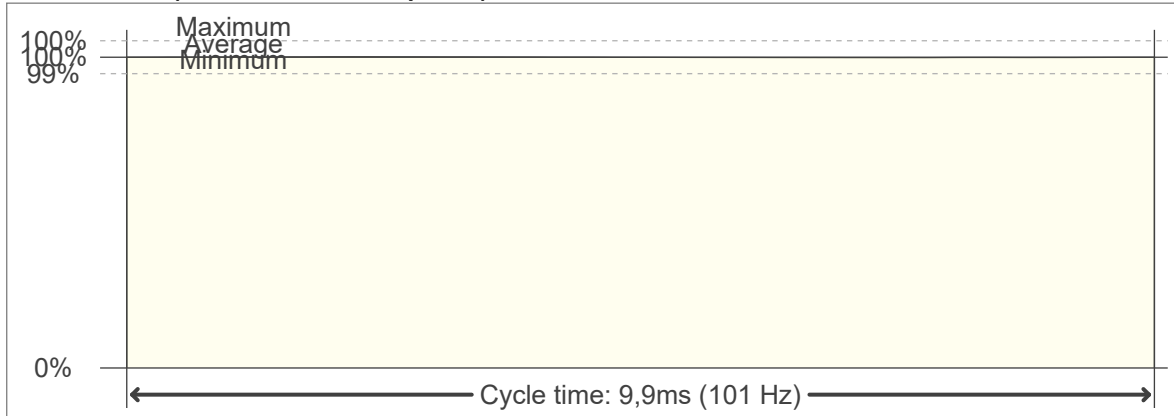
Output change

Output start	Output change	Output end
3059 lm	-23 lm	3036 lm

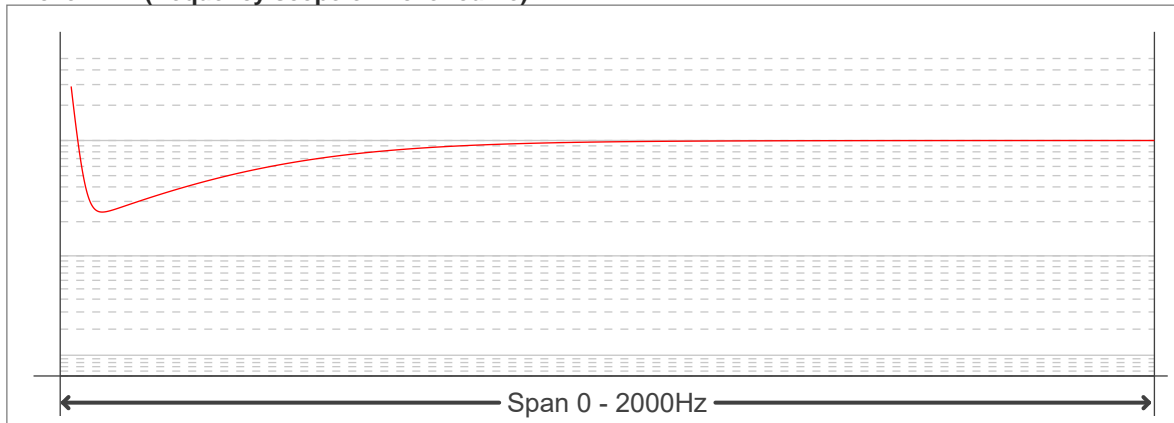
Flicker curve (complete sampled flicker signal)



Flicker frame (frame of one flicker period)



Flicker FFT (frequency scope of flicker curve)



Flicker results:

Flicker frequency:		101,01 Hz	
Flicker index:	0	JA8/10 40Hz	0,02 %
Flicker percentage:	0,19 %	JA8/10 90Hz	0,02 %
SVM: (Visual flicker)	0	JA8/10 200Hz	0,15 %
PstLM	0,01	JA8/10 400Hz	0,16 %
Mp	0,01	JA8/10 1000Hz	0,18 %

Flicker conditions:

Sample rate:	20000 samples/second
--------------	----------------------