

LED EMERGENCY CONVERTER

LED EMERGENCY CONVERTER EEC300A/LA

Description

The emergency converter 810009/810016 is universal design for use with most LED lamps that works with constant power drivers. It is an emergency battery pack that uses electronic circuitry to convert energy stored in a battery into the DC voltage and current necessary to drive the LED load.

The unit can be installed as maintained or non-maintained unit and it allows the same LED fixture to be used for both normal and emergency operation.

When in emergency mode, the unit will operate a 1.2/2.5/3.5/5W LED load with constant power with a rated output voltage of 10-54V/10-300V. The unit has a discharge protection circuit, over load, short circuit and battery low voltage protection.

Each unit includes the battery pack, LED charge indicator, a test switch and the emergency power module, everything combined in a single box.

General Specification

Rated supply voltage	220-240VAC
Mains frequency	50/60Hz
Ambient temperature t_a	5-50 °C
Battery ambient temperature	5-60°C
Max. Casing temperature t_c	70 °C

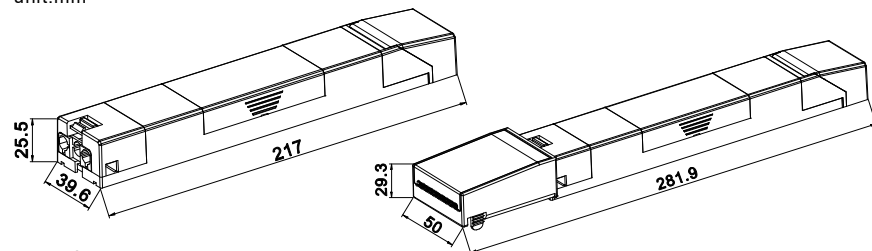
Battery discharge and LED output specifications

Item Code	Output voltage Min-Max	Output current Min-Max	Output power Min-Typ-Max	Battery discharge current Min-Typ-Max	Battery output power Min-Typ-Max	Battery discharge voltage Min-Typ-Max
810009	10-300Vdc	2-100mA	0.6-0.8-1W	300-350-420mA	0.9-1.1-1.3W	2.5-3.2-3.6V
810016	10-300Vdc	5-170mA	1.5-1.7-2W	650-740-840mA	1.9-2.4-2.7W	

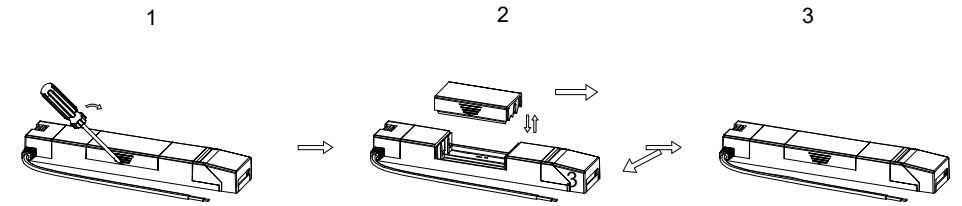
Item Code	Batteries	Emergency Power	Emergency Duration	Charge Current	Charge Time
810009	3.2V/1500mAhLiFePO4 battery	1.2W	3h	200mA±10%	16h
810016	3.2V/3000mAhLiFePO4 battery	2.5W	3h		

Mechanical Outline

unit:mm



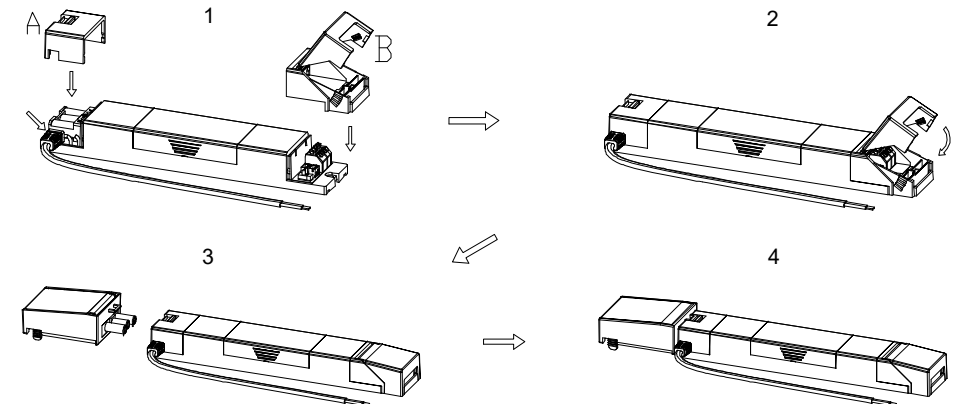
Mounting Options



Step 1: As shown in the diagram, insert a screwdriver into the hole and rotate to pry the battery box loose.

Step 2: Take out the battery cartridge to replace it.

Step 3: Snap the new battery cartridge down to complete the battery cartridge installation.

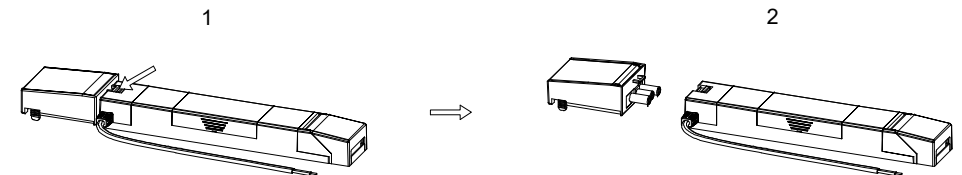


Step 1: Insert accessory A downwards into the product and secure the wire buckle as shown by the arrow during the insertion process.

Step 2: Insert accessory B downwards into the product, flip down the upper cover of accessory B, and complete the installation.

Step 3: Insert the AC quick plug in connector into one side of accessory A.

Step 4: Complete the installation of the communication quick insertion connector.



Step 1: Release the buckle from the junction box at the position indicated by the arrow

Step 2: Pull out the AC quick plug in connector outward and complete the disassembly