





LED Wall Pack Light WP-B



Better solutions for Led Wall Pack Light

 IP65 w ater-proof	 AC100-277V 50/60Hz
 Easy Installation	 140Lm/w
Operating Temp: -40°C ~+50°C(C5) -20°C ~+50°C(C4)	Storage Temp: -40°C ~+80°C



Options

Driver	Voltage	CCT
Sosen Driver UL/TUV/CE/SAA Driver	AC120-347V for C5	5000K

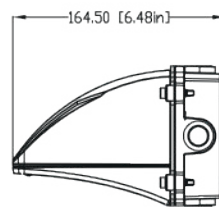
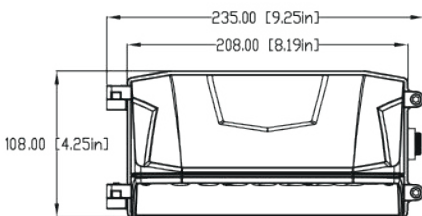
Application

LED Wall Pack Light series can be widely used as Exterior or interior LED lighting for Hotels, Garages, Commercial Buildings, Public areas, Schools and Hospitals, etc.

Specifications

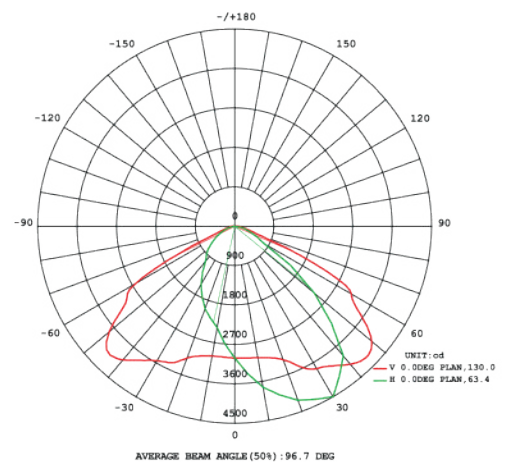
Item	Power	Luminous Ef ficacy	Leds	CRI	Weight	Lens
WP-B30	30W	140Lm/W	SMD 3030	>80	1.85KG(4.10lbs)	130x60°
WP-B50	50W	140Lm/W	SMD 3030	>80	1.85KG(4.10lbs)	130x60°

Dimensions(mm)



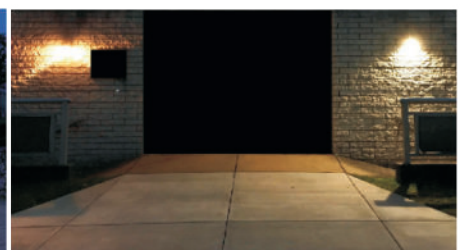
30W/50W

Photometry



130x60°

LED Wall Pack Light

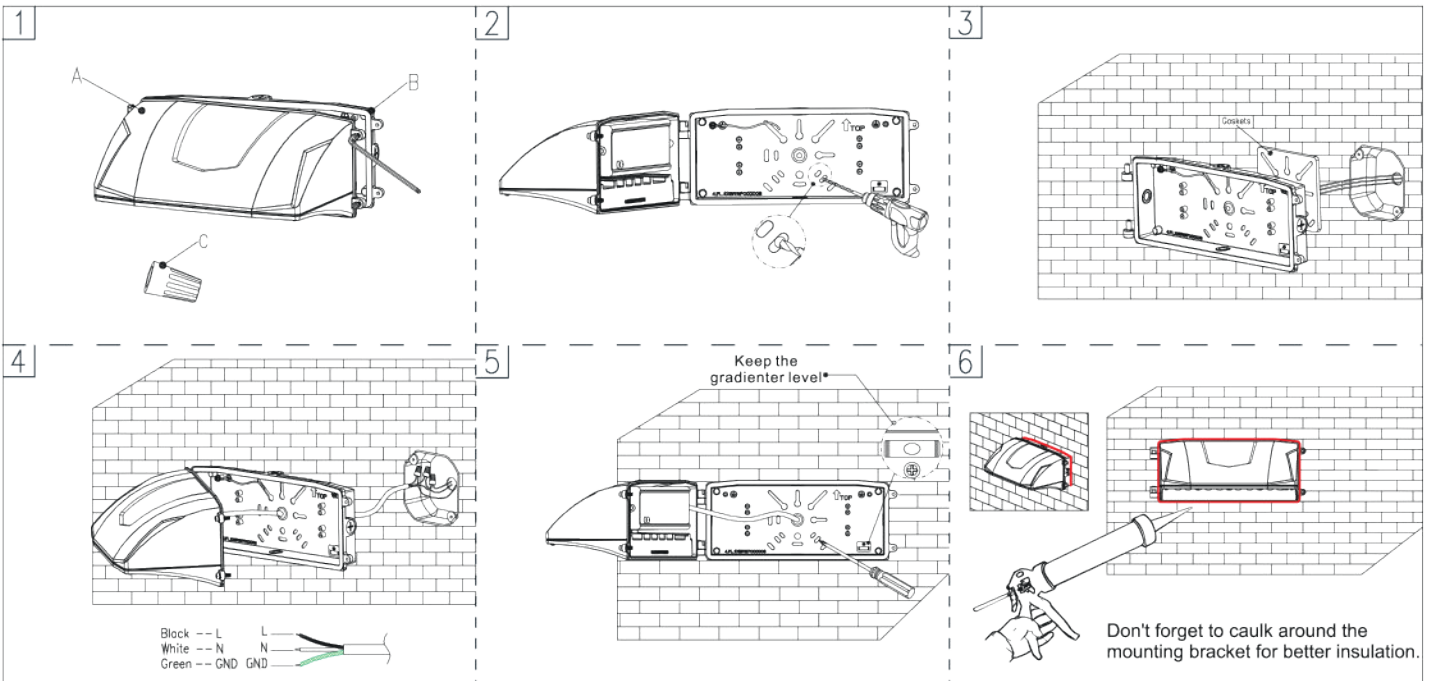


LED Wall Pack Light WP-B

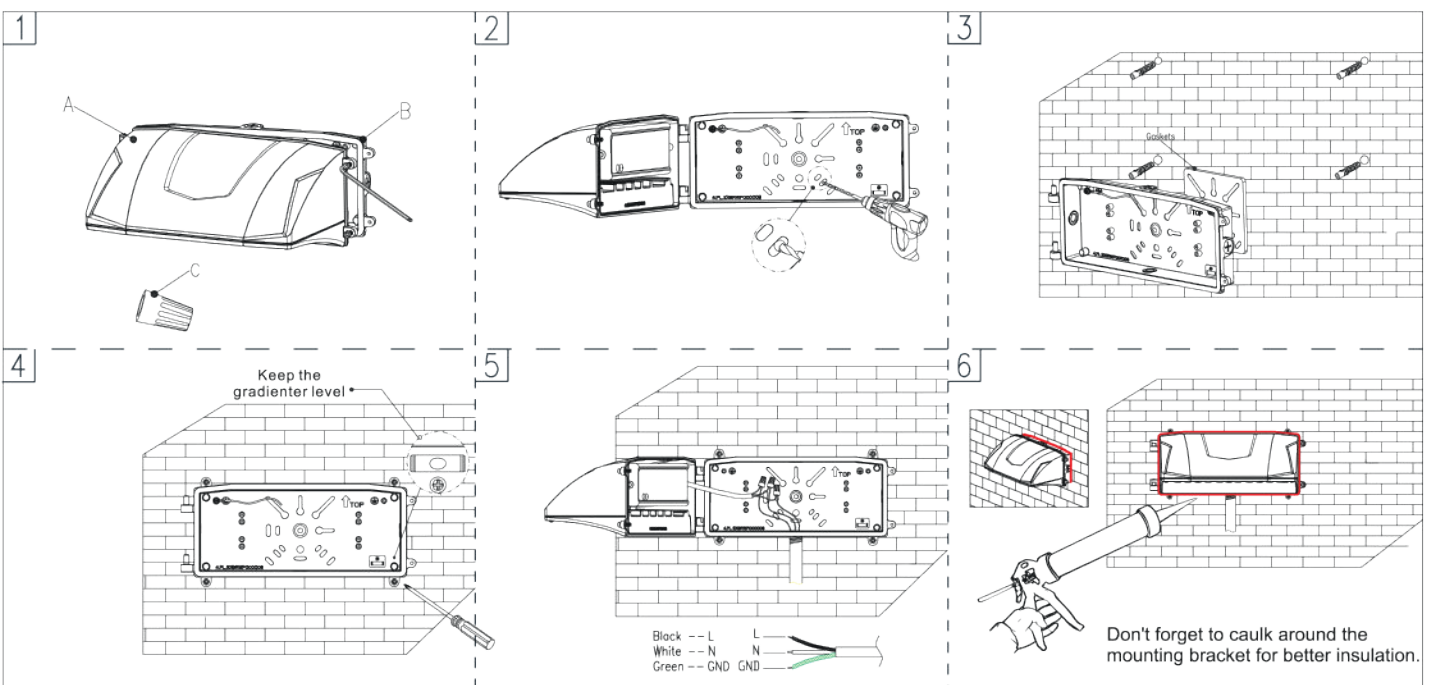


Installation and use

P1-Mounting with J-box



P2-Mounting with a 1/2" conduit at the bottom



Packing Spec

Item	Box			Cart on		
	Measurement (mm)	Gross w eight	Pcs/box	Measurement (mm)	Gross w eight	Pcs/box
WP-B30, WP-B50	L260*W158*H220	2.2kg(4.85lbs)	1	L500*W270*H460	13.5kg(29.76lbs)	6