

# Light Measurement Report

Print date: 1-7-2025

Measurement date and time: 30-6-2025 16:38:55 – Measurement no. VFR-250630-1818-MS

Measurement tracking No. and Link: [VT250630-001854](#)

Operator:



## Laboratory and Equipment

Laboratory Owner and Location  
Goniospectrometer System and Type  
Sensor Name, Calibr. Date and Serial No.  
Spectrometer Manufacturer and Model

Viso Systems, Copenhagen V, Denmark  
LabSpion – Type C, horizontal  
LabSensor Model2 – 11-1-2024 – 3130191315  
Ibsen Photonics, Denmark – Freedom VIS (Custom Viso)

## Measurement Conditions

Number of C-planes and Resolution  
 $\gamma$  (gamma)-Resolution  
Test Distance  
Input Power, Power and Displ. Factors  
Input RMS Voltage and Current  
Frequency of Input Power  
Warm-up Time and Variation

16 planes – 22,5°  
5°  
1,99 m  
30,4 W – PF 0,99 – DPF 1,0  
230 V – 0,134 A  
50 Hz  
Lamp stabilized in 15 min 3 sec – 2,0%

## Tested Light Source

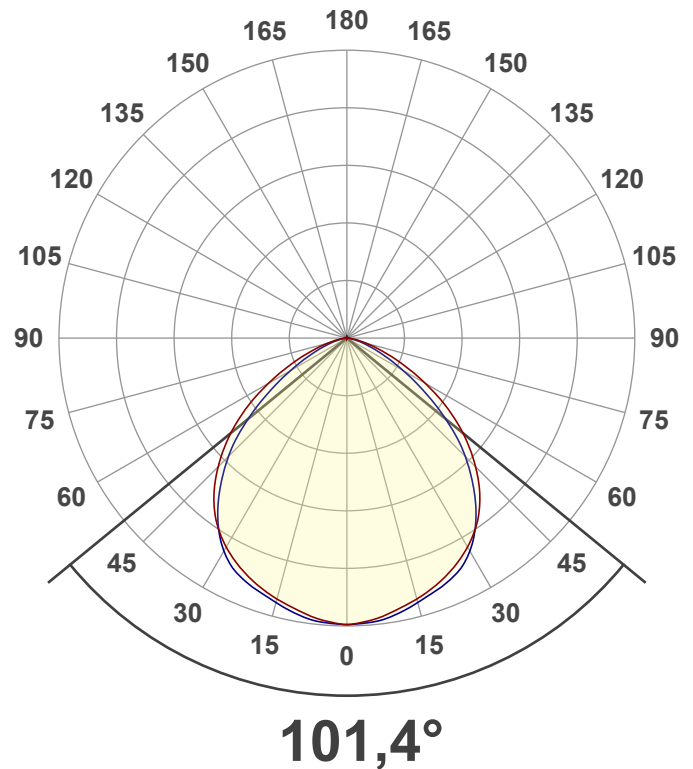
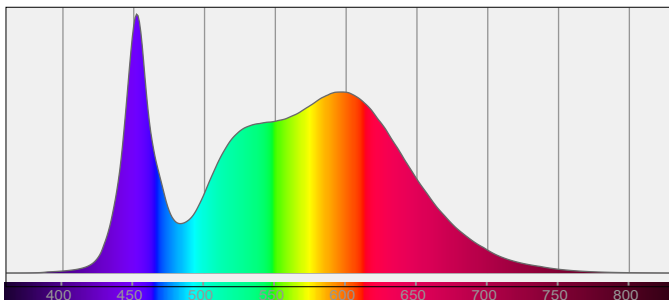
Product Name  
Item No. and Manufacturer  
Product Description (line 1)

811501-4000K  
811501-4000K – Dutchfulfillment  
LED FLOODLIGHT ISTOS | 30W | CCT-SWITCH

## Main Light Measurement Results

Output – Total Lumen (Up% / Down%)  
Efficiency  
Peak Intensity and Beam Angle  
Correlated Color Temperature, Target/Measured  
Color Rendering Index  
Color Rendering TM30-18  
Color Shift, CIE duv and MacAdam Steps  
Flicker

3057 lm – 0,03% / 99,97%  
100 lm/W  
1293 cd – 101,4°  
CCT = 4000 K / 4340 K  
CRI 84,8  
 $R_f$  83,6 –  $R_g$  97,8  
Duv -0,0023 – SDCM 7,4  
SVM 3,64 – PstLM 0,07



# Light Measurement Report

Print date: 1-7-2025

Measurement date and time: 30-6-2025 16:38:55 – Measurement no. VFR-250630-1818-MS

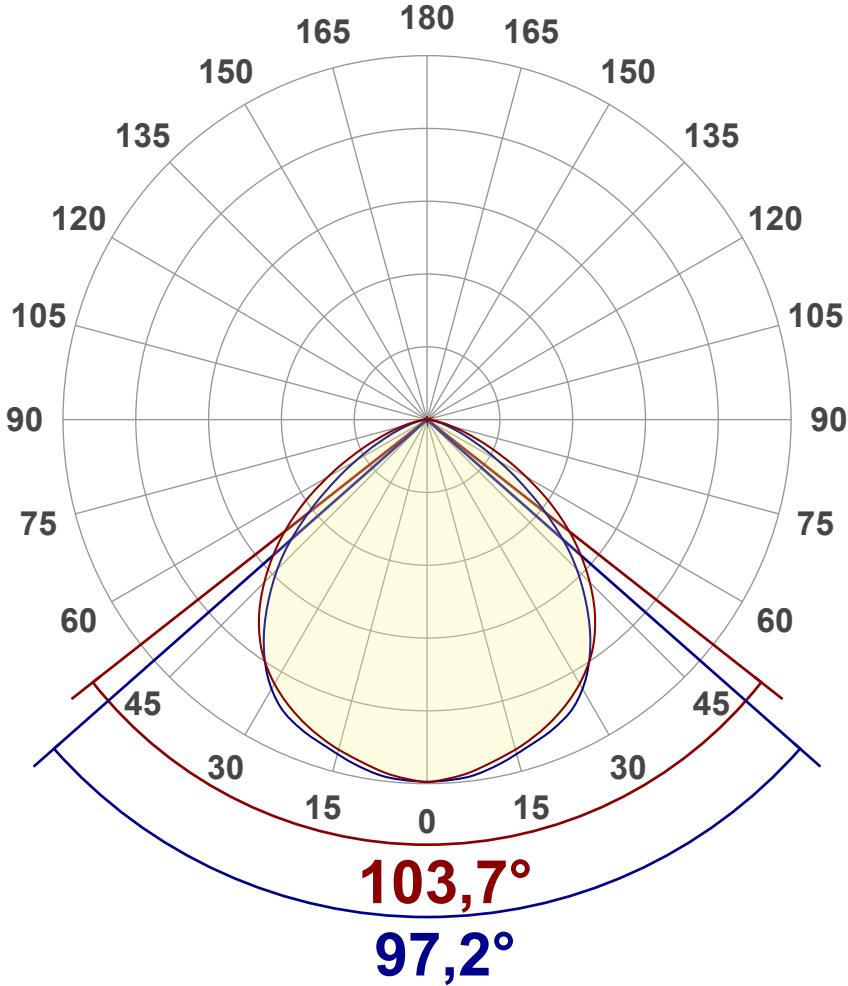
Measurement tracking No. and Link: [VT250630-001854](#)

Operator:



## Luminous Intensity diagram

Unit: 0-100% of peak intensity



## Main Values

Output (total Lumen)	3057 lm
Lumen Up% / Down%	0,03% / 99,97%
Peak Intensity	1293 cd
Beam Angle (50%)	101,4°
Beam Angle (90%)	97,2°
Beam Angle (10%)	103,7°

## Cut-off Angle

Average 2,5%	160,7°
--------------	--------

## Field Angle

Average 10%	140,6°
-------------	--------

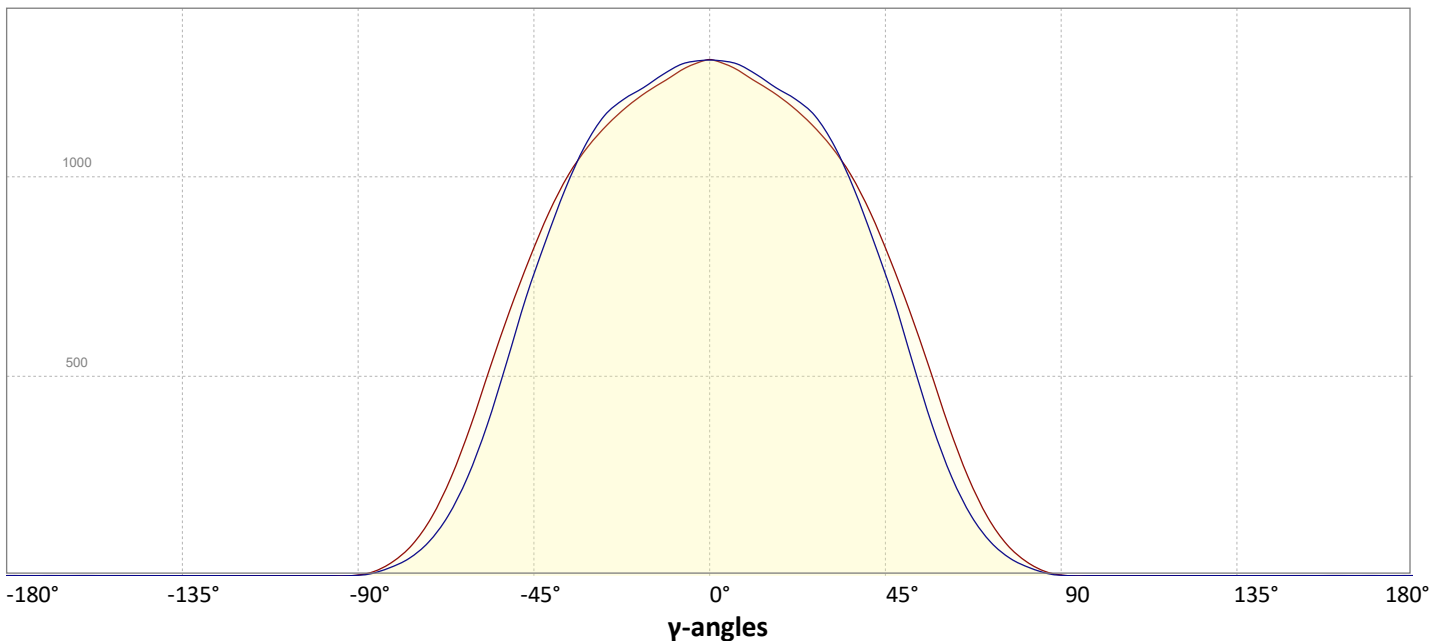
## Intensity Ratio

In 120° cone	89,5%
In 90° cone	64,9%

**C000-C180**

**C090-C270**

## Linear distribution diagram - Intensity (candela) vs $\gamma$ -angle



# Light Measurement Report

Print date: 1-7-2025

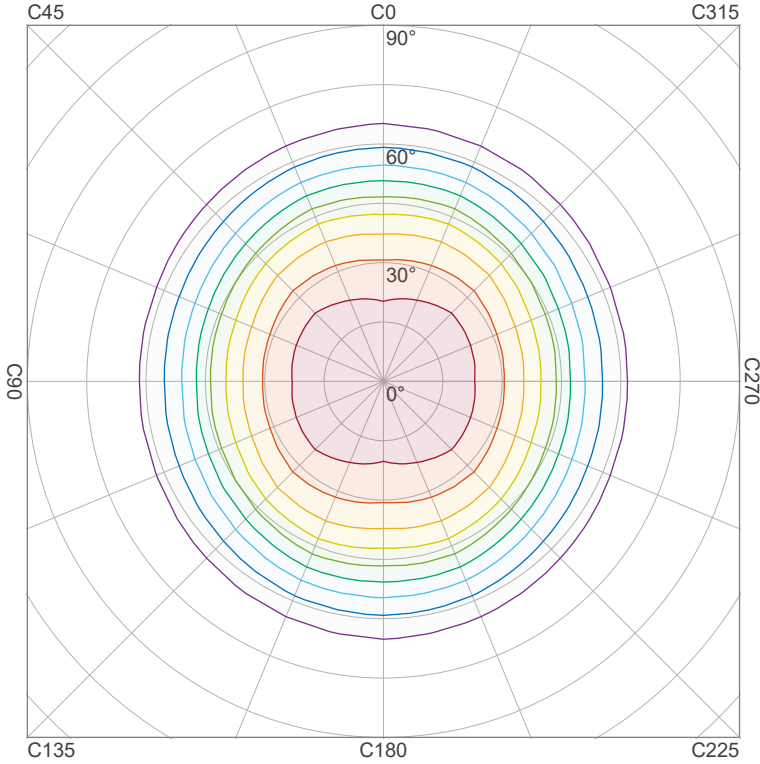
Measurement date and time: 30-6-2025 16:38:55 – Measurement no. VFR-250630-1818-MS

Measurement tracking No. and Link: [VT250630-001854](#)

Operator:



## Iso-intensity Diagram (Iso-candela)

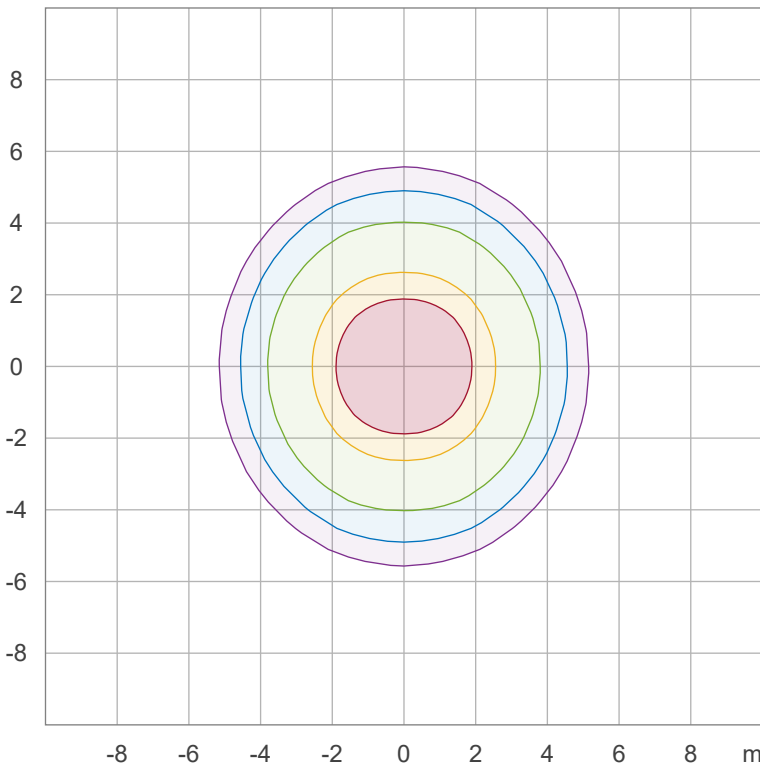


90 %	1163,9 cd
80 %	1034,6 cd
70 %	905,2 cd
60 %	775,9 cd
50 %	646,6 cd
40 %	517,3 cd
30 %	388,0 cd
20 %	258,6 cd
10 %	129,3 cd

Peak intensity: 1293,2 cd

Number of c-planes: 16

## Iso-illuminance Diagram (Iso-lux)



50,0 %	71,8 lx
30,0 %	43,1 lx
10,0 %	14,4 lx
5,0 %	7,2 lx
3,0 %	4,3 lx

Peak illuminance: 143,6 lx

Mounting height: 3,0 m

Number of c-planes: 16

# Light Measurement Report

Print date: 1-7-2025

Measurement date and time: 30-6-2025 16:38:55 – Measurement no. VFR-250630-1818-MS

Measurement tracking No. and Link: [VT250630-001854](#)

Operator:

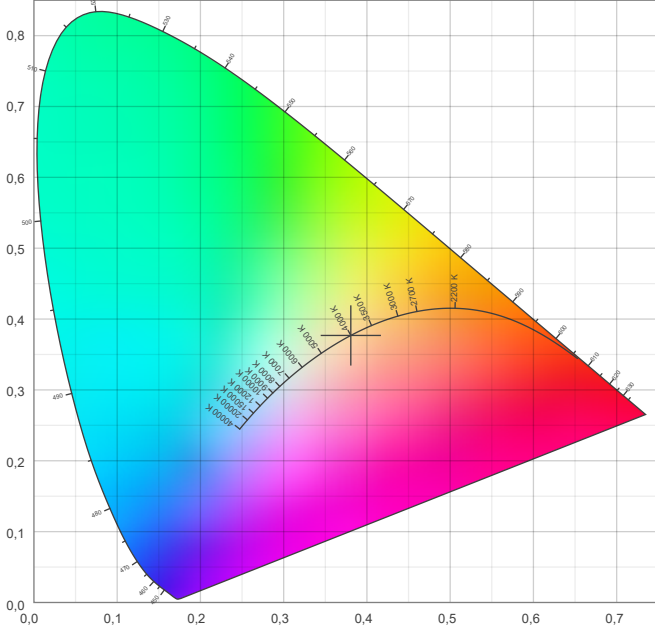


## Color details

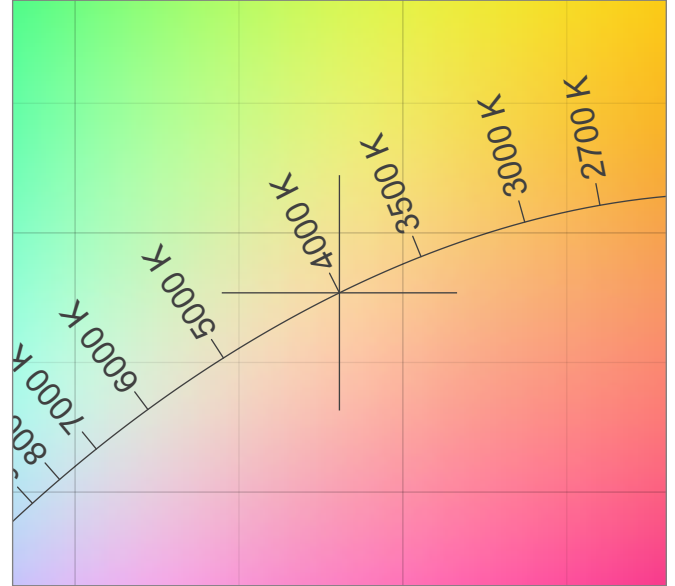
Correlated Color Temperature, Target CCT = 4000 K  
 Correlated Color Temperature, Measured CCT = 4340 K  
 Color Rendering Index CRI 84,8  
 Color Rendering Index, R9 (red component) R9 = 20,8  
 Color Rendering TM30-18 R<sub>f</sub> 83,6 – R<sub>g</sub> 97,8  
 Color Quality Scale CQS = 82,3

MacAdam Steps SDCM = 7,4  
 Color coordinates CIE 1931 (x;y) = (0,381;0,377)  
 Color coordinate CIEs 1960 (u;v) = (0,225;0,334)  
 Color deviation from BBL Duv = -0,0023  
 Color coordinate CIEs 1976 (CIELUV) (u';v') = (0,225;0,502)

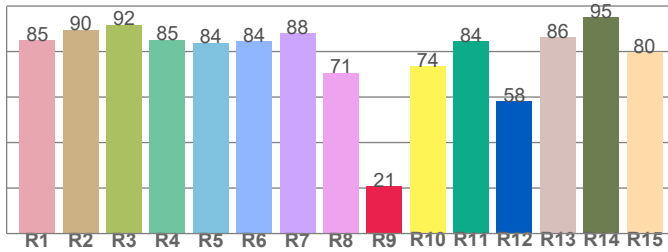
### CIE 1931



### CIE 1931 – zoomed on Planckian locus



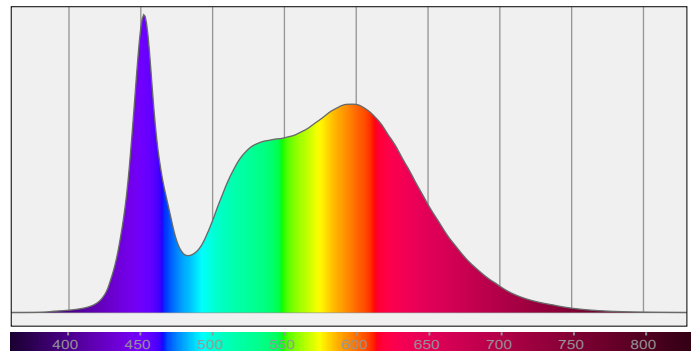
### Color Rendering Index per reference color (CIE 1995)



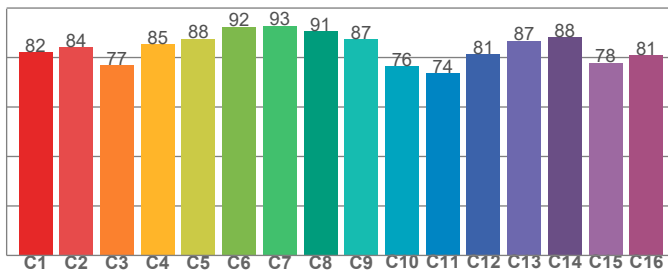
CRI R values, only R1-R8 are used to calculate final CRI value

R1	R2	R3	R4	R5	R6	R7	R8	R9	R10	R11	R12	R13	R14	R15
84,8	89,7	91,7	85,2	83,9	84,4	88,0	70,6	20,8	73,7	84,4	58,2	86,3	95,2	79,6

### Spectral power distribution (SPD) / W/nm – 0-100%



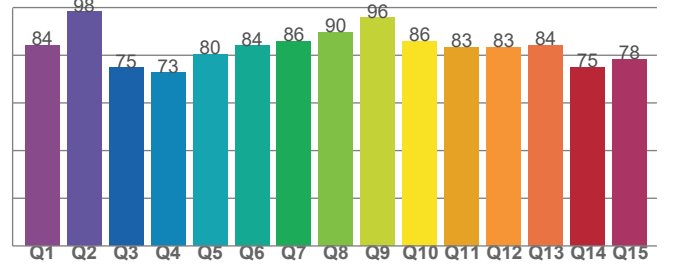
### TM30-18 Rf-values per hue bin



TM30 C values, 16 binned values out of total of 99 C values

C1	C2	C3	C4	C5	C6	C7	C8	C9	C10	C11	C12	C13	C14	C15	C16
82,0	84,1	76,8	85,4	87,7	92,4	92,8	90,6	87,4	76,4	73,6	81,4	86,8	88,1	77,9	81,0

### Color Quality Scale by reference color



CQS Q values

Q1	Q2	Q3	Q4	Q5	Q6	Q7	Q8	Q9	Q10	Q11	Q12	Q13	Q14	Q15
84,3	98,2	74,8	72,7	80,5	84,0	85,9	89,7	95,7	85,9	83,4	83,5	84,3	75,0	78,4

# Light Measurement Report

Print date: 1-7-2025

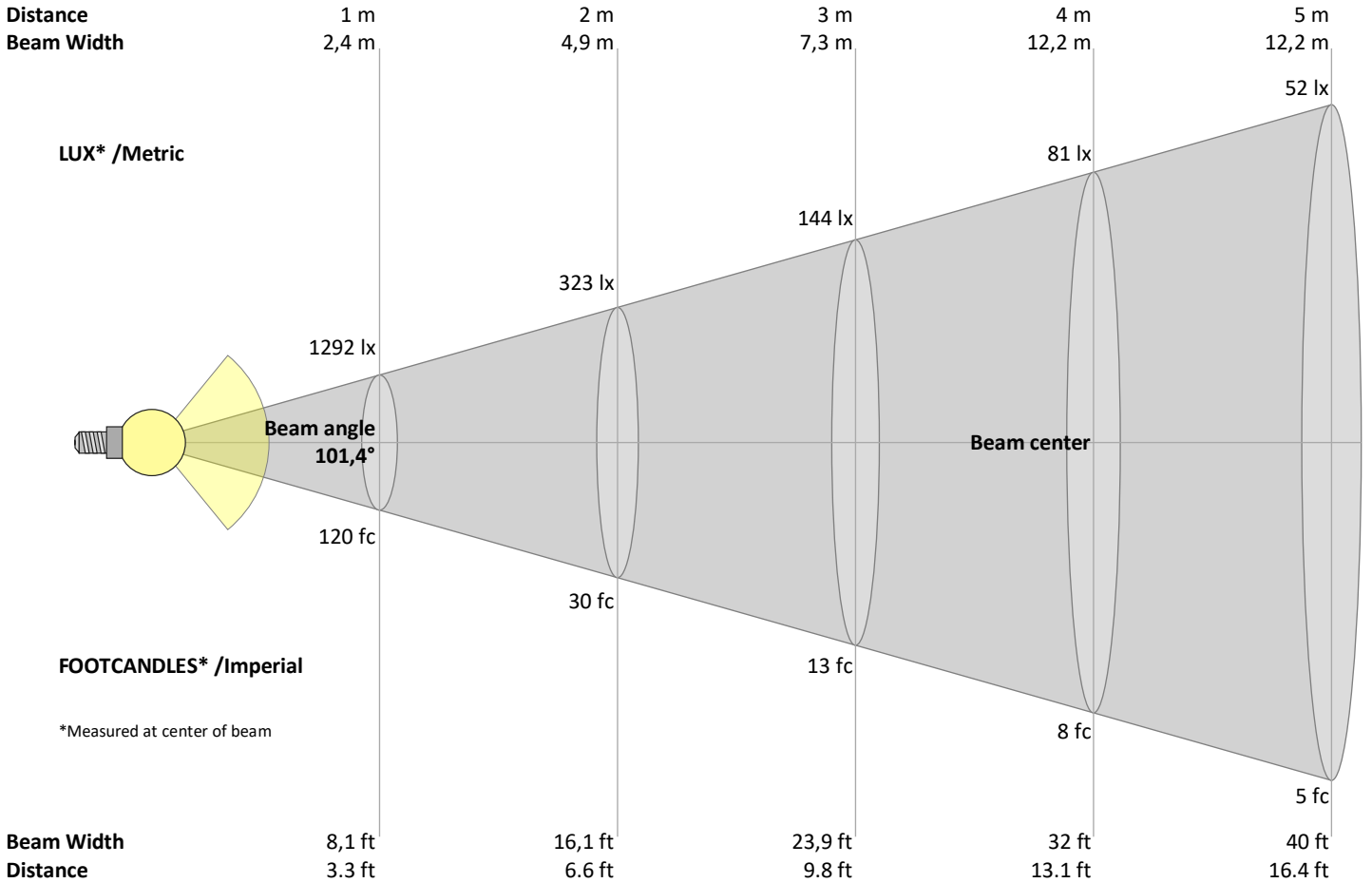
Measurement date and time: 30-6-2025 16:38:55 – Measurement no. VFR-250630-1818-MS

Measurement tracking No. and Link: [VT250630-001854](https://www.viso-systems.com/VT250630-001854)

Operator:



## Beam Details



### Beam intensities from 1 – 20 m

1	2	3	4	5	6	7	8	9	10	11	12	13	14	15	16	17	18	19	20	m
3,3	6,6	9,8	13,1	16,4	19,7	23	26,2	29,5	32,8	36,1	39,4	42,7	45,9	49,2	52,5	55,8	59,1	62,3	65,6	ft
1292	323	144	81	52	36	26	20	16	13	11	9	8	7	6	5	4	4	4	3	lux
120,1	30	13,3	7,5	4,8	3,3	2,5	1,9	1,5	1,2	1	0,8	0,7	0,6	0,5	0,5	0,4	0,4	0,3	0,3	fc

### Intensities in 0° c-plane

0°	5°	10°	15°	20°	25°	30°	35°	40°	45°	50°	55°	60°	65°	70°	75°	80°	85°	90°	95°	γ
1292	1277	1250	1219	1184	1141	1088	1021	932	820	695	556	410	277	170	94	45	16	3	0	cd
100%	99%	97%	94%	92%	88%	84%	79%	72%	63%	54%	43%	32%	21%	13%	7%	3%	1%	0%	0%	of 0°val

### Intensities in 90° c-plane

0°	5°	10°	15°	20°	25°	30°	35°	40°	45°	50°	55°	60°	65°	70°	75°	80°	85°	90°	95°	γ
1292	1286	1267	1236	1206	1169	1107	1011	890	754	599	439	298	188	110	59	29	11	2	0	cd
100%	100%	98%	96%	93%	90%	86%	78%	69%	58%	46%	34%	23%	15%	9%	5%	2%	1%	0%	0%	of 0°val

### Intensities in 180° c-plane

0°	5°	10°	15°	20°	25°	30°	35°	40°	45°	50°	55°	60°	65°	70°	75°	80°	85°	90°	95°	γ
1292	1277	1250	1219	1184	1141	1088	1021	932	820	695	556	410	277	170	94	45	16	3	0	cd
100%	99%	97%	94%	92%	88%	84%	79%	72%	63%	54%	43%	32%	21%	13%	7%	3%	1%	0%	0%	of 0°val

### Intensities in 270° c-plane

0°	5°	10°	15°	20°	25°	30°	35°	40°	45°	50°	55°	60°	65°	70°	75°	80°	85°	90°	95°	γ
1292	1286	1267	1236	1206	1169	1107	1011	890	754	599	439	298	188	110	59	29	11	2	0	cd
100%	100%	98%	96%	93%	90%	86%	78%	69%	58%	46%	34%	23%	15%	9%	5%	2%	1%	0%	0%	of 0°val

# Light Measurement Report

Print date: 1-7-2025

Measurement date and time: 30-6-2025 16:38:55 – Measurement no. VFR-250630-1818-MS

Measurement tracking No. and Link: [VT250630-001854](https://www.viso-systems.com/VT250630-001854)

Operator:



## Light Planning – UGR table

Uncorrected, comprehensive UGR table according to 117-1995

Reflectances		70	70	50	50	30	70	70	50	50	30
	ρ Ceiling	70	70	50	50	30	70	70	50	50	30
	ρ Walls	50	30	50	30	30	50	30	50	30	30
	ρ Floor	20	20	20	20	20	20	20	20	20	20
Room size		Viewed Crosswise					Viewed Endwise				
H = mounting height above eye level		(Viewing direction orthogonal to lamp length axis)					(Viewing direction parallel to lamp length axis)				
X	Y										
2H	2H	28,7	29,8	28,9	30,1	30,3	27,6	28,7	27,8	29,0	29,2
	3H	29,3	30,4	29,7	30,7	30,8	27,8	29,0	28,2	29,2	29,4
	4H	29,4	30,5	29,8	30,7	31,0	27,9	29,0	28,3	29,2	29,5
	6H	29,5	30,5	29,8	30,7	31,1	28,0	28,9	28,3	29,2	29,6
	8H	29,5	30,4	29,9	30,7	31,1	27,9	28,8	28,3	29,1	29,6
	12H	29,5	30,3	29,8	30,7	31,1	27,9	28,8	28,3	29,1	29,5
4H	2H	28,8	29,9	29,3	30,2	30,4	27,9	28,9	28,3	29,2	29,5
	3H	29,6	30,5	30,0	30,8	31,3	28,4	29,2	28,7	29,6	30,0
	4H	29,8	30,6	30,2	31,0	31,5	28,4	29,2	28,8	29,6	30,1
	6H	29,9	30,6	30,4	31,0	31,3	28,4	29,2	28,9	29,6	29,9
	8H	29,9	30,6	30,4	30,9	31,3	28,4	29,1	28,9	29,5	29,9
	12H	29,8	30,4	30,3	30,8	31,3	28,4	29,0	28,9	29,4	29,8
8H	4H	29,7	30,4	30,2	30,8	31,2	28,4	29,1	28,9	29,5	29,9
	6H	29,9	30,4	30,4	30,9	31,4	28,5	29,0	29,0	29,5	30,0
	8H	29,9	30,4	30,5	30,9	31,5	28,5	29,0	29,1	29,5	30,1
	12H	29,9	30,3	30,5	30,8	31,4	28,5	28,9	29,1	29,4	30,0
12H	4H	29,7	30,3	30,2	30,7	31,2	28,4	29,0	28,9	29,4	29,9
	6H	29,9	30,3	30,4	30,8	31,5	28,5	29,0	29,0	29,5	30,1
	8H	29,9	30,3	30,5	30,8	31,4	28,5	28,9	29,1	29,4	30,0

### Variations with the observer position for the luminaire spacings, S:

S = 1.0H	0,2 / -0,3	0,4 / -0,6
S = 1.5H	0,8 / -1,2	0,9 / -1,7
S = 2.0H	1,7 / -2,5	1,9 / -3,2

## Coefficients of Utilization

Ceiling reflectance	80			70			50			30			10			0		
Wall reflectance	70	50	30	10	70	50	30	10	50	30	10	50	30	10	50	30	10	0
Floor reflectance	20	20	20	20	20	20	20	20	20	20	20	20	20	20	20	20	20	0
RCR	(RCR: Room Cavity Ratio)																	
	Room Values are expressed as percentage of Lumen delivered to the task surface																	
0	119	119	119	119	116	116	116	116	111	111	106	106	106	102	102	102	100	100
1	111	107	103	100	108	104	101	98	100	98	95	96	94	92	93	91	89	88
2	102	95	89	84	99	93	88	83	89	85	81	86	83	79	83	80	77	75
3	94	84	77	71	91	83	76	71	80	74	70	77	72	68	75	71	67	65
4	86	76	68	62	84	74	67	61	72	65	60	70	64	60	68	63	59	57
5	80	68	60	54	78	67	59	53	65	58	53	63	57	52	61	56	52	50
6	74	62	53	47	72	61	53	47	59	52	47	57	51	46	56	50	46	44
7	69	56	48	42	67	55	48	42	54	47	42	52	46	41	51	45	41	39
8	64	51	43	38	63	51	43	38	49	42	37	48	42	37	47	41	37	35
9	60	47	39	34	59	47	39	34	46	39	34	44	38	34	43	38	34	32
10	56	44	36	31	55	43	36	31	42	35	31	41	35	31	40	35	31	29

# Light Measurement Report

Print date: 1-7-2025

Measurement date and time: 30-6-2025 16:38:55 – Measurement no. VFR-250630-1818-MS

Measurement tracking No. and Link: [VT250630-001854](#)

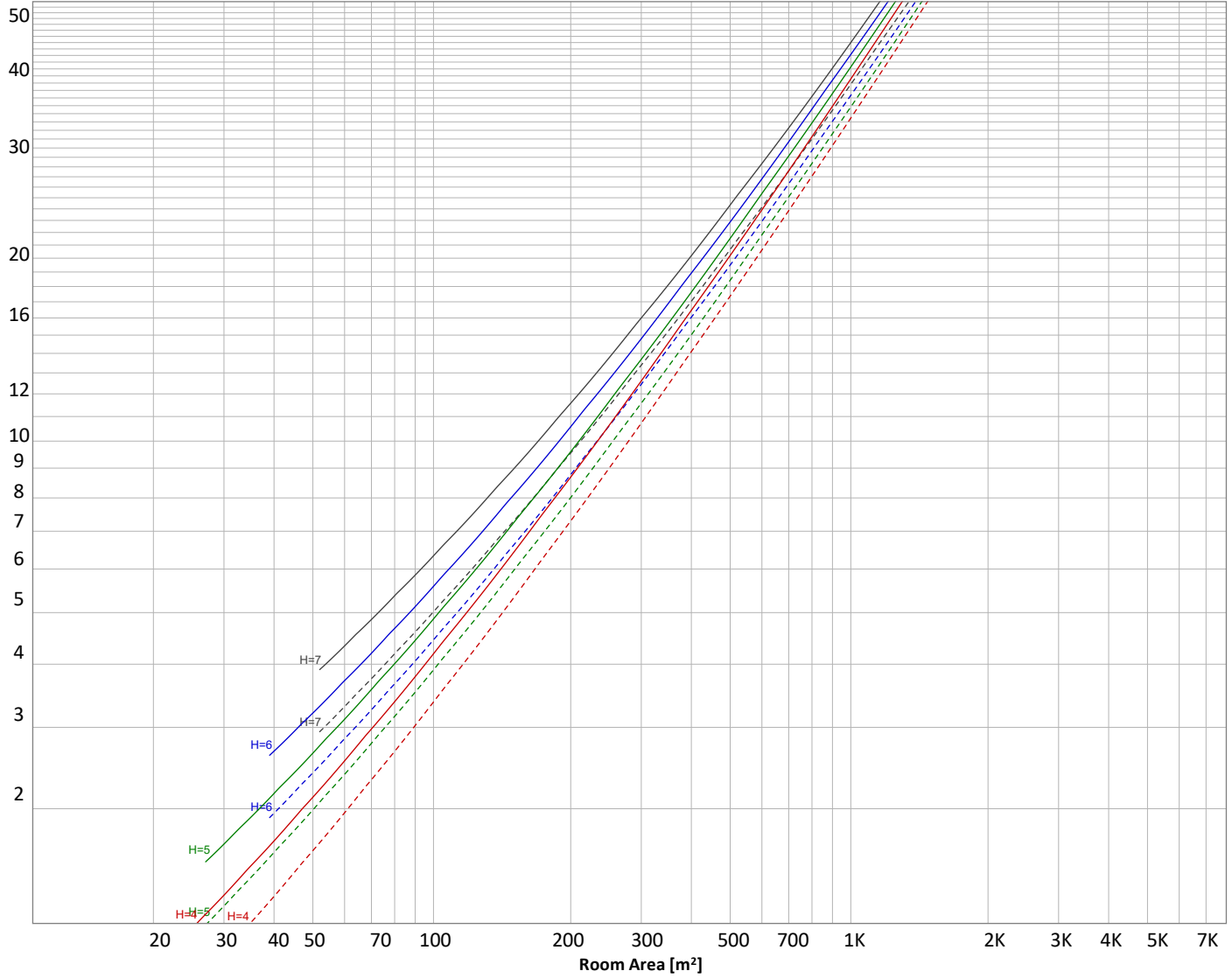
Operator:



## Luminaire budgetary diagram

Uncorrected, comprehensive UGR table according to 117-1995

LAMPS (number of lamps)



### Conditions

H = Room height	Flux = 3057 lm				
H <sub>down</sub> = Lamp distance from ceiling =	0.00 m	Line type	Ceiling reflectance	Wall reflectance	Floor reflectance
H <sub>work</sub> = Work area height from floor =	0.00 m	-----	70	50	30
E <sub>work</sub> = Average lux on work area =	100 lx	_____	50	30	20

### Zonal Lumen Summary

0°-10°	10°-20°	20°-30°	30°-40°	40°-50°	50°-60°	60°-70°	70°-80°	80°-90°
122 lm	352 lm	540 lm	646 lm	622 lm	453 lm	228 lm	77,9 lm	14,2 lm
90°-100°	100°-110°	110°-120°	120°-130°	130°-140°	140°-150°	150°-160°	160°-170°	170°-180°
0,078 lm	0,053 lm	0,112 lm	0,155 lm	0,190 lm	0,187 lm	0,155 lm	0,100 lm	0,032 lm

# Light Measurement Report

Print date: 1-7-2025

Measurement date and time: 30-6-2025 16:38:55 – Measurement no. VFR-250630-1818-MS

Measurement tracking No. and Link: [VT250630-001854](https://www.viso-systems.com/VT250630-001854)

Operator:



## Outdoor Light Planning

### Lumen per Zone

Zone (γ)	Lumen	% Total
0-10°	122 lm	4,0%
10-20°	352 lm	11,5%
20-30°	540 lm	17,7%
30-40°	646 lm	21,1%
40-50°	622 lm	20,4%
50-60°	453 lm	14,8%
60-70°	228 lm	7,4%
70-80°	78 lm	2,5%
80-90°	14 lm	0,5%
90-100°	0 lm	0,0%
100-110°	0 lm	0,0%
110-120°	0 lm	0,0%
120-130°	0 lm	0,0%
130-140°	0 lm	0,0%
140-150°	0 lm	0,0%
150-160°	0 lm	0,0%
160-170°	0 lm	0,0%
170-180°	0 lm	0,0%
<b>Total</b>	<b>3057 lm</b>	<b>100,0%</b>

### Intensity peaks

Max intensity	1293 cd
Intensity, 90°	3 cd
Intensity, 0°	1292 cd

### Zonal Lumen summary

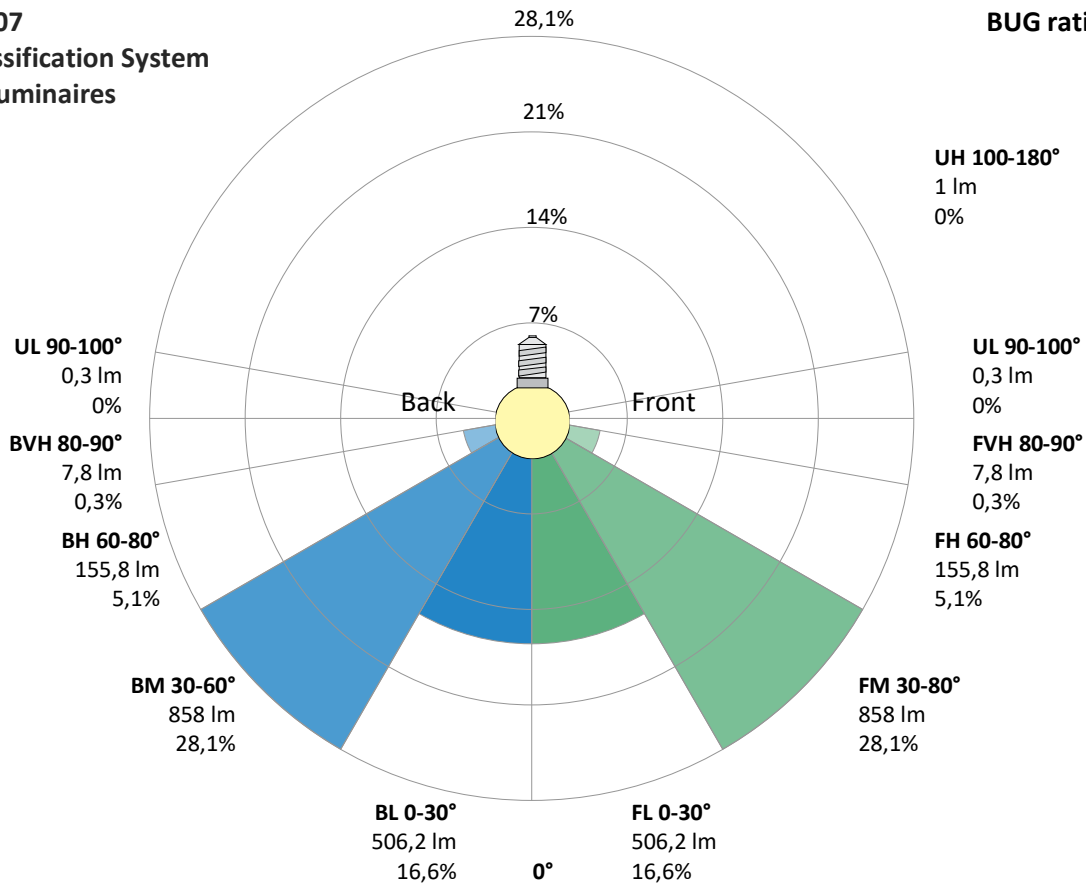
Zone (γ)	Lumen	% Total
0-30°	1015 lm	33,2%
0-40°	1661 lm	54,3%
0-60°	2736 lm	89,5%
60-90°	320 lm	10,5%
70-100°	92 lm	3,0%
90-120°	0 lm	0,0%
0-90°	3056 lm	100,0%
90-180°	1 lm	0,0%
0-180°	3057 lm	100,0%

### BUG rating

	Lumen	% Total
<b>Forward light</b>		
Low(0-30°)	506 lm	16,6%
Medium(30-60°)	858 lm	28,1%
High(60-80°)	156 lm	5,1%
Very high(80-90°)	8 lm	0,3%
<b>Back light</b>		
Low(0-30°)	506 lm	16,6%
Medium(30-60°)	858 lm	28,1%
High(60-80°)	156 lm	5,1%
Very high(80-90°)	8 lm	0,3%
<b>Uplight</b>		
Low(90-100°)	0 lm	0,0%
High(100-180°)	1 lm	0,0%

## IESNA TM-15-07 Luminaire Classification System For Outdoor Luminaires

**BUG rating B2 U1 G0**



# Light Measurement Report

Print date: 1-7-2025

Measurement date and time: 30-6-2025 16:38:55 – Measurement no. VFR-250630-1818-MS

Measurement tracking No. and Link: [VT250630-001854](#)

Operator:

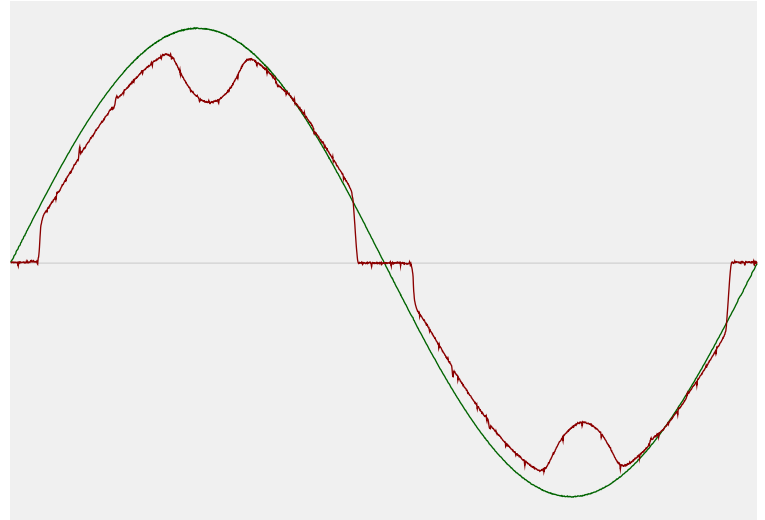


## Power Details

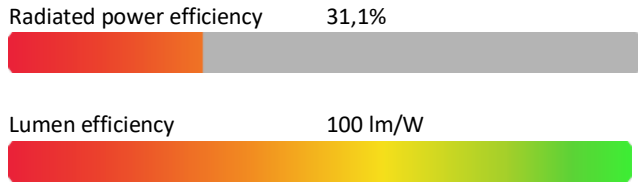
### Input Power

Power feed to light source	30,4 W
Frequency of input power	50 Hz
RMS Input voltage feed, $V_{RMS}$	230 V
RMS Input current feed, $I_{RMS}$	0,134 A
Volt-Ampere or apparent power = $V_{RMS} * I_{RMS}$	30,73 VA
Displacement factor of AC power feed	1,0
Power factor of AC current feed	0,99
Total harmonic distortion of the current	13,5%
Total harmonic distortion of the voltage	0,07%

### Input Power Curve



### Efficiency



## Stabilization Details

### Warmup Conditions

Stable period	15 min
Stable change max	2,0%
Minimum time	15 min

### Color Temperature Change

CCT start	4000 K
CCT shift	0 K
CCT end	4000 K

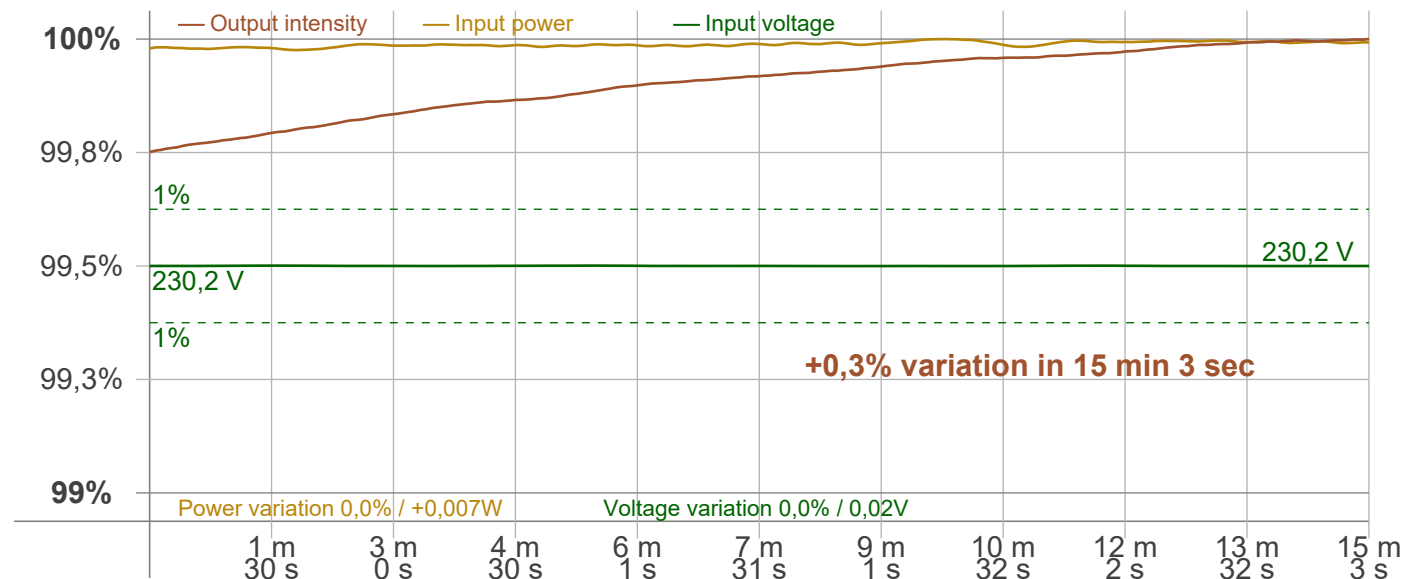
### Warmup Result

Total warmup time	Lamp stabilized in 15 min 3 sec
Warmup variation	+0,3%

### Output Change

Output start	3050 lm
Output change	+8 lm
Output end	3057 lm

## Stabilization Curve



# Light Measurement Report

Print date: 1-7-2025

Measurement date and time: 30-6-2025 16:38:55 – Measurement no. VFR-250630-1818-MS

Measurement tracking No. and Link: [VT250630-001854](https://www.viso-systems.com/VT250630-001854)

Operator:



## Flicker /TLA details

Flicker Meter Type: Viso Systems LabFlicker  
 Frequency of input power: 50 Hz  
 Flicker/TLA sample rate: 20000 samples/s

**Measurement time**  
 PstLM: 180 sec  
 All other indices: 1,2 sec

### Flicker indices according to Illuminating Engineering Society (IES)

Flicker frequency: 100 Hz  
 Percent Flicker: 99,93 %  
 Flicker index: 0,31

### Flicker indices according to California Energy Commission (CEC) 2016b

JA8/10 40 Hz: 0,23 %  
 JA8/10 90 Hz: 0,89 %  
 JA8/10 200 Hz: 104,9 %  
 JA8/10 400 Hz: 100,4 %  
 JA8/10 1000 Hz: 101,1 %

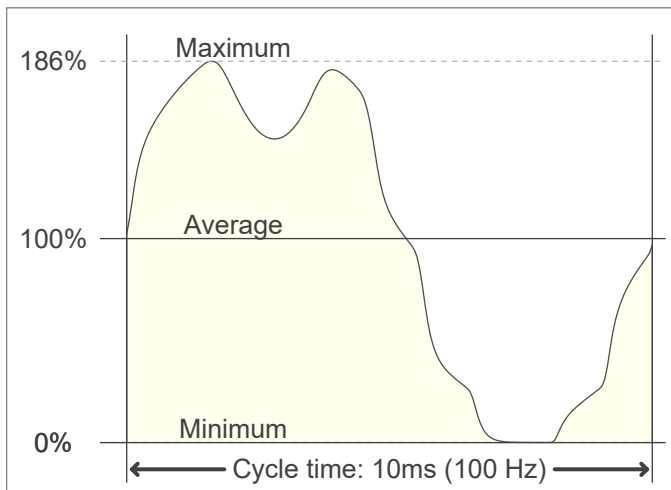
### TLA indices (re IEC TR 61547-1, IEC 61000-3-3 and IEC 61000-4-15)

PstLM value (F < 80 Hz): 0,07  
 SVM value (80 < F < 2000 Hz): 3,64

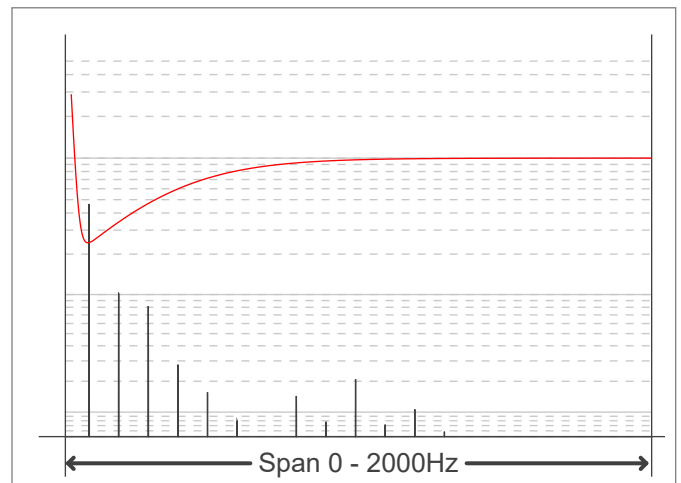
### Flicker indices according to Lighting Research Center (2015)

Perception metric, Assist Mp: 0,04

Flicker frame (frame of one flicker period in time domain)



Flicker FFT (flicker curve in frequency domain)



IEEE 1789 Frequency/modulation plot

