

# Light Measurement Report

Print date: 1-7-2025

Measurement date and time: 1-7-2025 08:35:49 – Measurement no. VFR-250701-1822-MS

Measurement tracking No. and Link: [n/a](#)

Operator:



## Laboratory and Equipment

Laboratory Owner and Location  
Goniospectrometer System and Type  
Sensor Name, Calibr. Date and Serial No.  
Spectrometer Manufacturer and Model

Viso Systems, Copenhagen V, Denmark  
LabSpion – Type C, horizontal  
LabSensor Model2 – 11-1-2024 – 3130191315  
Ibsen Photonics, Denmark – Freedom VIS (Custom Viso)

## Measurement Conditions

Number of C-planes and Resolution  
 $\gamma$  (gamma)-Resolution  
Test Distance  
Input Power, Power and Displ. Factors  
Input RMS Voltage and Current  
Frequency of Input Power  
Warm-up Time and Variation

16 planes – 22,5°  
5°  
1,99 m  
30,6 W – PF 0,99 – DPF 1,0  
230 V – 0,134 A  
50 Hz  
Lamp stabilized in 21 min 15 sec – 2,0%

## Tested Light Source

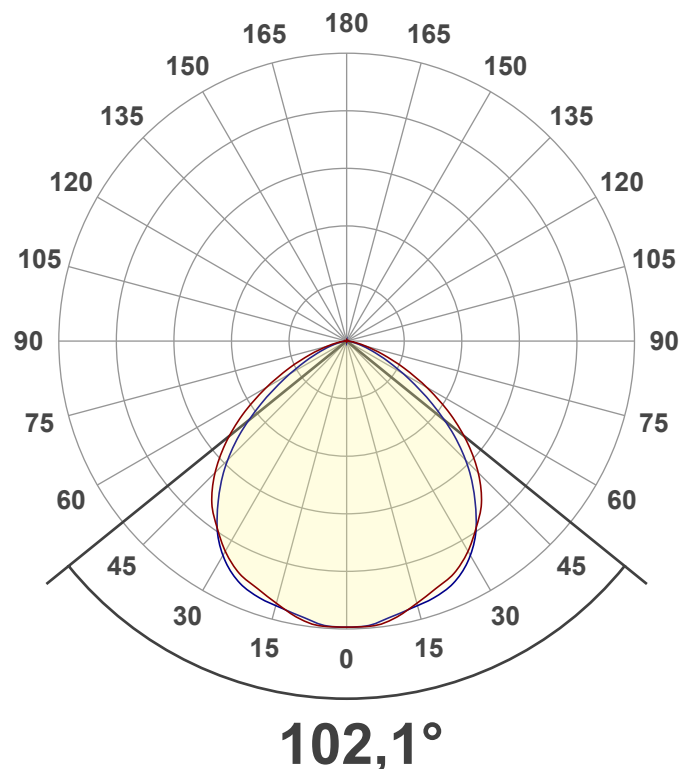
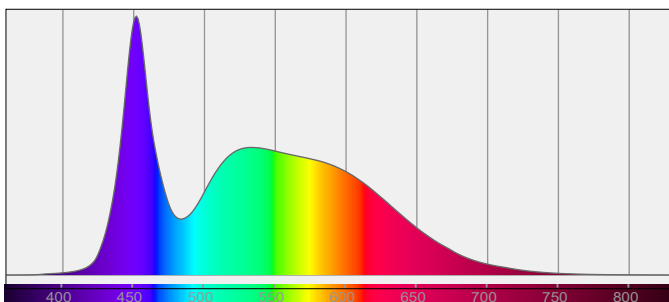
Product Name  
Item No. and Manufacturer  
Product Description (line 1)

811501-6500K  
811501-6500K – Dutchfulfillment  
LED FLOODLIGHT ISTOS | 30W | CCT-SWITCH

## Main Light Measurement Results

Output – Total Lumen (Up% / Down%)  
Efficiency  
Peak Intensity and Beam Angle  
Correlated Color Temperature, Target/Measured  
Color Rendering Index  
Color Rendering TM30-18  
Color Shift, CIE duv and MacAdam Steps  
Flicker

2792 lm – 0,06% / 99,94%  
91 lm/W  
1170 cd – 102,1°  
CCT = 6500 K / 6805 K  
CRI 82,4  
R<sub>f</sub> 82,8 – R<sub>g</sub> 95,2  
Duv 0,0064 – SDCM 9,6  
SVM 3,75 – PstLM 0,07



# Light Measurement Report

Print date: 1-7-2025

Measurement date and time: 1-7-2025 08:35:49 – Measurement no. VFR-250701-1822-MS

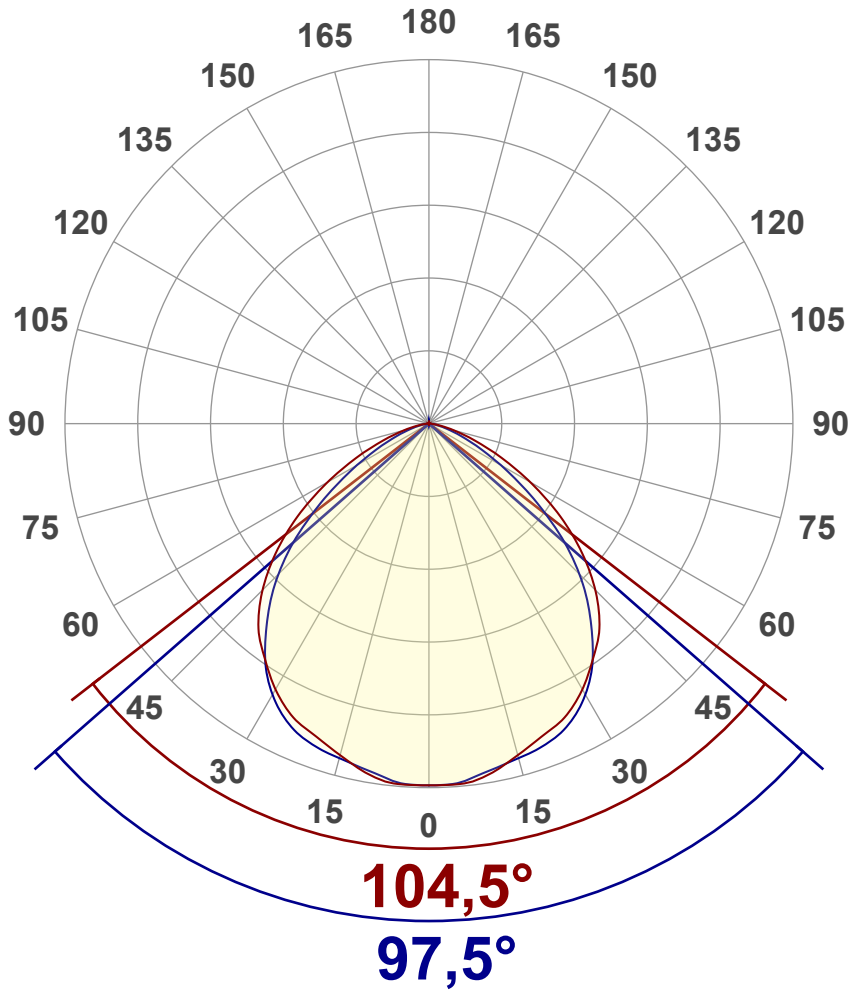
Measurement tracking No. and Link: [n/a](#)

Operator:



## Luminous Intensity diagram

Unit: 0-100% of peak intensity



## Main Values

Output (total Lumen)	2792 lm
Lumen Up% / Down%	0,06% / 99,94%
Peak Intensity	1170 cd
Beam Angle (50%)	102,1°
Beam Angle (90%)	97,5°
Beam Angle (10%)	104,5°

## Cut-off Angle

Average 2,5%	160,6°
--------------	--------

## Field Angle

Average 10%	140,9°
-------------	--------

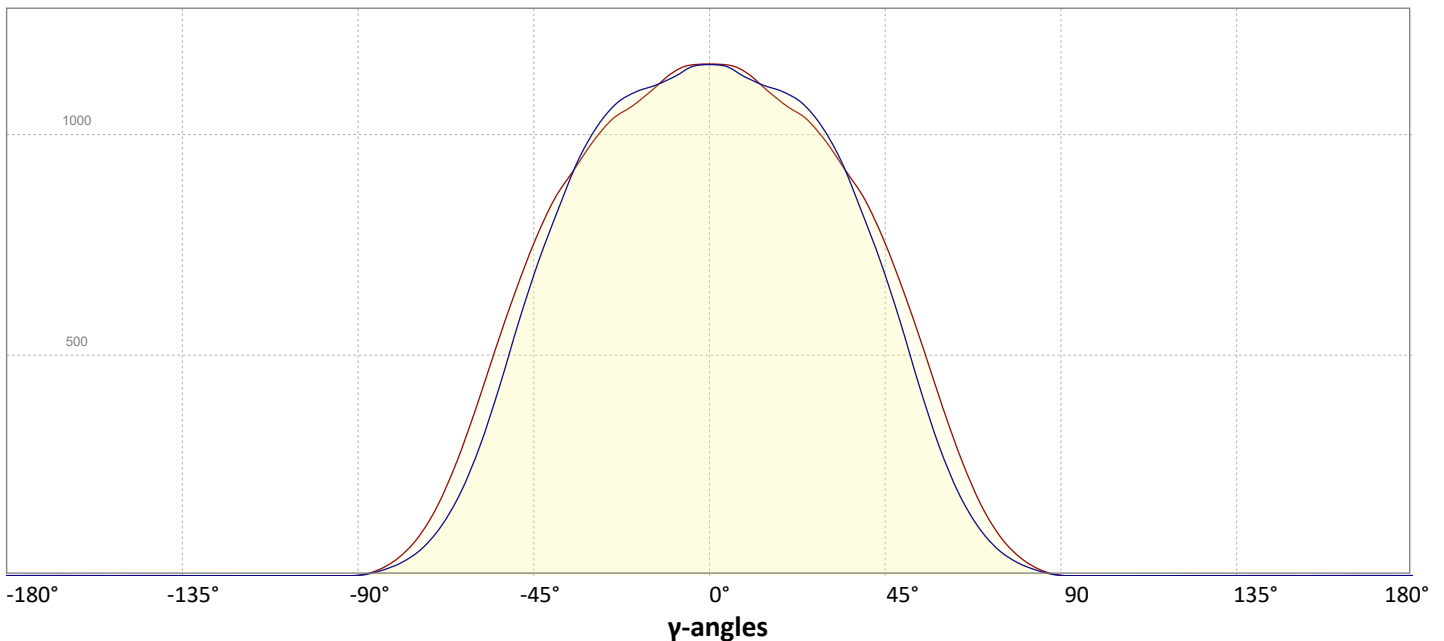
## Intensity Ratio

In 120° cone	89,2%
In 90° cone	64,6%

**C000-C180**

**C090-C270**

## Linear distribution diagram - Intensity (candela) vs $\gamma$ -angle



# Light Measurement Report

Print date: 1-7-2025

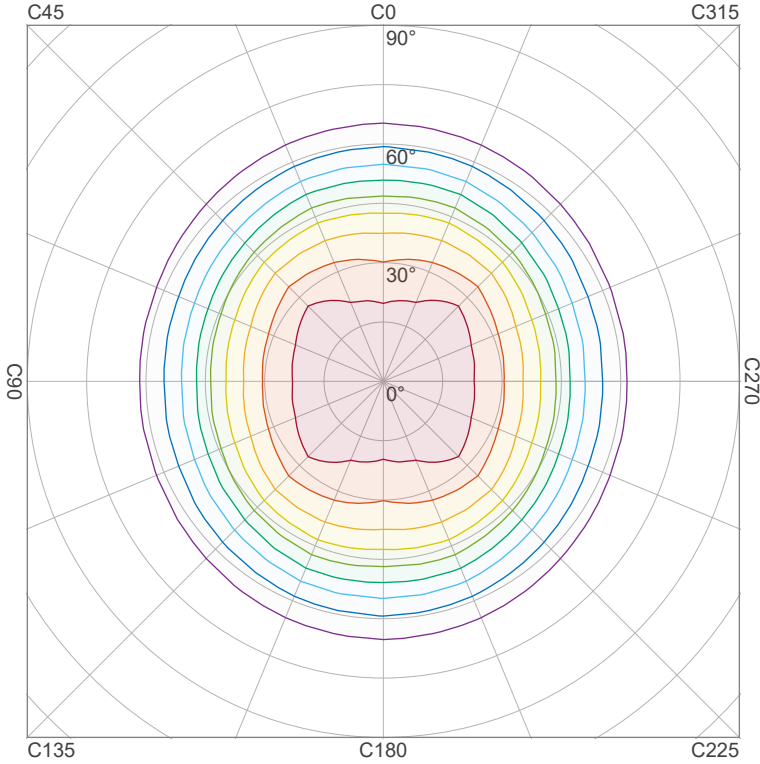
Measurement date and time: 1-7-2025 08:35:49 – Measurement no. VFR-250701-1822-MS

Measurement tracking No. and Link: [n/a](#)

Operator:



## Iso-intensity Diagram (Iso-candela)

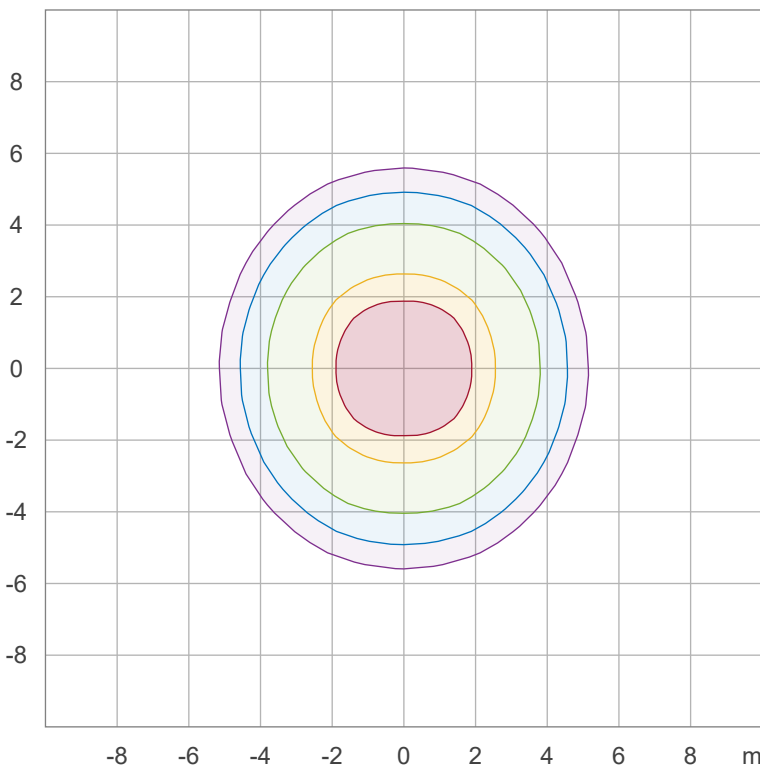


90 %	1052,6 cd
80 %	935,6 cd
70 %	818,7 cd
60 %	701,7 cd
50 %	584,8 cd
40 %	467,8 cd
30 %	350,9 cd
20 %	233,9 cd
10 %	117,0 cd

Peak intensity: 1169,5 cd

Number of c-planes: 16

## Iso-illuminance Diagram (Iso-lux)



50,0 %	64,7 lx
30,0 %	38,8 lx
10,0 %	12,9 lx
5,0 %	6,5 lx
3,0 %	3,9 lx

Peak illuminance: 129,4 lx

Mounting height: 3,0 m

Number of c-planes: 16

# Light Measurement Report

Print date: 1-7-2025

Measurement date and time: 1-7-2025 08:35:49 – Measurement no. VFR-250701-1822-MS

Measurement tracking No. and Link: [n/a](#)

Operator:

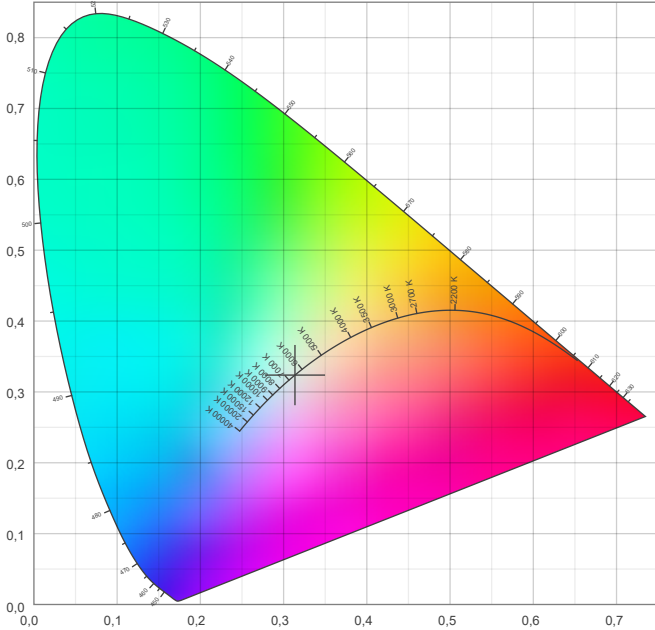


## Color details

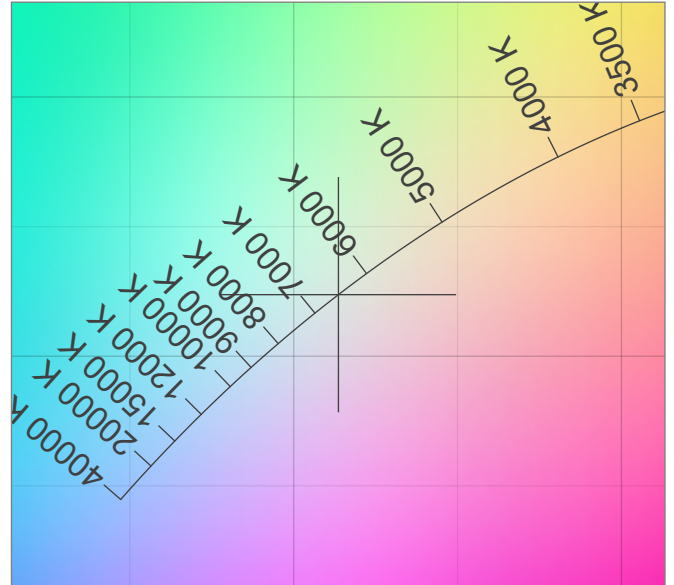
Correlated Color Temperature, Target CCT = 6500 K  
 Correlated Color Temperature, Measured CCT = 6805 K  
 Color Rendering Index CRI 82,4  
 Color Rendering Index, R9 (red component) R9 = 7,6  
 Color Rendering TM30-18 R<sub>f</sub> 82,8 – R<sub>g</sub> 95,2  
 Color Quality Scale CQS = 81,1

MacAdam Steps SDCM = 9,6  
 Color coordinates CIE 1931 (x;y) = (0,314;0,324)  
 Color coordinate CIEs 1960 (u;v) = (0,200;0,310)  
 Color deviation from BBL Duv = 0,0064  
 Color coordinate CIEs 1976 (CIELUV) (u';v') = (0,200;0,466)

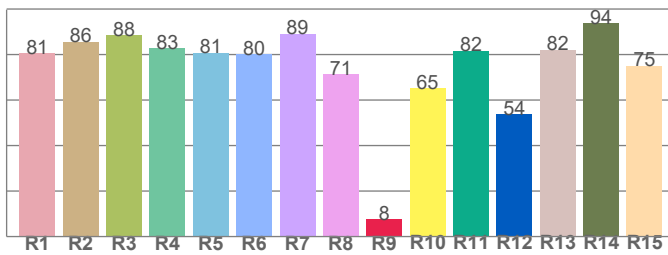
### CIE 1931



### CIE 1931 – zoomed on Planckian locus



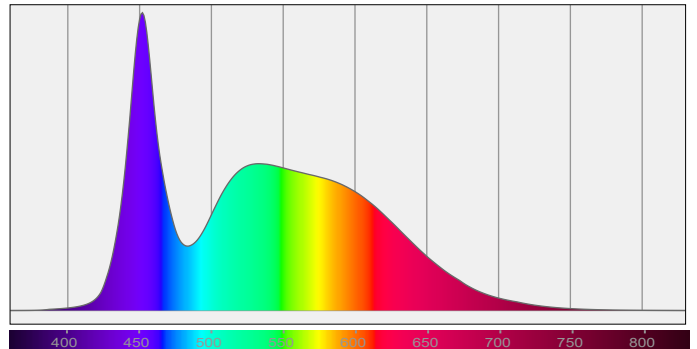
### Color Rendering Index per reference color (CIE 1995)



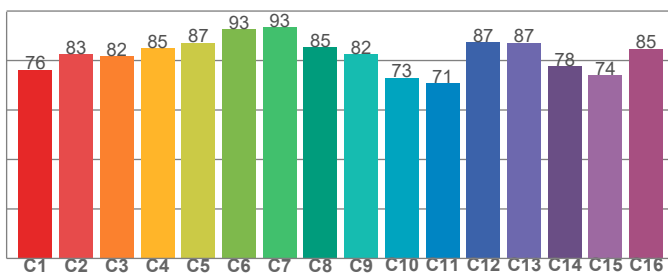
CRI R values, only R1-R8 are used to calculate final CRI value

R1	R2	R3	R4	R5	R6	R7	R8	R9	R10	R11	R12	R13	R14	R15
80,5	85,7	88,5	82,8	80,8	80,2	89,1	71,4	7,6	65,3	81,6	53,8	82,0	93,9	75,1

### Spectral power distribution (SPD) / W/nm – 0-100%



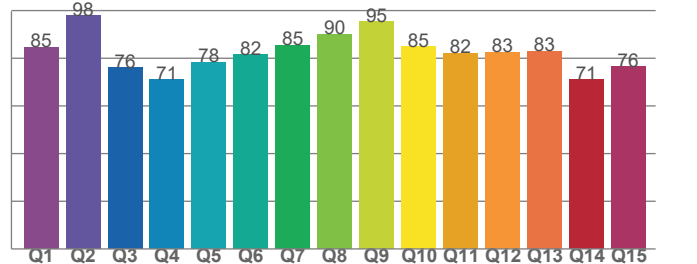
### TM30-18 R<sub>f</sub>-values per hue bin



TM30 C values, 16 binned values out of total of 99 C values

C1	C2	C3	C4	C5	C6	C7	C8	C9	C10	C11	C12	C13	C14	C15	C16
76,3	82,5	81,6	85,1	87,1	92,7	93,3	85,5	82,5	73,1	70,7	87,5	87,2	77,6	74,0	84,7

### Color Quality Scale by reference color



CQS Q values

Q1	Q2	Q3	Q4	Q5	Q6	Q7	Q8	Q9	Q10	Q11	Q12	Q13	Q14	Q15
84,7	97,9	76,0	71,1	78,3	81,5	85,4	90,0	95,3	84,9	82,1	82,5	83,0	70,9	76,4

# Light Measurement Report

Print date: 1-7-2025

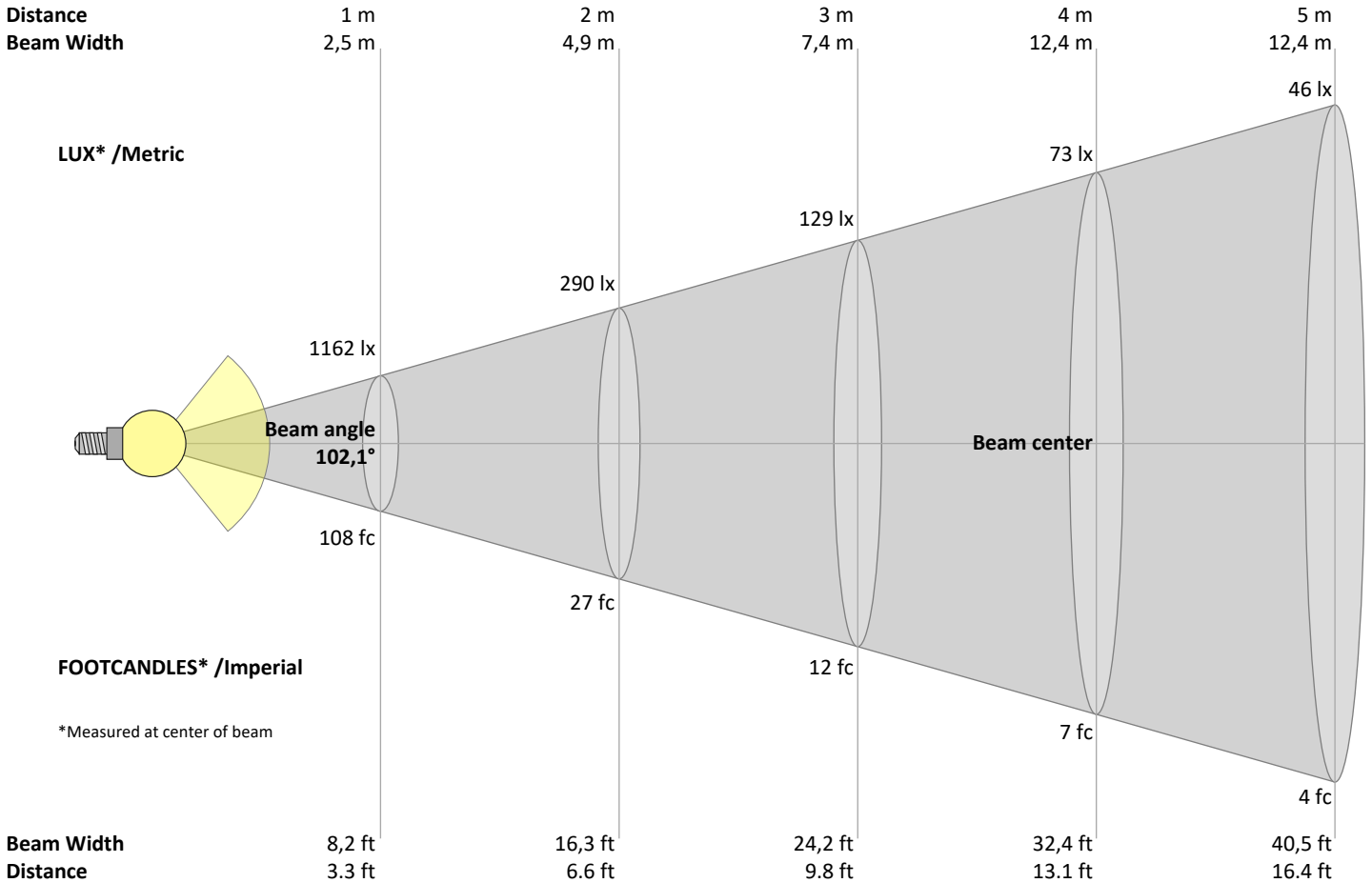
Measurement date and time: 1-7-2025 08:35:49 – Measurement no. VFR-250701-1822-MS

Measurement tracking No. and Link: [n/a](#)

Operator:



## Beam Details



### Beam intensities from 1 – 20 m

1	2	3	4	5	6	7	8	9	10	11	12	13	14	15	16	17	18	19	20	m
3,3	6,6	9,8	13,1	16,4	19,7	23	26,2	29,5	32,8	36,1	39,4	42,7	45,9	49,2	52,5	55,8	59,1	62,3	65,6	ft
1162	290	129	73	46	32	24	18	14	12	10	8	7	6	5	5	4	4	3	3	lux
107,9	27	12	6,7	4,3	3	2,2	1,7	1,3	1,1	0,9	0,7	0,6	0,6	0,5	0,4	0,4	0,3	0,3	0,3	fc

### Intensities in 0° c-plane

0°	5°	10°	15°	20°	25°	30°	35°	40°	45°	50°	55°	60°	65°	70°	75°	80°	85°	90°	95°	γ
1162	1157	1137	1098	1063	1033	982	916	848	753	637	508	375	253	153	83	39	13	1	0	cd
100%	100%	98%	95%	92%	89%	85%	79%	73%	65%	55%	44%	32%	22%	13%	7%	3%	1%	0%	0%	of 0°val

### Intensities in 90° c-plane

0°	5°	10°	15°	20°	25°	30°	35°	40°	45°	50°	55°	60°	65°	70°	75°	80°	85°	90°	95°	γ
1162	1150	1127	1108	1091	1058	999	912	801	679	541	396	268	169	99	53	26	10	1	0	cd
100%	99%	97%	95%	94%	91%	86%	79%	69%	58%	47%	34%	23%	15%	9%	5%	2%	1%	0%	0%	of 0°val

### Intensities in 180° c-plane

0°	5°	10°	15°	20°	25°	30°	35°	40°	45°	50°	55°	60°	65°	70°	75°	80°	85°	90°	95°	γ
1162	1157	1137	1098	1063	1033	982	916	848	753	637	508	375	253	153	83	39	13	1	0	cd
100%	100%	98%	95%	92%	89%	85%	79%	73%	65%	55%	44%	32%	22%	13%	7%	3%	1%	0%	0%	of 0°val

### Intensities in 270° c-plane

0°	5°	10°	15°	20°	25°	30°	35°	40°	45°	50°	55°	60°	65°	70°	75°	80°	85°	90°	95°	γ
1162	1150	1127	1108	1091	1058	999	912	801	679	541	396	268	169	99	53	26	10	1	0	cd
100%	99%	97%	95%	94%	91%	86%	79%	69%	58%	47%	34%	23%	15%	9%	5%	2%	1%	0%	0%	of 0°val

# Light Measurement Report

Print date: 1-7-2025

Measurement date and time: 1-7-2025 08:35:49 – Measurement no. VFR-250701-1822-MS

Measurement tracking No. and Link: [n/a](#)

Operator:



## Light Planning – UGR table

Uncorrected, comprehensive UGR table according to 117-1995

Reflectances		70	70	50	50	30	70	70	50	50	30
	ρ Ceiling	70	70	50	50	30	70	70	50	50	30
	ρ Walls	50	30	50	30	30	50	30	50	30	30
	ρ Floor	20	20	20	20	20	20	20	20	20	20
Room size		Viewed Crosswise					Viewed Endwise				
H = mounting height above eye level		(Viewing direction orthogonal to lamp length axis)					(Viewing direction parallel to lamp length axis)				
X	Y										
2H	2H	28,5	29,5	28,7	29,8	30,1	27,2	28,3	27,4	28,6	28,8
	3H	29,0	30,1	29,4	30,4	30,6	27,5	28,6	27,9	28,9	29,1
	4H	29,1	30,2	29,5	30,4	30,7	27,5	28,6	27,9	28,9	29,1
	6H	29,2	30,1	29,5	30,4	30,8	27,6	28,5	27,9	28,8	29,2
	8H	29,2	30,1	29,5	30,4	30,8	27,6	28,5	27,9	28,8	29,2
	12H	29,2	30,0	29,5	30,4	30,8	27,5	28,4	27,9	28,7	29,2
4H	2H	28,6	29,6	29,0	29,9	30,2	27,5	28,6	27,9	28,9	29,1
	3H	29,3	30,2	29,7	30,5	31,0	28,0	28,9	28,4	29,2	29,7
	4H	29,4	30,2	29,9	30,7	31,2	28,0	28,8	28,5	29,2	29,8
	6H	29,5	30,3	30,0	30,7	31,0	28,0	28,8	28,5	29,2	29,5
	8H	29,5	30,2	30,0	30,6	31,0	28,0	28,7	28,5	29,1	29,5
	12H	29,5	30,1	30,0	30,5	31,0	28,0	28,6	28,5	29,0	29,5
8H	4H	29,4	30,1	29,9	30,5	30,9	28,0	28,7	28,6	29,1	29,5
	6H	29,6	30,1	30,1	30,5	31,1	28,1	28,6	28,6	29,1	29,6
	8H	29,6	30,0	30,1	30,6	31,2	28,2	28,6	28,7	29,1	29,7
	12H	29,6	30,0	30,2	30,5	31,1	28,1	28,5	28,7	29,0	29,6
12H	4H	29,4	30,0	29,9	30,4	30,8	28,0	28,6	28,5	29,0	29,5
	6H	29,6	30,0	30,1	30,5	31,1	28,1	28,6	28,6	29,1	29,7
	8H	29,6	29,9	30,2	30,4	31,1	28,1	28,5	28,7	29,0	29,6

### Variations with the observer position for the luminaire spacings, S:

S = 1.0H	0,2 / -0,3	0,4 / -0,6
S = 1.5H	0,8 / -1,2	0,9 / -1,8
S = 2.0H	1,8 / -2,6	2,0 / -3,3

## Coefficients of Utilization

Ceiling reflectance	80			70			50			30			10			0		
Wall reflectance	70	50	30	10	70	50	30	10	50	30	10	50	30	10	50	30	10	0
Floor reflectance	20	20	20	20	20	20	20	20	20	20	20	20	20	20	20	20	20	0
RCR	(RCR: Room Cavity Ratio)																	
	Room Values are expressed as percentage of Lumen delivered to the task surface																	
0	119	119	119	119	116	116	116	116	111	111	106	106	106	102	102	102	100	100
1	111	107	103	100	108	104	101	98	100	97	95	96	94	92	93	91	89	87
2	102	95	89	84	99	93	87	83	89	85	81	86	82	79	83	80	77	75
3	94	84	77	71	91	83	76	71	80	74	69	77	72	68	75	71	67	65
4	86	75	67	61	84	74	67	61	72	65	60	69	64	59	67	63	59	57
5	80	68	60	53	78	67	59	53	65	58	53	63	57	52	61	56	52	50
6	74	61	53	47	72	61	53	47	59	52	47	57	51	46	56	50	46	44
7	69	56	48	42	67	55	47	42	54	47	41	52	46	41	51	45	41	39
8	64	51	43	38	62	50	43	37	49	42	37	48	42	37	47	41	37	35
9	60	47	39	34	58	46	39	34	45	38	34	44	38	33	43	38	33	32
10	56	43	36	31	55	43	36	31	42	35	31	41	35	30	40	34	30	29

# Light Measurement Report

Print date: 1-7-2025

Measurement date and time: 1-7-2025 08:35:49 – Measurement no. VFR-250701-1822-MS

Measurement tracking No. and Link: [n/a](#)

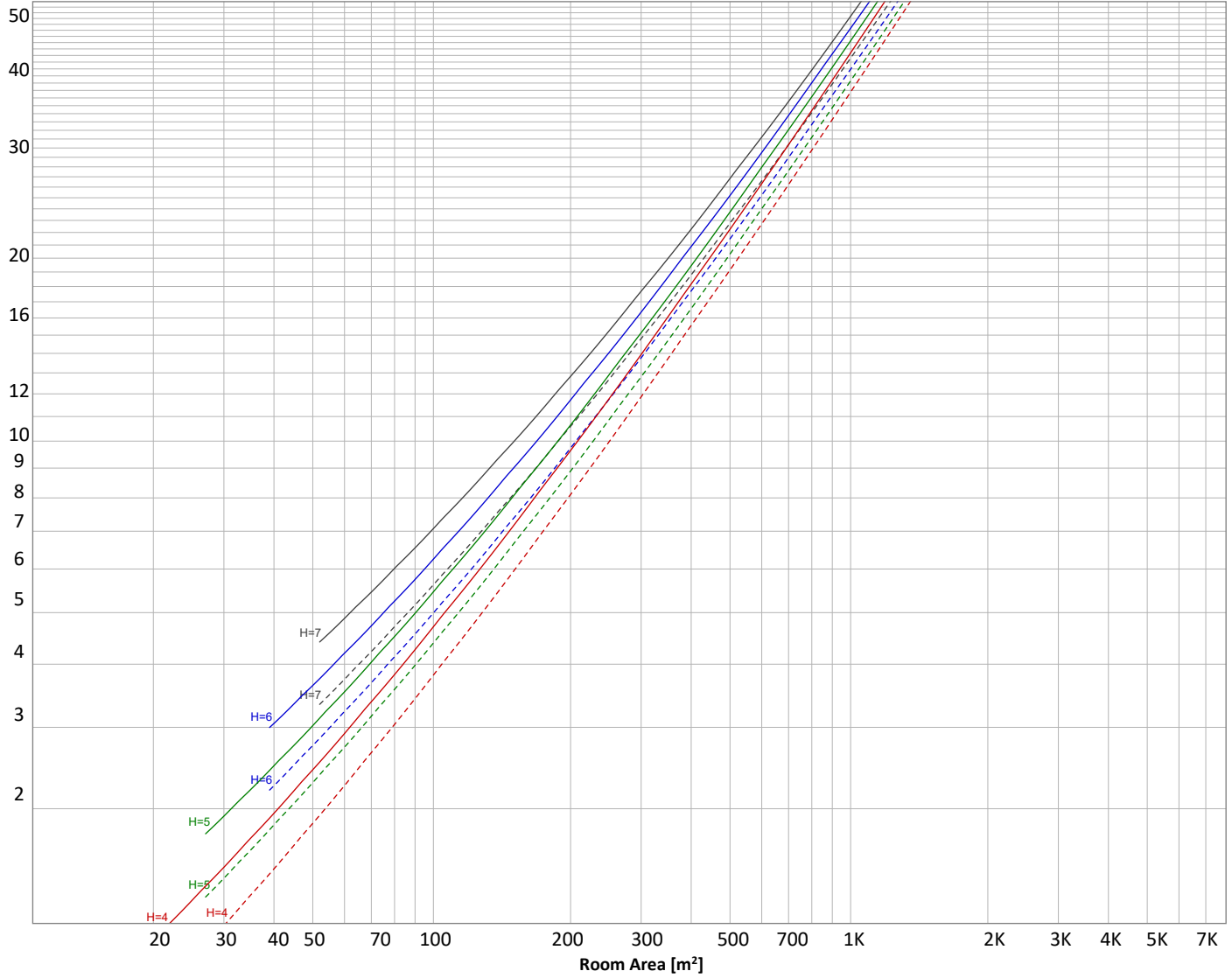
Operator:



## Luminaire budgetary diagram

Uncorrected, comprehensive UGR table according to 117-1995

LAMPS (number of lamps)



### Conditions

H = Room height	Flux = 2792 lm				
H <sub>down</sub> = Lamp distance from ceiling =	0.00 m	Line type	Ceiling reflectance	ρ(%) Wall reflectance	Floor reflectance
H <sub>work</sub> = Work area height from floor =	0.00 m	-----	70	50	30
E <sub>work</sub> = Average lux on work area =	100 lx	—————	50	30	20

### Zonal Lumen Summary

0°-10°	10°-20°	20°-30°	30°-40°	40°-50°	50°-60°	60°-70°	70°-80°	80°-90°
110 lm	318 lm	490 lm	589 lm	568 lm	415 lm	212 lm	73,9 lm	14,1 lm
90°-100°	100°-110°	110°-120°	120°-130°	130°-140°	140°-150°	150°-160°	160°-170°	170°-180°
0,298 lm	0,193 lm	0,217 lm	0,255 lm	0,271 lm	0,239 lm	0,182 lm	0,111 lm	0,037 lm

# Light Measurement Report

Print date: 1-7-2025

Measurement date and time: 1-7-2025 08:35:49 – Measurement no. VFR-250701-1822-MS

Measurement tracking No. and Link: [n/a](#)

Operator:



## Outdoor Light Planning

### Lumen per Zone

Zone (γ)	Lumen	% Total
0-10°	{LUM00-10} lm	#VALUE!
10-20°	{LUM10-20} lm	#VALUE!
20-30°	{LUM20-30} lm	#VALUE!
30-40°	{LUM30-40} lm	#VALUE!
40-50°	{LUM40-50} lm	#VALUE!
50-60°	{LUM50-60} lm	#VALUE!
60-70°	{LUM60-70} lm	#VALUE!
70-80°	{LUM70-80} lm	#VALUE!
80-90°	{LUM80-90} lm	#VALUE!
90-100°	{LUM90-100} lm	#VALUE!
100-110°	{LUM100-110} lm	#VALUE!
110-120°	{LUM110-120} lm	#VALUE!
120-130°	{LUM120-130} lm	#VALUE!
130-140°	{LUM130-140} lm	#VALUE!
140-150°	{LUM140-150} lm	#VALUE!
150-160°	{LUM150-160} lm	#VALUE!
160-170°	{LUM160-170} lm	#VALUE!
170-180°	{LUM170-180} lm	#VALUE!
Total	0 lm	#VALUE!

### Intensity peaks

Max intensity	{PEAK} cd
Intensity, 90°	{INT90} cd
Intensity, 0°	{INT0} cd

### Zonal Lumen summary

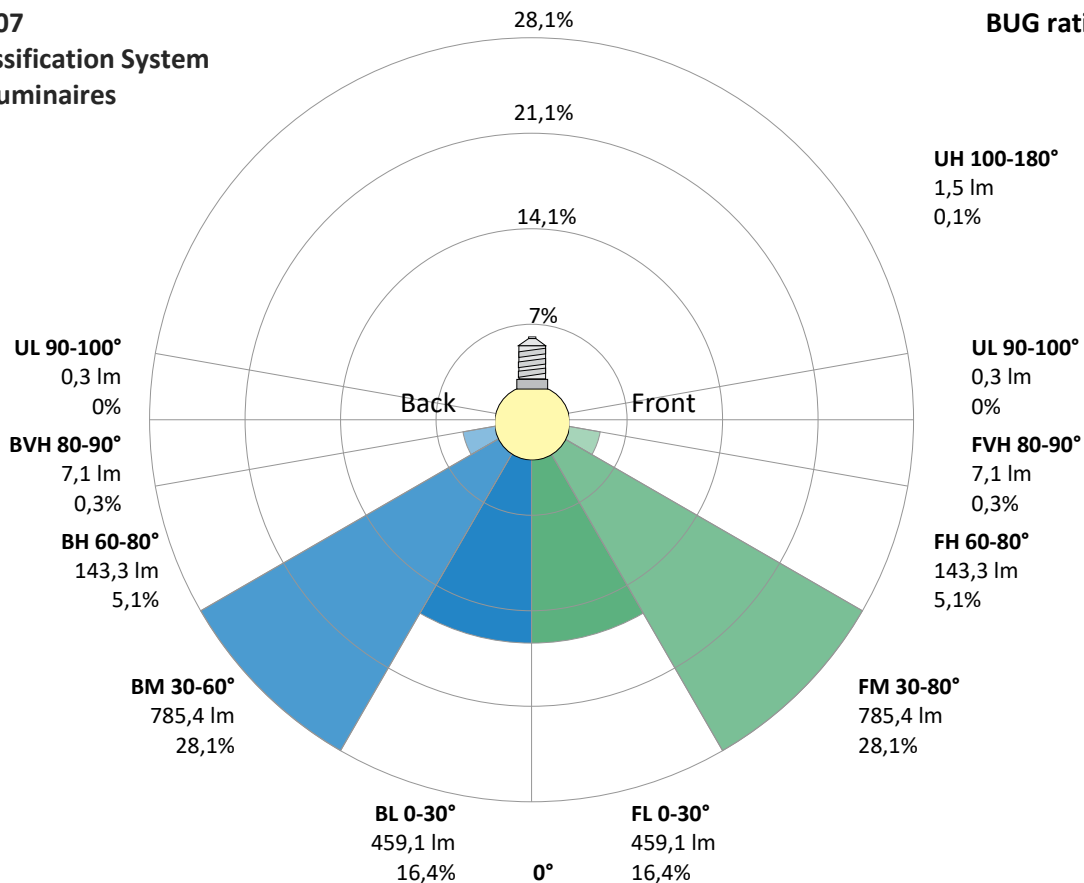
Zone (γ)	Lumen	% Total
0-30°	{LUM00-30} lm	#VALUE!
0-40°	{LUM00-40} lm	#VALUE!
0-60°	{LUM00-60} lm	#VALUE!
60-90°	{LUM60-90} lm	#VALUE!
70-100°	{LUM70-100} lm	#VALUE!
90-120°	{LUM90-120} lm	#VALUE!
0-90°	{LUM00-90} lm	#VALUE!
90-180°	{LUM90-180} lm	#VALUE!
0-180°	{LUM00-180} lm	#VALUE!

### BUG rating

	Lumen	% Total
<b>Forward light</b>		
Low(0-30°)	{BUG0} lm	#VALUE!
Medium(30-60°)	{BUG1} lm	#VALUE!
High(60-80°)	{BUG2} lm	#VALUE!
Very high(80-90°)	{BUG3} lm	#VALUE!
<b>Back light</b>		
Low(0-30°)	{BUG4} lm	#VALUE!
Medium(30-60°)	{BUG5} lm	#VALUE!
High(60-80°)	{BUG6} lm	#VALUE!
Very high(80-90°)	{BUG7} lm	#VALUE!
<b>Uplight</b>		
Low(90-100°)	{BUG8} lm	#VALUE!
High(100-180°)	{BUG9} lm	#VALUE!

## IESNA TM-15-07 Luminaire Classification System For Outdoor Luminaires

BUG rating B1 U1 G0



# Light Measurement Report

Print date: 1-7-2025

Measurement date and time: 1-7-2025 08:35:49 – Measurement no. VFR-250701-1822-MS

Measurement tracking No. and Link: [n/a](#)

Operator:

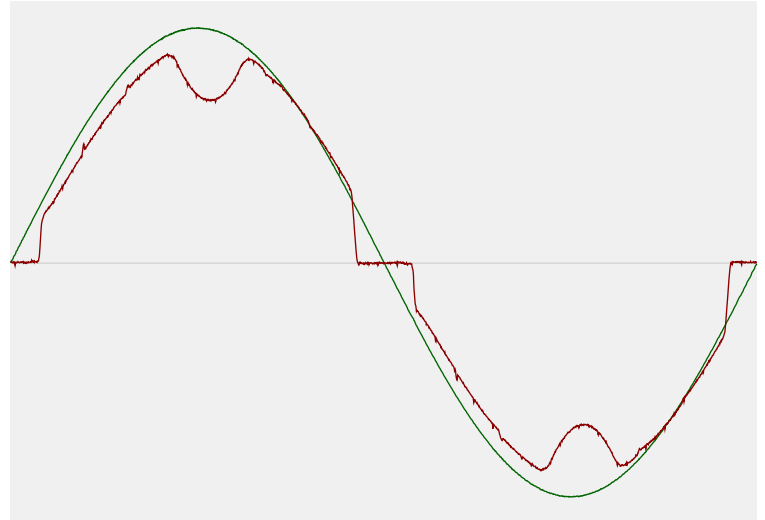


## Power Details

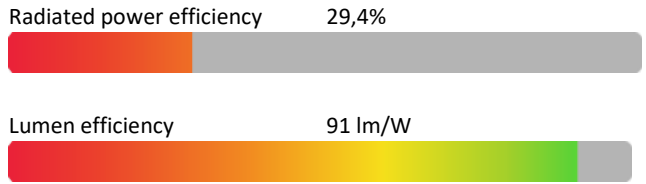
### Input Power

Power feed to light source	30,6 W
Frequency of input power	50 Hz
RMS Input voltage feed, $V_{RMS}$	230 V
RMS Input current feed, $I_{RMS}$	0,134 A
Volt-Ampere or apparent power = $V_{RMS} * I_{RMS}$	30,86 VA
Displacement factor of AC power feed	1,0
Power factor of AC current feed	0,99
Total harmonic distortion of the current	13,03%
Total harmonic distortion of the voltage	0,07%

### Input Power Curve



### Efficiency



## Stabilization Details

### Warmup Conditions

Stable period	15 min
Stable change max	2,0%
Minimum time	15 min

### Color Temperature Change

CCT start	6396 K
CCT shift	+104 K
CCT end	6500 K

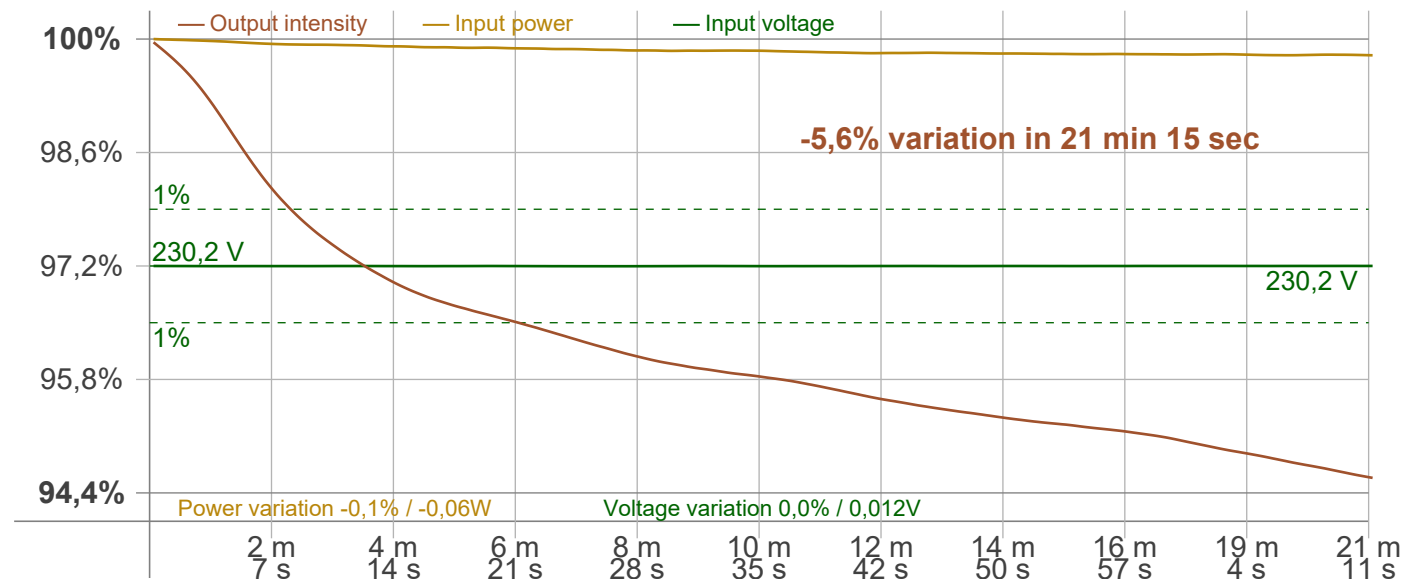
### Warmup Result

Total warmup time	Lamp stabilized in 21 min 15 sec
Warmup variation	-5,6%

### Output Change

Output start	2954 lm
Output change	-161 lm
Output end	2792 lm

### Stabilization Curve



# Light Measurement Report

Print date: 1-7-2025

Measurement date and time: 1-7-2025 08:35:49 – Measurement no. VFR-250701-1822-MS

Measurement tracking No. and Link: [n/a](#)

Operator:



## Flicker /TLA details

Flicker Meter Type: Viso Systems LabFlicker  
 Frequency of input power: 50 Hz  
 Flicker/TLA sample rate: 20000 samples/s

**Measurement time**  
 PstLM: 180 sec  
 All other indices: 1,2 sec

### Flicker indices according to Illuminating Engineering Society (IES)

Flicker frequency: 100 Hz  
 Percent Flicker: 99,91 %  
 Flicker index: 0,32

### Flicker indices according to California Energy Commission (CEC) 2016b

JA8/10 40 Hz: 0,19 %  
 JA8/10 90 Hz: 0,83 %  
 JA8/10 200 Hz: 105,43 %  
 JA8/10 400 Hz: 100,65 %  
 JA8/10 1000 Hz: 102,3 %

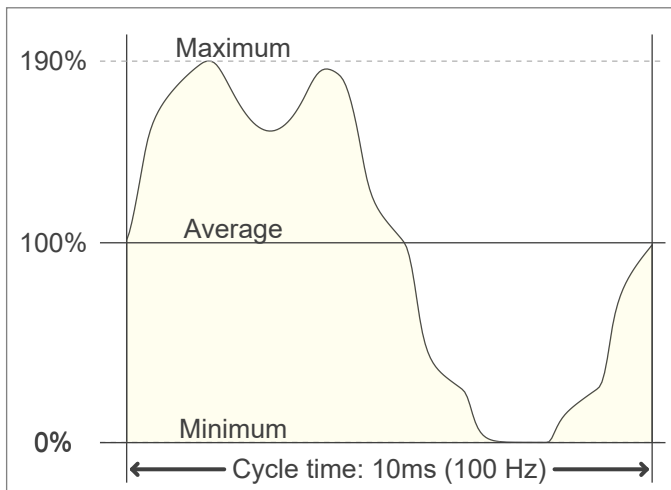
### TLA indices (re IEC TR 61547-1, IEC 61000-3-3 and IEC 61000-4-15)

PstLM value (F < 80 Hz): 0,07  
 SVM value (80 < F < 2000 Hz): 3,75

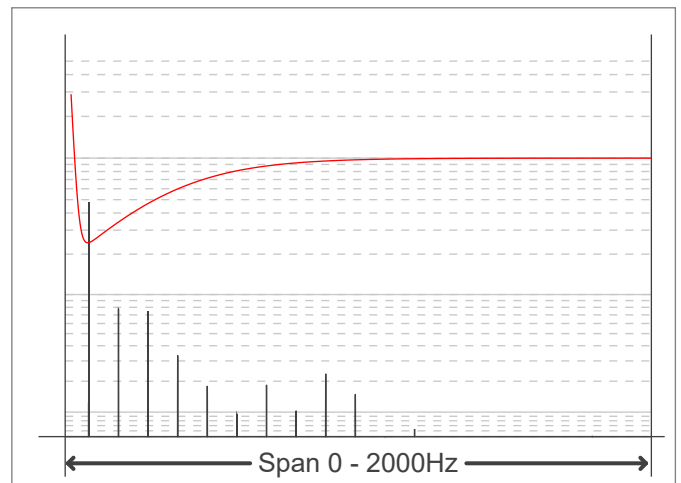
### Flicker indices according to Lighting Research Center (2015)

Perception metric, Assist Mp: 0,03

Flicker frame (frame of one flicker period in time domain)



Flicker FFT (flicker curve in frequency domain)



IEEE 1789 Frequency/modulation plot

