

Light efficiency:



Light quality:



Color temperature:

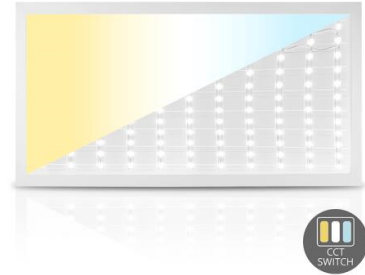


Output: 5260 lm

Peak: 1791 cd

Power: 45,0 W

PF: 0,97



Tracking number: [VT241007-009762](#)

Product name:

848247-4000K

Item number:

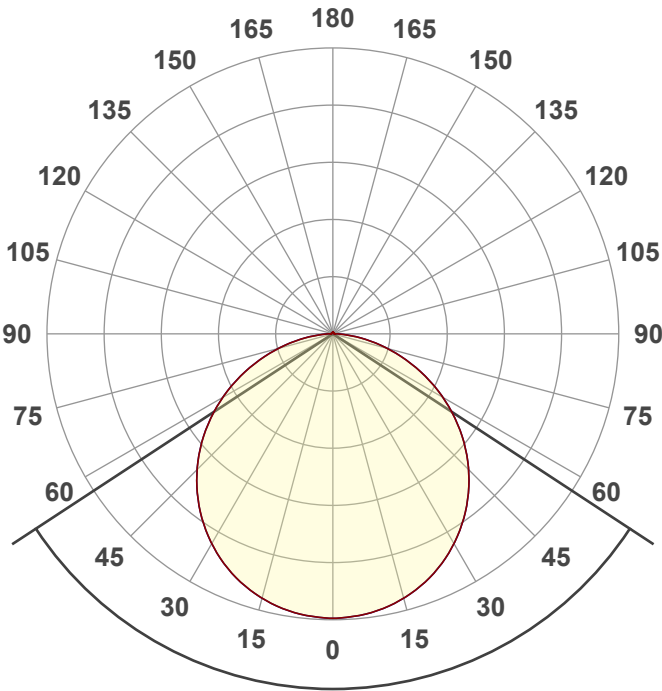
848247-4000K

Date and time:

7-10-2024 13:38:40

Description:

BACK-LIT LED PANEEL | LEDA | 120x60CM | 50W | CCT-SWITCH

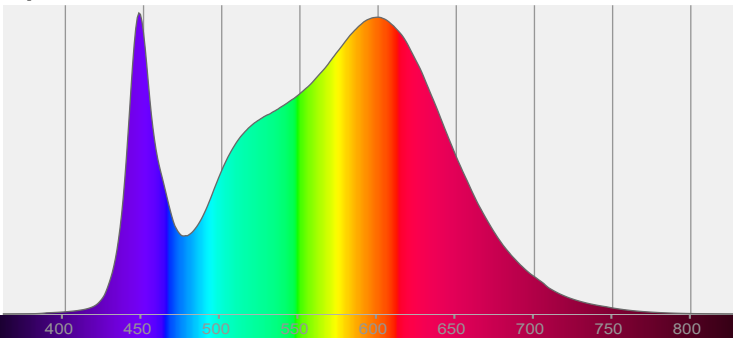


Beam angle **113,5°**

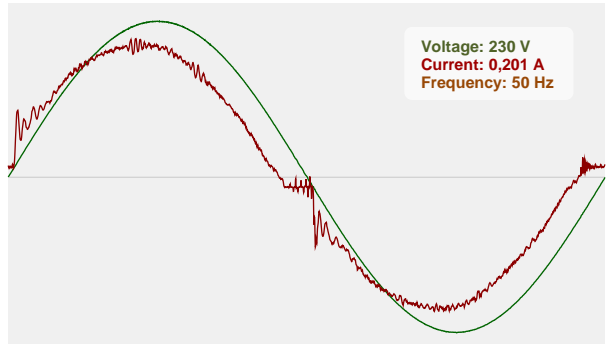


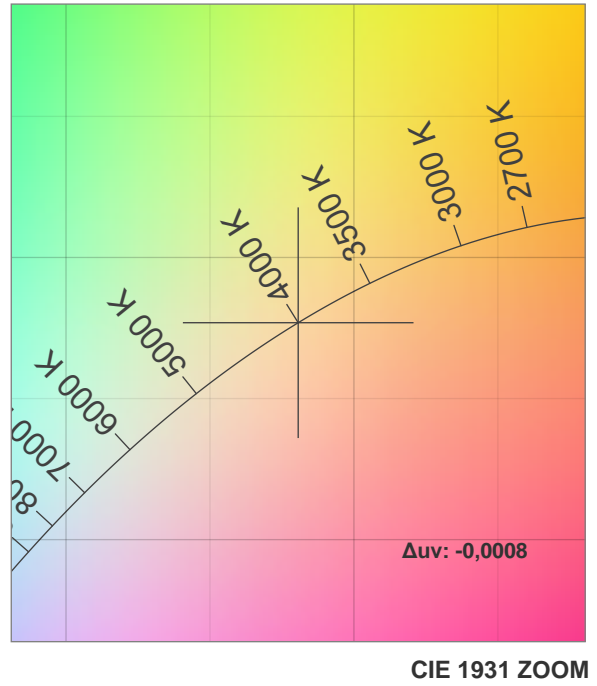
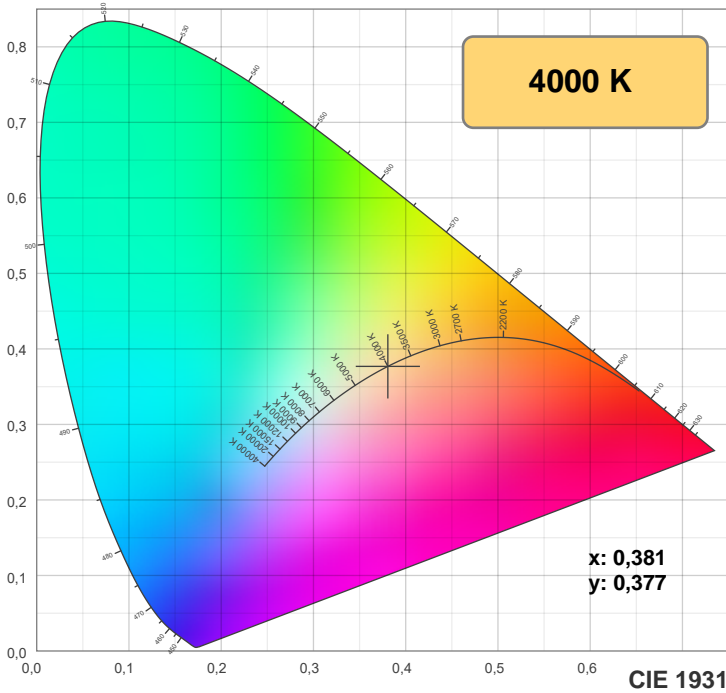
CIE 1931
x: 0,381
y: 0,377

Spectra

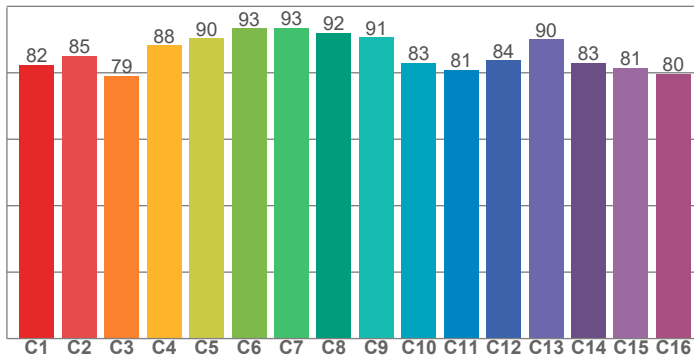


Power

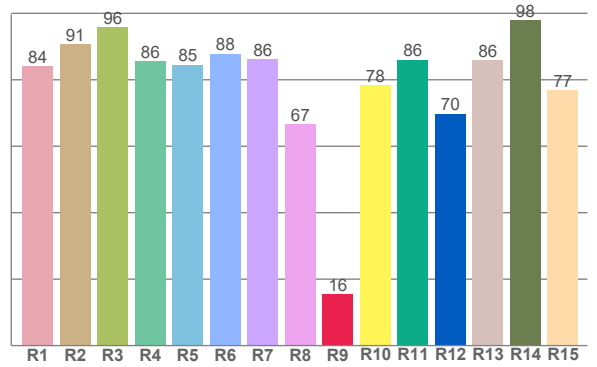




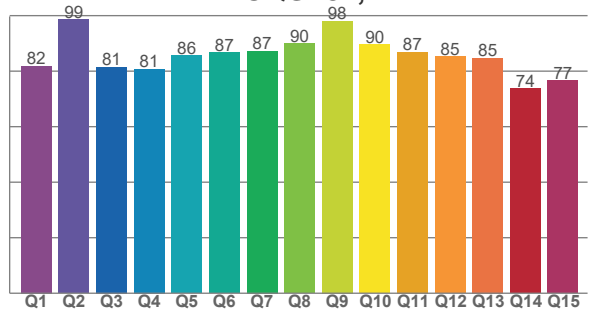
TM-30: 85,9



CRI: 85,2 (R1-R8)



CQS: 84,4



CRI R values, only R1-R8 are used to calculate final CRI value

R1	R2	R3	R4	R5	R6	R7	R8	R9	R10	R11	R12	R13	R14	R15
84,1	90,7	95,9	85,5	84,5	87,9	86,3	66,6	15,6	78,5	86,1	69,8	85,8	97,9	77,0

TM30 C values, 16 binned values out of total of 99 C values

C1	C2	C3	C4	C5	C6	C7	C8	C9	C10	C11	C12	C13	C14	C15	C16
82,3	85,1	79,1	88,3	90,4	93,3	93,5	92,0	90,7	83,1	81,0	83,8	90,1	82,9	81,5	79,7

CQS Q values

Q1	Q2	Q3	Q4	Q5	Q6	Q7	Q8	Q9	Q10	Q11	Q12	Q13	Q14	Q15
81,9	98,6	81,4	80,8	85,6	86,7	87,3	89,9	98,1	89,5	87,0	85,3	84,8	73,8	76,6

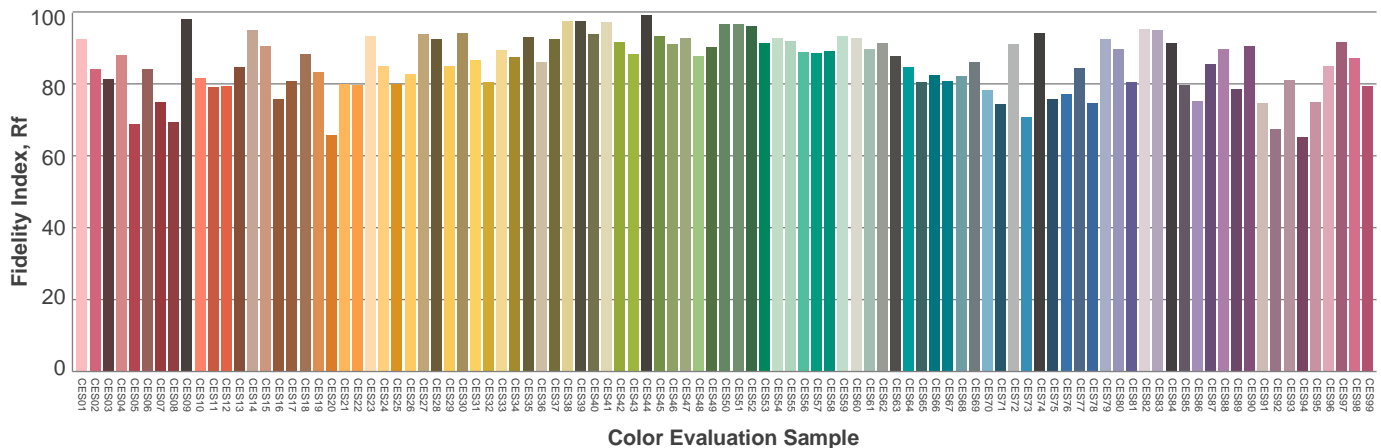
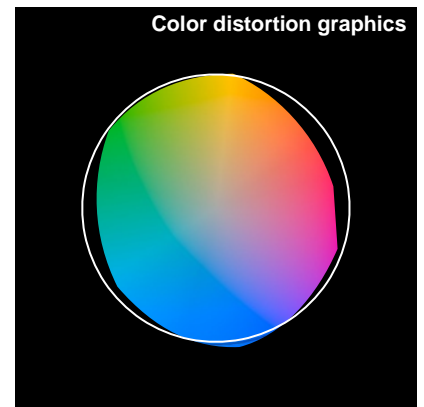
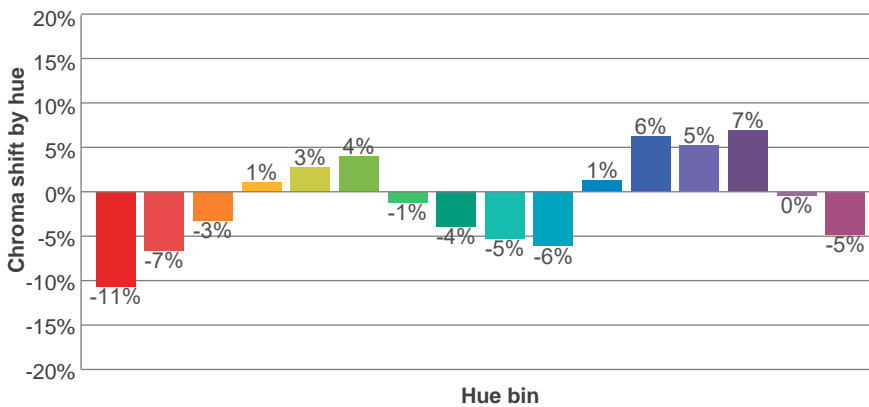
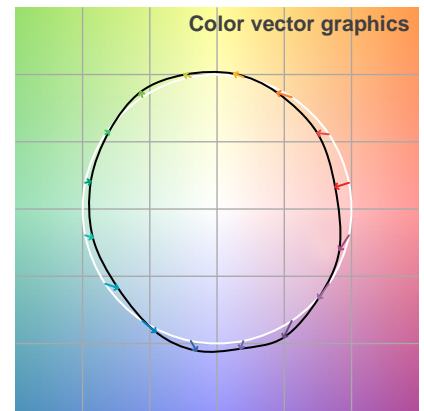
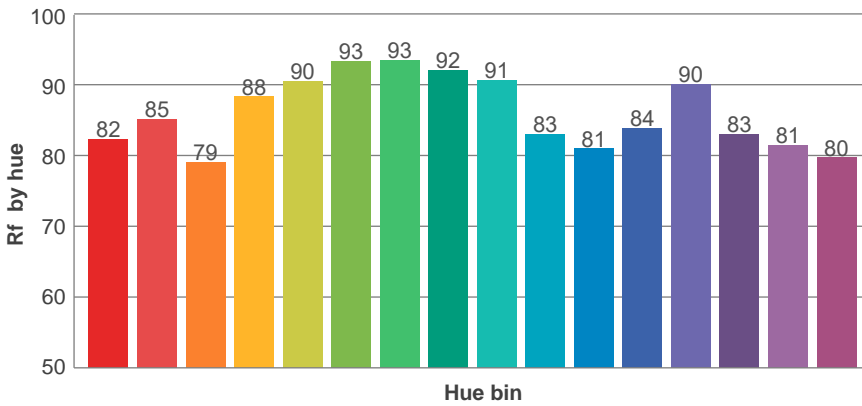
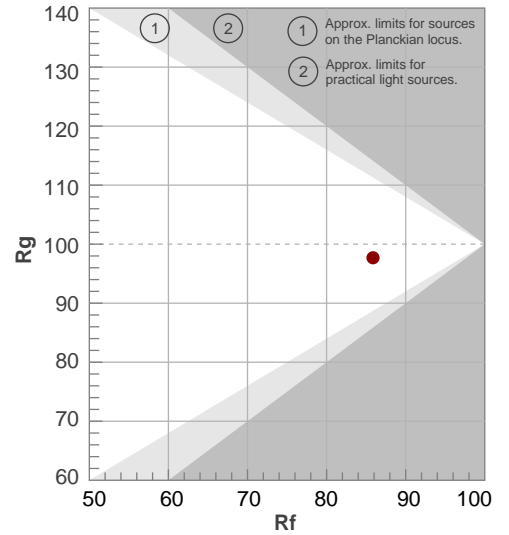
Color parameters

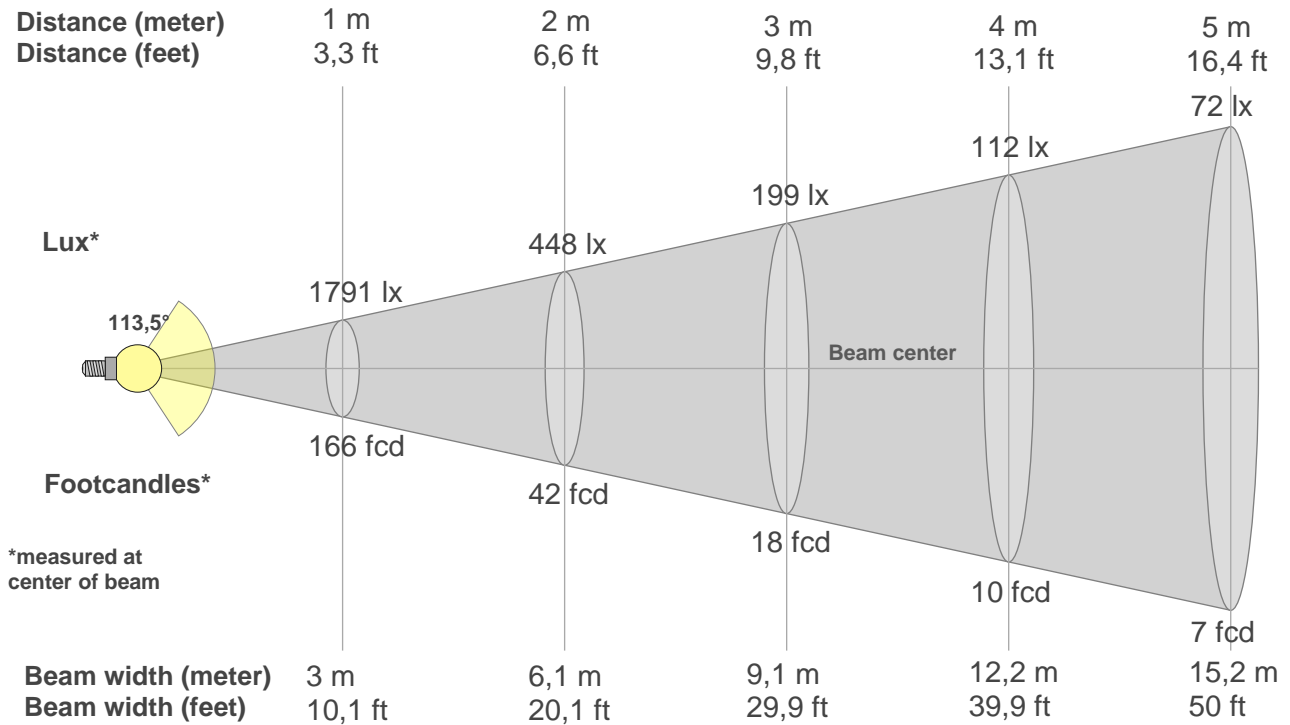
Color temperature	Color rendering index	Red component	Color fidelity	Color gamut	Color quality scale	Color coordinate cie 1931	Color coordinate cie 1931	Color coordinate	Color coordinate	Color deviation from black body
CCT	CRI	CRI R9	TM30 Rf	TM30 Rg	CQS	x	y	u	v	Δuv
4000 K	85,2	15,6	85,9	97,7	84,4	0,381	0,377	0,225	0,334	-0,0008

Rf 85,9
Fidelity index Rf

Rg 97,7
Gamut index Rg

Hue Bin	R _f	Shifts (%)	
		Chroma	Hue
1	82	-11%	-1%
2	85	-7%	6%
3	79	-3%	11%
4	88	1%	7%
5	90	3%	4%
6	93	4%	-1%
7	93	-1%	-4%
8	92	-4%	-2%
9	91	-5%	3%
10	83	-6%	8%
11	81	1%	13%
12	84	6%	5%
13	90	5%	-3%
14	83	7%	-12%
15	81	0%	-13%
16	80	-5%	-12%





Beam intensities from 1-20m

1m	2m	3m	4m	5m	6m	7m	8m	9m	10m	11m	12m	13m	14m	15m	16m	17m	18m	19m	20m
3,3ft	6,6ft	9,8ft	13,1ft	16,4ft	19,7ft	23ft	26,2ft	29,5ft	32,8ft	36,1ft	39,4ft	42,7ft	45,9ft	49,2ft	52,5ft	55,8ft	59,1ft	62,3ft	65,6ft
1791lx	448lx	199lx	112lx	72lx	50lx	37lx	28lx	22lx	18lx	15lx	12lx	11lx	9lx	8lx	7lx	6lx	6lx	5lx	4lx
166,4fcd	41,6fcd	18,5fcd	10,4fcd	6,7fcd	4,6fcd	3,4fcd	2,6fcd	2,1fcd	1,7fcd	1,4fcd	1,2fcd	1fcd	0,8fcd	0,7fcd	0,7fcd	0,6fcd	0,5fcd	0,5fcd	0,4fcd

Intensities in 0° c-plane

0°	5°	10°	15°	20°	25°	30°	35°	40°	45°	50°	55°	60°	65°	70°	75°	80°	85°	90°	95°
1791	1783	1761	1723	1672	1606	1525	1432	1326	1209	1082	944	800	652	502	356	221	103	30	8
100%	100%	98%	96%	93%	90%	85%	80%	74%	67%	60%	53%	45%	36%	28%	20%	12%	6%	2%	0%

Intensities in 90° c-plane

0°	5°	10°	15°	20°	25°	30°	35°	40°	45°	50°	55°	60°	65°	70°	75°	80°	85°	90°	95°
1791	1783	1761	1723	1672	1606	1525	1432	1326	1209	1082	944	800	652	502	356	221	103	30	8
100%	100%	98%	96%	93%	90%	85%	80%	74%	67%	60%	53%	45%	36%	28%	20%	12%	6%	2%	0%

Intensities in 180° c-plane

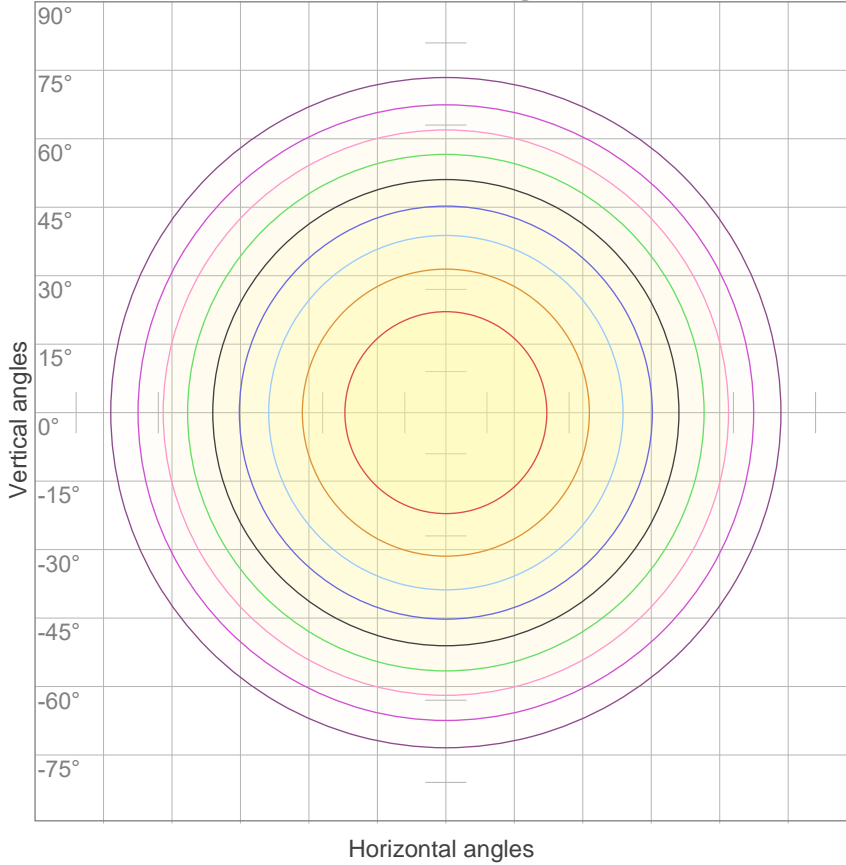
0°	5°	10°	15°	20°	25°	30°	35°	40°	45°	50°	55°	60°	65°	70°	75°	80°	85°	90°	95°
1791	1783	1761	1723	1672	1606	1525	1432	1326	1209	1082	944	800	652	502	356	221	103	30	8
100%	100%	98%	96%	93%	90%	85%	80%	74%	67%	60%	53%	45%	36%	28%	20%	12%	6%	2%	0%

Intensities in 270° c-plane

0°	5°	10°	15°	20°	25°	30°	35°	40°	45°	50°	55°	60°	65°	70°	75°	80°	85°	90°	95°
1791	1783	1761	1723	1672	1606	1525	1432	1326	1209	1082	944	800	652	502	356	221	103	30	8
100%	100%	98%	96%	93%	90%	85%	80%	74%	67%	60%	53%	45%	36%	28%	20%	12%	6%	2%	0%

Beam angle 50%	Field angle 10%	Cutoff angle 2,5%	Intensity ratio in 120° cone	Intensity ratio in 90° cone
113,5°	163,1°	177,2°	77,4%	52,5%

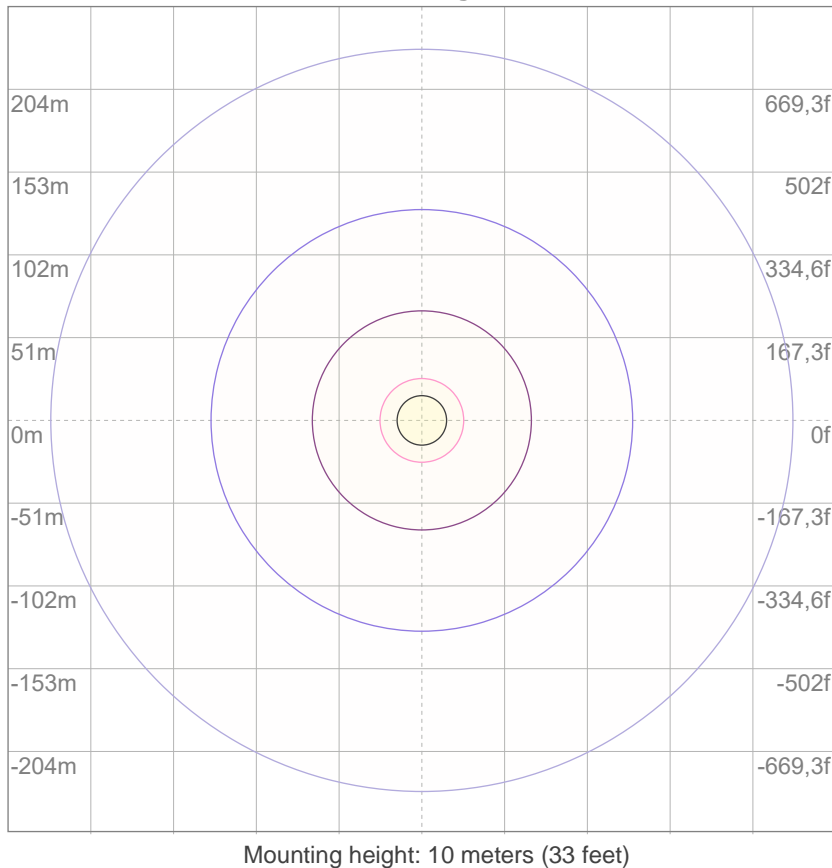
iso-candela diagram



10%	179 cd
20%	358 cd
30%	537 cd
40%	716 cd
50%	896 cd
60%	1075 cd
70%	1254 cd
80%	1433 cd
90%	1612 cd

Conditions:
 Number of c-planes: 12
 Candela at center: 1791 cd

iso-lux diagram



3%	0,537 lx
5%	0,896 lx
10%	1,79 lx
30%	5,37 lx
50%	8,96 lx

Conditions:
 Number of c-planes: 12
 Lux at center: 17,9 lx

Lux distribution on a surface when lamp is mounted at 10 meters from the surface.

Glare evaluation according to UGR

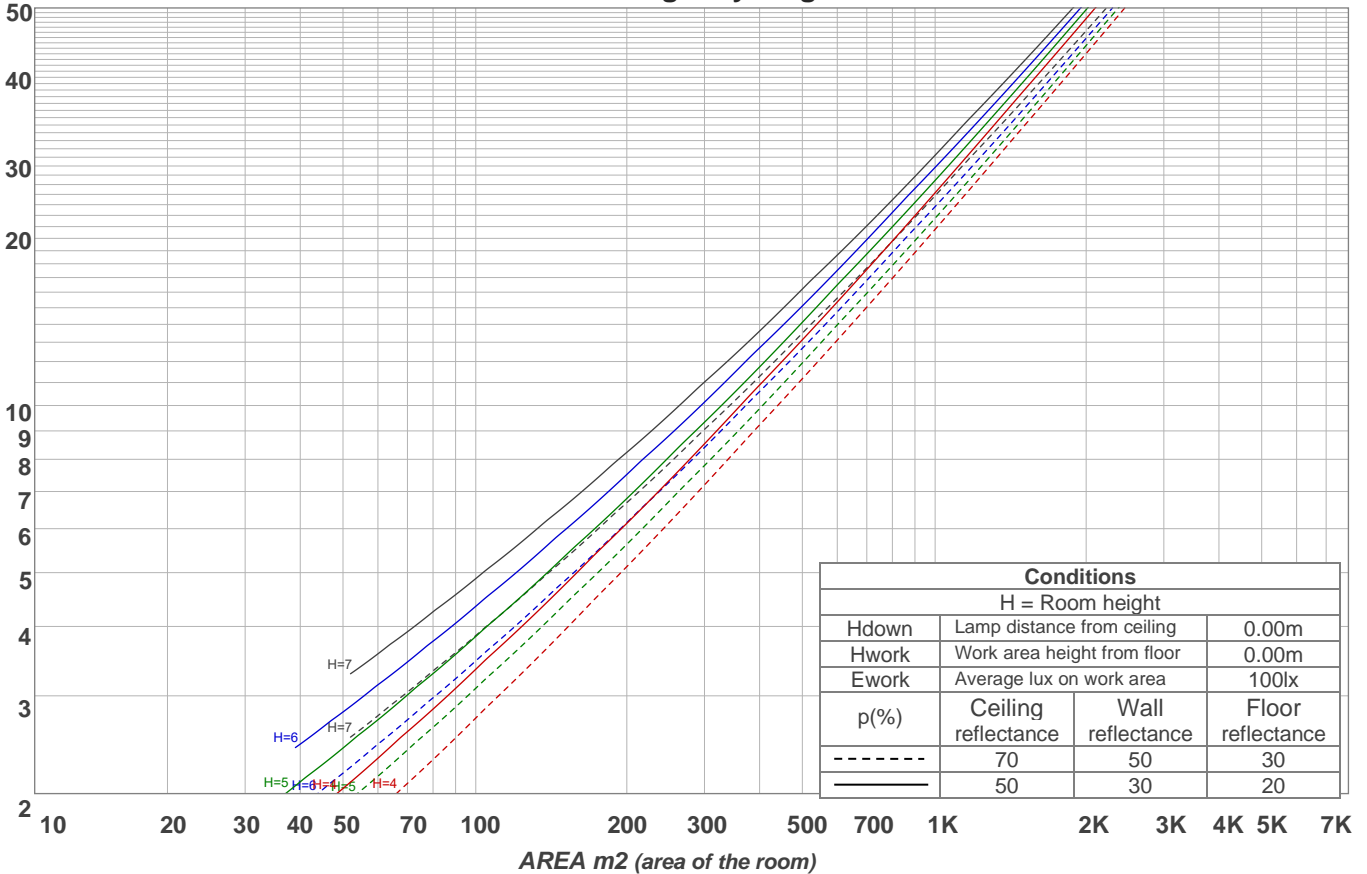
p Ceiling	70	70	50	50	30	70	70	50	50	30	
p Walls	50	30	50	30	30	50	30	50	30	30	
p Floor	20	20	20	20	20	20	20	20	20	20	
Room size X Y	Viewing direction at right angles to lamp axis					Viewing direction parallel to lamp axis					
2H	2H	15,8	17,0	16,1	17,4	17,6	15,8	17,0	16,0	17,3	17,6
	3H	17,3	18,6	17,7	18,9	19,1	17,3	18,5	17,7	18,8	19,0
	4H	17,9	19,2	18,4	19,4	19,7	17,9	19,1	18,3	19,4	19,7
	6H	18,5	19,6	18,8	19,9	20,2	18,4	19,5	18,8	19,8	20,2
	8H	18,7	19,7	19,0	20,0	20,4	18,6	19,6	18,9	19,9	20,4
12H	18,8	19,8	19,1	20,1	20,6	18,7	19,7	19,1	20,0	20,5	
4H	2H	16,4	17,6	16,8	17,9	18,2	16,4	17,6	16,8	17,9	18,2
	3H	18,2	19,2	18,6	19,6	20,0	18,2	19,2	18,6	19,5	20,0
	4H	18,9	19,8	19,4	20,3	20,8	18,9	19,8	19,3	20,2	20,8
	6H	19,5	20,4	20,0	20,8	21,2	19,5	20,3	20,0	20,7	21,1
	8H	19,7	20,5	20,2	20,9	21,3	19,7	20,5	20,2	20,9	21,3
12H	19,9	20,6	20,4	21,0	21,5	19,8	20,5	20,3	20,9	21,4	
8H	4H	19,2	20,0	19,7	20,4	20,8	19,2	20,0	19,7	20,3	20,7
	6H	20,0	20,6	20,5	21,1	21,6	19,9	20,5	20,4	21,0	21,6
	8H	20,3	20,8	20,8	21,4	22,0	20,2	20,8	20,8	21,3	22,0
	12H	20,5	21,0	21,1	21,5	22,1	20,5	20,9	21,0	21,4	22,1
12H	4H	19,2	19,9	19,7	20,3	20,8	19,2	19,8	19,7	20,3	20,8
	6H	20,0	20,6	20,6	21,1	21,8	20,0	20,5	20,5	21,1	21,7
	8H	20,4	20,8	21,0	21,4	22,0	20,3	20,8	20,9	21,3	21,9
Variation of the observer position for the luminaire distance S											
S = 1.0H	0,1 / -0,1					0,1 / -0,1					
S = 1.5H	0,1 / -0,2					0,1 / -0,2					
S = 2.0H	0,4 / -0,4					0,4 / -0,5					
CIE 117-1995. Corrected glare indices referring to 5260 lm total luminous flux											

Coefficients of Utilization

Ceiling reflectance	80				70				50			30			10			0
	70	50	30	10	70	50	30	10	50	30	10	50	30	10	50	30	10	0
Wall reflectance	70	50	30	10	70	50	30	10	50	30	10	50	30	10	50	30	10	0
Floor reflectance	20	20	20	20	20	20	20	20	20	20	20	20	20	20	20	20	20	0
RCR	(RCR: Room Cavity Ratio) Room Values are expressed as percentage of Lumens delivered to the task surface																	
0	119	119	119	119	116	116	116	116	111	111	111	106	106	106	101	101	101	99
1	108	103	99	95	105	101	97	93	97	93	90	92	90	87	89	87	85	82
2	98	90	83	77	96	88	82	76	84	79	74	81	76	72	78	74	71	68
3	90	79	71	64	87	77	69	63	74	67	62	71	66	61	68	64	60	57
4	82	70	61	54	80	68	60	54	66	58	53	63	57	52	61	56	51	49
5	75	62	53	46	73	61	53	46	59	51	46	57	50	45	55	49	44	42
6	69	56	47	40	67	55	46	40	53	45	40	51	45	39	50	44	39	37
7	64	51	42	36	63	50	41	36	48	41	35	47	40	35	45	39	35	33
8	60	46	38	32	58	46	37	32	44	37	31	43	36	31	42	35	31	29
9	56	42	34	29	54	42	34	28	41	33	28	39	33	28	38	32	28	26
10	52	39	31	26	51	39	31	26	38	30	26	37	30	25	36	30	25	24

LAMPS (number of lamps)

Luminaire budgetary diagram



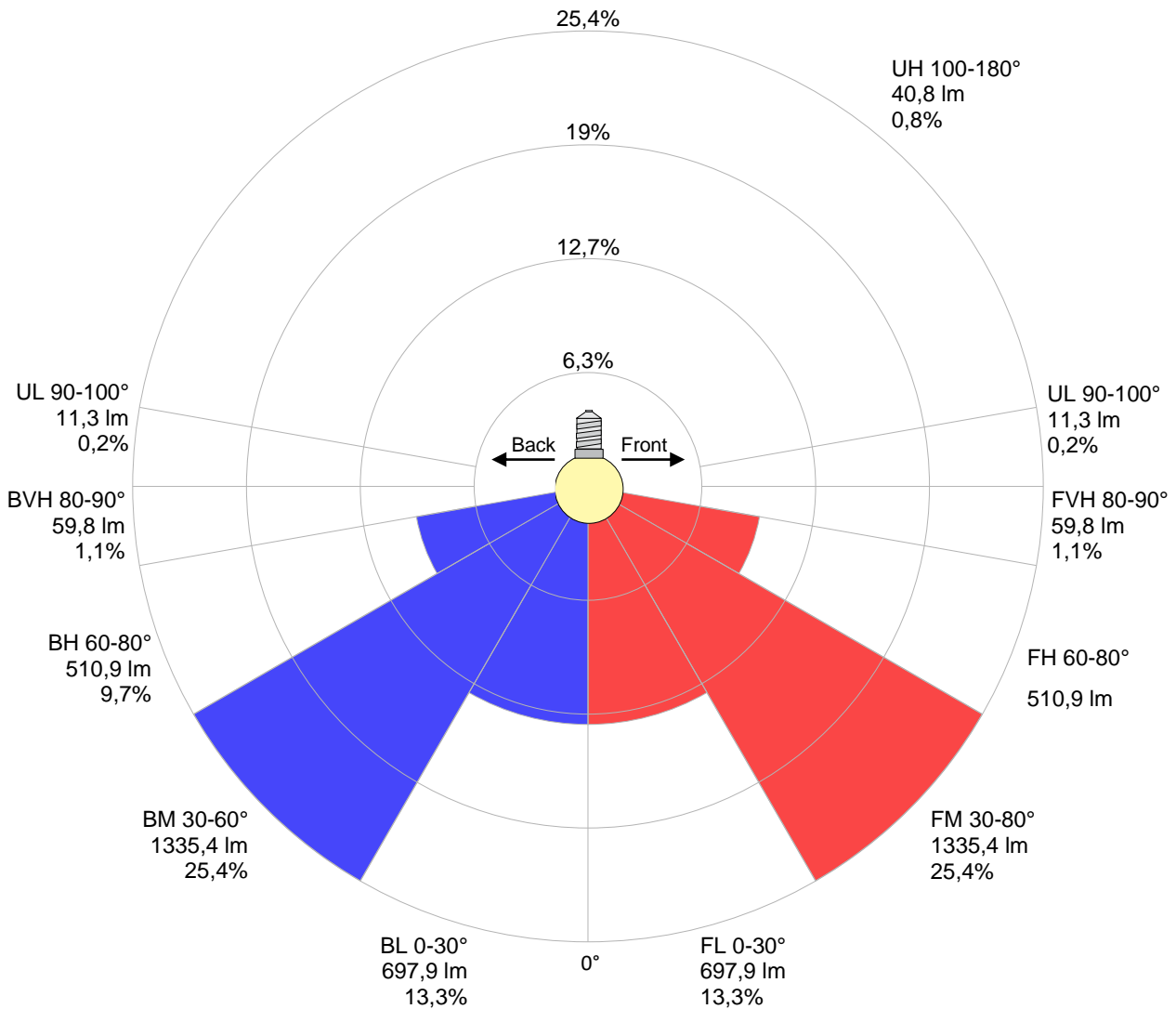
Zonal Lumen Summary

0°-10°	10°-20°	20°-30°	30°-40°	40°-50°	50°-60°	60°-70°	70°-80°	80°-90°
{LUM0-10}	487 lm	741 lm	896 lm	933 lm	844 lm	645 lm	377 lm	117 lm
90°-100°	100°-110°	110°-120°	120°-130°	130°-140°	140°-150°	150°-160°	160°-170°	170°-180°
9,54 lm	7,65 lm	7,30 lm	6,87 lm	6,09 lm	5,50 lm	4,07 lm	2,54 lm	0,855 lm

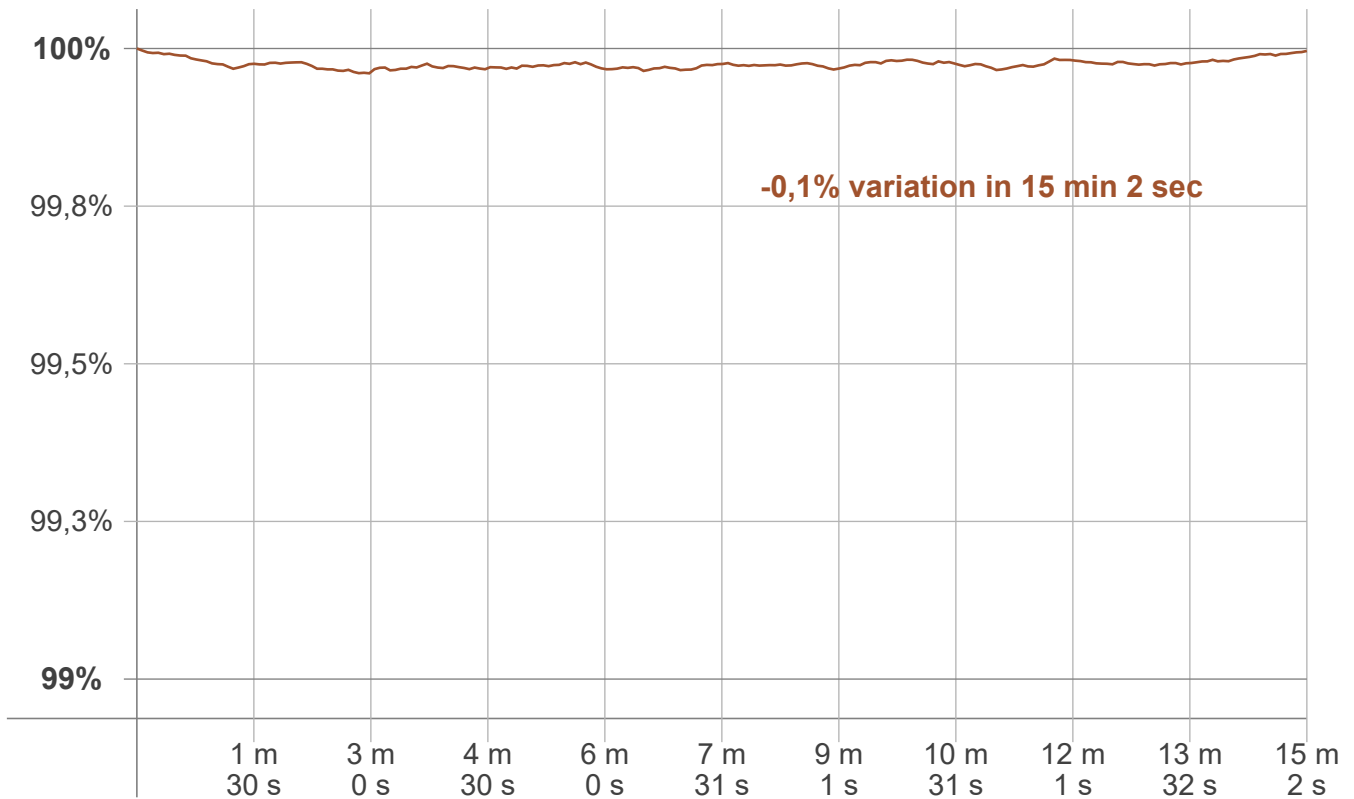
LCS table

BUG rating:	B2 U2 G1	
Forward light	Lumens	Lumens %
Low(0-30):	697,9	13,3%
Medium(30-60):	1335,4	25,4%
High(60-80):	510,9	9,7%
Very high(80-90):	59,8	1,1%
Back light		
Low(0-30):	697,9	13,3%
Medium(30-60):	1335,4	25,4%
High(60-80):	510,9	9,7%
Very high(80-90):	59,8	1,1%
Uplight		
Low(90-100):	11,3	0,2%
High(100-180):	40,8	0,8%

LCS graph



Warmup curve



Warmup result

Warmup time:	Lamp stabilized in 15 min 2 sec
Warmup variation	-0,1%

Warmup conditions

Stable period:	15 min
Stable change max:	2,0%
Minimum time:	15 min

Color temperature change

CCT start	CCT change	CCT end
4001 K	-1 K	4000 K

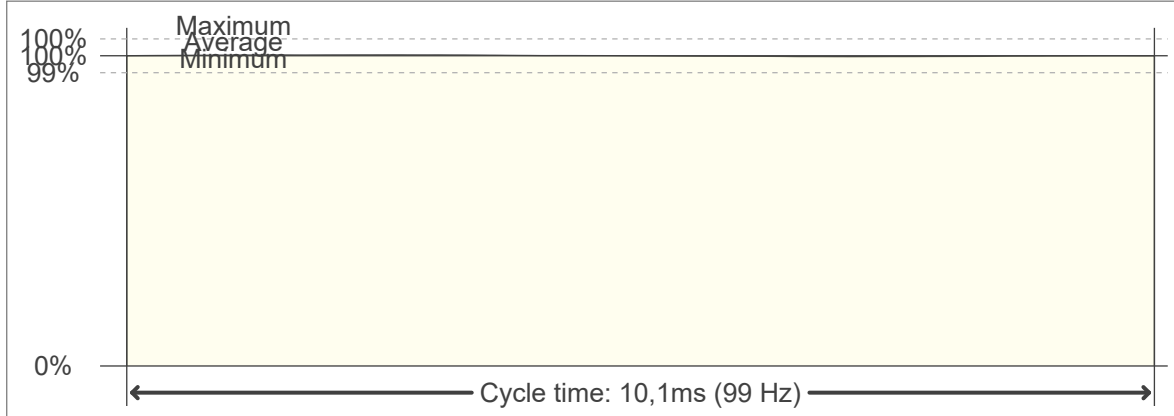
Output change

Output start	Output change	Output end
5261 lm	-1 lm	5260 lm

Flicker curve (complete sampled flicker signal)



Flicker frame (frame of one flicker period)



Flicker FFT (frequency scope of flicker curve)



Flicker results:

Flicker frequency:		99,01 Hz	
Flicker index:	0	JA8/10 40Hz	0,03 %
Flicker percentage:	0,38 %	JA8/10 90Hz	0,05 %
SVM: (Visual flicker)	0,01	JA8/10 200Hz	0,33 %
PstLM	0,02	JA8/10 400Hz	0,36 %
Mp	0,01	JA8/10 1000Hz	0,38 %

Flicker conditions:

Sample rate:	20000 samples/second
--------------	----------------------