

Light Measurement Report

Print date: 23-6-2025

Measurement date and time: 14-10-2024 16:04:20 – Measurement no. VFR-241014-1256-MS

Measurement tracking No. and Link: [VT241014-004577](#)

Operator:



Laboratory and Equipment

Laboratory Owner and Location
Goniospectrometer System and Type
Sensor Name, Calibr. Date and Serial No.
Spectrometer Manufacturer and Model

Viso Systems, Copenhagen V, Denmark
LabSpion – Type C, horizontal
LabSensor Model2 – 11-1-2024 – 3130191315
Ibsen Photonics, Denmark – Freedom VIS (Custom Viso)

Measurement Conditions

Number of C-planes and Resolution
 γ (gamma)-Resolution
Test Distance
Input Power, Power and Displ. Factors
Input RMS Voltage and Current
Frequency of Input Power
Warm-up Time and Variation

16 planes – 22,5°
5°
12,13 m
57,3 W – PF 0,98 – DPF 0,0
230 V – 0,254 A
50 Hz
n/a – n/a%

Tested Light Source

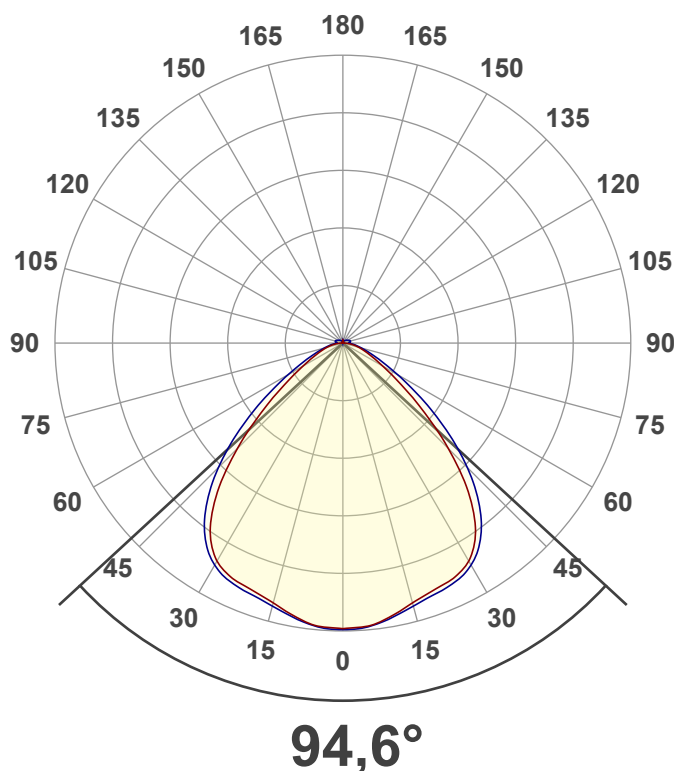
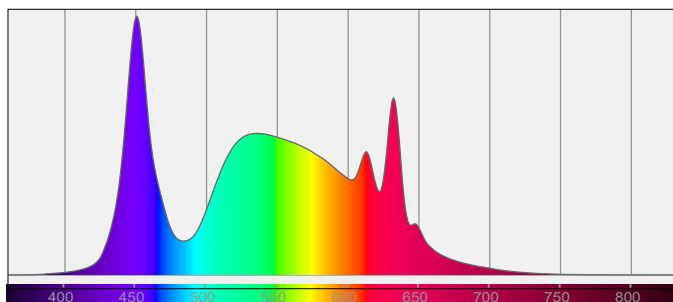
Product Name
Item No. and Manufacturer
Product Description (line 1)

274471-5700K
274471-5700K – Dutchfulfillment
RETROFIT TITAN | LED MODULE | 32W/40W/48W/56W | 90°

Main Light Measurement Results

Output – Total Lumen (Up% / Down%)
Efficiency
Peak Intensity and Beam Angle
Correlated Color Temperature, Target/Measured
Color Rendering Index
Color Rendering TM30-18
Color Shift, CIE duv and MacAdam Steps
Flicker

10320 lm – 3,35% / 96,65%
180 lm/W
4489 cd – 94,6°
CCT = 5700 K / 5613 K
CRI 82,3
 R_f 82,3 – R_g 98,9
Duv 0,0065 – SDCM 8,9
SVM n/a – PstLM n/a



Light Measurement Report

Print date: 23-6-2025

Measurement date and time: 14-10-2024 16:04:20 – Measurement no. VFR-241014-1256-MS

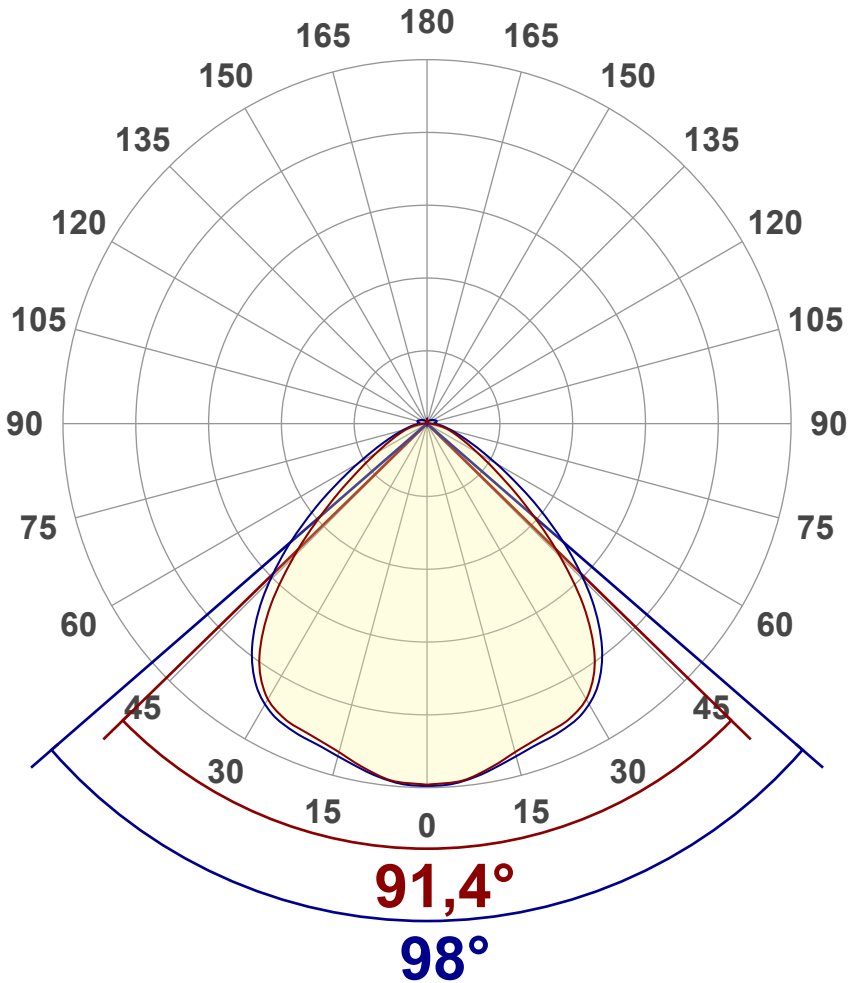
Measurement tracking No. and Link: [VT241014-004577](#)

Operator:



Luminous Intensity diagram

Unit: 0-100% of peak intensity



Main Values

Output (total Lumen)	10320 lm
Lumen Up% / Down%	3,35% / 96,65%
Peak Intensity	4489 cd
Beam Angle (50%)	94,6°
Beam Angle (90%)	98°
Beam Angle (10%)	91,4°

Cut-off Angle

Average 2,5%	188,9°
--------------	--------

Field Angle

Average 10%	137,8°
-------------	--------

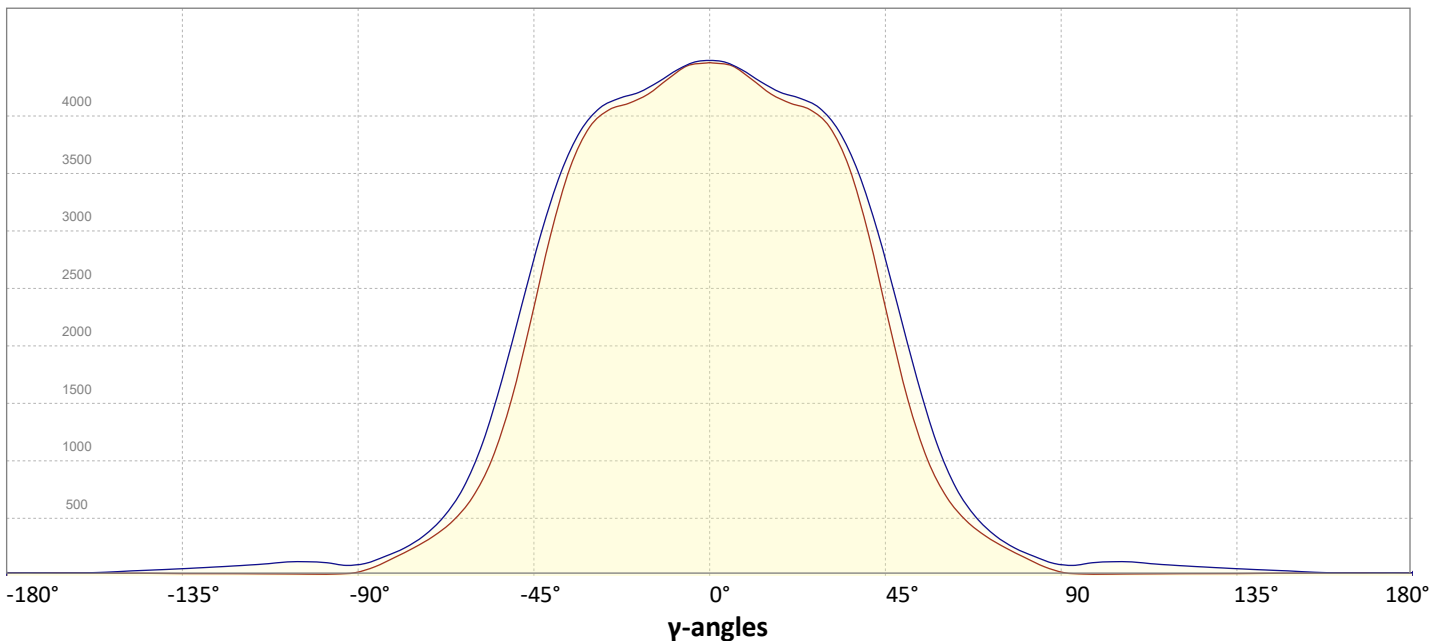
Intensity Ratio

In 120° cone	86,4%
In 90° cone	66,4%

C000-C180

C090-C270

Linear distribution diagram - Intensity (candela) vs γ -angle



Light Measurement Report

Print date: 23-6-2025

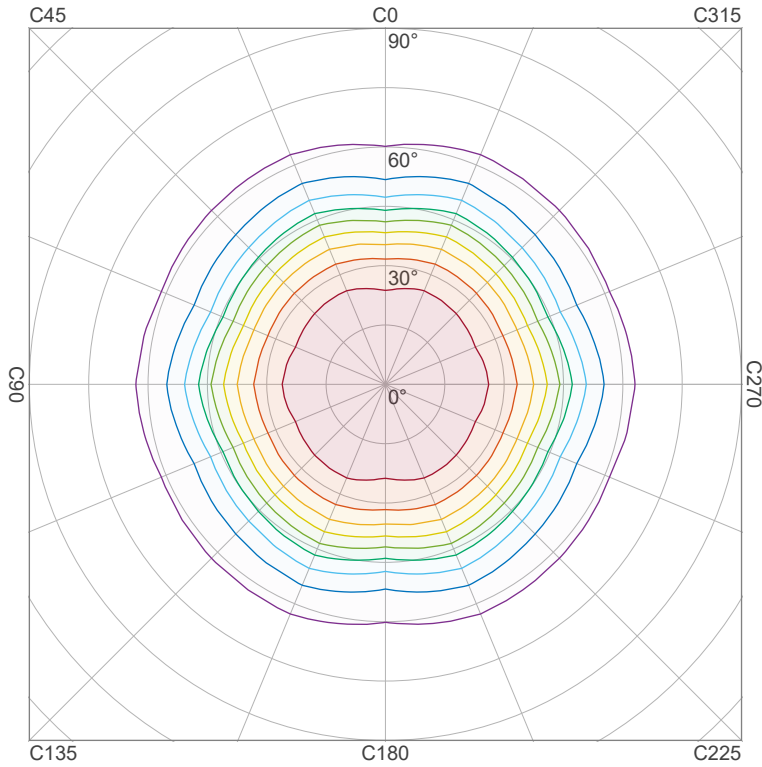
Measurement date and time: 14-10-2024 16:04:20 – Measurement no. VFR-241014-1256-MS

Measurement tracking No. and Link: [VT241014-004577](https://vt241014-004577)

Operator:



Iso-intensity Diagram (Iso-candela)

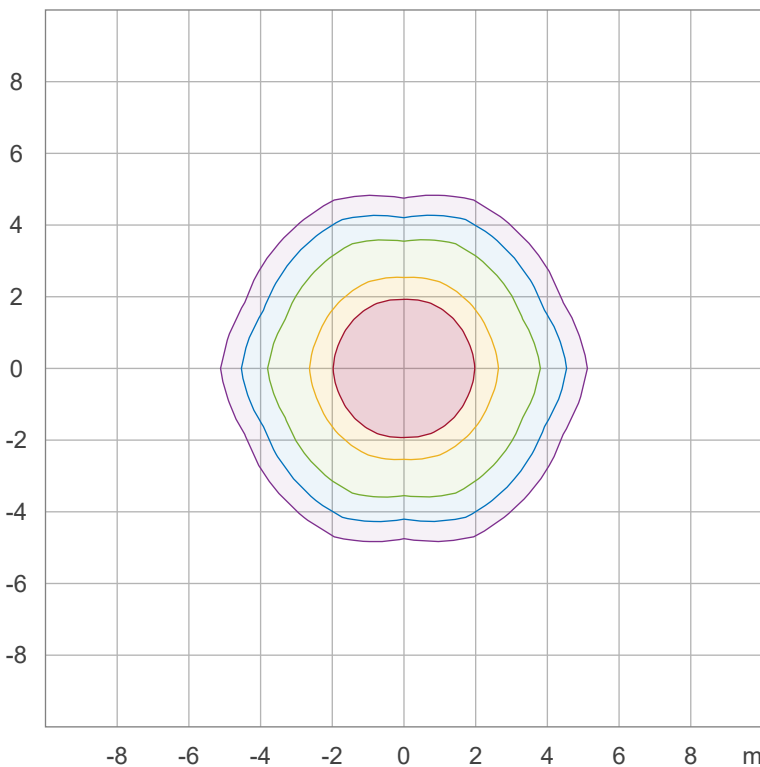


90 %	4034,1 cd
80 %	3585,9 cd
70 %	3137,6 cd
60 %	2689,4 cd
50 %	2241,2 cd
40 %	1792,9 cd
30 %	1344,7 cd
20 %	896,5 cd
10 %	448,2 cd

Peak intensity: 4482,3 cd

Number of c-planes: 16

Iso-illuminance Diagram (Iso-lux)



50,0 %	248,9 lx
30,0 %	149,3 lx
10,0 %	49,8 lx
5,0 %	24,9 lx
3,0 %	14,9 lx

Peak illuminance: 497,8 lx

Mounting height: 3,0 m

Number of c-planes: 16

Light Measurement Report

Print date: 23-6-2025

Measurement date and time: 14-10-2024 16:04:20 – Measurement no. VFR-241014-1256-MS

Measurement tracking No. and Link: [VT241014-004577](#)

Operator:

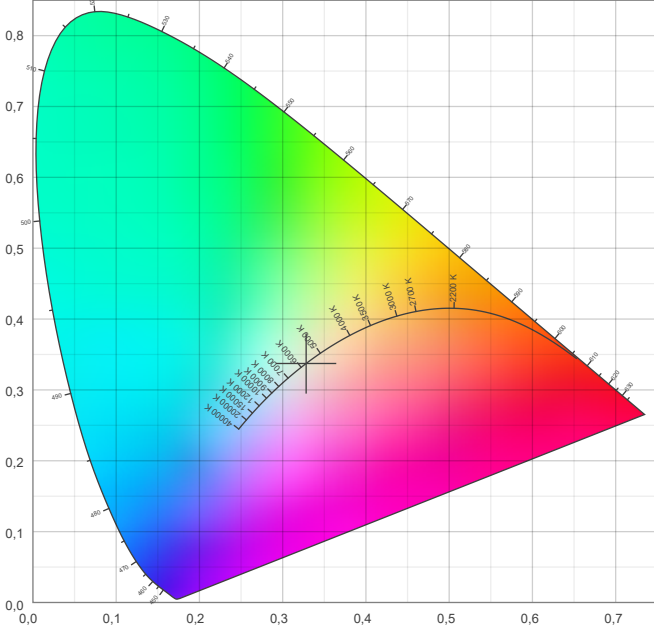


Color details

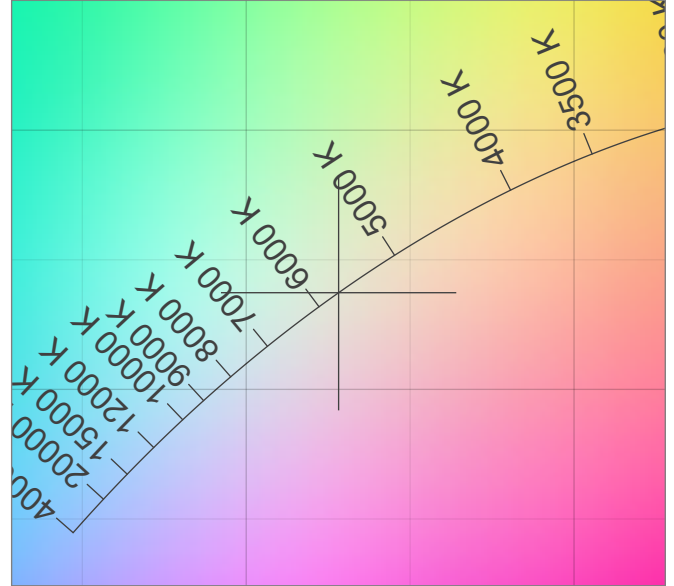
Correlated Color Temperature, Target CCT = 5700 K
 Correlated Color Temperature, Measured CCT = 5613 K
 Color Rendering Index CRI 82,3
 Color Rendering Index, R9 (red component) R9 = 38,1
 Color Rendering TM30-18 R_f 82,3 – R_g 98,9
 Color Quality Scale CQS = 82,1

MacAdam Steps SDCM = 8,9
 Color coordinates CIE 1931 (x;y) = (0,328;0,337)
 Color coordinate CIEs 1960 (u;v) = (0,205;0,317)
 Color deviation from BBL Duv = 0,0065
 Color coordinate CIEs 1976 (CIELUV) (u';v') = (0,205;0,475)

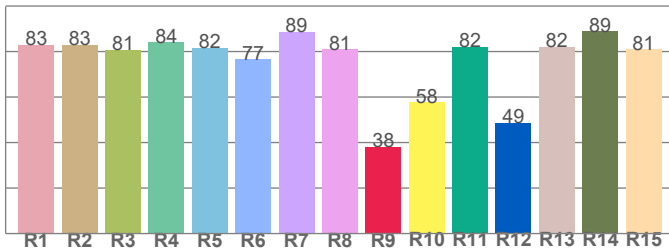
CIE 1931



CIE 1931 – zoomed on Planckian locus



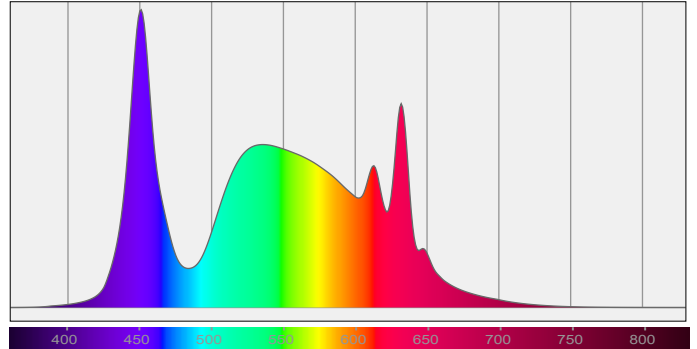
Color Rendering Index per reference color (CIE 1995)



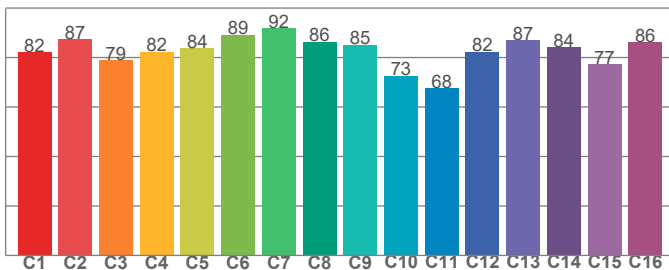
CRI R values, only R1-R8 are used to calculate final CRI value

R1	R2	R3	R4	R5	R6	R7	R8	R9	R10	R11	R12	R13	R14	R15
82,9	82,9	80,8	84,0	81,6	76,5	88,6	81,0	38,1	57,7	82,1	48,8	82,1	88,9	80,9

Spectral power distribution (SPD) / W/nm – 0-100%



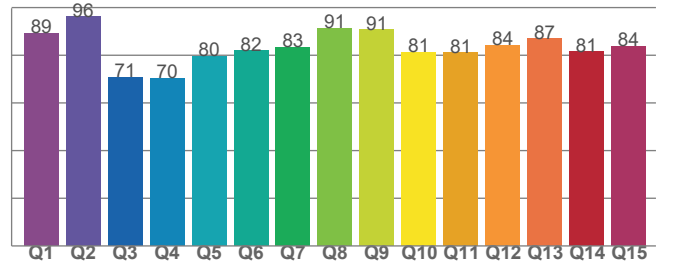
TM30-18 Rf-values per hue bin



TM30 C values, 16 binned values out of total of 99 C values

C1	C2	C3	C4	C5	C6	C7	C8	C9	C10	C11	C12	C13	C14	C15	C16
82,2	87,4	78,9	82,3	83,8	89,3	91,8	86,3	85,2	72,7	67,7	82,4	86,9	84,1	77,2	86,2

Color Quality Scale by reference color



CQS Q values

Q1	Q2	Q3	Q4	Q5	Q6	Q7	Q8	Q9	Q10	Q11	Q12	Q13	Q14	Q15
89,2	96,2	70,8	70,3	79,5	81,9	83,3	91,4	90,8	81,3	81,0	84,1	86,9	81,4	83,8

Light Measurement Report

Print date: 23-6-2025

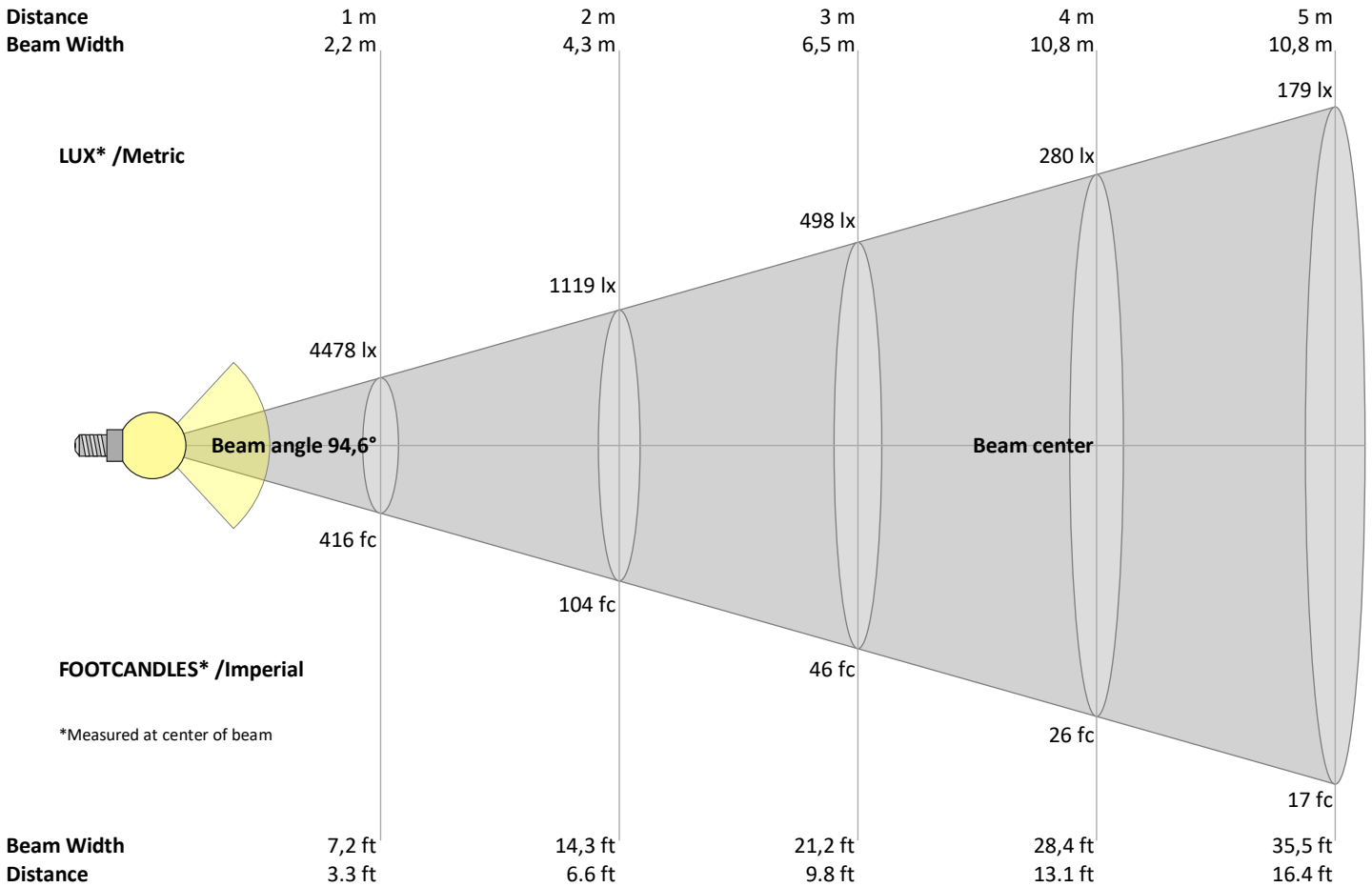
Measurement date and time: 14-10-2024 16:04:20 – Measurement no. VFR-241014-1256-MS

Measurement tracking No. and Link: [VT241014-004577](https://www.viso-systems.com/VT241014-004577)

Operator:



Beam Details



Beam intensities from 1 – 20 m

1	2	3	4	5	6	7	8	9	10	11	12	13	14	15	16	17	18	19	20	m
3,3	6,6	9,8	13,1	16,4	19,7	23	26,2	29,5	32,8	36,1	39,4	42,7	45,9	49,2	52,5	55,8	59,1	62,3	65,6	ft
4478	1119	498	280	179	124	91	70	55	45	37	31	26	23	20	17	15	14	12	11	lux
416	104	46,2	26	16,6	11,6	8,5	6,5	5,1	4,2	3,4	2,9	2,5	2,1	1,8	1,6	1,4	1,3	1,2	1	fc

Intensities in 0° c-plane

0°	5°	10°	15°	20°	25°	30°	35°	40°	45°	50°	55°	60°	65°	70°	75°	80°	85°	90°	95°	γ
4478	4440	4337	4209	4122	4062	3925	3601	3048	2335	1634	1089	730	507	363	258	170	90	34	16	cd
100%	99%	97%	94%	92%	91%	88%	80%	68%	52%	36%	24%	16%	11%	8%	6%	4%	2%	1%	0%	of 0°val

Intensities in 90° c-plane

0°	5°	10°	15°	20°	25°	30°	35°	40°	45°	50°	55°	60°	65°	70°	75°	80°	85°	90°	95°	γ
4478	4448	4364	4262	4186	4122	3993	3730	3307	2745	2111	1501	1007	668	451	309	214	145	101	99	cd
100%	99%	97%	95%	93%	92%	89%	83%	74%	61%	47%	34%	22%	15%	10%	7%	5%	3%	2%	2%	of 0°val

Intensities in 180° c-plane

0°	5°	10°	15°	20°	25°	30°	35°	40°	45°	50°	55°	60°	65°	70°	75°	80°	85°	90°	95°	γ
4478	4440	4337	4209	4122	4062	3925	3601	3048	2335	1634	1089	730	507	363	258	170	90	34	16	cd
100%	99%	97%	94%	92%	91%	88%	80%	68%	52%	36%	24%	16%	11%	8%	6%	4%	2%	1%	0%	of 0°val

Intensities in 270° c-plane

0°	5°	10°	15°	20°	25°	30°	35°	40°	45°	50°	55°	60°	65°	70°	75°	80°	85°	90°	95°	γ
4478	4448	4364	4262	4186	4122	3993	3730	3307	2745	2111	1501	1007	668	451	309	214	145	101	99	cd
100%	99%	97%	95%	93%	92%	89%	83%	74%	61%	47%	34%	22%	15%	10%	7%	5%	3%	2%	2%	of 0°val

Light Measurement Report

Print date: 23-6-2025

Measurement date and time: 14-10-2024 16:04:20 – Measurement no. VFR-241014-1256-MS

Measurement tracking No. and Link: [VT241014-004577](#)

Operator:



Light Planning – UGR table

Uncorrected, comprehensive UGR table according to 117-1995

Reflectances		70	70	50	50	30	70	70	50	50	30
	ρ Ceiling	70	70	50	50	30	70	70	50	50	30
	ρ Walls	50	30	50	30	30	50	30	50	30	30
	ρ Floor	20	20	20	20	20	20	20	20	20	20
Room size		Viewed Crosswise					Viewed Endwise				
H = mounting height above eye level		(Viewing direction orthogonal to lamp length axis)					(Viewing direction parallel to lamp length axis)				
X	Y										
2H	2H	22,8	23,8	23,0	24,1	24,4	23,0	24,1	23,3	24,4	24,7
	3H	23,0	24,1	23,5	24,4	24,7	23,5	24,5	23,9	24,8	25,1
	4H	23,2	24,2	23,6	24,5	24,8	23,7	24,7	24,2	25,1	25,4
	6H	23,4	24,2	23,7	24,6	25,0	24,0	24,9	24,4	25,3	25,7
	8H	23,4	24,2	23,8	24,6	25,1	24,2	25,0	24,5	25,4	25,8
	12H	23,4	24,2	23,8	24,6	25,1	24,3	25,1	24,7	25,5	26,0
4H	2H	22,9	23,9	23,3	24,2	24,5	23,1	24,1	23,5	24,4	24,7
	3H	23,5	24,3	23,9	24,7	25,2	23,8	24,7	24,2	25,0	25,5
	4H	23,6	24,4	24,1	24,9	25,4	24,1	24,9	24,6	25,3	25,9
	6H	23,8	24,6	24,4	25,0	25,4	24,5	25,2	25,0	25,6	26,0
	8H	23,9	24,5	24,4	25,0	25,4	24,7	25,3	25,2	25,8	26,2
	12H	23,9	24,5	24,4	24,9	25,5	24,9	25,4	25,4	25,9	26,4
8H	4H	23,7	24,4	24,3	24,8	25,2	24,2	24,8	24,7	25,3	25,7
	6H	24,0	24,5	24,6	25,1	25,6	24,7	25,2	25,2	25,7	26,3
	8H	24,2	24,6	24,8	25,2	25,9	25,0	25,4	25,6	26,0	26,7
	12H	24,3	24,6	24,9	25,2	25,8	25,3	25,7	25,9	26,2	26,9
12H	4H	23,7	24,3	24,2	24,7	25,3	24,1	24,7	24,7	25,2	25,7
	6H	24,1	24,5	24,7	25,1	25,8	24,7	25,1	25,3	25,7	26,4
	8H	24,3	24,6	24,9	25,2	25,8	25,0	25,4	25,7	26,0	26,6

Variations with the observer position for the luminaire spacings, S:

S = 1.0H	0,5 / -0,7	0,3 / -0,5
S = 1.5H	1,1 / -1,6	1,1 / -1,1
S = 2.0H	2,2 / -2,3	2,0 / -1,6

Coefficients of Utilization

Ceiling reflectance	80			70			50			30			10			0		
Wall reflectance	70	50	30	10	70	50	30	10	50	30	10	50	30	10	50	30	10	0
Floor reflectance	20	20	20	20	20	20	20	20	20	20	20	20	20	20	20	20	20	0
RCR	(RCR: Room Cavity Ratio)																	
	Room Values are expressed as percentage of Lumen delivered to the task surface																	
0	118	118	118	118	115	115	115	115	109	109	109	104	104	104	99	99	99	97
1	110	106	102	99	107	103	100	97	98	95	93	94	92	90	90	88	86	84
2	101	94	88	83	98	92	87	82	88	83	80	84	81	77	81	78	75	73
3	93	84	77	71	91	82	76	70	79	73	69	76	71	67	73	69	66	64
4	86	76	68	62	84	74	67	61	71	65	60	69	63	59	66	62	58	56
5	80	68	60	54	78	67	60	54	65	58	53	62	57	52	60	55	51	49
6	74	62	54	48	72	61	53	48	59	52	47	57	51	47	55	50	46	44
7	69	57	49	43	67	56	48	43	54	47	42	52	46	42	51	45	41	39
8	64	52	44	39	63	51	44	38	50	43	38	48	42	38	47	41	37	35
9	60	48	40	35	59	47	40	35	46	39	35	45	39	34	43	38	34	32
10	57	44	37	32	55	44	37	32	42	36	31	41	35	31	40	35	31	29

Light Measurement Report

Print date: 23-6-2025

Measurement date and time: 14-10-2024 16:04:20 – Measurement no. VFR-241014-1256-MS

Measurement tracking No. and Link: [VT241014-004577](#)

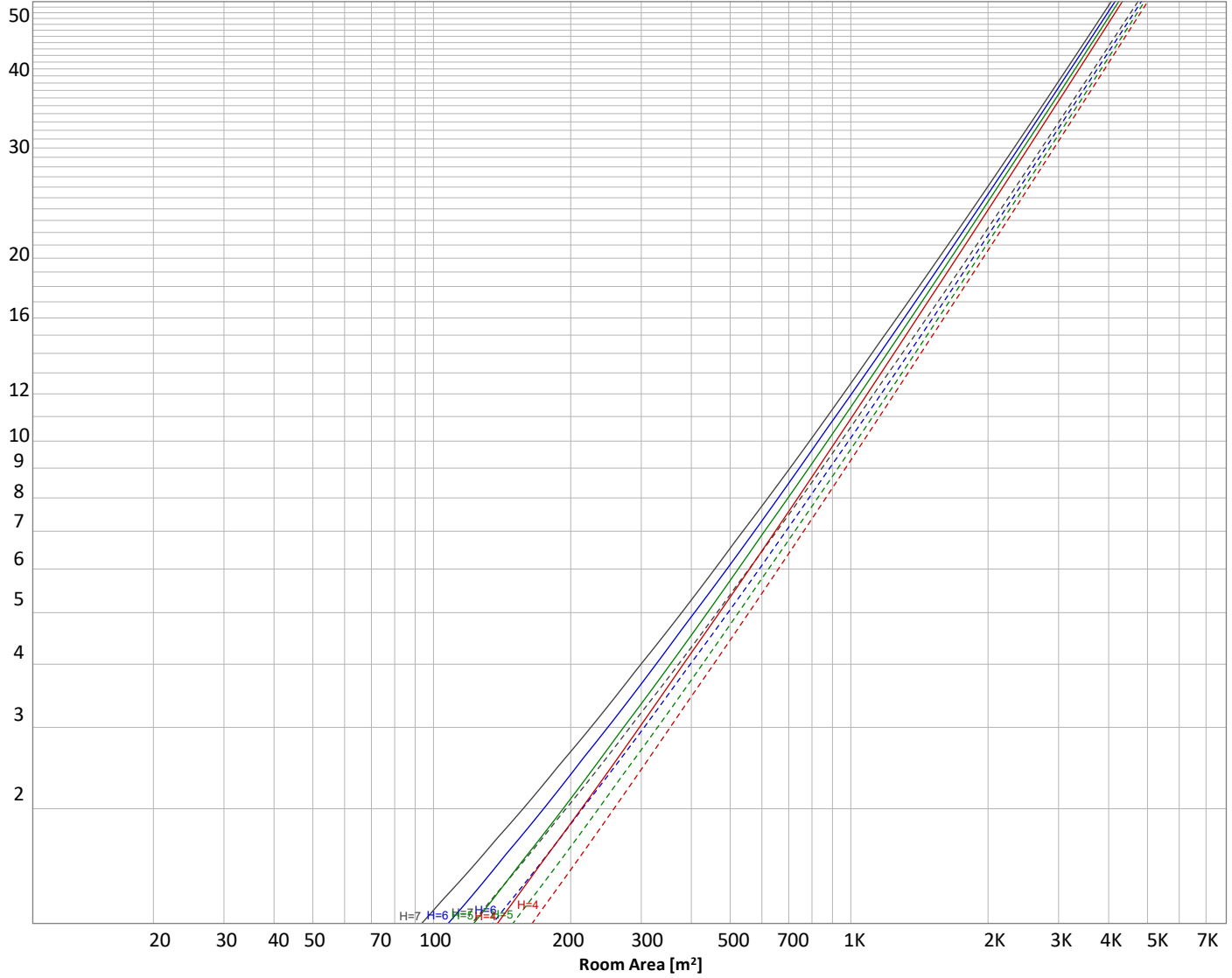
Operator:



Luminaire budgetary diagram

Uncorrected, comprehensive UGR table according to 117-1995

LAMPS (number of lamps)



Conditions

H = Room height	Flux = 10320 lm				
H _{down} = Lamp distance from ceiling =	0.00 m	Line type	Ceiling reflectance	ρ(%) Wall reflectance	Floor reflectance
H _{work} = Work area height from floor =	0.00 m	-----	70	50	30
E _{work} = Average lux on work area =	100 lx	—————	50	30	20

Zonal Lumen Summary

0°-10°	10°-20°	20°-30°	30°-40°	40°-50°	50°-60°	60°-70°	70°-80°	80°-90°
422 lm	1199 lm	1890 lm	2282 lm	1952 lm	1168 lm	597 lm	316 lm	148 lm
90°-100°	100°-110°	110°-120°	120°-130°	130°-140°	140°-150°	150°-160°	160°-170°	170°-180°
77,1 lm	82,8 lm	65,3 lm	47,1 lm	31,8 lm	20,1 lm	12,0 lm	7,12 lm	2,48 lm

Light Measurement Report

Print date: 23-6-2025

Measurement date and time: 14-10-2024 16:04:20 – Measurement no. VFR-241014-1256-MS

Measurement tracking No. and Link: [VT241014-004577](#)

Operator:



Outdoor Light Planning

Lumen per Zone

Zone (γ)	Lumen	% Total
0-10°	422 lm	4,1%
10-20°	1199 lm	11,6%
20-30°	1890 lm	18,3%
30-40°	2282 lm	22,1%
40-50°	1952 lm	18,9%
50-60°	1168 lm	11,3%
60-70°	597 lm	5,8%
70-80°	316 lm	3,1%
80-90°	148 lm	1,4%
90-100°	77 lm	0,7%
100-110°	83 lm	0,8%
110-120°	65 lm	0,6%
120-130°	47 lm	0,5%
130-140°	32 lm	0,3%
140-150°	20 lm	0,2%
150-160°	12 lm	0,1%
160-170°	7 lm	0,1%
170-180°	2 lm	0,0%
Total	10320 lm	100,0%

Intensity peaks

Max intensity	4489 cd
Intensity, 90°	34 cd
Intensity, 0°	4478 cd

Zonal Lumen summary

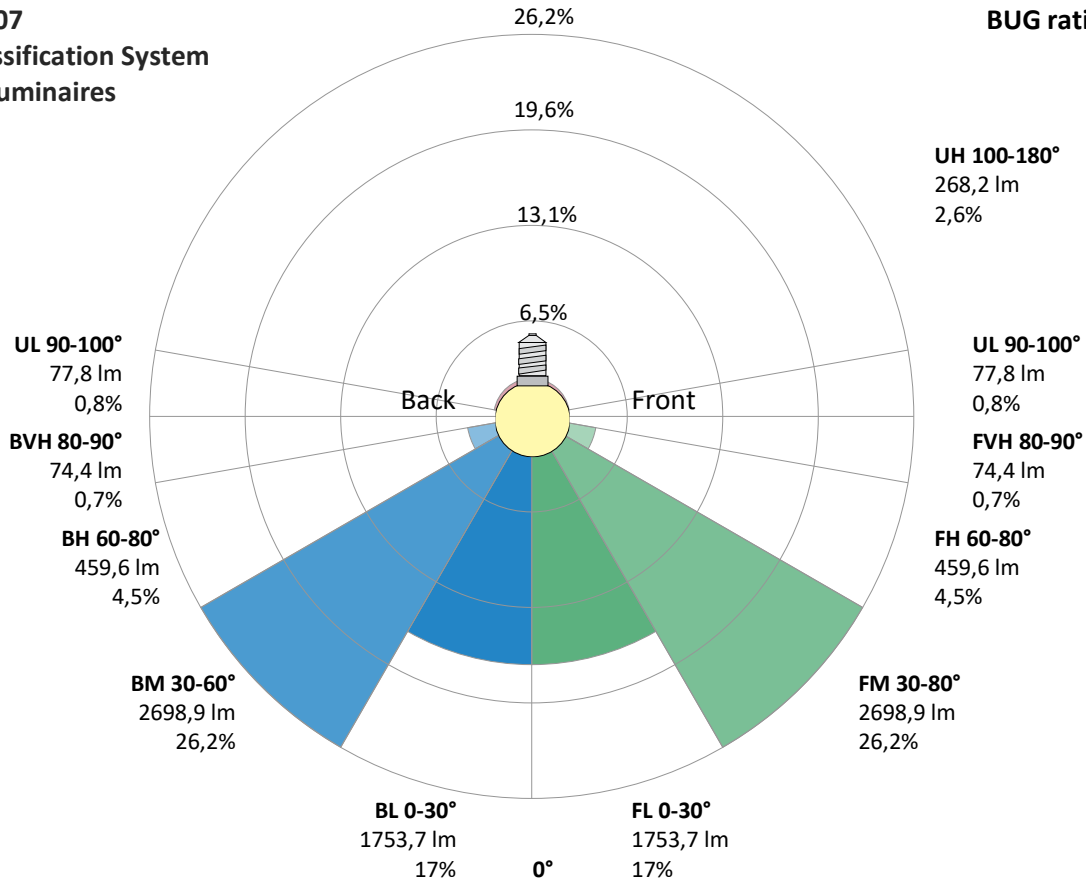
Zone (γ)	Lumen	% Total
0-30°	3511 lm	34,0%
0-40°	5792 lm	56,1%
0-60°	8913 lm	86,4%
60-90°	1061 lm	10,3%
70-100°	541 lm	5,2%
90-120°	225 lm	2,2%
0-90°	9974 lm	96,6%
90-180°	346 lm	3,4%
0-180°	10320 lm	100,0%

BUG rating

	Lumen	% Total
Forward light		
Low(0-30°)	1754 lm	17,0%
Medium(30-60°)	2699 lm	26,2%
High(60-80°)	460 lm	4,5%
Very high(80-90°)	74 lm	0,7%
Back light		
Low(0-30°)	1754 lm	17,0%
Medium(30-60°)	2699 lm	26,2%
High(60-80°)	460 lm	4,5%
Very high(80-90°)	74 lm	0,7%
Uplight		
Low(90-100°)	78 lm	0,8%
High(100-180°)	268 lm	2,6%

IESNA TM-15-07 Luminaire Classification System For Outdoor Luminaires

BUG rating B3 U3 G1



Light Measurement Report

Print date: 23-6-2025

Measurement date and time: 14-10-2024 16:04:20 – Measurement no. VFR-241014-1256-MS

Measurement tracking No. and Link: [VT241014-004577](#)

Operator:

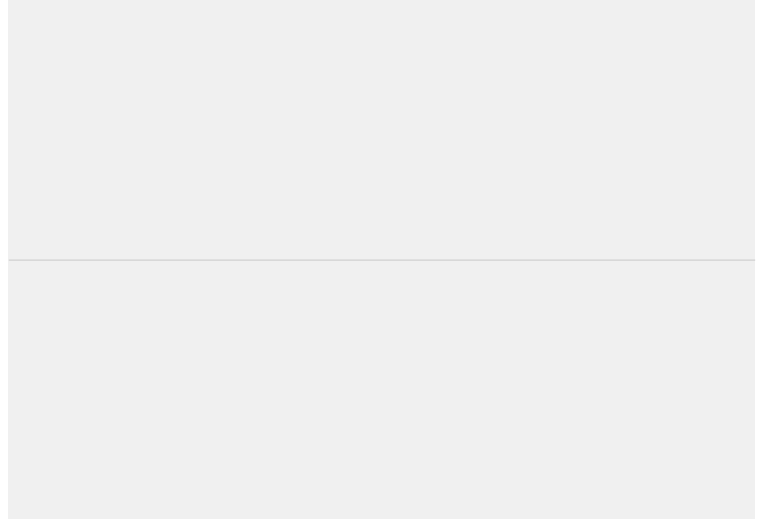


Power Details

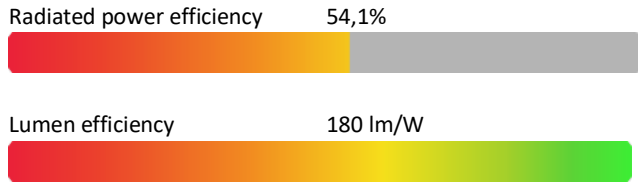
Input Power

Power feed to light source	57,3 W
Frequency of input power	50 Hz
RMS Input voltage feed, V_{RMS}	230 V
RMS Input current feed, I_{RMS}	0,254 A
Volt-Ampere or apparent power = $V_{RMS} * I_{RMS}$	58,37 VA
Displacement factor of AC power feed	0,0
Power factor of AC current feed	0,98
Total harmonic distortion of the current	0%
Total harmonic distortion of the voltage	0%

Input Power Curve



Efficiency



Stabilization Details

Warmup Conditions

Stable period	n/a
Stable change max	n/a%
Minimum time	n/a

Color Temperature Change

CCT start	n/a K
CCT shift	n/a K
CCT end	5700 K

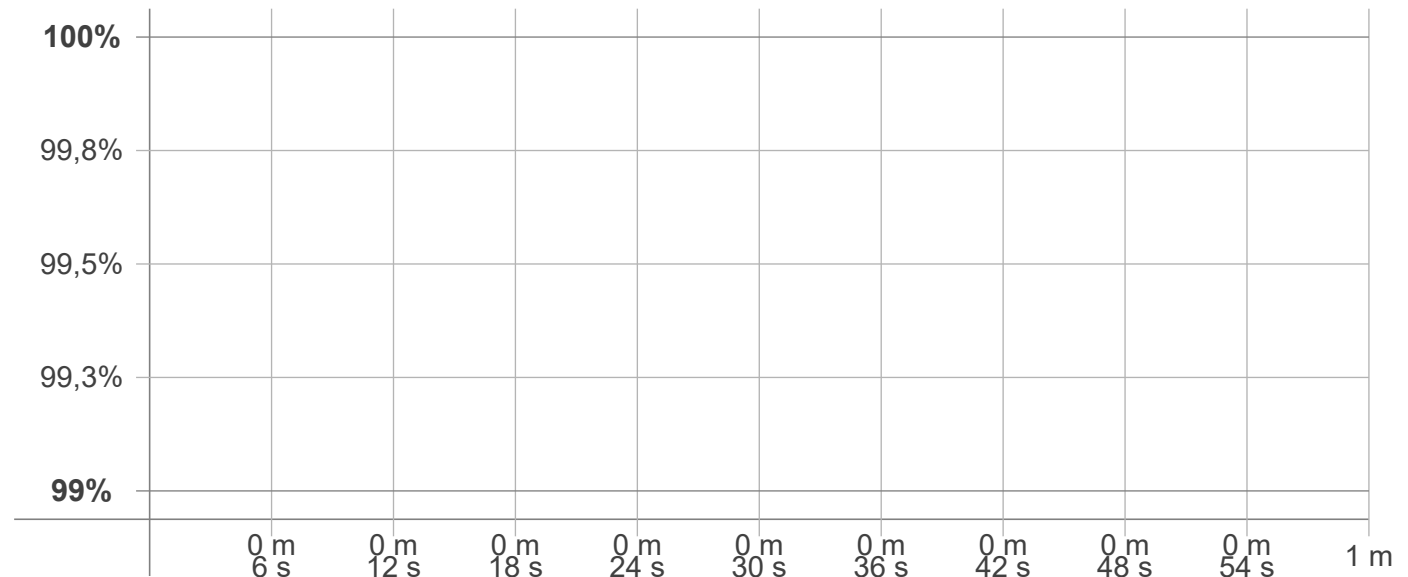
Warmup Result

Total warmup time	n/a
Warmup variation	n/a%

Output Change

Output start	n/a lm
Output change	n/a lm
Output end	10320 lm

Stabilization Curve



Light Measurement Report

Print date: 23-6-2025

Measurement date and time: 14-10-2024 16:04:20 – Measurement no. VFR-241014-1256-MS

Measurement tracking No. and Link: [VT241014-004577](https://www.viso-systems.com/VT241014-004577)

Operator:



Flicker /TLA details

Flicker Meter Type: Viso Systems LabFlicker
 Frequency of input power: 50 Hz
 Flicker/TLA sample rate: n/a samples/s

Measurement time
 PstLM: 180 sec
 All other indices: 1,2 sec

Flicker indices according to Illuminating Engineering Society (IES)

Flicker frequency: n/a Hz
 Percent Flicker: n/a %
 Flicker index: n/a

Flicker indices according to California Energy Commission (CEC) 2016b

JA8/10 40 Hz: n/a %
 JA8/10 90 Hz: n/a %
 JA8/10 200 Hz: n/a %
 JA8/10 400 Hz: n/a %
 JA8/10 1000 Hz: n/a %

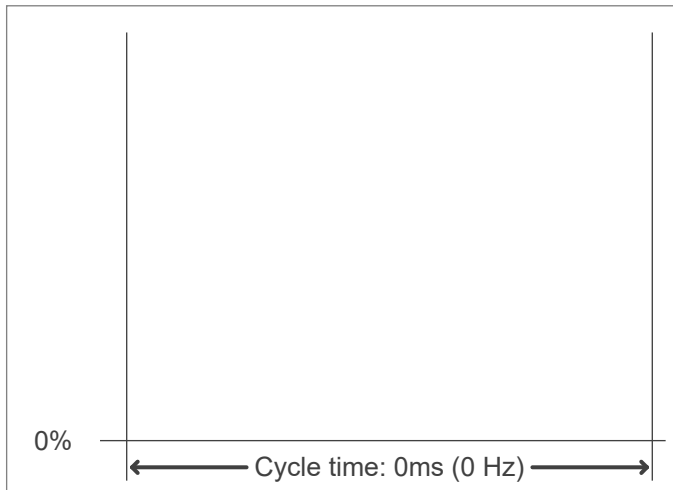
TLA indices (re IEC TR 61547-1, IEC 61000-3-3 and IEC 61000-4-15)

PstLM value (F < 80 Hz): n/a
 SVM value (80 < F < 2000 Hz): n/a

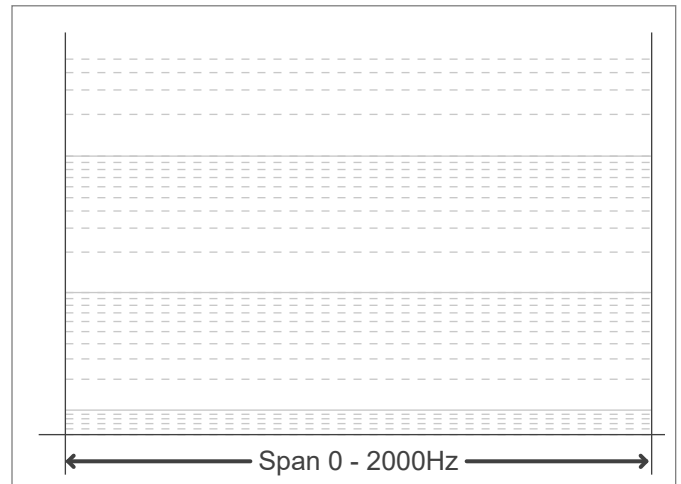
Flicker indices according to Lighting Research Center (2015)

Perception metric, Assist Mp: n/a

Flicker frame (frame of one flicker period in time domain)



Flicker FFT (flicker curve in frequency domain)



IEEE 1789 Frequency/modulation plot

