

Light efficiency:



Light quality:



Color temperature:

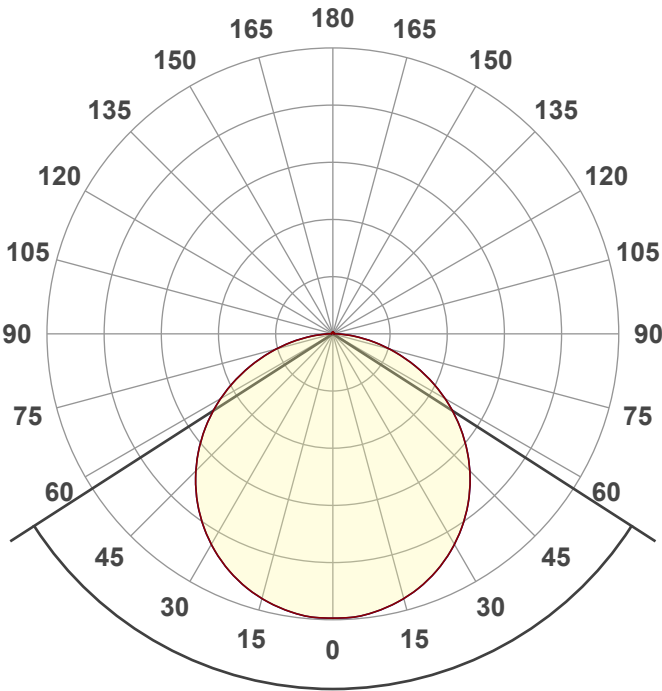


Output: 4150 lm

Peak: 1396 cd

Power: 35,4 W

PF: 0,96



Tracking number: [VT241004-006748](#)

Product name:
272903-4000K

Item number:
272903-4000K

Date and time:
4-10-2024 11:06:10

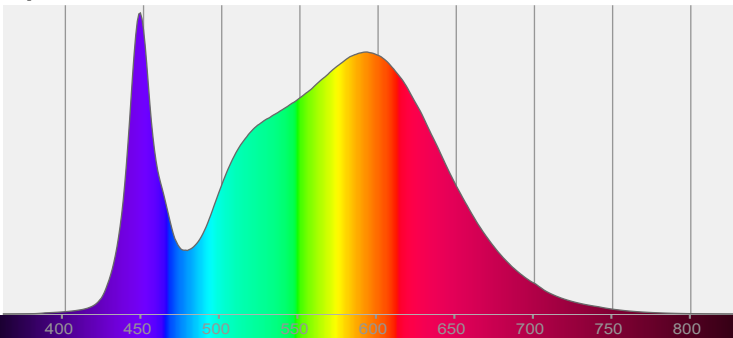
Description:
BACK-LIT LED PANEEL | ARIEL | 120X30CM | 36W

Beam angle **114,5°**

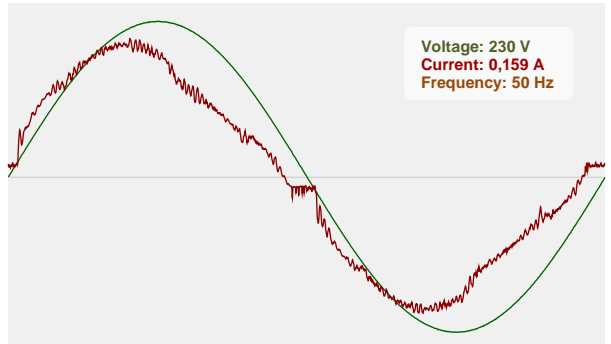


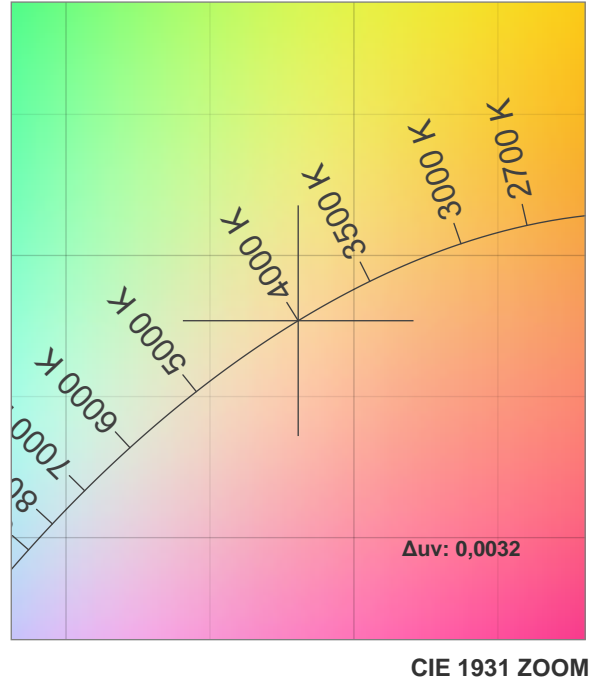
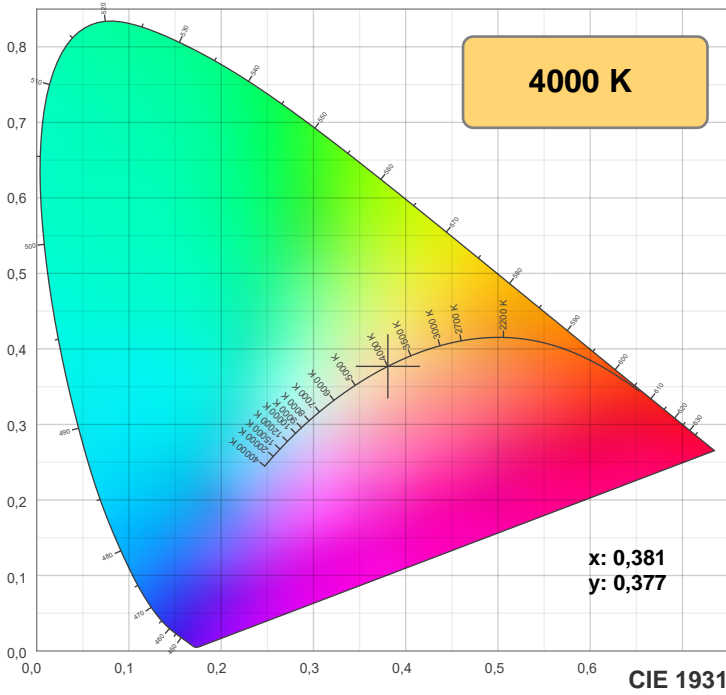
CIE 1931
x: 0,381
y: 0,377

Spectra



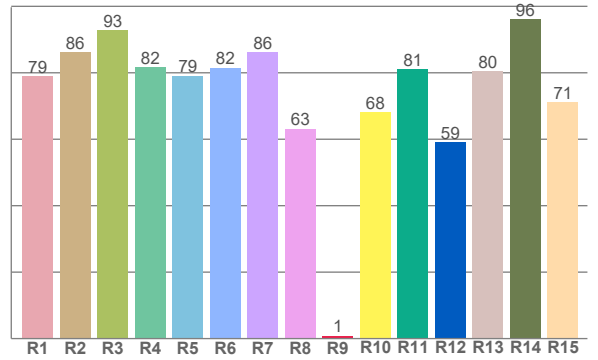
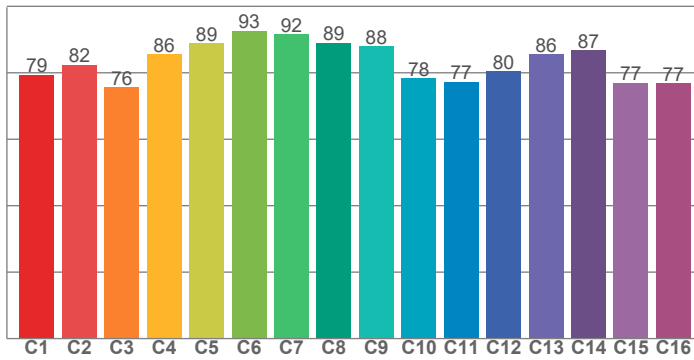
Power





TM-30: 83,3

CRI: 81,2 (R1-R8)



CRI R values, only R1-R8 are used to calculate final CRI value

R1	R2	R3	R4	R5	R6	R7	R8	R9	R10	R11	R12	R13	R14	R15
78,9	86,2	92,8	81,7	79,1	81,6	86,1	63,2	0,8	68,1	81,0	59,1	80,4	96,1	71,1

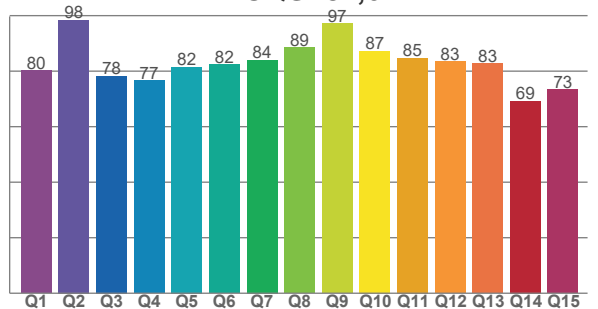
TM30 C values, 16 binned values out of total of 99 C values

C1	C2	C3	C4	C5	C6	C7	C8	C9	C10	C11	C12	C13	C14	C15	C16
79,4	82,4	75,7	85,6	88,9	92,6	91,7	89,1	87,9	78,3	77,3	80,5	85,5	86,7	77,0	76,8

CQS Q values

Q1	Q2	Q3	Q4	Q5	Q6	Q7	Q8	Q9	Q10	Q11	Q12	Q13	Q14	Q15
80,3	98,4	78,2	76,6	81,5	82,4	84,0	88,6	97,2	87,3	84,7	83,4	82,8	69,3	73,3

CQS: 81,6



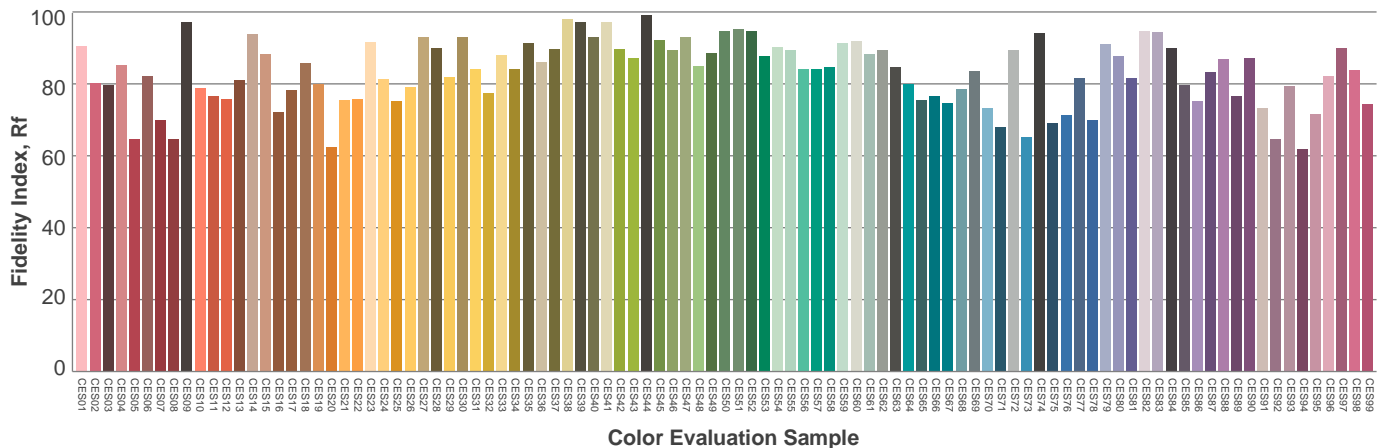
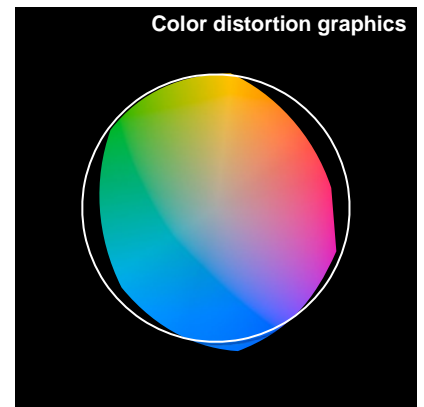
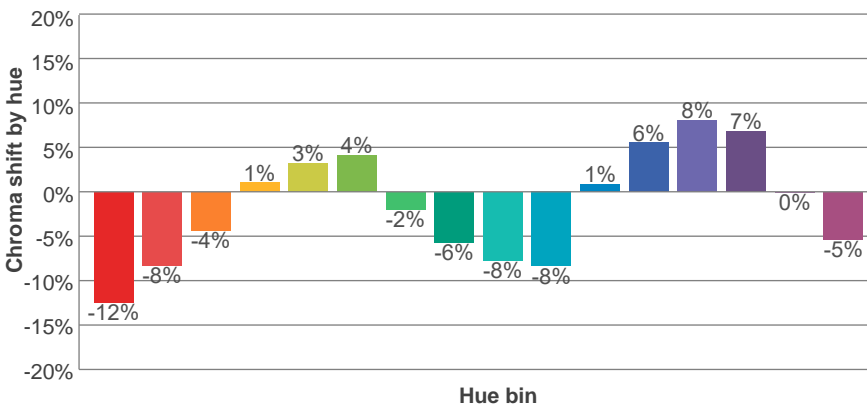
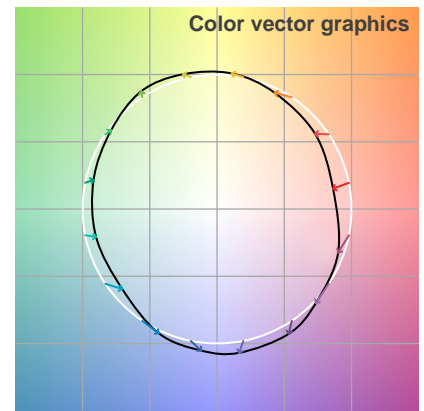
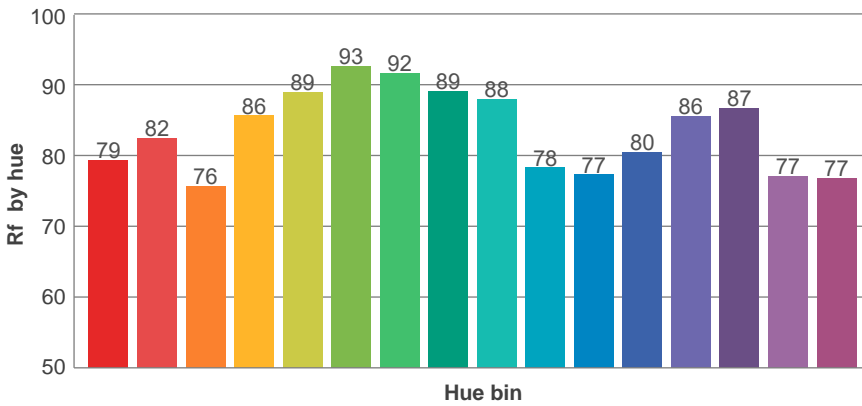
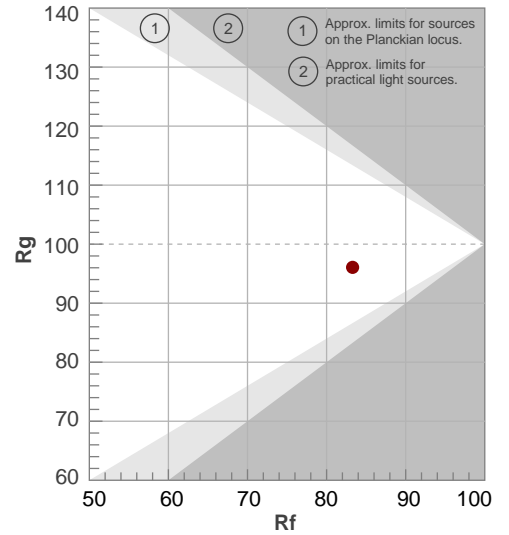
Color parameters

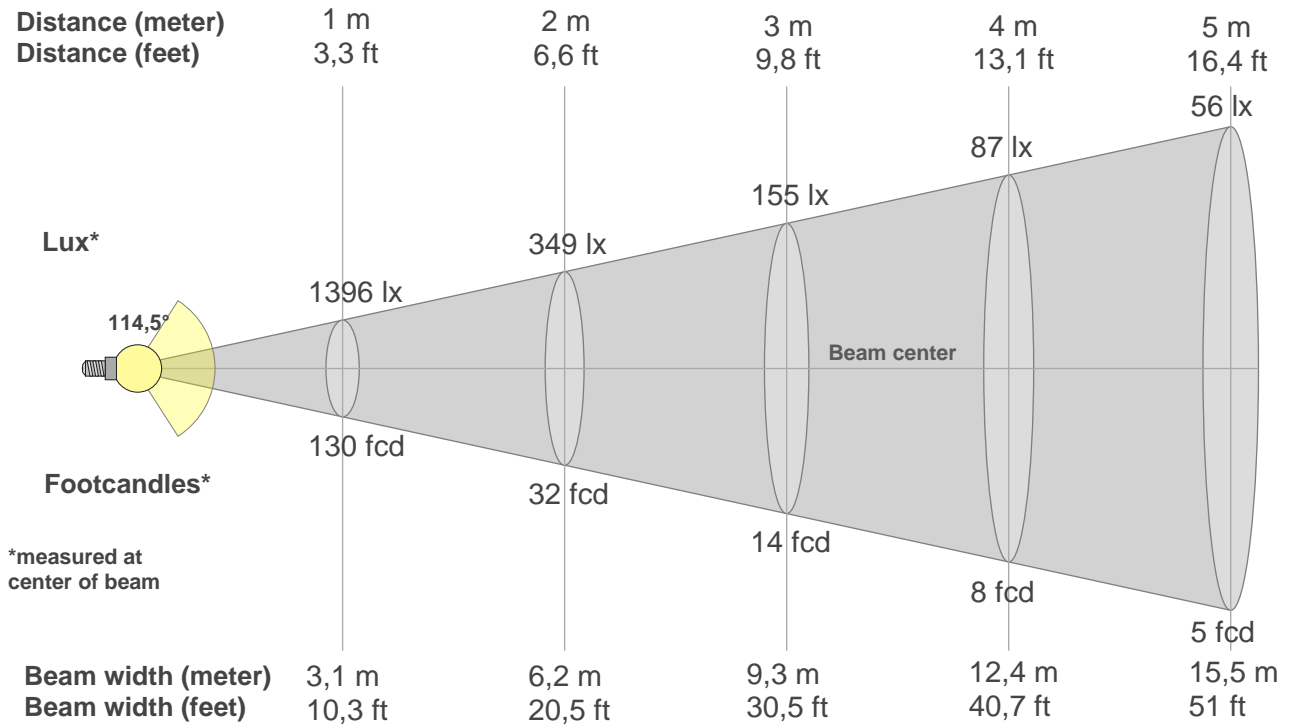
Color temperature	Color rendering index	Red component	Color fidelity	Color gamut	Color quality scale	Color coordinate cie 1931	Color coordinate cie 1931	Color coordinate	Color coordinate	Color divition from black body
CCT	CRI	CRI R9	TM30 Rf	TM30 Rg	CQS	x	y	u	v	Δuv
4000 K	81,2	0,8	83,3	96,1	81,6	0,381	0,377	0,225	0,334	0,0032

Rf 83,3
Fidelity index Rf

Rg 96,1
Gamut index Rg

Hue Bin	R _f	Shifts (%)	
		Chroma	Hue
1	79	-12%	-2%
2	82	-8%	6%
3	76	-4%	12%
4	86	1%	9%
5	89	3%	5%
6	93	4%	-2%
7	92	-2%	-5%
8	89	-6%	-3%
9	88	-8%	3%
10	78	-8%	10%
11	77	1%	15%
12	80	6%	9%
13	86	8%	-5%
14	87	7%	-7%
15	77	0%	-17%
16	77	-5%	-14%





Beam intensities from 1-20m

1m	2m	3m	4m	5m	6m	7m	8m	9m	10m	11m	12m	13m	14m	15m	16m	17m	18m	19m	20m
3,3ft	6,6ft	9,8ft	13,1ft	16,4ft	19,7ft	23ft	26,2ft	29,5ft	32,8ft	36,1ft	39,4ft	42,7ft	45,9ft	49,2ft	52,5ft	55,8ft	59,1ft	62,3ft	65,6ft
1396lx	349lx	155lx	87lx	56lx	39lx	28lx	22lx	17lx	14lx	12lx	10lx	8lx	7lx	6lx	5lx	5lx	4lx	4lx	3lx
129,7fc	32,4fcd	14,4fcd	8,1fcd	5,2fcd	3,6fcd	2,6fcd	2fcd	1,6fcd	1,3fcd	1,1fcd	0,9fcd	0,8fcd	0,7fcd	0,6fcd	0,5fcd	0,4fcd	0,4fcd	0,4fcd	0,3fcd

Intensities in 0° c-plane

0°	5°	10°	15°	20°	25°	30°	35°	40°	45°	50°	55°	60°	65°	70°	75°	80°	85°	90°	95°
1396	1392	1374	1345	1305	1254	1193	1122	1041	951	852	747	636	520	403	288	180	86	24	5
100%	100%	98%	96%	94%	90%	85%	80%	75%	68%	61%	54%	46%	37%	29%	21%	13%	6%	2%	0%

Intensities in 90° c-plane

0°	5°	10°	15°	20°	25°	30°	35°	40°	45°	50°	55°	60°	65°	70°	75°	80°	85°	90°	95°
1396	1392	1374	1345	1305	1254	1193	1122	1041	951	852	747	636	520	403	288	180	86	24	5
100%	100%	98%	96%	94%	90%	85%	80%	75%	68%	61%	54%	46%	37%	29%	21%	13%	6%	2%	0%

Intensities in 180° c-plane

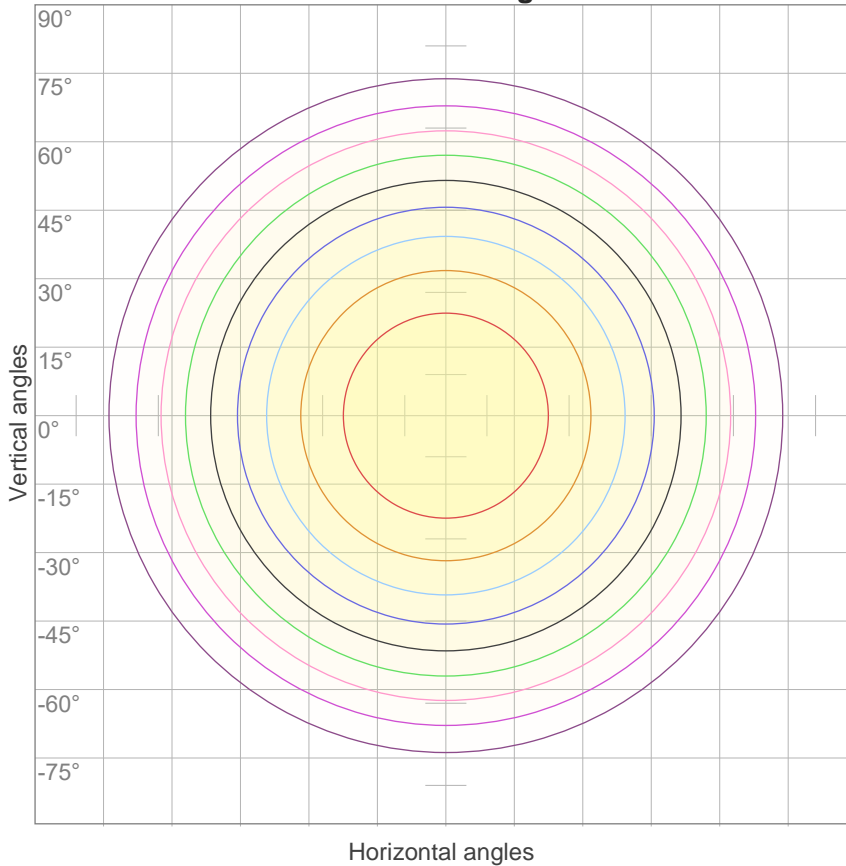
0°	5°	10°	15°	20°	25°	30°	35°	40°	45°	50°	55°	60°	65°	70°	75°	80°	85°	90°	95°
1396	1392	1374	1345	1305	1254	1193	1122	1041	951	852	747	636	520	403	288	180	86	24	5
100%	100%	98%	96%	94%	90%	85%	80%	75%	68%	61%	54%	46%	37%	29%	21%	13%	6%	2%	0%

Intensities in 270° c-plane

0°	5°	10°	15°	20°	25°	30°	35°	40°	45°	50°	55°	60°	65°	70°	75°	80°	85°	90°	95°
1396	1392	1374	1345	1305	1254	1193	1122	1041	951	852	747	636	520	403	288	180	86	24	5
100%	100%	98%	96%	94%	90%	85%	80%	75%	68%	61%	54%	46%	37%	29%	21%	13%	6%	2%	0%

Beam angle 50%	Field angle 10%	Cutoff angle 2,5%	Intensity ratio in 120° cone	Intensity ratio in 90° cone
114,5°	164°	176,6°	77,0%	52,1%

iso-candela diagram



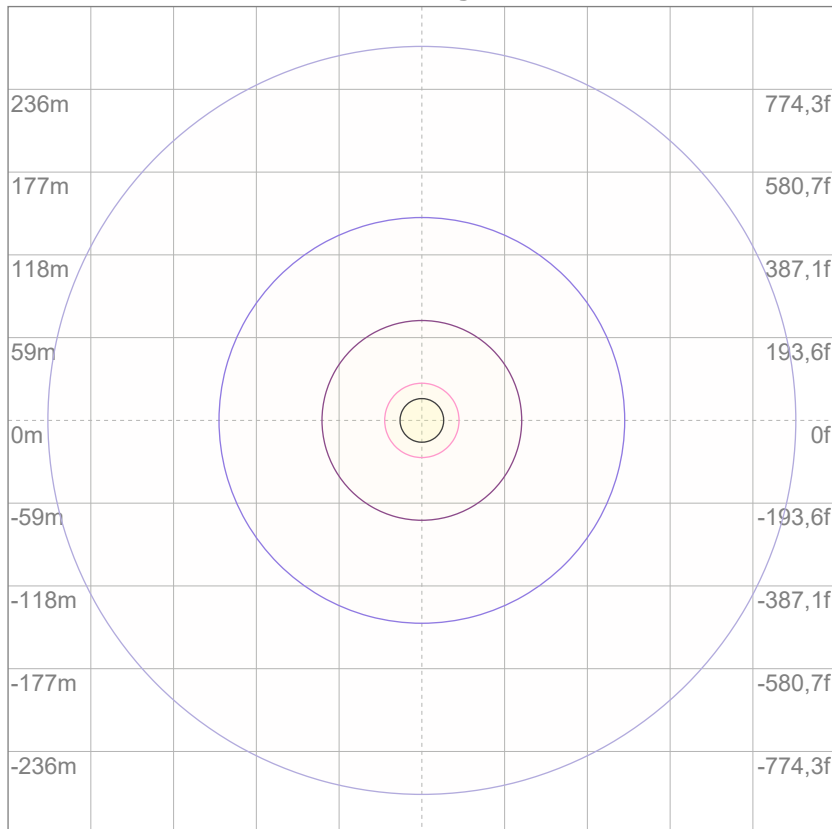
10%	140 cd
20%	279 cd
30%	419 cd
40%	558 cd
50%	698 cd
60%	837 cd
70%	977 cd
80%	1117 cd
90%	1256 cd

Conditions:

Number of c-planes: 12

Candela at center: 1396 cd

iso-lux diagram



3%	0,419 lx
5%	0,698 lx
10%	1,40 lx
30%	4,19 lx
50%	6,98 lx

Conditions:

Number of c-planes: 12

Lux at center: 14,0 lx

Lux distribution on a surface when lamp is mounted at 10 meters from the surface.

Mounting height: 10 meters (33 feet)

Glare evaluation according to UGR

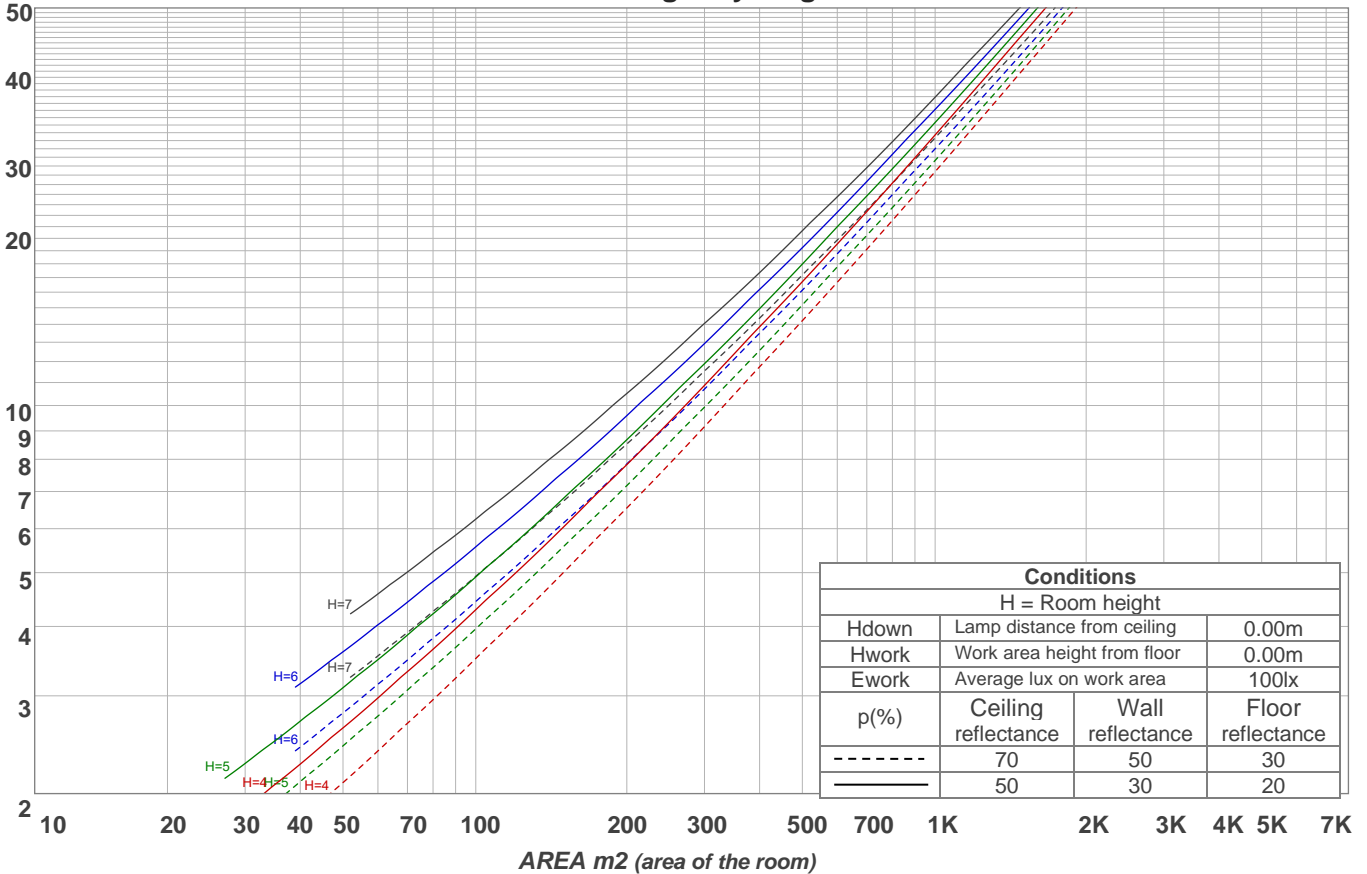
p Ceiling		70	70	50	50	30	70	70	50	50	30
p Walls		50	30	50	30	30	50	30	50	30	30
p Floor		20	20	20	20	20	20	20	20	20	20
Room size X Y		Viewing direction at right angles to lamp axis					Viewing direction parallel to lamp axis				
2H	2H	17,6	18,9	17,9	19,2	19,4	17,6	18,8	17,8	19,1	19,4
	3H	19,2	20,4	19,6	20,7	21,0	19,0	20,3	19,4	20,6	20,8
	4H	19,8	21,0	20,2	21,3	21,6	19,7	20,9	20,1	21,2	21,4
	6H	20,4	21,5	20,7	21,8	22,2	20,2	21,3	20,5	21,6	21,9
	8H	20,6	21,6	20,9	21,9	22,4	20,3	21,4	20,7	21,7	22,1
	12H	20,7	21,7	21,1	22,0	22,5	20,4	21,4	20,8	21,8	22,2
4H	2H	18,2	19,5	18,7	19,7	20,0	18,2	19,4	18,6	19,7	20,0
	3H	20,1	21,1	20,5	21,4	21,9	20,0	21,0	20,3	21,3	21,8
	4H	20,8	21,7	21,2	22,1	22,7	20,6	21,6	21,1	22,0	22,6
	6H	21,4	22,3	21,9	22,7	23,0	21,2	22,1	21,7	22,5	22,9
	8H	21,6	22,4	22,1	22,8	23,2	21,4	22,2	21,9	22,6	23,0
	12H	21,8	22,5	22,3	22,9	23,4	21,6	22,2	22,1	22,7	23,2
8H	4H	21,1	21,9	21,6	22,3	22,7	20,9	21,7	21,5	22,1	22,5
	6H	21,8	22,5	22,4	22,9	23,5	21,7	22,3	22,2	22,8	23,3
	8H	22,2	22,7	22,7	23,3	23,9	22,0	22,5	22,5	23,1	23,7
	12H	22,4	22,9	23,0	23,4	24,0	22,2	22,7	22,8	23,2	23,8
12H	4H	21,1	21,7	21,6	22,2	22,7	21,0	21,6	21,5	22,1	22,6
	6H	21,9	22,5	22,5	23,0	23,7	21,8	22,3	22,3	22,8	23,5
	8H	22,3	22,7	22,9	23,3	23,9	22,1	22,6	22,7	23,1	23,7
Variation of the observer position for the luminaire distance S											
S = 1.0H		0,1 / -0,1					0,1 / -0,1				
S = 1.5H		0,1 / -0,2					0,1 / -0,2				
S = 2.0H		0,4 / -0,4					0,4 / -0,5				
CIE 117-1995. Corrected glare indices referring to 4150 lm total luminous flux											

Coefficients of Utilization

Ceiling reflectance	80				70				50			30			10			0			
Wall reflectance	70	50	30	10	70	50	30	10	50	30	10	50	30	10	50	30	10	0			
Floor reflectance	20	20	20	20	20	20	20	20	20	20	20	20	20	20	20	20	20	20	20	20	0
RCR	(RCR: Room Cavity Ratio)																				
	Room Values are expressed as percentage of Lumens delivered to the task surface																				
0	119	119	119	119	116	116	116	116	111	111	111	106	106	106	101	101	101	99			
1	108	103	99	95	105	101	97	93	96	93	90	92	90	87	89	86	84	82			
2	98	90	83	77	95	88	81	76	84	79	74	81	76	72	77	74	70	68			
3	89	79	70	64	87	77	69	63	74	67	62	71	65	61	68	63	59	57			
4	82	70	61	54	79	68	60	53	65	58	52	63	57	52	61	55	51	49			
5	75	62	53	46	73	61	52	46	59	51	45	56	50	45	55	49	44	42			
6	69	56	47	40	67	55	46	40	53	45	40	51	44	39	49	43	39	37			
7	64	51	42	35	62	50	41	35	48	40	35	46	40	35	45	39	34	32			
8	60	46	37	32	58	45	37	31	44	36	31	43	36	31	41	35	31	29			
9	56	42	34	28	54	42	34	28	40	33	28	39	33	28	38	32	28	26			
10	52	39	31	26	51	38	31	26	37	30	25	36	30	25	35	29	25	23			

LAMPS (number of lamps)

Luminaire budgetary diagram



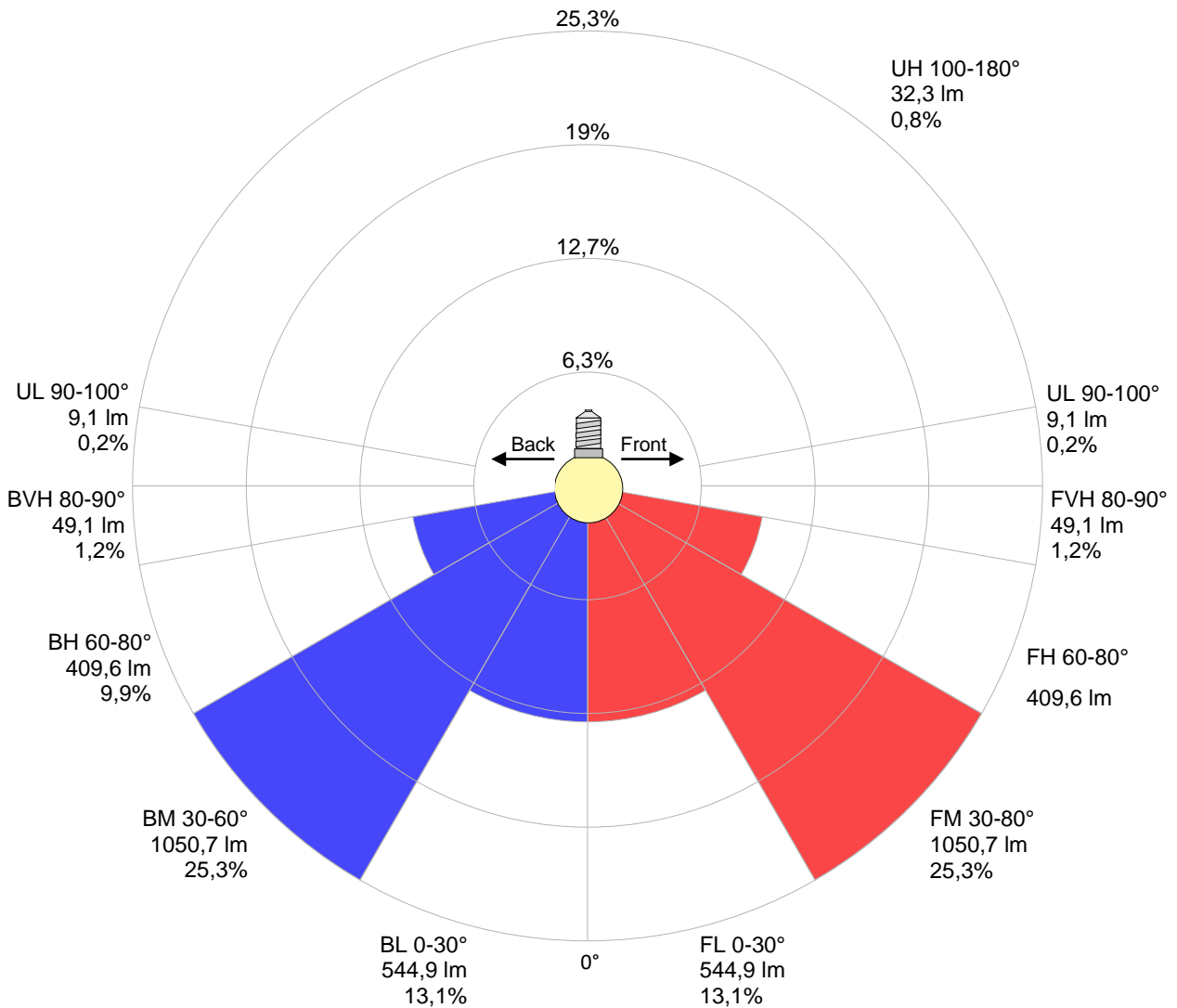
Zonal Lumen Summary

0°-10°	10°-20°	20°-30°	30°-40°	40°-50°	50°-60°	60°-70°	70°-80°	80°-90°
{LUM0-10}	380 lm	578 lm	702 lm	733 lm	668 lm	515 lm	305 lm	96,3 lm
90°-100°	100°-110°	110°-120°	120°-130°	130°-140°	140°-150°	150°-160°	160°-170°	170°-180°
8,40 lm	5,35 lm	5,41 lm	5,53 lm	5,14 lm	4,53 lm	3,44 lm	2,15 lm	0,750 lm

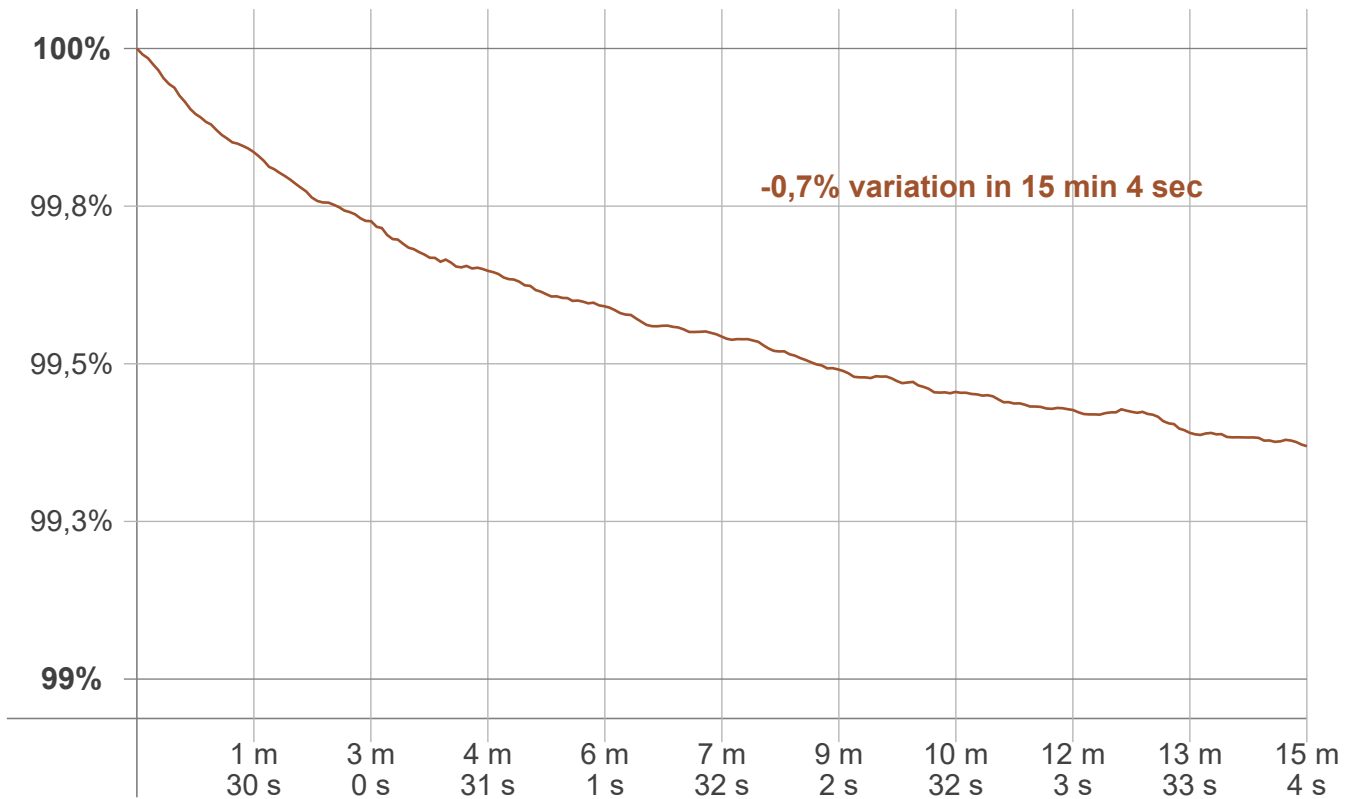
LCS table

BUG rating:	B2 U2 G1	
Forward light	Lumens	Lumens %
Low(0-30):	544,9	13,1%
Medium(30-60):	1050,7	25,3%
High(60-80):	409,6	9,9%
Very high(80-90):	49,1	1,2%
Back light		
Low(0-30):	544,9	13,1%
Medium(30-60):	1050,7	25,3%
High(60-80):	409,6	9,9%
Very high(80-90):	49,1	1,2%
Uplight		
Low(90-100):	9,1	0,2%
High(100-180):	32,3	0,8%

LCS graph



Warmup curve



Warmup result

Warmup time:	Lamp stabilized in 15 min 4 sec
Warmup variation	-0,7%

Warmup conditions

Stable period:	15 min
Stable change max:	2,0%
Minimum time:	15 min

Color temperature change

CCT start	CCT change	CCT end
3988 K	+12 K	4000 K

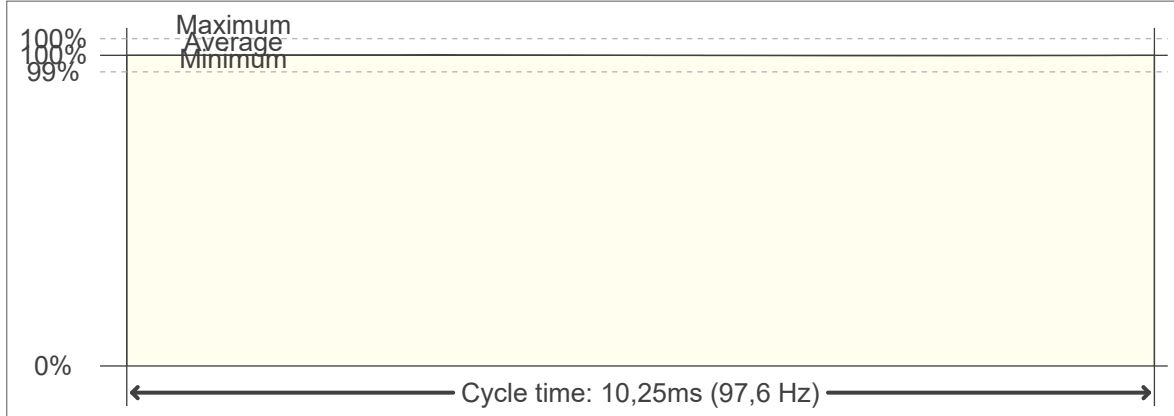
Output change

Output start	Output change	Output end
4177 lm	-27 lm	4150 lm

Flicker curve (complete sampled flicker signal)



Flicker frame (frame of one flicker period)



Flicker FFT (frequency scope of flicker curve)



Flicker results:

Flicker frequency:		97,56 Hz	
Flicker index:	0	JA8/10 40Hz	0,02 %
Flicker percentage:	0,22 %	JA8/10 90Hz	0,03 %
SVM: (Visual flicker)	0,01	JA8/10 200Hz	0,18 %
PstLM	0,01	JA8/10 400Hz	0,18 %
Mp	0,01	JA8/10 1000Hz	0,2 %

Flicker conditions:

Sample rate:	20000 samples/second
--------------	----------------------